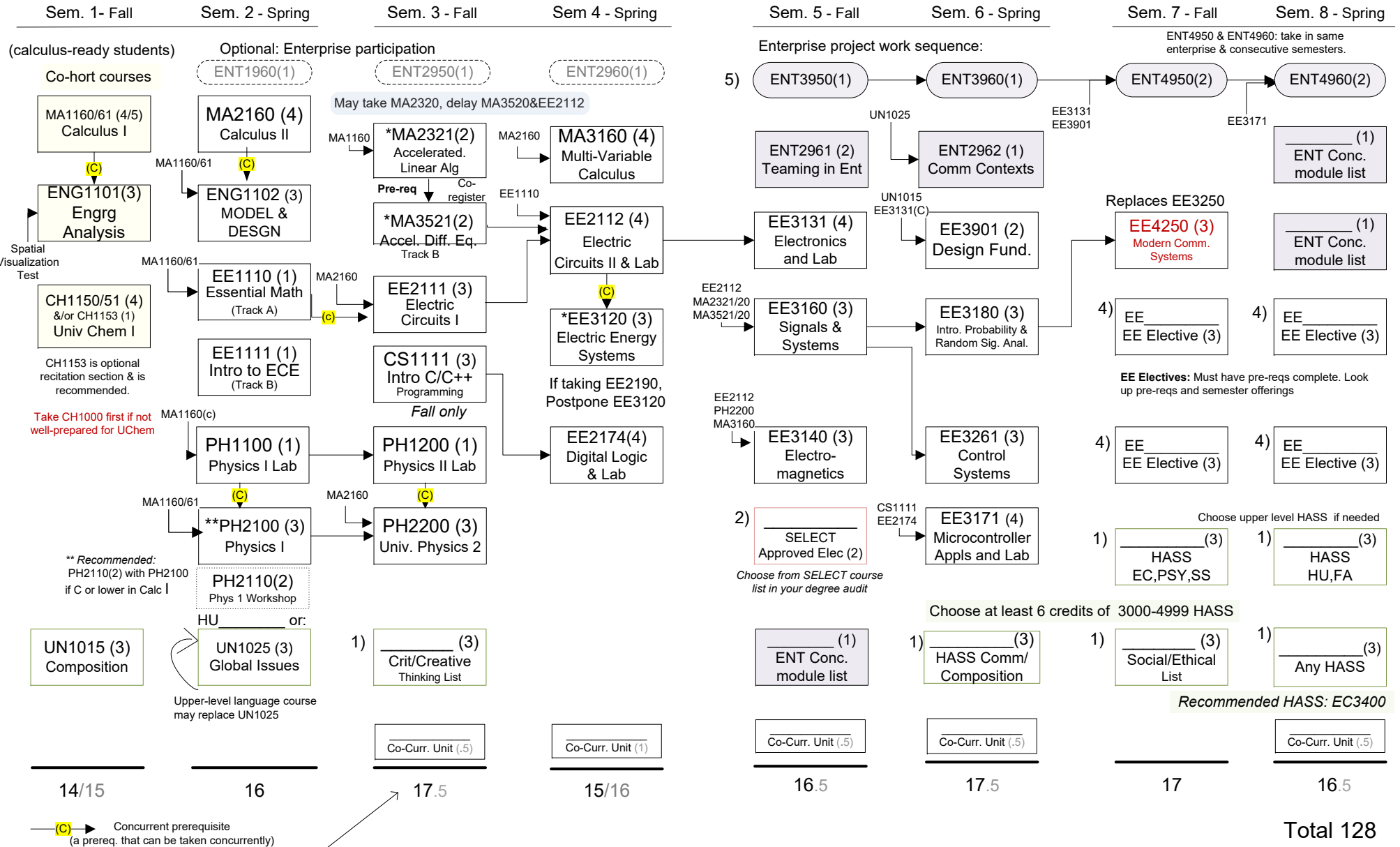


BS EE Engineering Enterprise Concentration

2018-2019

catalog term 201808

SAMPLE PLAN
Calculus-ready students



(C) → Concurrent prerequisite (a prereq. that can be taken concurrently)

* Schedule a minimum of 14 credits if taking accelerated Linear Alg/Diff Eq
 ** beginning academic year 2019-20, a grade of C or higher in Calc 1 is required for PH2100 or if CD or D in Calc I, PH2110 is required with PH2100.

1) 2) 3) 5) See reverse side for planning and General Education details.

Undergraduate advisor:
 EERC 131. Call 487-2550 to schedule appt. eceadvise@mtu.edu

Attend Career Fairs early on:
 Semester 5 or 6 is good to co-op.
 220 Admin Building

Study Abroad office:
 200 Admin Building

List of approved ENT concentration modules:
 ENT3954, ENT3956, ENT3961, ENT3963,
 ENT3966, ENT3967, ENT3959, ENT3971,
 ENT3982, ENT3983, ENT4951, ENT4954

Total 128
 plus 3 units
 co-curricular
 activities