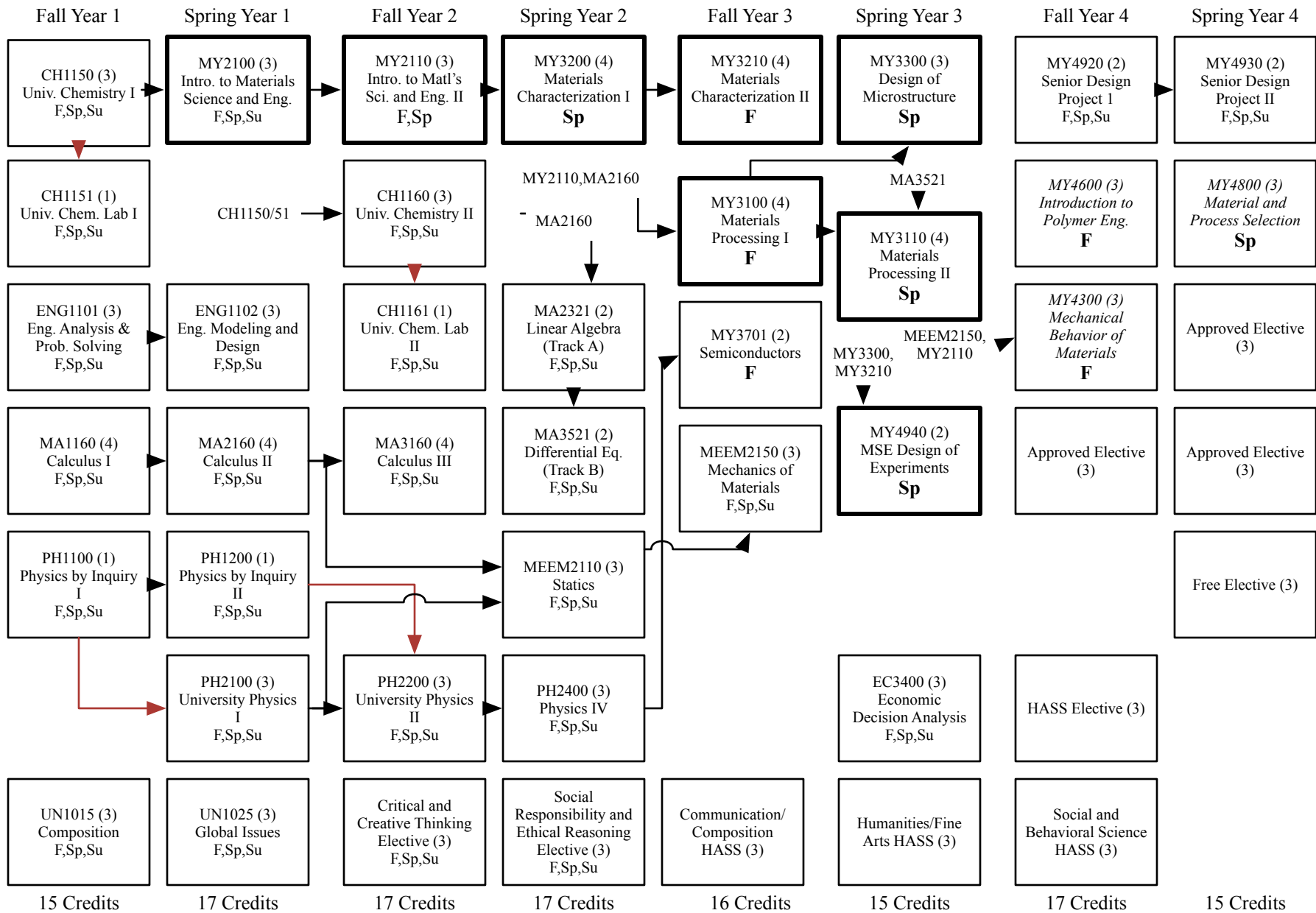


# 2015-2016 B.S. in Materials Science and Engineering Flow Chart



131 credits required (128 shown). Students must complete 3 credits of Co-Curricular activities  
 Black arrows represent prerequisites, red arrows represent concurrent prerequisites  
 Approved Electives are courses in Science Engineering or Mathematics at 3xxx level or higher  
 Courses with dark outline (e.g. MY3210) are required to be "Senior Design Ready" (All are prerequisites for MY4920)  
*Italicized* courses have MY2100 as a prerequisite  
 Students must take at least 6 credits of HASS at 3xxx+ level in addition to EC3400

