

Bachelor of Science in Chemical Engineering 2015-2016 Catalog Year

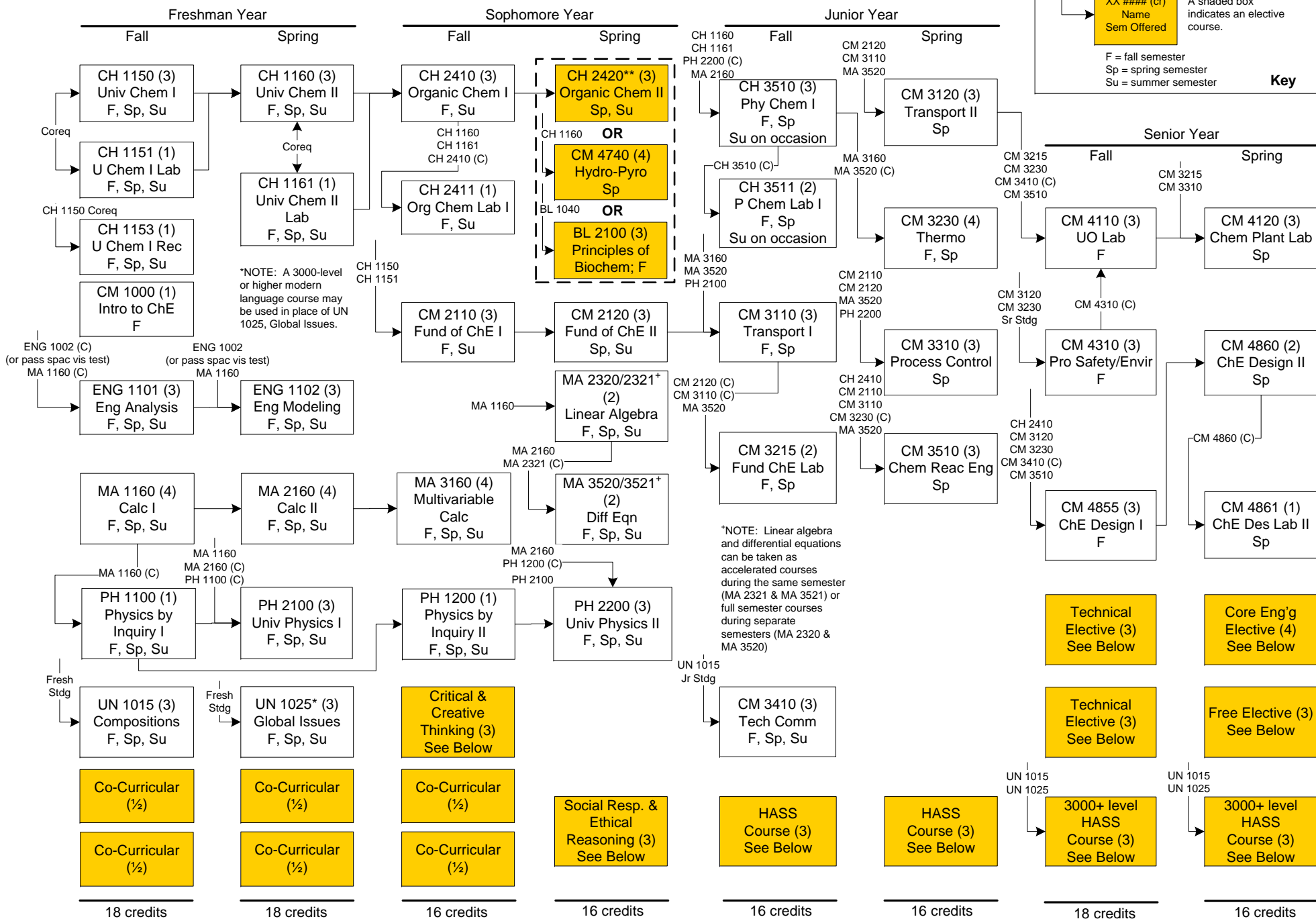
XX #### = prereq
XX #### (C) = prereq that can be taken concurrently

XX #### (cr)
Name
Sem Offered

A shaded box indicates an elective course.

F = fall semester
Sp = spring semester
Su = summer semester

Key



See back of academic plan for more information on requirements for elective courses.

This is not an official list of degree requirements. Adjustments may be required due to curriculum changes.