

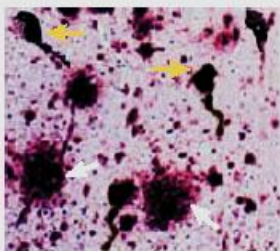


Ashutosh Tiwari

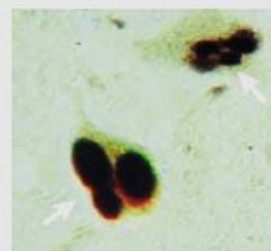


Areas of research/expertise

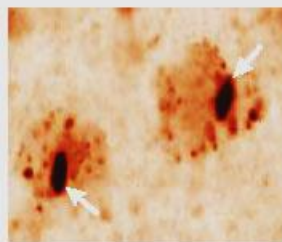
I am a protein chemist by training and study protein misfolding and aggregation to understand its role in Neurodegenerative Diseases.



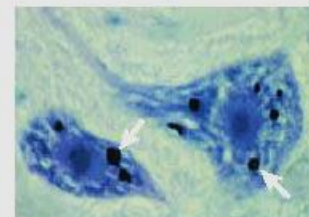
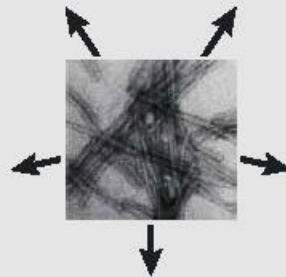
Alzheimer's plaques and tangles



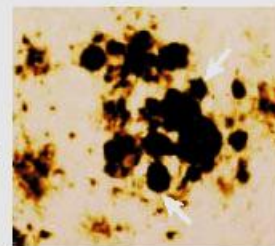
Parkinson's Lewy bodies



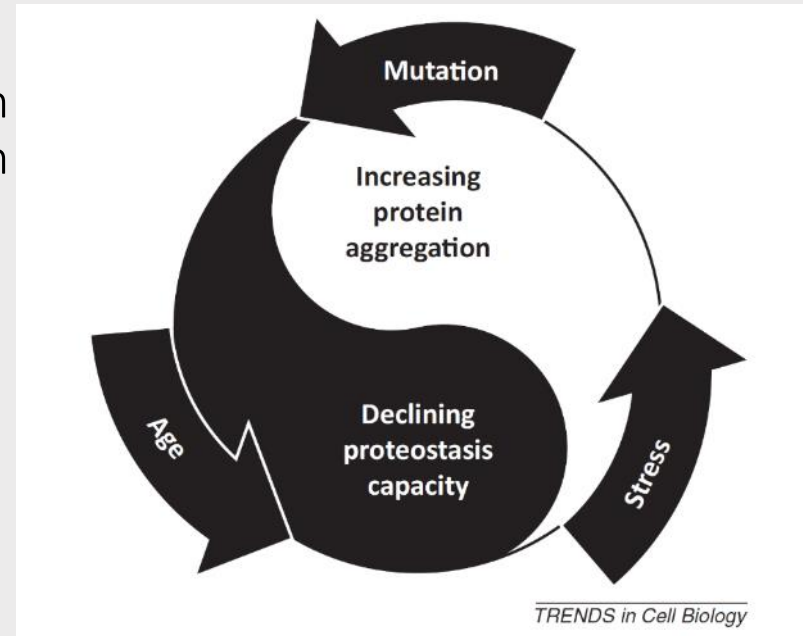
Huntington's intranuclear inclusions



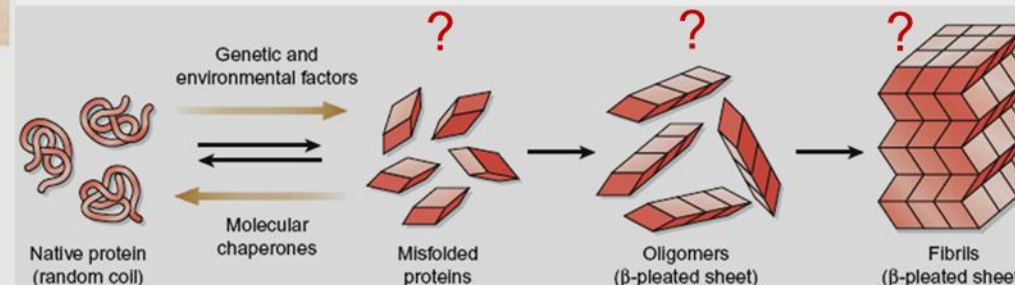
Amyotrophic lateral sclerosis aggregates



Prion amyloid plaques



Which is the toxic Protein Species?



Research in Tiwari lab:

- 1) Identify experimental conditions that can generate diverse aggregated protein structures.
- 2) Develop novel tools and techniques to differentiate amongst the varied aggregated species of proteins.
- 3) Understand the relationship between aggregated protein species and its associated cellular toxicity.

