



Paul van Susante



Space Mining is Almost Here!

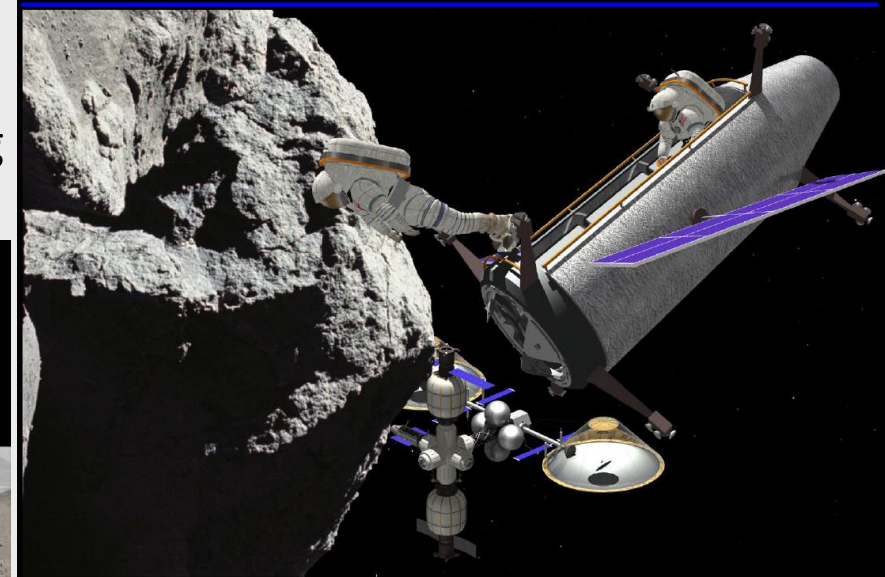
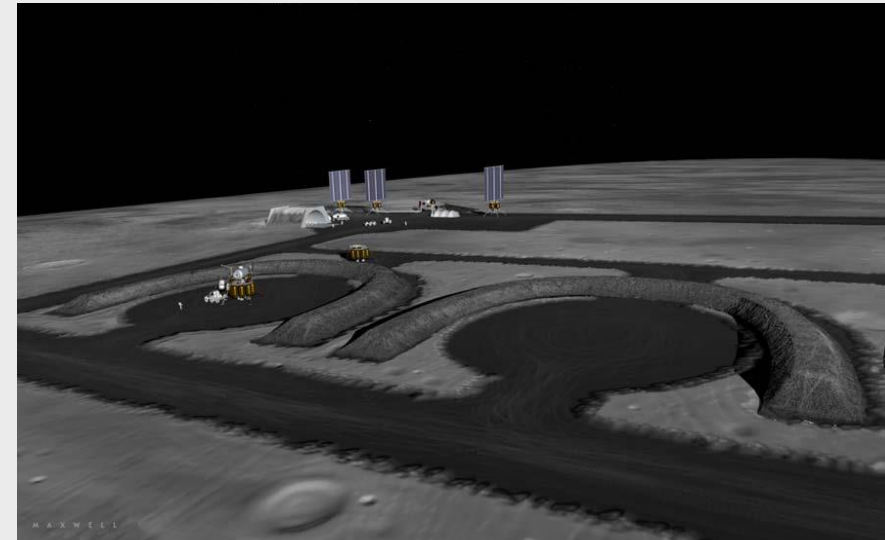
In-Situ Resource Utilization (ISRU)

Space Mining (Moon, Mars, Asteroids)

- Water for rocket fuel/oxidizer
- Leverage (only send added value from Earth)
- Information, energy, local use, export

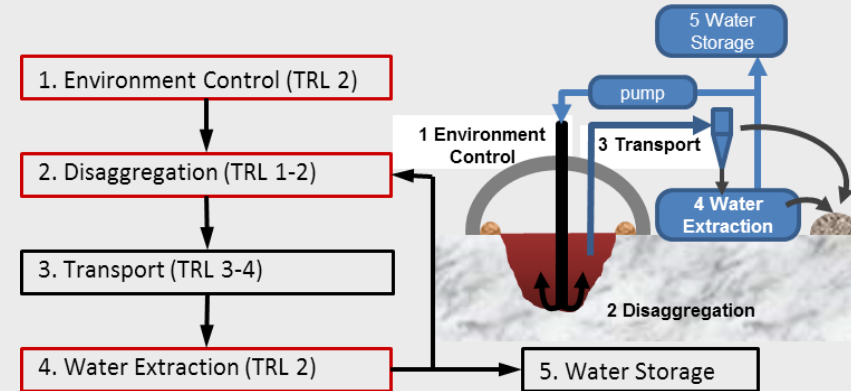
Space Construction

- Use local rocks, regolith
- Simple structures, e.g. 3D printing

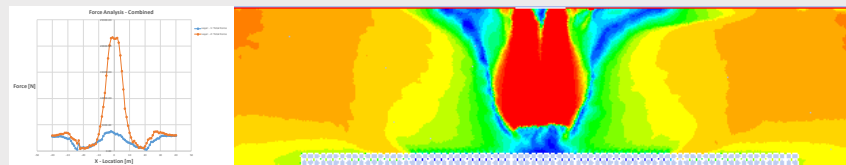


Scholarly Contributions

- Chair of ASCE Aerospace Division
- Secretary of AIAA Space Resource TC
- NASA SBIR/STTR grant 2016-2017
- NASA JPL summer ISRU research 2017
- NASA Early Stage Innovation proposal
- Invited talks at UCF CLASS, CSM



Picture Credit: MTU/Honeybee Robotics/Jetportal SFC



Experiments, field testing and CFD analysis are needed to confirm this

Rocks outside of center zone could be blown away but will blow away from vehicle and a shallow angles

Center zone not expected to move if no gaps in the dust

