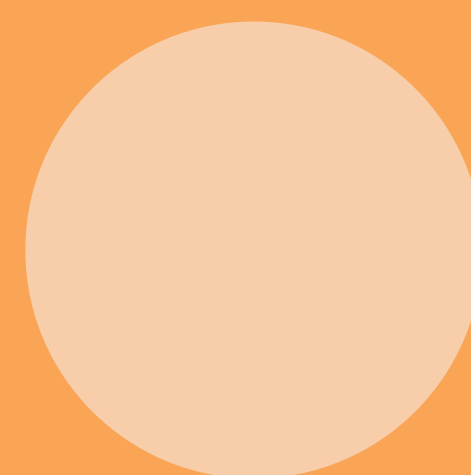


Let's Explore
GREEK LIFE



*Life is not about
the destination,
but the journey.*

Michigan Tech Panhellenic Sorority Recruitment 2023

 **Greek Life at a Glance.....1**

 **The Panhellenic Creed...2**

 **Meet the Eboard.....3**


 **Terminology.....6**

 **Greek Alphabet.....8**

 **Recruitment Schedule...9**

 **Questions to Ask.....11**

 **Making your Decision...14**

 **FAQs.....15**

 **What to Wear.....16**



Greek Life at a Glance

Our Mission

"Seek to redefine the Greek experience by advancing fraternal ideals through a commitment to our rituals."

As of 2022:

5164.64 hours of community service

\$30,568.70 raised for local philanthropies

9% of MTU students are apart of Greek life



@michigantechgreeks
@mtu_panhellenic



Fraternity and Sorority Life at
Michigan Tech

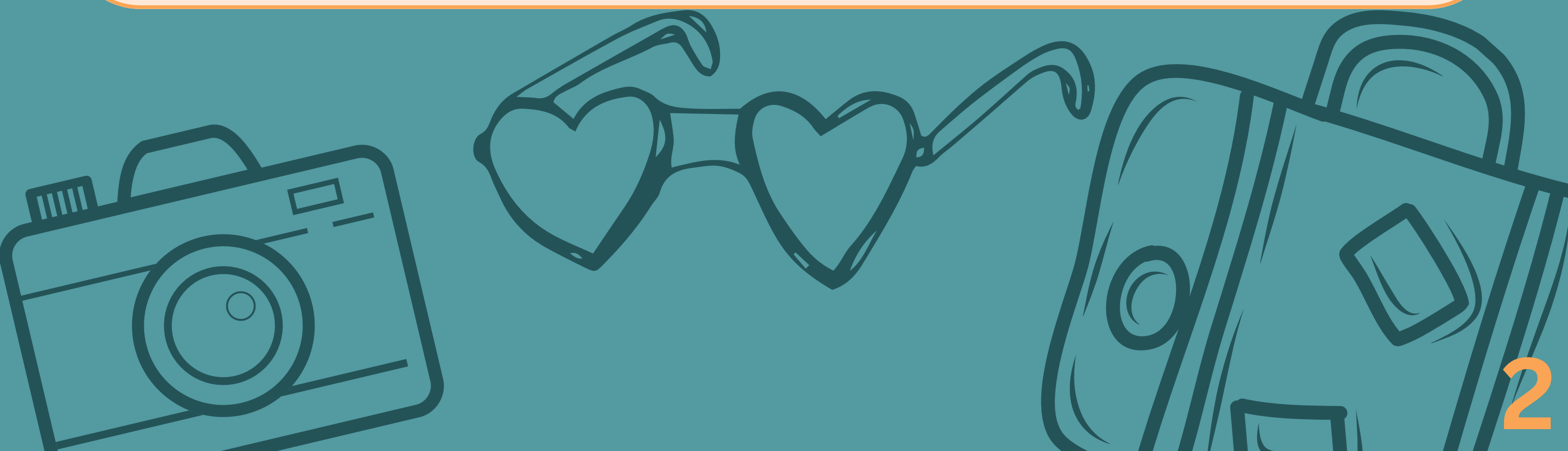


Mtu.edu/student-
leadership/Greek-life

The Panhellenic Creed

We, as Undergraduate Members of women's fraternities, stand for good scholarship, for guarding of good health, for maintenance of fine standards, and for serving, to the best of our ability, our college community. Cooperation for furthering fraternity life, in harmony with its best possibilities, is ideal that shall guide our fraternity activities.

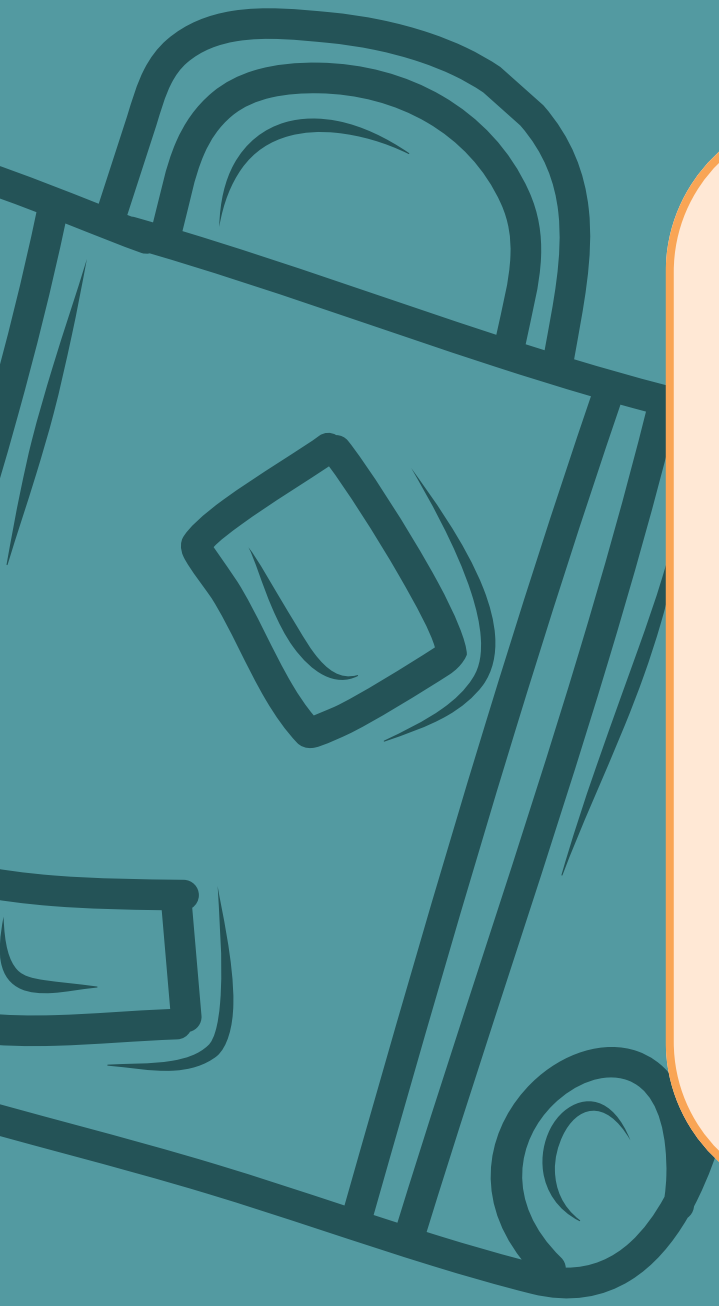
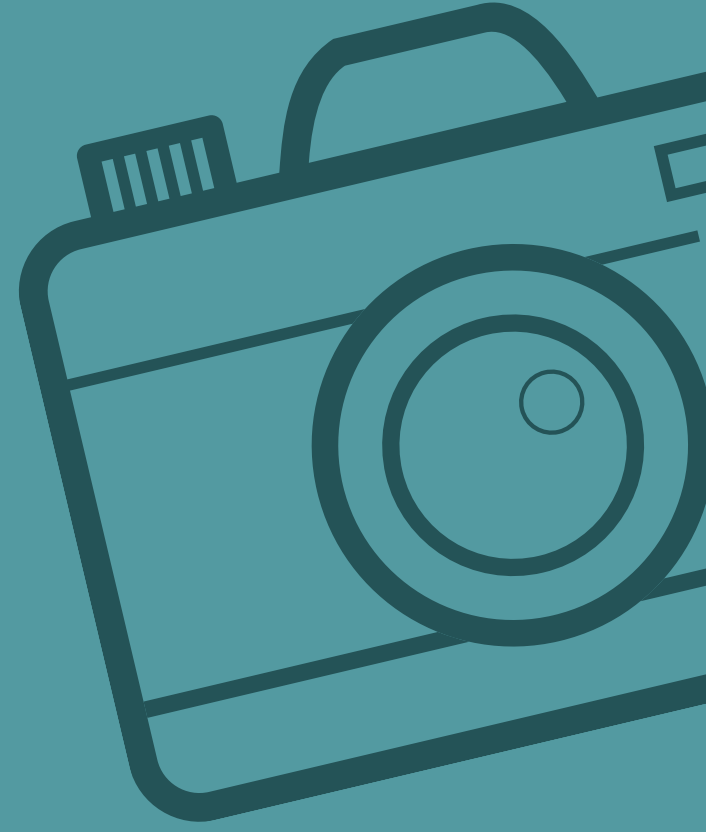
We, as Fraternity Women, stand for service through the development of character, inspired by the close contact and deep friendship of the individual fraternity and Panhellenic life. The opportunity for wide and wise human service, through mutual respect and helpfulness, is the tenet by which we strive to live.



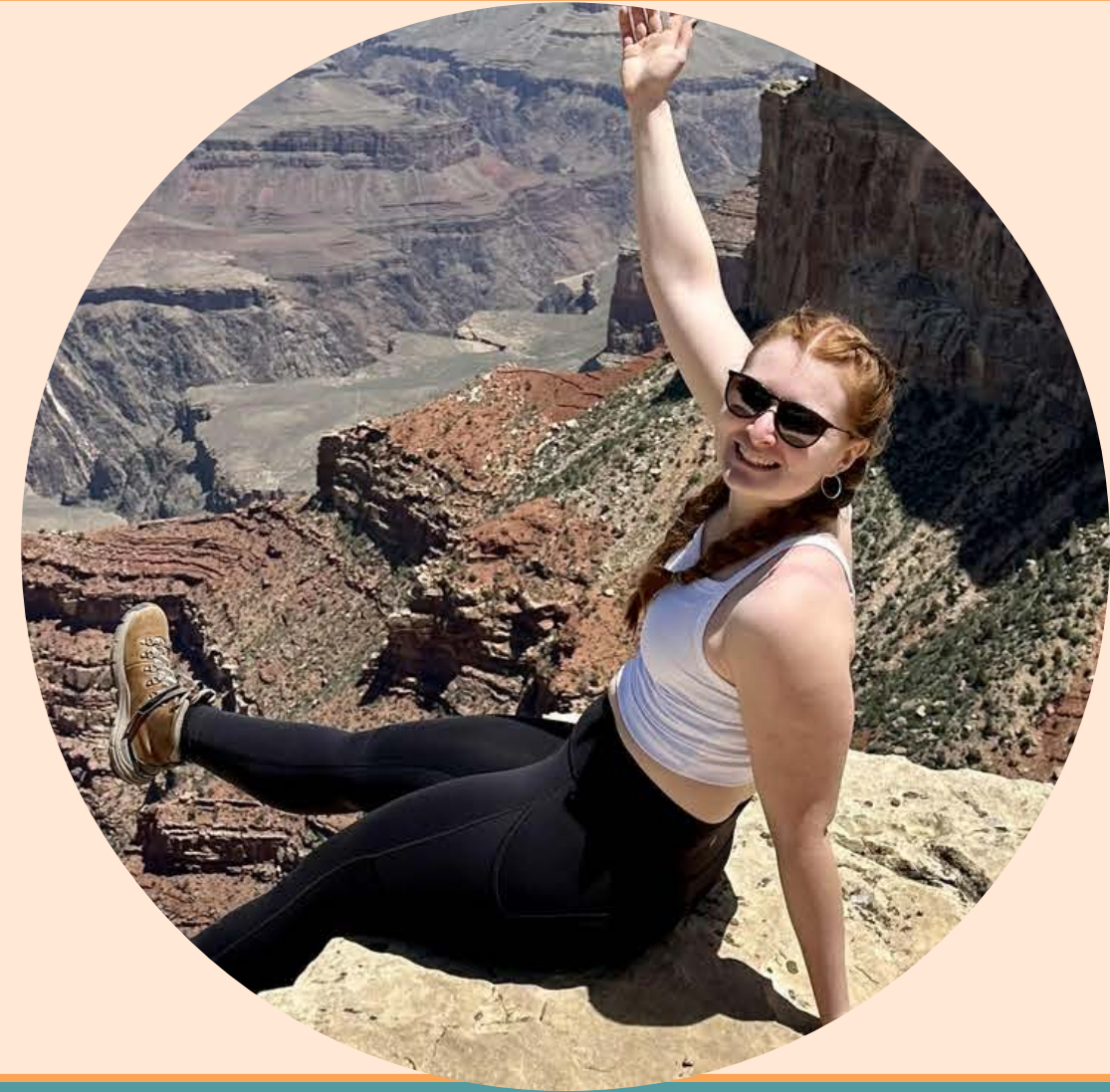
Meet the Eboard!



Arianna Milnar
President



Jacqui Foreman
VP Judicial



Kristen Kautz
VP Recruitment
Operations



Meet the Eboard!

Kaydence Drys
VP
Administration



Mack Miller
VP Scholarship



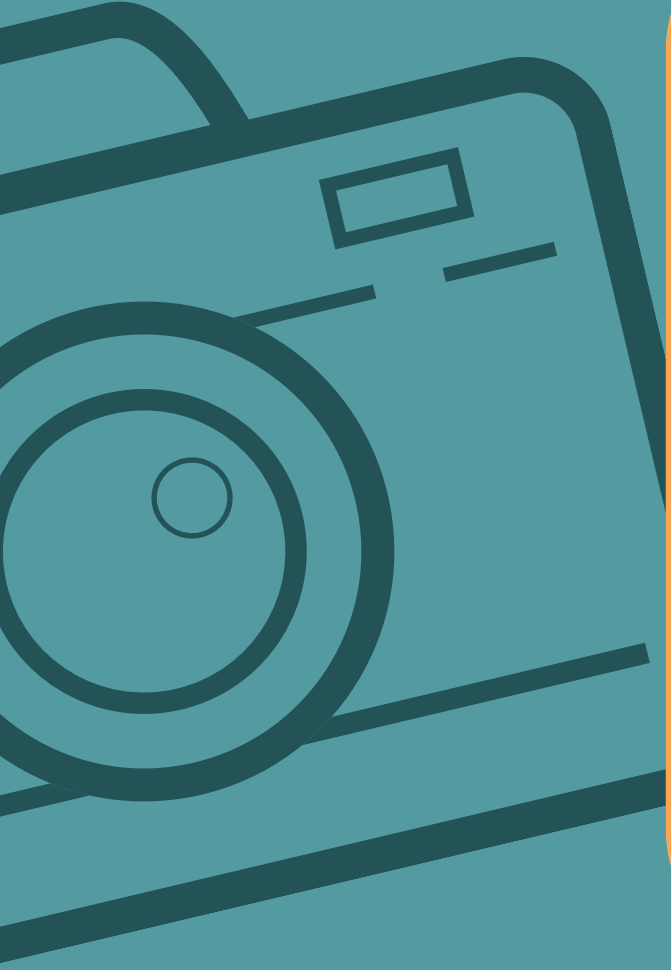
Logan Peters
VP Public
Relations



Meet the Eboard!



Anna Slater
VP Recruitment
Programming



Lena Lukowski
VP Programming



Amy Hjerstedt
Advisor



Terminology to Know

Active: a member of an organization that is initiated and enrolled in school.

Bid: An invitation for a potential new member to join a particular organization.

Chapter: An individual Greek organization established at a university.

Dues: The amount of money paid to a chapter by an active each semester.

Formal Recruitment: The process of fall recruitment followed by NPC sororities.

Hazing: A banned process at Michigan Tech for any and all student organizations and sports teams.

Interfraternity Council (IFC): The governing body of the men's fraternities. **Initiation:** A ceremony in which a student becomes a full member of an organization.

Local: An organization whose chapter is only established at one university.

National: An organization which has chapters across the nation and has a (inter)national headquarters.

National Panhellenic Council (NPC, Panhel): The governing body of the national and local sororities.

Terminology to Know

New Member: A student who has already received a bid and is going through the new member process, but has not yet been initiated into the organization in order to become an active.

New Member Process: The process that a new member must complete to become an active or full member of a Greek organization. Time length varies by organization but generally lasts five to eight weeks usually concluding with a week of close chapter events. Previously known as pledging.

Philanthropy: The process of raising money for a specific organization or cause.

Potential New Member: A student attending recruitment events; previously known as a rushee.

Preference: An invitation only recruitment event. A chance for a student to express an interest in receiving a bid by that organization.

Rush/Recruitment Event: An event which an organization sponsors to meet students.

Silent Period: The period of time between a NPC organization handing out a bid and a student's official answer; no NPC organization may be in contact with a potential new member at this time.

The Greek Alphabet

Αα Ββ Γγ Δδ

Alpha

Beta

Gamma

Delta

Εε Ζζ Ηη Θθ

Epsilon

Zeta

Eta

Theta

Ιι Κκ Λλ Μμ

Iota

Kappa

Lambda

Mu

Νν Ξξ Οο Ππ

Nu

Xi

Omicron

Pi

Ρρ Σσ Ττ Υυ

Rho

Sigma

Tau

Upsilon

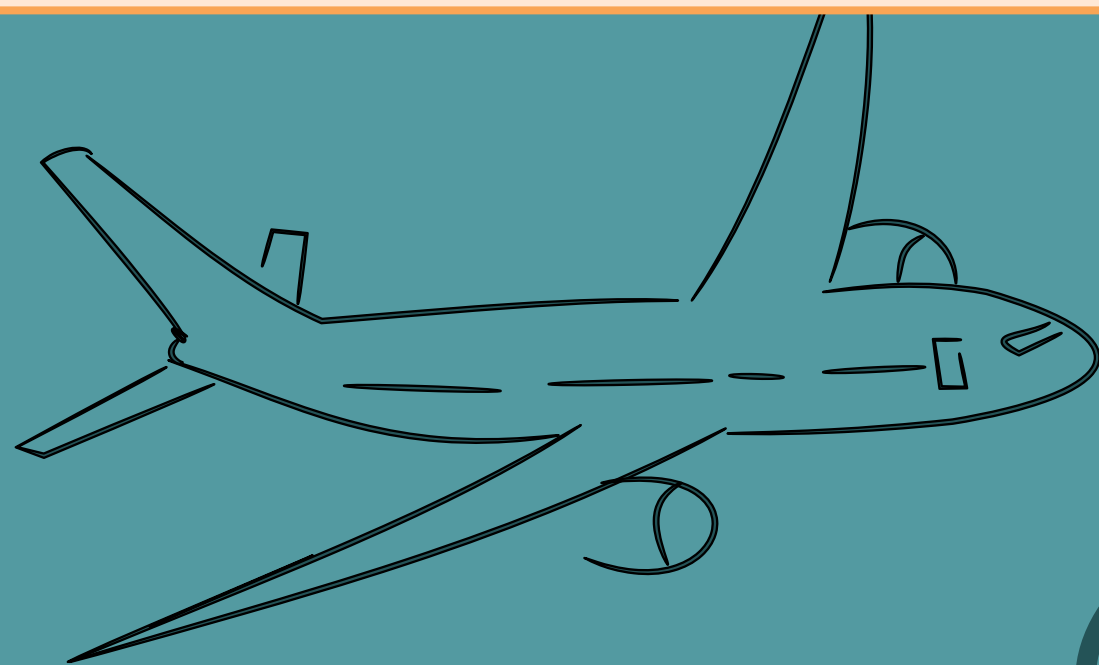
Φφ Χχ Ψψ Ωω

Phi

Chi

Psi

Omega



Recruitment Schedule

Friendship Bracelet Making with Panhellenic

August 24th, Walker Lawn, 5:00 - 7:00 PM

*Optional

Info Session and Crafts

September 1st, MUB Alumni Lounge, 7:00 - 9:00 PM

*Optional

Rock Painting with Panhellenic

September 7th, MUB Alumni Lounge, 5:00 - 7:00 PM

*Optional

K-Day

Septemeber 8th, Chassell Centennial Park , 12:00 - 4:00 PM

*Optional

Sorority Recruitment Kickoff

Septemeber 8th, MUB Alumni Lounge, 7:00 - 8:00 PM

Recruitment Schedule

Open Houses

September 9th - 10th, Fisher Hall 139, 9:45 AM - 2:00 PM

House Hangout 1

September 11th - 16th, details provided by each chapter

House Hangout 2

September 23rd - 25th, details provided by each chapter

Preference

September 23rd - 25th, details provided by each chapter

Bid Day

September 30th, MUB Ballroom, 5:00 PM

Questions to Ask

Sisterhood

- What sisterhood activities does the chapter plan?
- What do the members do for fun outside of mandatory events?
- What makes your chapter's sisterhood strong?
- How well do you get to know everyone in the chapter?
- What are your chapter's values?

Scholarship

- Is there a grade requirement I must meet?
- What kind of scholarships does your sorority offer
What kind of support does the chapter provide academically?
- Are there members in the chapter with my major?

Member Education

- What does the new member process look like?
- How long is the new member process?
- What is the time commitment for new members?

Questions to Ask

Costs and Time

- What is the time commitment as a member?
- What are the financial commitments as a member?
- Are there any costs on top of dues?
- Do you have payment plans if needed?

Activities

- Are your members involved in other clubs and activities on campus?
- Do any of your members belong to athletic teams?
- Do you participate in activities with other chapters?
- What philanthropies do you support?

Leadership

- What leadership opportunities are there?
- Are there positions I can hold as a new member?
- What kind of positions are there in your sorority?
- Do you feel being in a sorority has made you into a better leader?

Social

- What are some of your social functions?
- Is it mandatory to attend all social functions?

Questions to Ask

Lifelong Benefits

- What alumnae connections are available?
- Is there a local alumnae organization?
- Are alumnae actively involved with your chapter?

Housing

- What duties are assigned for cleaning and other tasks?
- What areas are visitors allowed (or not allowed) in?
- Am I required to live in the sorority house? If so, for how long?
- How much does living in house cost, does it change my dues?
- How much space is available for each member's belongings?
- Do you live in house? Do you enjoy it?

Personal

- Why did you choose this sorority?
- How were you sure it was the right choice for you?
- How has being in this sorority benefited you?
- What has been your best experience within the greek community?

Making Your Final Decision

ABOUT THE MRABA: At the completion of the primary recruitment period, all people are given the option to sign a membership recruitment acceptance binding agreement (MRABA). In order to accept a bid from a sorority, an MRABA must be signed. By signing this document, you as a potential new member agree that you are willing to accept a bid for membership from the sorority you are receiving a bid from. If you sign the MRABA, you are bound to that group for one calendar year (September 2023 to September 2024). If you signed the MRABA and choose not to accept the bid you are NOT eligible to participate in continuous open bidding (COB) in Fall 2023 or Spring 2024.

WHEN DO I SIGN THE MRABA? After having received up to two bids, you will meet with the Panhellenic Advisor to go over and sign your MRABA. You can discuss your concerns with your Rho Gamma, but they cannot be present for the signing of your MRABA. Signing of the MRABA will lead to the automatic acceptance of your bid.

Frequently Asked Questions

What are the benefits of being in a sorority?

Some of the benefits include: leadership experience, academic support, friendships, mentorships, community service, networking, lifelong memories, life skills development, and potential for scholarships!

Am I guaranteed a bid?

Recruitment is a mutual selection process, so while you are looking for an organization that is best for you, chapters are determining who they think will be best for the organization. So, unfortunately, bids are not guaranteed.

What is the time commitment?

Time commitment to the sorority varies by chapter and is a good question to ask during your rounds! Structured recruitment schedules are available and PNMs should expect to dedicate 15 hours toward the recruitment process.

If I participate in recruitment, am I obligated to join a sorority?

PNMs who participate in recruitment are not obligated to join a sorority. The recruitment process gives you the opportunity to explore Greek life and see if it is the right fit for you!

Do I need to go to all the events listed on my recruitment schedule?

You should! These events ensure that you can learn as much as you can about the chapters on campus. Going to all of the events will help you make a decision regarding membership. If you must miss an event, be sure to communicate with the recruitment directors.

What to Wear

Open House and House Hangouts:

CUTE & CASUAL

You will be sitting in classrooms or at chapter's homes meeting with members of the chapters. Often PNMs wear a nice shirt with shorts, jeans, or a skirt. Sandals or sneakers recommended!

Preference:

SEMI-FORMAL

Preference is typically a nicer dinner and house tour offered by the sororities. It is a common for the dress-code to be semi-formal. Feel free to wear a dress, jumpsuit, blouse and pants or skirt. Whatever you feel the most comfortable in!

Bid Day:

COMFORTABLE & FUN

Bid day is in the MUB Ballroom this year! Wear something that you are comfortable in and get excited to meet your new sisters!