

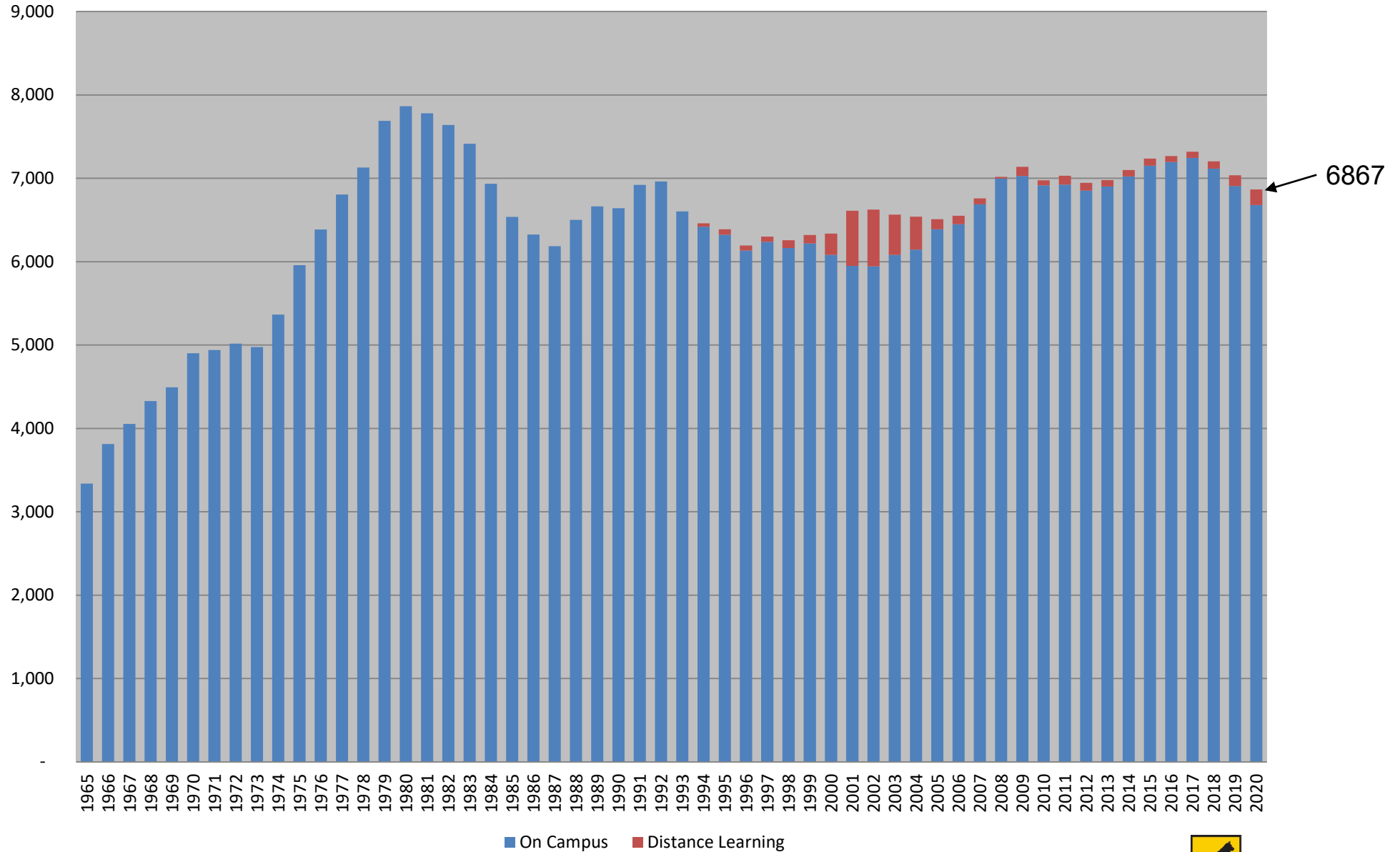
# University Senate

## Undergraduate Recruitment and Enrollment Review

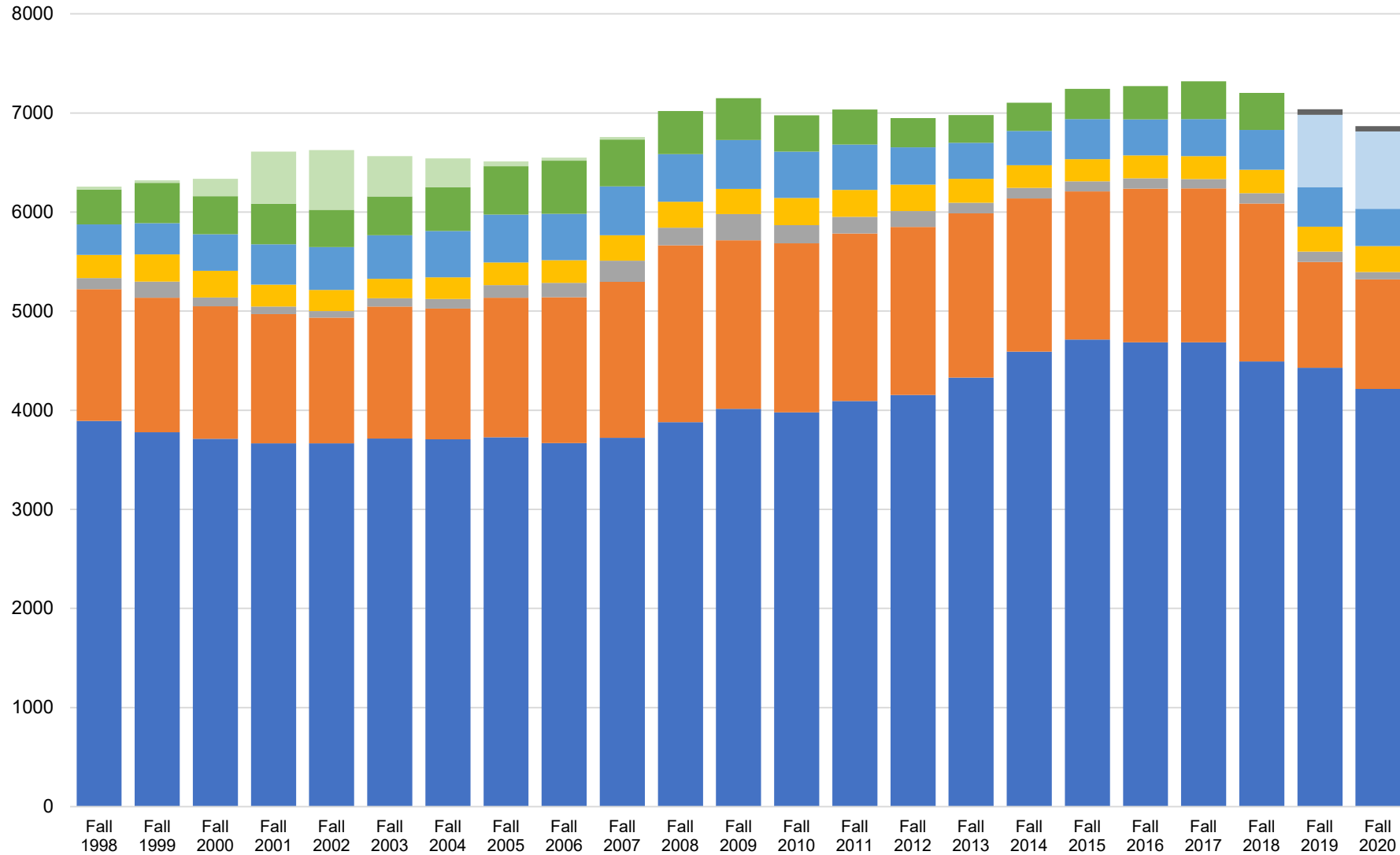
November 11, 2020



# Fall Enrollment 1965-2020



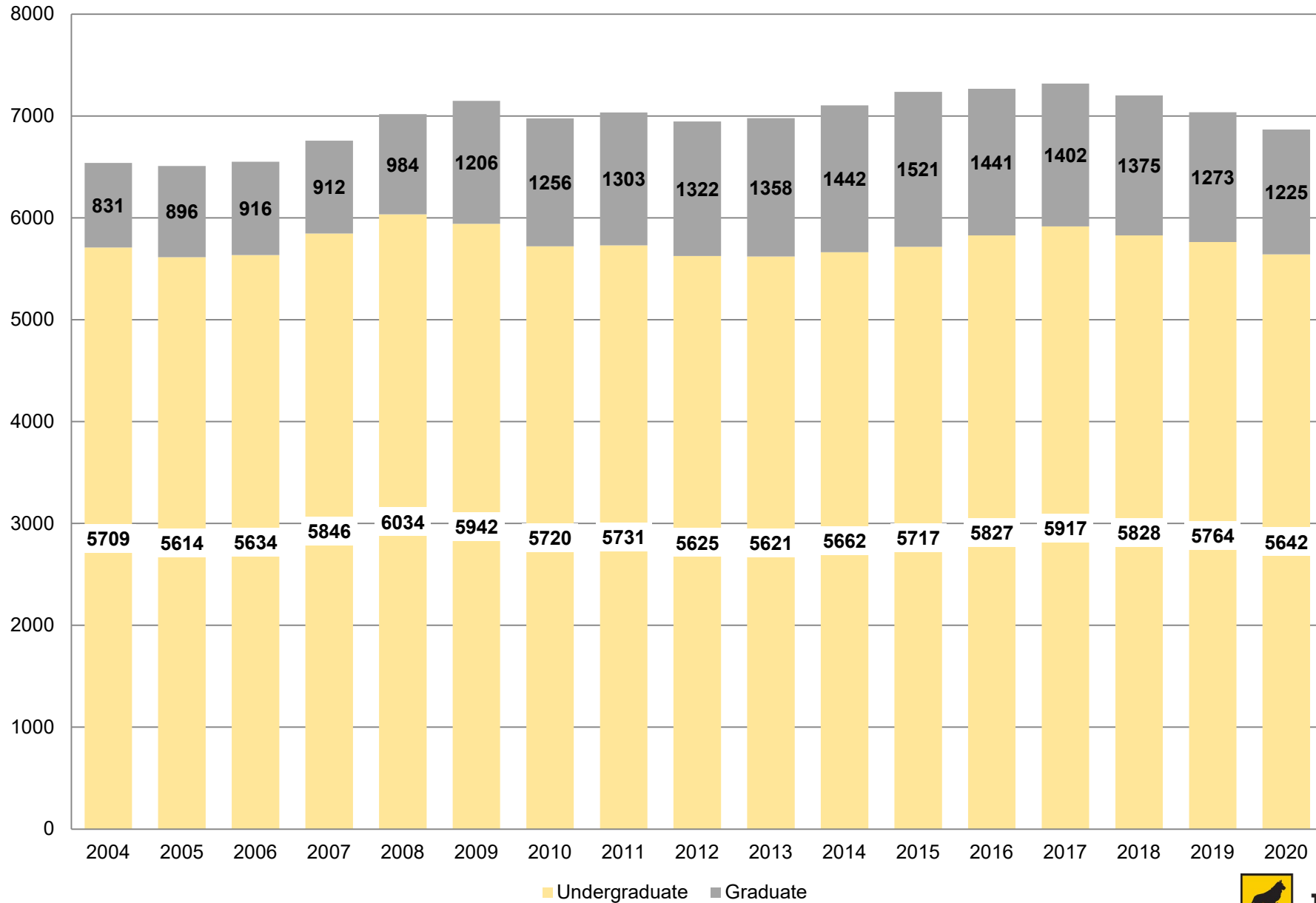
# All Students by College



- College of Engineering
- College of Sciences & Arts
- No College Designated
- Sch of Forest Res & Envir Sci
- School of Business & Economics
- School of Technology
- University Extended Programs
- College of Computing
- Interdisciplinary Programs



# Total Enrollment by UG/G



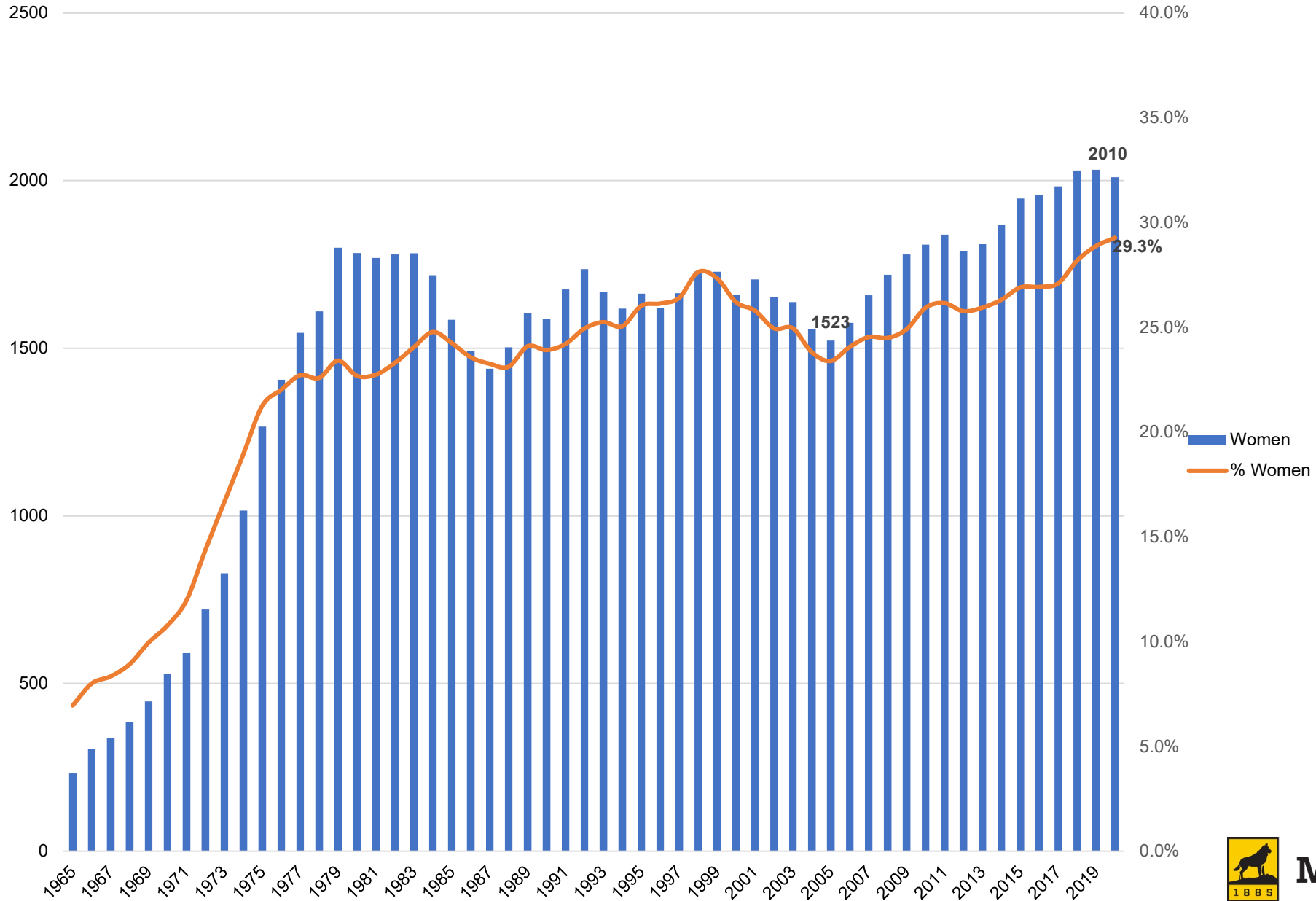
Undergraduate Graduate



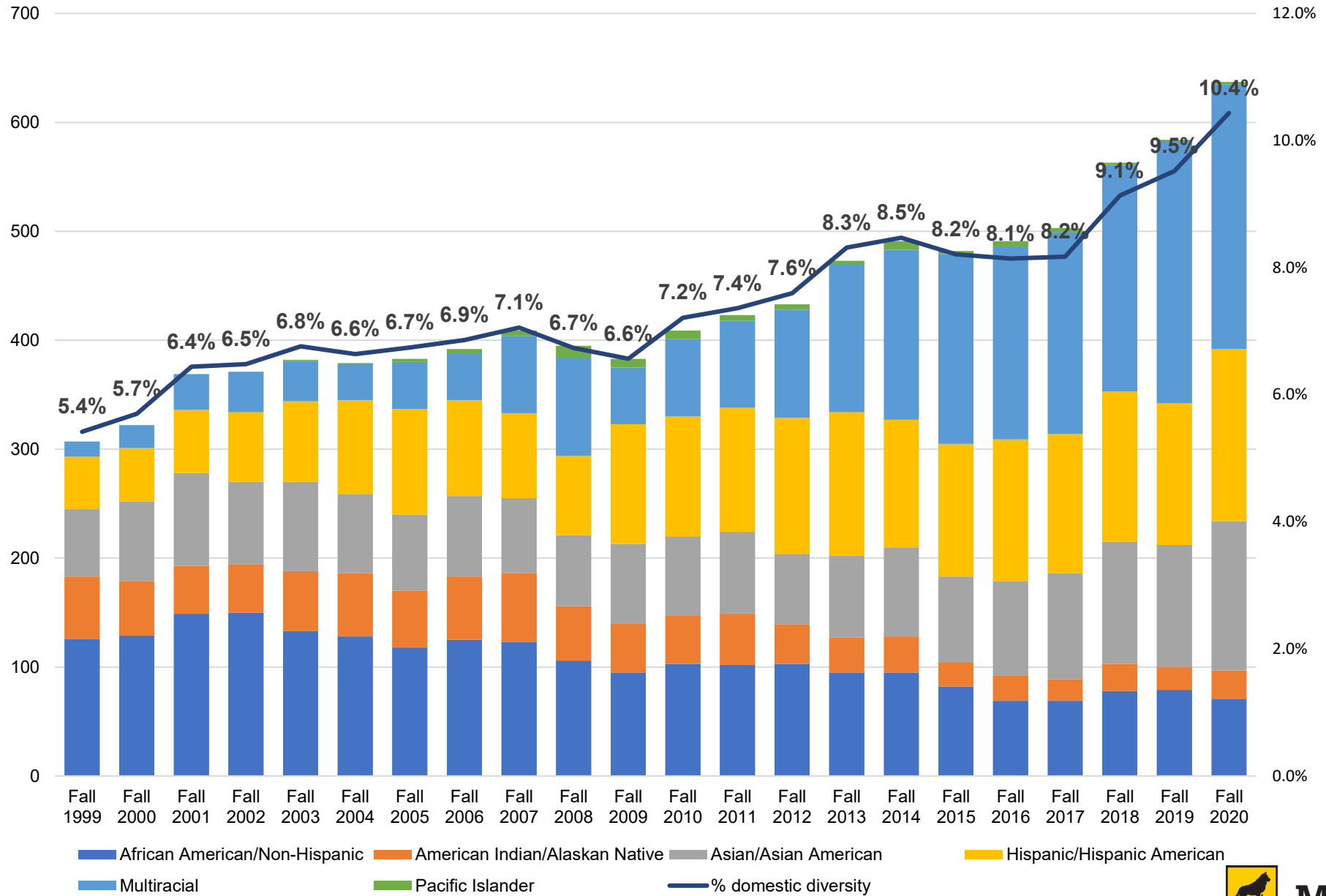
**Michigan Tech**



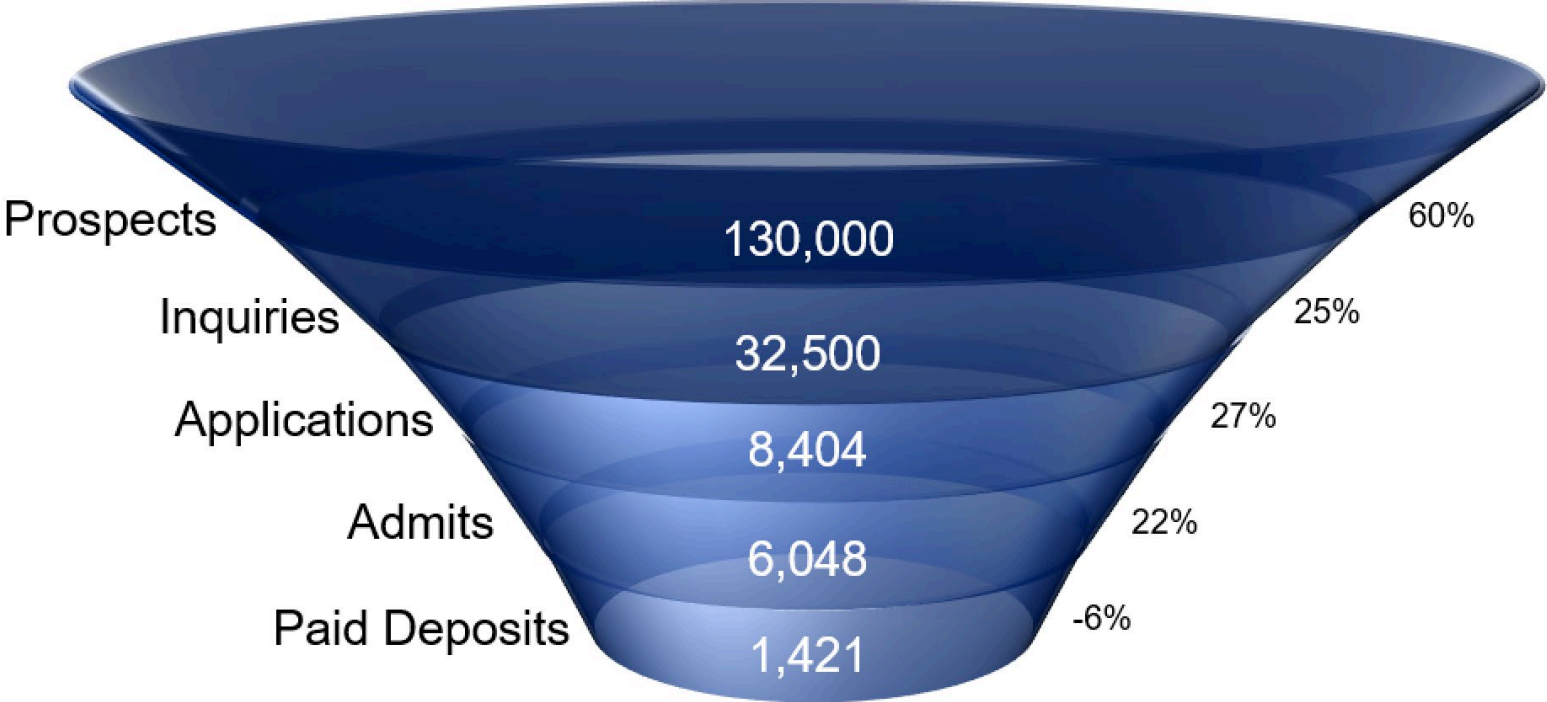
# Female Enrollment History



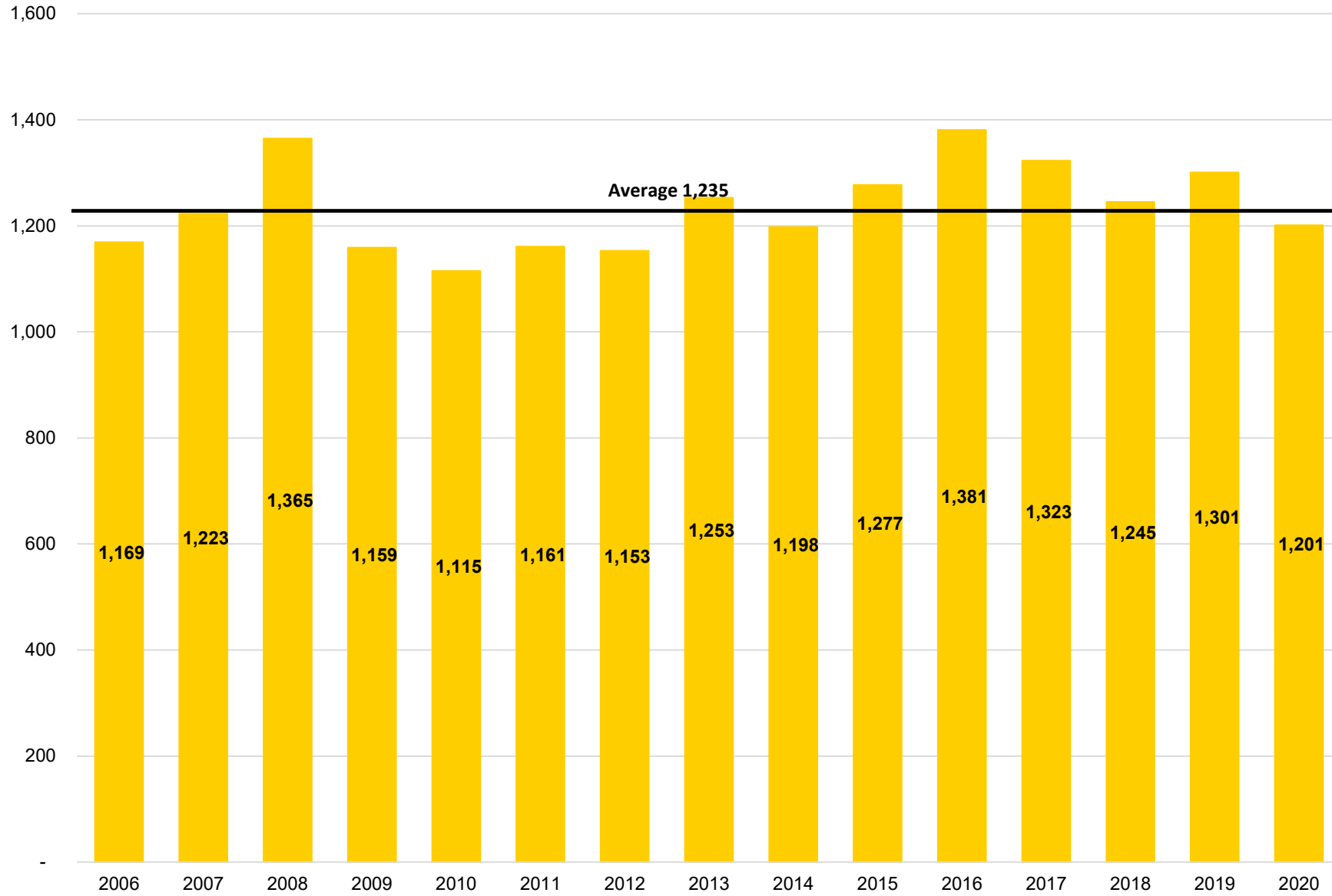
# Domestic Diversity



# 2020 Admissions Funnel Freshmen

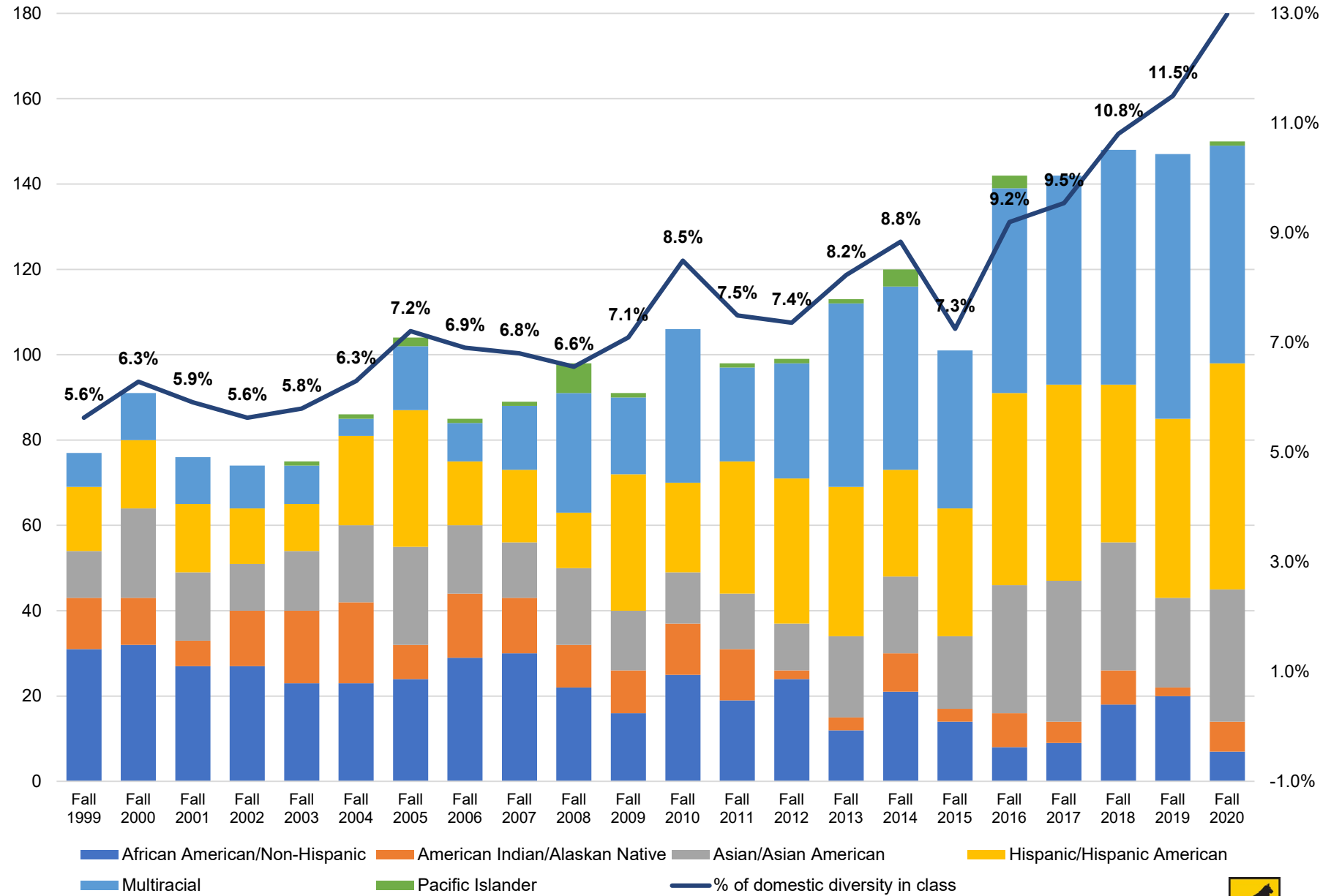


# Michigan Tech New Freshmen

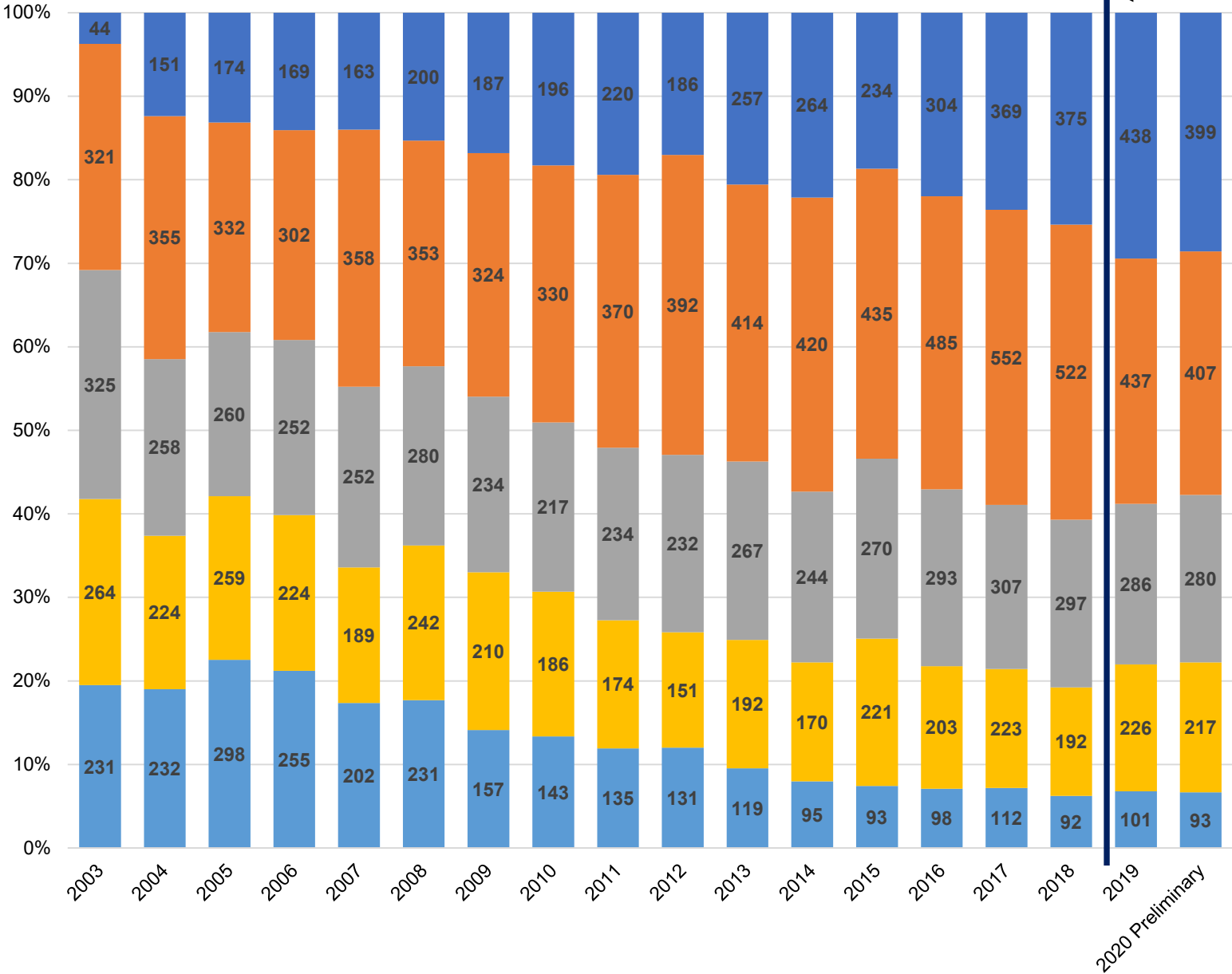




# Incoming UG Domestic Diversity



New UG students by Academic Index Tier

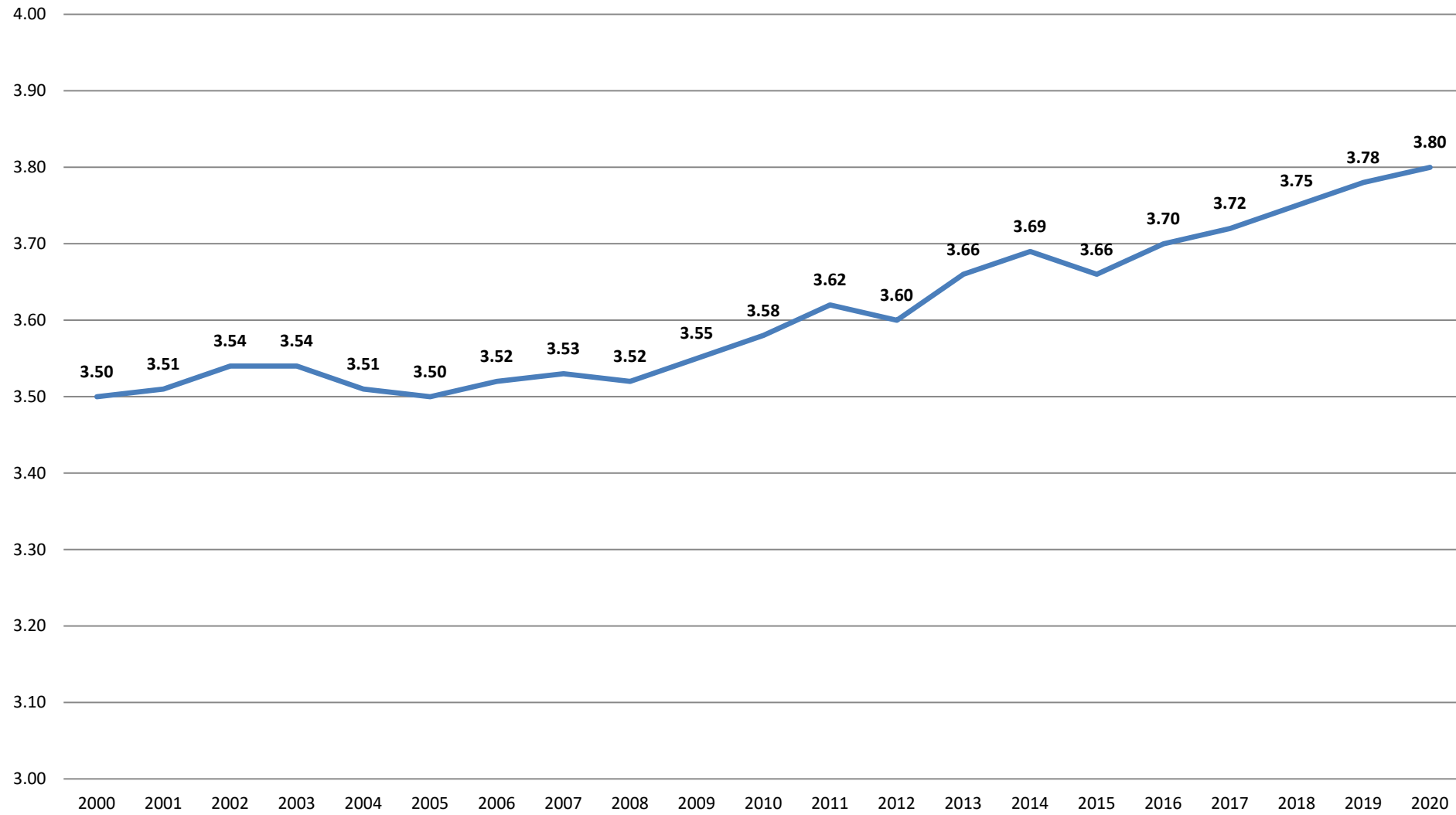


Recalibrated tiers for incoming class of 2019

- Academic Tier 1
- Academic Tier 2
- Academic Tier 3
- Academic Tier 4
- Academic Tier 5

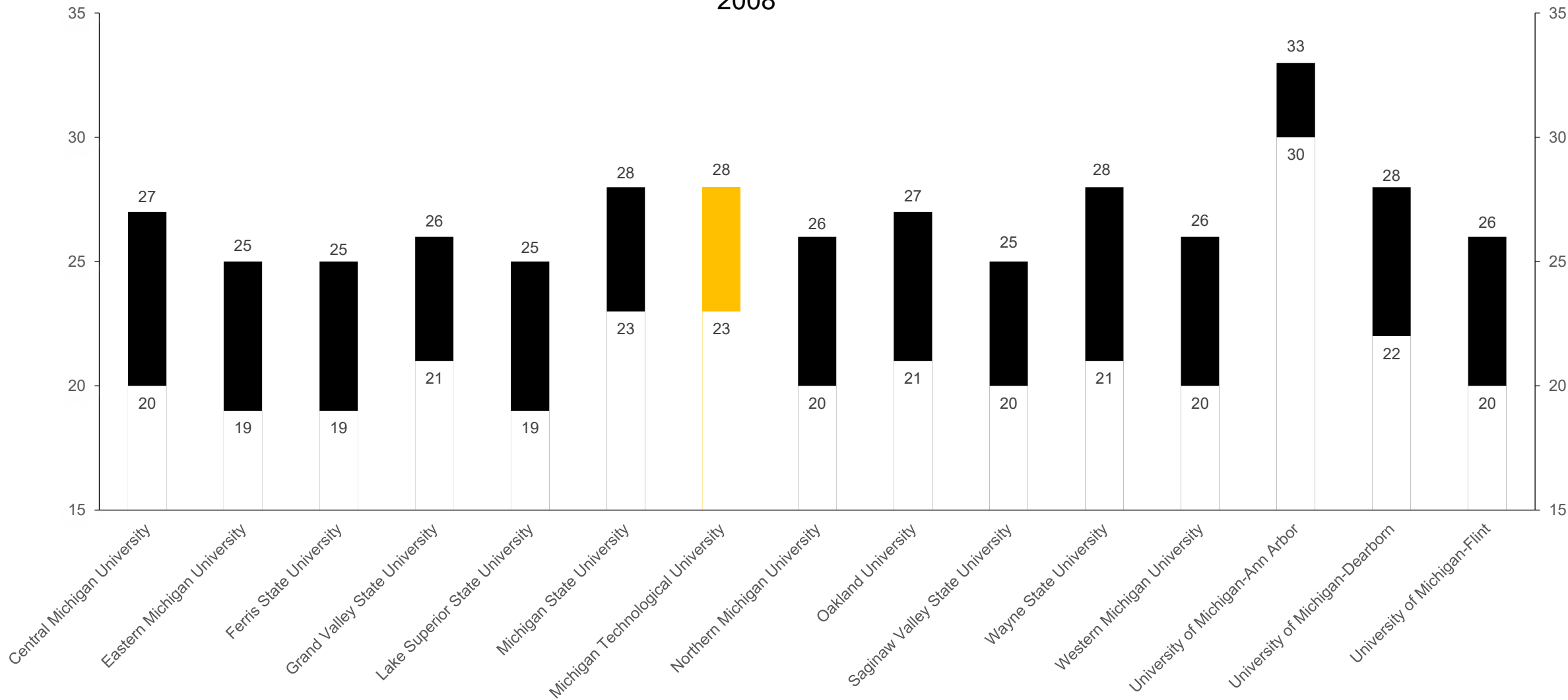


### Incoming Freshmen High School GPA



# ACT 25th and 75th Percentile

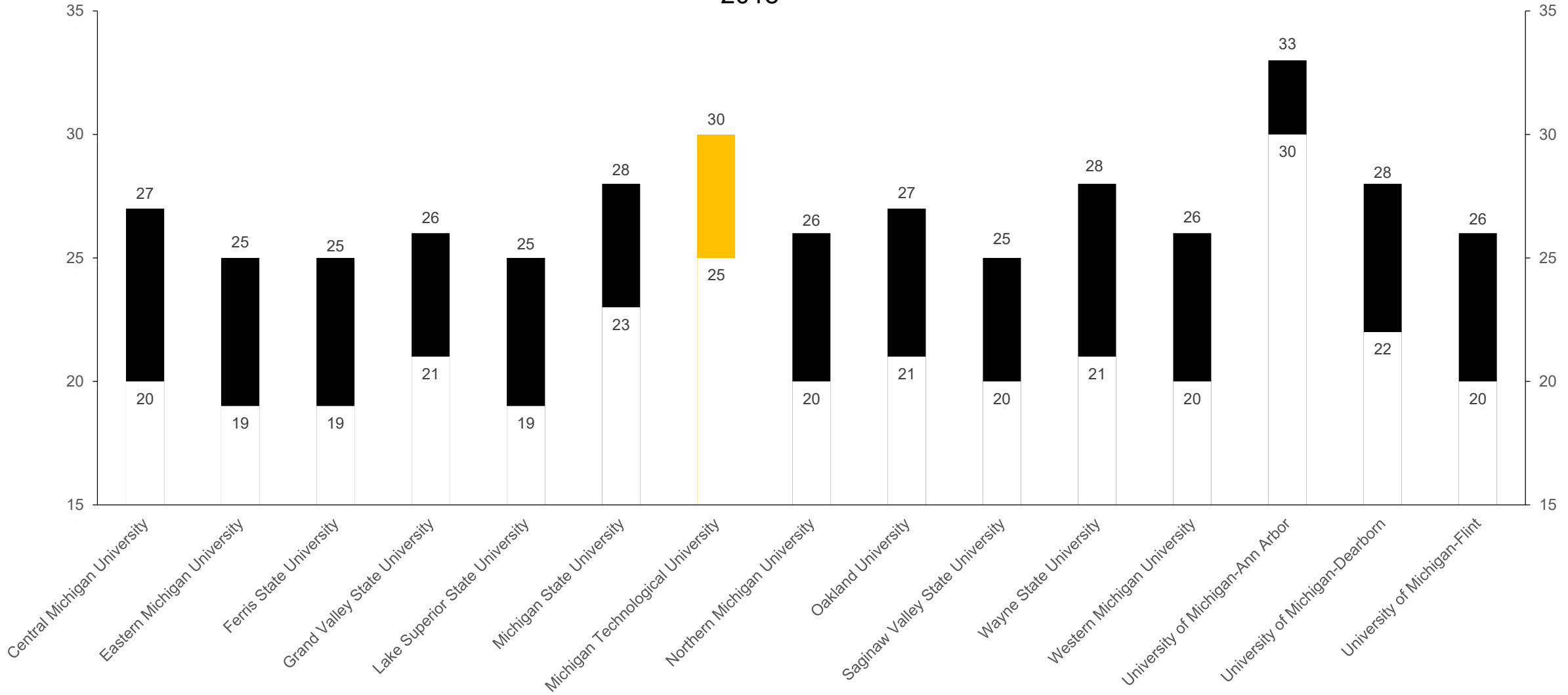
2008



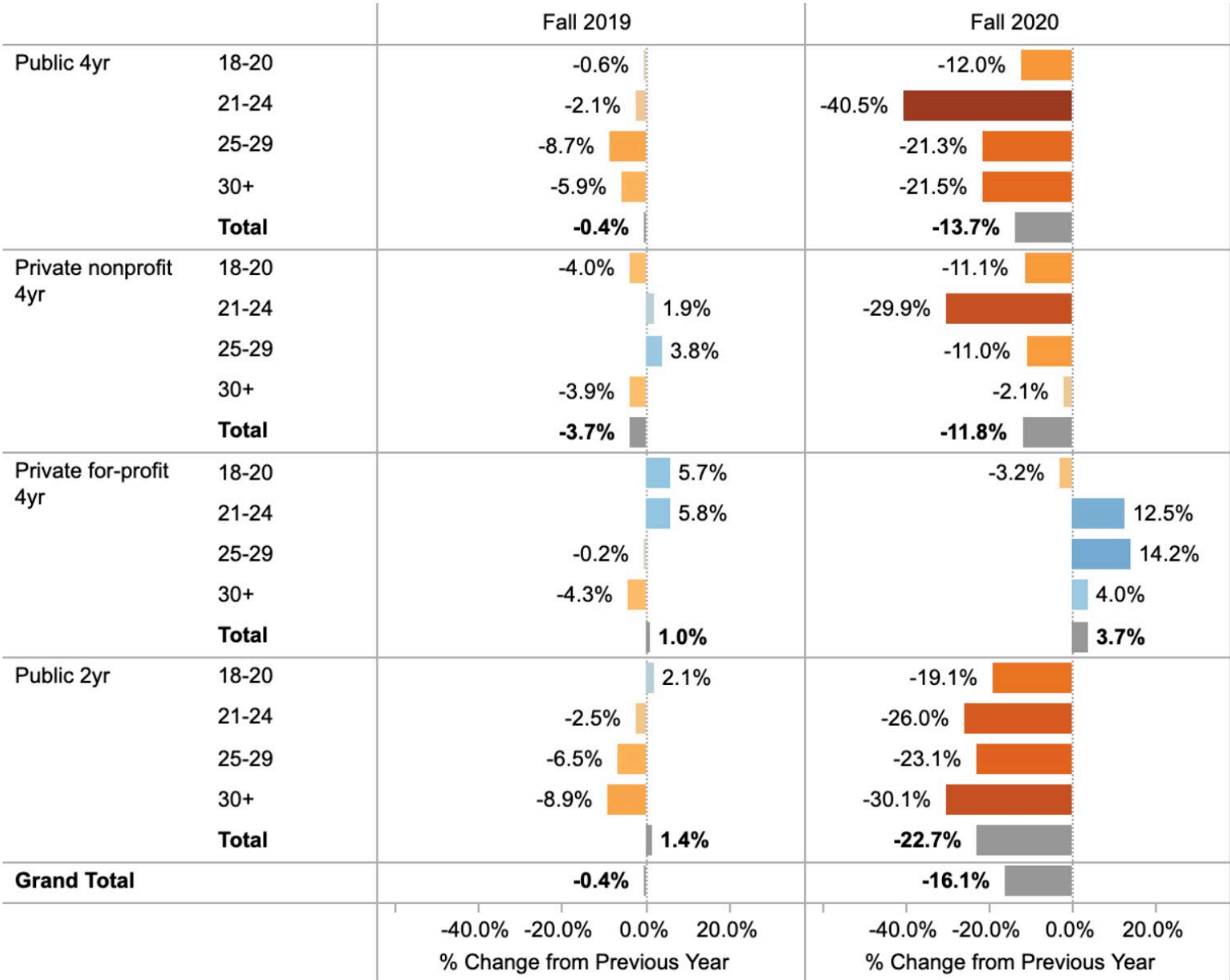


# ACT 25th and 75th Percentile

2018

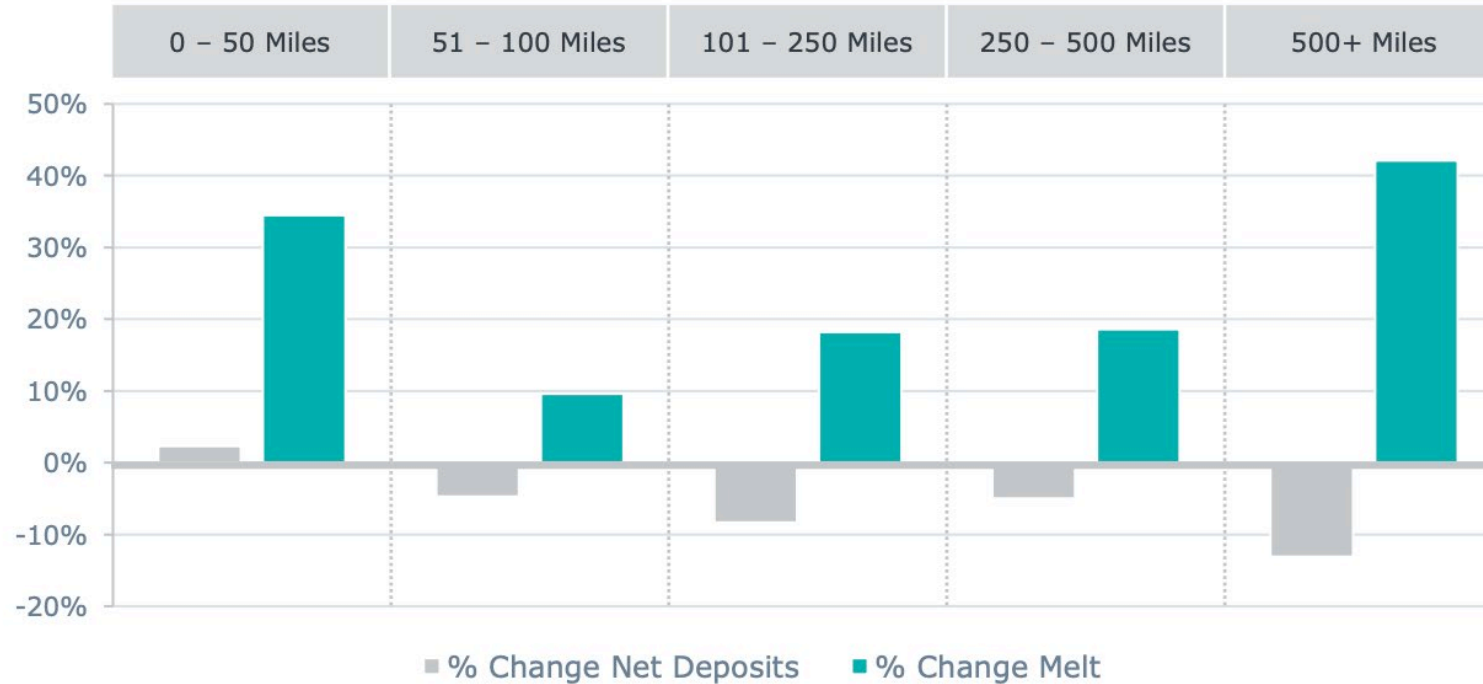


**Figure 4. First-time Beginning Student Enrollment Changes by Sector and Age**



# 1 year change in Freshmen enrollment by distance

## Net Deposit and Melt Change by Distance



N= 95,000 net deposits, 90 schools

©2020 by EAB. All Rights Reserved. [eab.com](http://eab.com)

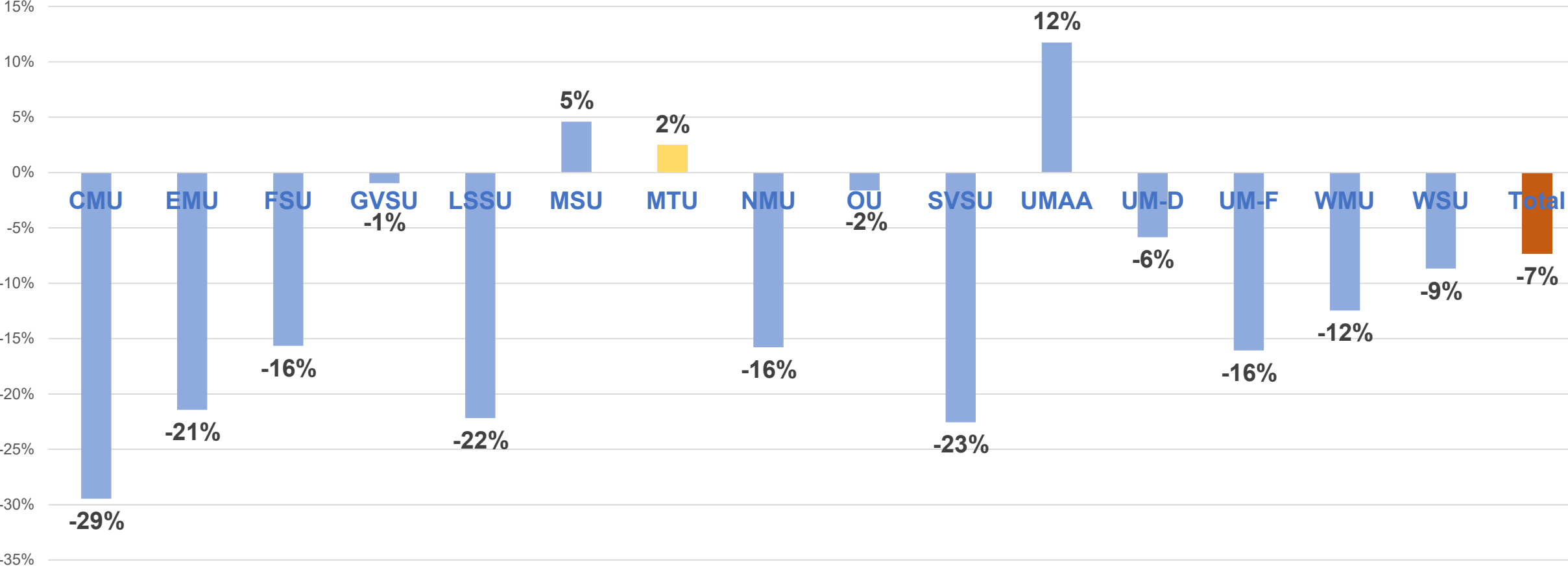


## Freshmen Enrollment 2020 Unofficial

	Freshmen	Overall
CMU	-15.1% (5th straight year of double digit % declines in freshmen)	-11%
EMU	-11.5%	-9%
FSU	-18.6%	-11%
GVSU	-9.7%	-3%
LSSU	+5.6 (they were -20% the year before)	-4%
MSU	-2.6%	-2%
MTU	-7.7%	-2%
NMU	-15.4%	-6%
OU	-15%	-3%
SVSU	-6%	-4%
UMAA	+.7%	0%
UMD	-1%	-3%
UMF	-7%	
WMU	-9.9%	-3%
WSU	+5.1%	-1%
Community colleges are mostly reporting double digit % decline in new student enrollment		



### 2012-2019 change in UG enrollment

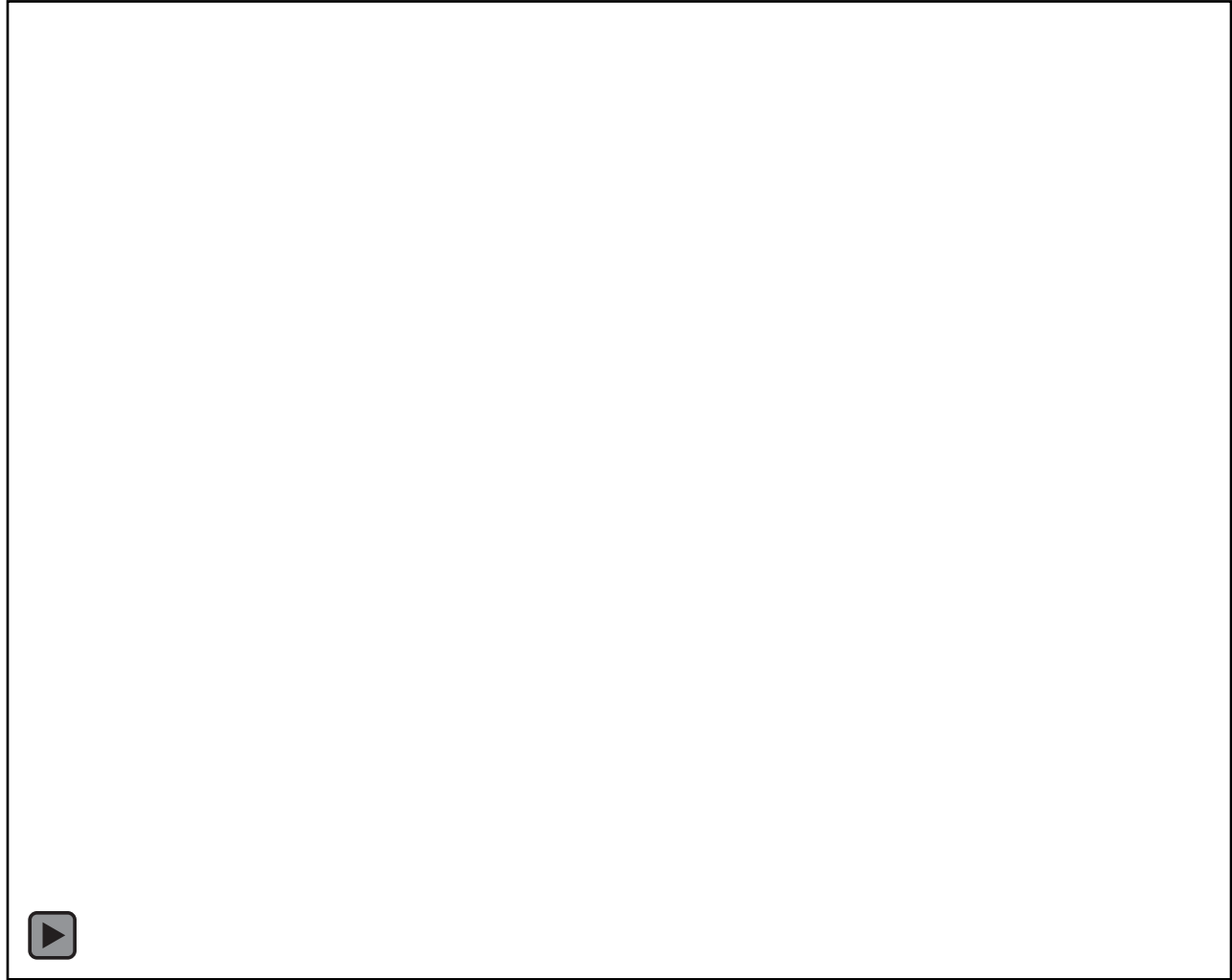


# Enrollment Variance Summary

	Fall 2019	COVID Scenario #2	Sept 8 Enrollment Report	Sept 10 Enrollment Report change from COVID #2 budget	Sept 10 Enrollment Report % change from COVID #2 budget
Returning UG	4303	3882	4292	410	11%
Returning Grad	850	720	934	214	30%
Incoming UG	1460	1316	1350	34	3%
Incoming Grad	423	176	291	115	65%
<b>Total</b>	<b>7036</b>	<b>6094</b>	<b>6867</b>	<b>773</b>	<b>13%</b>



THANK YOU



**Michigan Tech**