

# Sponsored Program Summary Unaudited FY18 and 1<sup>st</sup> Quarter FY19 Activities

David Reed

Vice President for Research

December, 2018



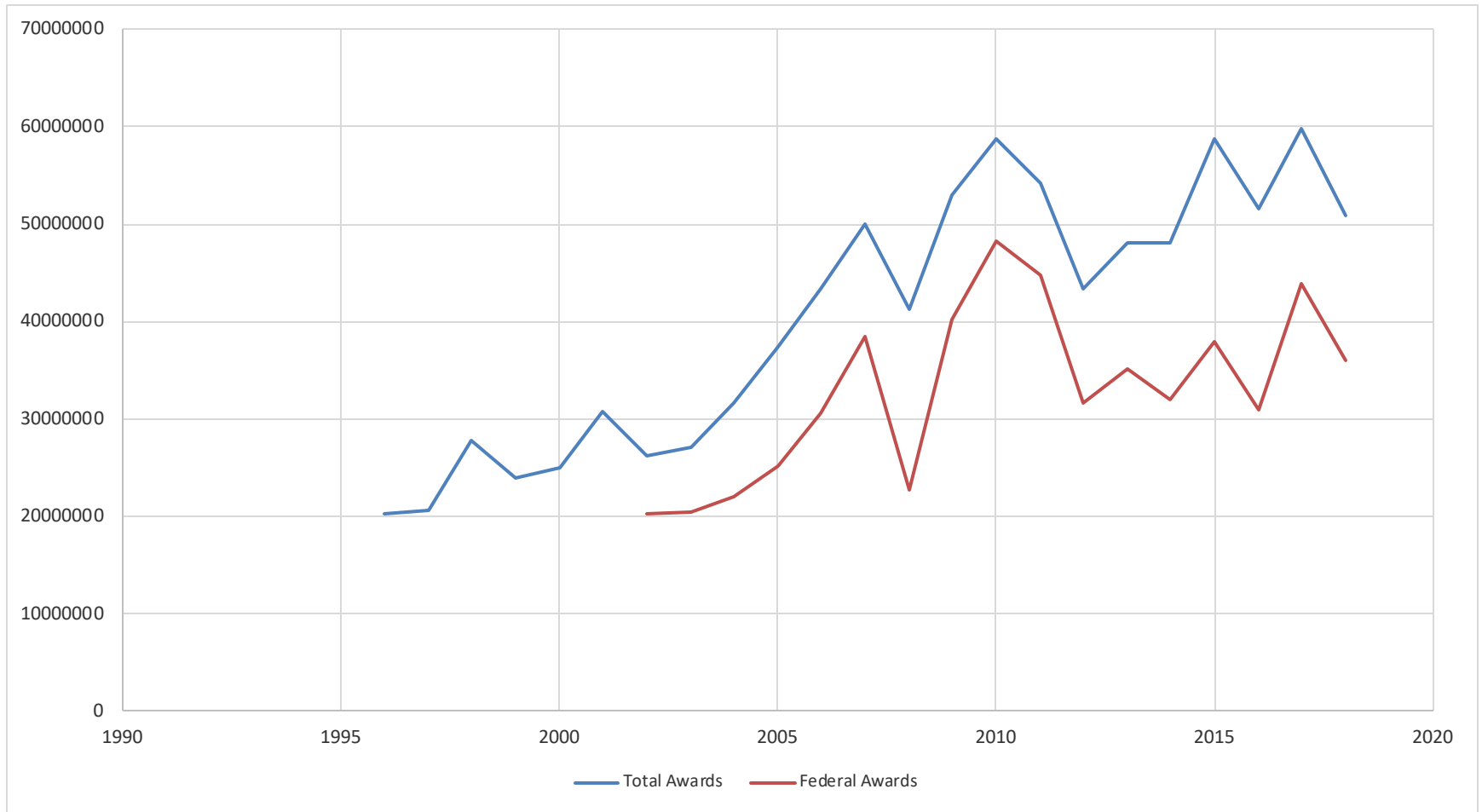
**Michigan  
Technological**  
University

# Outline

- Unaudited Results FY18
  - Sponsored Awards
  - Research Expenditures
  - Intellectual Property/Commercialization
  - Corporate Sponsorship
- 1<sup>st</sup> Quarter FY19
  - Sponsored Awards
  - Research Expenditures
- Benchmarking



# Sponsored Awards, Unaudited FY18

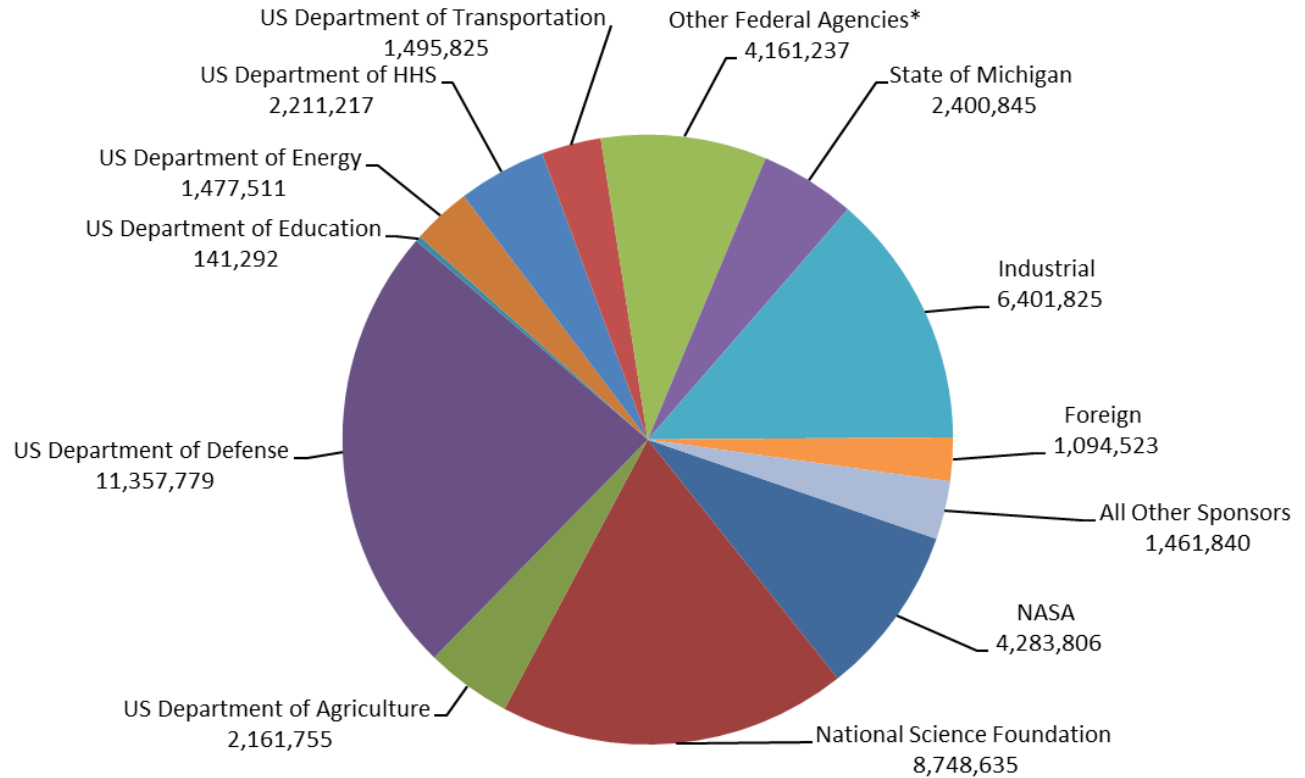


# Sponsored Awards, Unaudited FY18

Sponsored Awards  
 Fiscal Year 2018  
 4th Quarter  
 Ended June 30, 2018  
 TOTAL: \$50,891,645

Pre-Proposals Submitted  
 (excluded from Proposals  
 Submitted figures below)

FYTD 2017: 56  
 FYTD 2018: 52



**Michigan  
 Technological  
 University**

# Sponsored Awards, Unaudited FY18

Sponsor	Proposals Submitted		Awards Received		Awards Received (\$)		Variance \$	Variance %
	FY '18 as of 6/30	FY '17 as of 6/30	FY '18 as of 6/30	FY '17 as of 6/30	FY '18 as of 6/30	FY '17 as of 6/30		
NASA	55	58	21	35	4,283,806	3,004,822	1,278,984	42.6%
National Science Foundation	178	168	54	60	8,748,635	11,268,683	-2,520,048	-22.4%
US Department of Agriculture	51	69	59	43	2,161,755	3,977,021	-1,815,266	-45.6%
US Department of Defense	109	90	89	100	11,357,779	12,680,388	-1,322,609	-10.4%
US Department of Education	3	2	2	3	141,292	382,898	-241,606	-63.1%
US Department of Energy	43	30	16	17	1,477,511	4,908,866	-3,431,355	-69.9%
US Department of HHS	57	47	10	10	2,211,217	1,703,759	507,458	29.8%
US Department of Transportation	14	15	9	22	1,495,825	3,264,556	-1,768,731	-54.2%
Other Federal Agencies*	45	52	35	35	4,161,237	2,722,642	1,438,595	52.8%
<b>Federal Agency Total</b>	<b>555</b>	<b>531</b>	<b>295</b>	<b>325</b>	<b>36,039,057</b>	<b>43,913,635</b>	<b>-7,874,578</b>	<b>-17.9%</b>
State of Michigan	47	31	30	20	2,400,845	1,770,931	629,914	35.6%
Industrial	168	200	148	190	6,401,825	7,068,997	-667,172	-9.4%
Foreign	30	17	20	17	1,094,523	1,184,275	-89,752	-7.6%
All Other Sponsors	82	93	43	40	1,461,840	1,570,066	-108,226	-6.9%
<b>Subtotal</b>	<b>882</b>	<b>872</b>	<b>536</b>	<b>592</b>	<b>47,398,090</b>	<b>55,507,904</b>	<b>-8,109,814</b>	<b>-14.6%</b>
Gifts**	N/A	N/A	281	305	3,468,475	4,179,577	-711,102	-17.0%
Crowd Funding	N/A	N/A	9	17	25,080	26,902	-1,822	-6.8%
<b>Grand Total</b>	<b>882</b>	<b>872</b>	<b>826</b>	<b>914</b>	<b>50,891,645</b>	<b>59,714,383</b>	<b>-\$8,822,738</b>	<b>-14.8%</b>

\* US Dept of the Interior, US Dept of Housing and Urban Development, US Dept of Commerce, National Endowments for the Arts & Humanities, US Environmental Protection Agency, US Dept of Labor, US Small Business Administration, Office of the Director of National Intelligence

\*\*Gifts represent non-contractual funding from corporations, foundations, associations and societies in support of academic programs, scholarships/fellowships, student design & enterprise, research, youth programs and special programs.



**Michigan  
Technological  
University**

# Research Expenditures, Unaudited FY18

<b>College/School/Division</b>	<b>Preliminary FY2018</b>	<b>Preliminary FY2017</b>	<b>Variance</b>	<b>%</b>
Administration*	3,916,930	5,090,250	(1,173,320)	-23.1%
College of Engineering	30,848,486	25,217,506	5,630,980	22.3%
College of Science & Arts	17,149,933	16,643,420	506,513	3.0%
Great Lakes Research Center**	471,791	232,583	239,208	102.8%
Pavlis Honors College	385,246	298,791	86,455	28.9%
Keweenaw Research Center (KRC)	9,167,620	7,928,461	1,239,159	15.6%
Michigan Tech Research Institute (MTRI)	9,047,027	8,412,594	634,433	7.5%
School of Business & Economics	1,411,668	1,353,978	57,690	4.3%
School of Forest Resources & Environmental Science	5,787,261	5,894,354	(107,093)	-1.8%
School of Technology	492,455	557,241	(64,806)	-11.6%
<b>Total</b>	<b>78,678,397</b>	<b>71,629,178</b>	<b>7,049,219</b>	<b>9.8%</b>

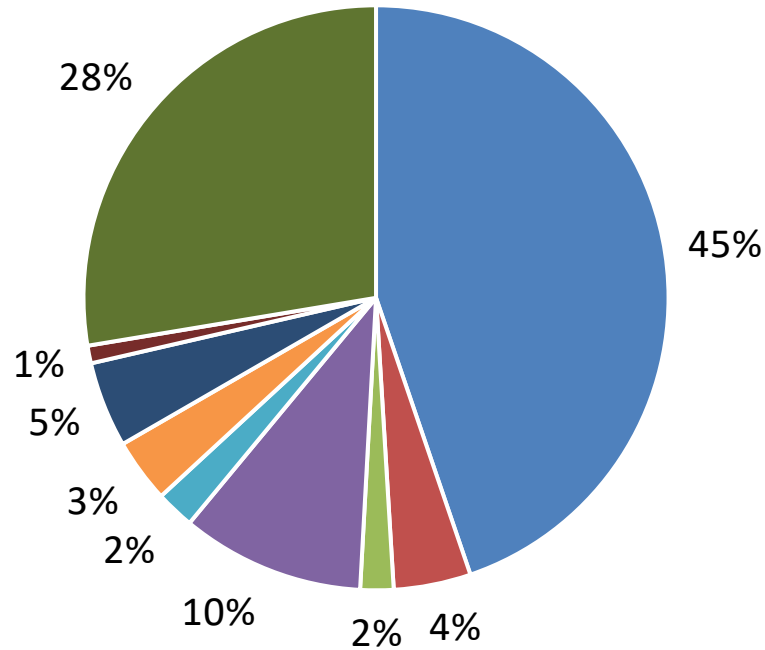
\*Includes the Vice Presidents, Provost, and others who report to a VP, Provost or the President. Except for the research institutes that report to the VPR.

\*\*Includes GLRC department (non-academic researchers) expenditures only. All other GLRC center expenditures are shown in the researchers' respective colleges.



**Michigan  
Technological  
University**

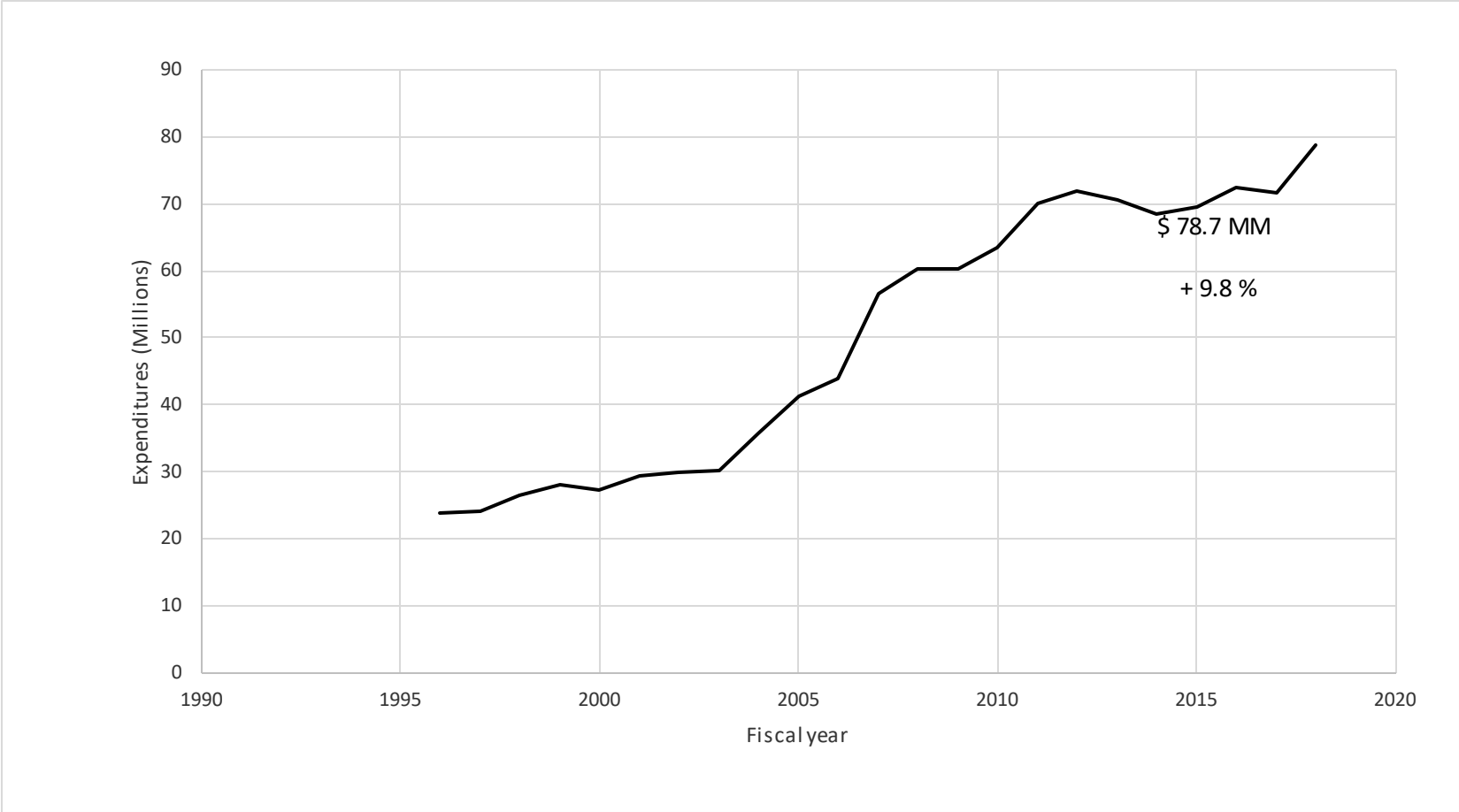
# Research Expenditure Utilization



- Compensation
- Contracted Services
- Travel
- Tuition and Fees
- Internal Services
- Other
- Capital Expenditures
- Supplies and Materials
- F&A Reimbursement



# Research Expenditures, Unaudited FY18





# Sponsored Awards and Research Expenditures, FY13-18

FY	Awards	Expenditures
2013	48,003,542	70,689,000
2014	48,162,964	68,525,000
2015	58,680,019	69,607,000
2016	51,661,818	72,536,000
2017	59,714,383	71,629,000
2018	50,891,645	78,678,000
2019	?	?



**Michigan  
Technological  
University**

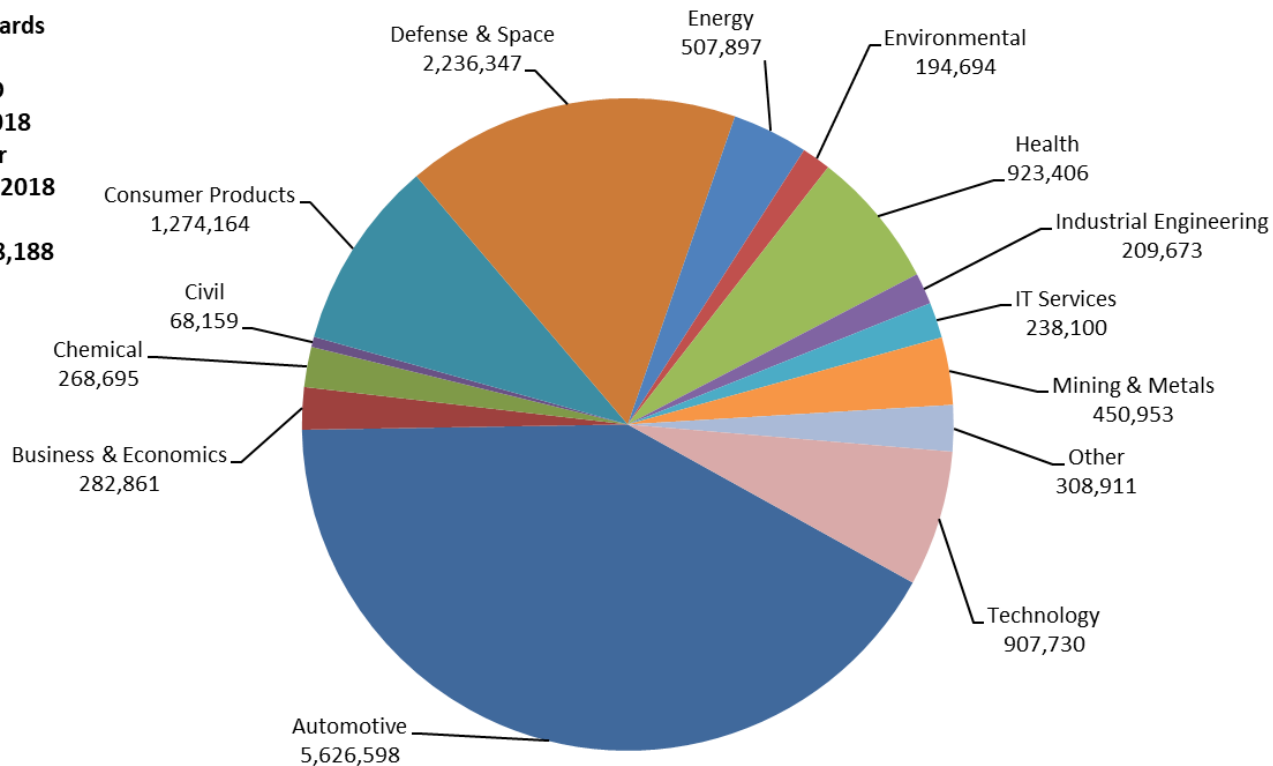
# Intellectual Property, Unaudited FY18

	2018	2017	+/- %
Disclosures Received	25	38	- 34 %
Nondisclosure Agreements	105	105	0 %
Patents Filed or Issued	27	17	59 %
License Agreements	14	18	- 22 %
Gross Royalties	354,545	326,169	9 %



# Corporate Sponsorship, Unaudited FY18

Sponsored Awards  
-Industry-  
COMBINED  
Fiscal Year 2018  
4th Quarter  
Ended June 30, 2018  
TOTAL: \$13,498,188



**Michigan  
Technological  
University**

# Sponsored Awards – 1<sup>st</sup> Quarter FY19

Sponsor	Proposals Submitted		Awards Received		Awards Received (\$)		Variance \$	Variance %
	FY '19 as of 09/30	FY '18 as of 09/30	FY '19 as of 09/30	FY '18 as of 09/30	FY '19 as of 09/30	FY '18 as of 09/30		
NASA	12	4	30	9	3,657,650	1,865,823	1,791,827	96.0%
National Science Foundation	43	42	29	22	6,197,468	3,708,586	2,488,882	67.1%
US Department of Agriculture	16	9	25	15	761,633	905,923	-144,290	-15.9%
US Department of Defense	34	20	32	24	4,273,161	2,953,136	1,320,025	44.7%
US Department of Education	2	1	-	-	-	-	-	N/A
US Department of Energy	8	5	4	4	426,094	200,761	225,333	112.2%
US Department of HHS	3	2	2	4	814,721	883,318	-68,597	-7.8%
US Department of Transportation	7	5	2	2	47,999	62,411	-14,412	-23.1%
Other Federal Agencies*	9	14	17	10	1,926,660	1,431,445	495,215	34.6%
<b>Federal Agency Total</b>	<b>134</b>	<b>102</b>	<b>141</b>	<b>90</b>	<b>18,105,386</b>	<b>12,011,403</b>	<b>6,093,983</b>	<b>50.7%</b>
State of Michigan	10	11	9	6	609,081	540,581	68,500	12.7%
Industrial	80	72	46	34	1,470,245	553,553	916,692	165.6%
Foreign	5	8	5	4	116,287	375,290	-259,003	-69.0%
All Other Sponsors	22	24	18	20	333,410	481,582	-148,172	-30.8%
<b>Subtotal</b>	<b>251</b>	<b>217</b>	<b>219</b>	<b>154</b>	<b>20,634,409</b>	<b>13,962,409</b>	<b>6,672,000</b>	<b>47.8%</b>
Gifts**	N/A	N/A	47	72	543,230	889,828	-346,598	-39.0%
Crowd Funding	N/A	N/A	4	1	7,844	93	7,751	8234.4%
<b>Grand Total</b>	<b>251</b>	<b>217</b>	<b>270</b>	<b>227</b>	<b>21,185,483</b>	<b>14,852,330</b>	<b>\$6,333,153</b>	<b>42.6%</b>

\* US Dept of the Interior, US Dept of Commerce, National Endowments for the Arts & Humanities, US Environmental Protection Agency, US Dept of Labor

\*\*Gifts represent non-contractual funding from corporations, foundations, associations and societies in support of academic programs, scholarships/fellowships, student design & enterprise, research, youth programs and special programs.



**Michigan  
Technological  
University**

# Research Expenditures – 1<sup>st</sup> Quarter FY19

<b>College/School/Division</b>	<b>FY2019</b>	<b>FY2018</b>	<b>Variance</b>	<b>%</b>
Administration*	1,734,428	1,459,336	275,092	18.9%
College of Engineering	6,427,621	6,008,224	419,397	7.0%
College of Science & Arts	2,854,628	3,285,365	(430,737)	-13.1%
Great Lakes Research Center**	87,840	52,536	35,304	67.2%
Pavlis Honors College	91,594	73,743	17,851	24.2%
Keweenaw Research Center (KRC)	1,723,948	1,907,754	(183,806)	-9.6%
Michigan Tech Research Institute (MTRI)	1,940,095	1,909,480	30,615	1.6%
School of Business & Economics	251,509	220,507	31,002	14.1%
School of Forest Resources & Environmental Science	1,157,429	1,163,564	(6,135)	-0.5%
School of Technology	167,019	151,079	15,940	10.6%
<b>Total</b>	<b>16,436,111</b>	<b>16,231,588</b>	<b>204,523</b>	<b>1.3%</b>

\*Includes the Vice Presidents, Provost, and others who report to a VP, Provost or the President. Except for the research institutes that report to the VPR.

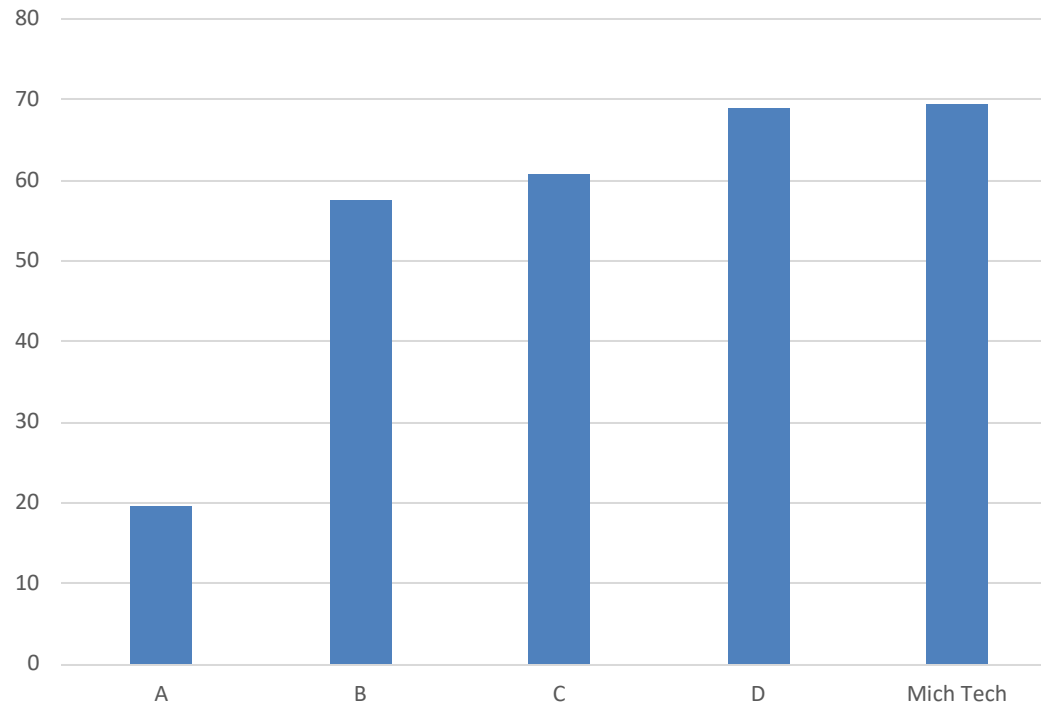
\*\*Includes GLRC department (non-academic researchers) expenditures only. All other GLRC center expenditures are shown in the researchers' respective colleges.



**Michigan  
Technological  
University**

# Benchmarking

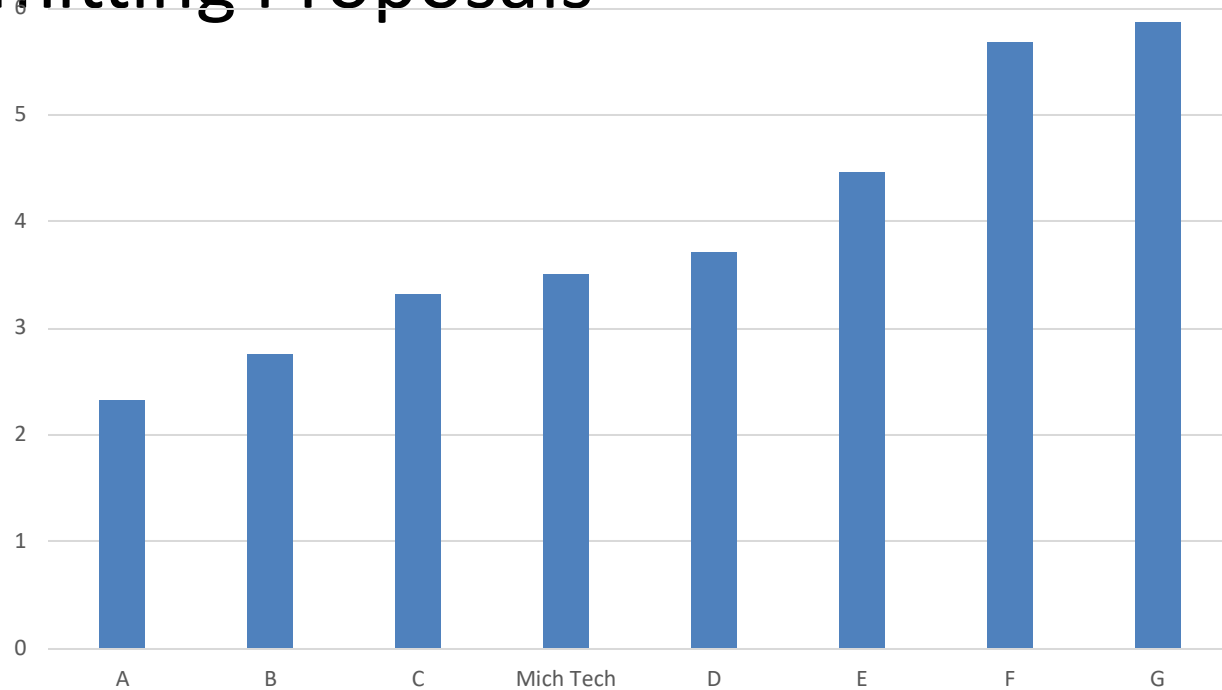
- Proportion of Faculty on Active Awards During FY17



**Michigan  
Technological  
University**

# Benchmarking

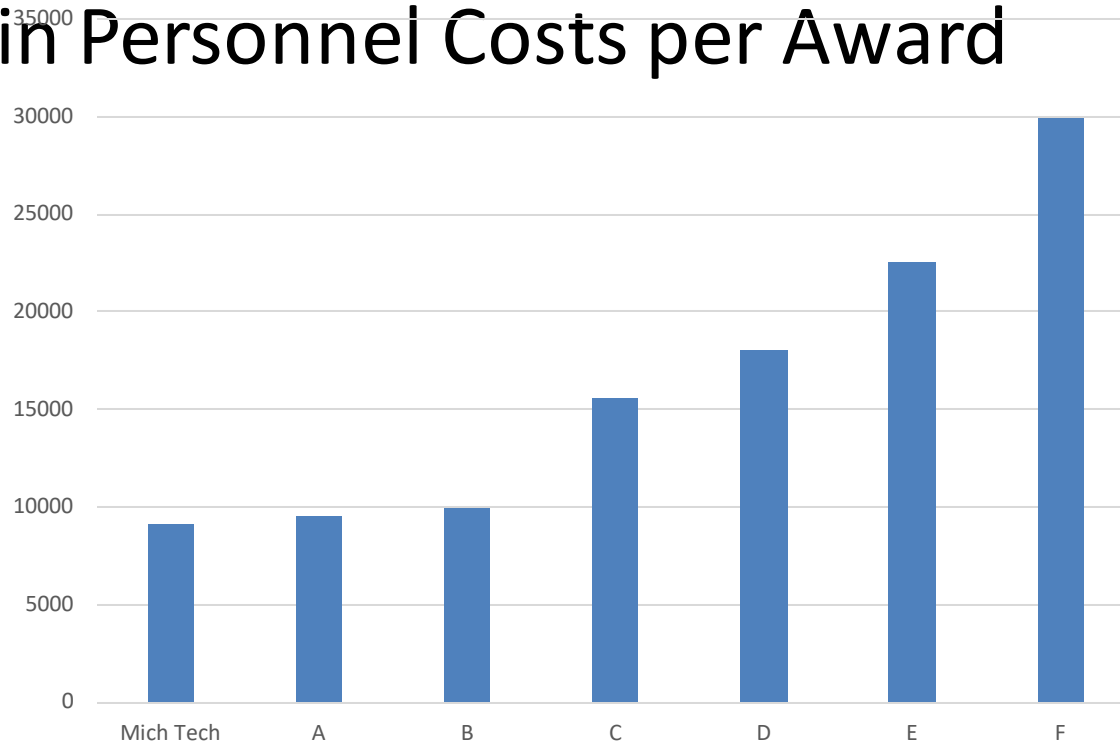
- Number of Submitted Proposals per Faculty Submitting Proposals



**Michigan  
Technological  
University**

# Benchmarking

- \$ of Departmental and Central Research Admin Personnel Costs per Award



**Michigan  
Technological  
University**





**Michigan  
Technological**  
University