

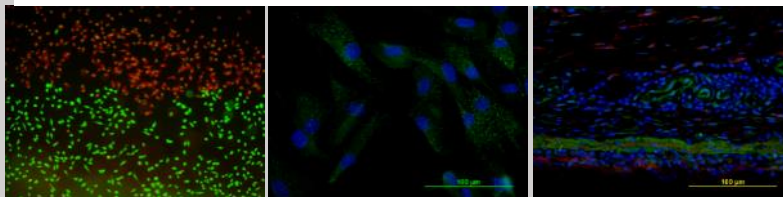
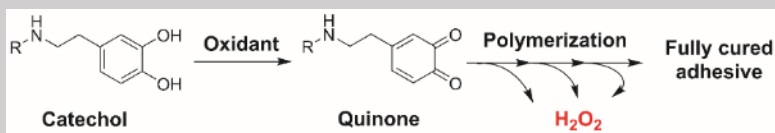


Bruce Lee

## Bioadhesive for Tissue Repair and Regeneration



## Polymeric Model System Development



# Bruce P. Lee

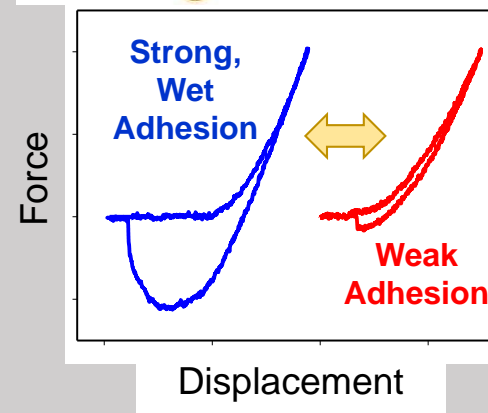
Biomimetic Biomaterials  
Polymer Chemistry, Bioadhesive,  
Smart Biomaterial and Adhesive



Chemistry from Mussel



## Underwater Smart Adhesive



## Re-shapeable Gel as Fit-to-Shape Sealant

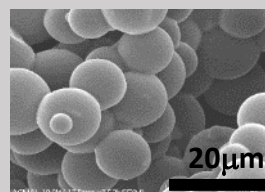


Remoldable Gel

Injectable Seal sutured anastomosis



Adhere to non-flat surface



## Recyclable and Anti-Pathogenic Microparticles

