



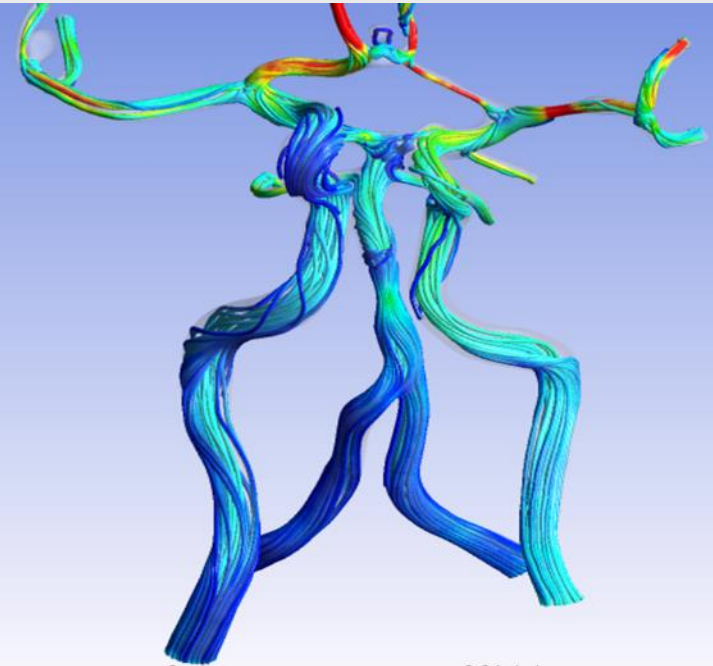
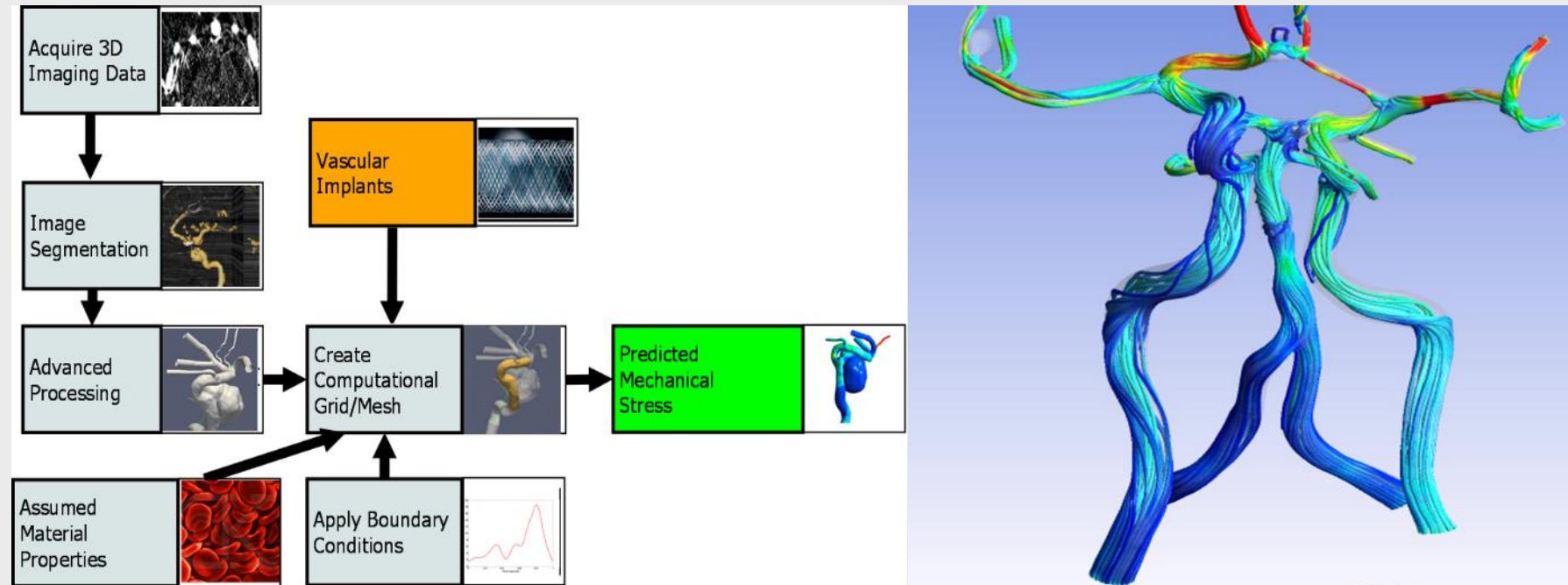
Jingfeng Jiang



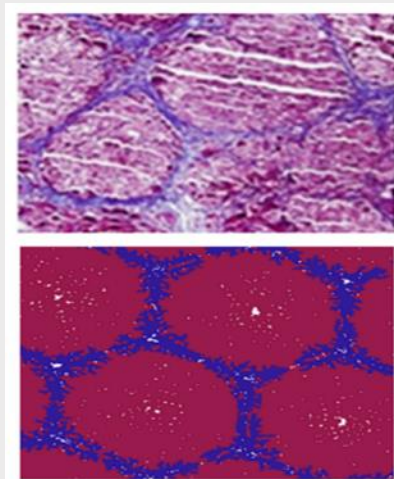
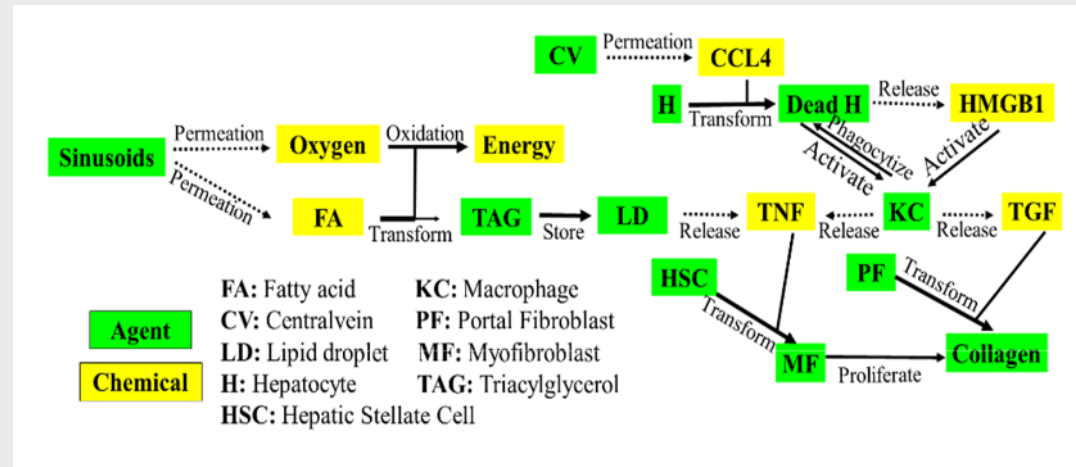
## Areas of research/expertise

Image-based Biomechanical Modeling and medical Imaging

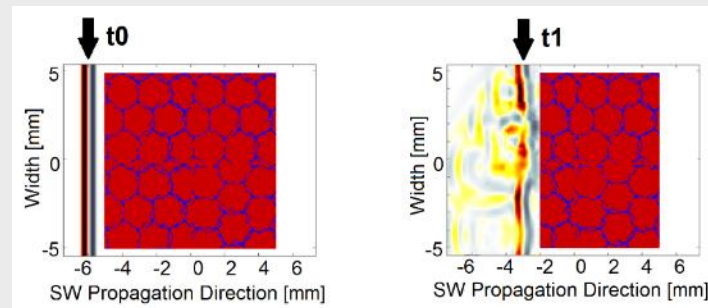
- “Patient-specific” Treatment Planning
- Flow Analytics for Clinical Applications.



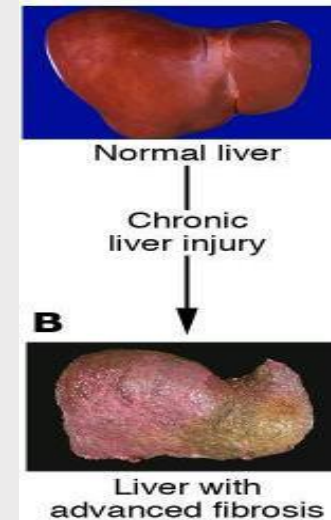
# Adding Biology to Medical Imaging



Virtual Tissue Model



Shear Wave Propagation



Clinical Diagnosis