

# CAMPUS FORUM

December 16, 2014

# Sexual Violence Awareness

- Title IX Coordinator
  - Beth Lunde
- Deputy Coordinators
  - Kirsti Arko and Joe Cooper for Students
  - Suzanne Sanregret for Athletics
- Title IX Awareness Committee
- Title IX Policy Team

# Sexual Violence Awareness

- Information and Resources
  - Web [www.mtu.edu/equity/need-know/title-ix/](http://www.mtu.edu/equity/need-know/title-ix/)
  - Posters
  - Wallet Cards
  - Trainings
- Mandated Training for All Employees
  - Sexual Harassment, Anti-Discrimination and Harassment, and Retaliation

# Further Resources

- Anti-harassment, Anti-discrimination: A Resource Guide
  - [www.mtu.edu/equity/pdfs/resourcebook.pdf](http://www.mtu.edu/equity/pdfs/resourcebook.pdf)
- Interested in assisting with initiatives and strategies for addressing gender discrimination, sexual harassment, and sexual violence
  - Contact Beth Lunde at [TitleIX@mtu.edu](mailto:TitleIX@mtu.edu)



# Strategic Plan

- Approved by Board of Control on April 27, 2012
  - ✓ Major Goals Remain Same
    - People
    - Distinctive Education
    - Research/Scholarship/Creativity/Entrepreneurship
- <http://www.mtu.edu/stratplan/>

# Strategic Plan Review Timeline, 2015

**Preliminary Activities** - Spring 2014

**Campus Comment Period** - August-September 2014

**Deans Revision** - October 2014

**Review with Board of Control** - December 2014

**Campus Comment Period** - December 2014 – February 2015

**Preliminary Final Draft** - March 2015

**Final Board of Control Approval** - May 2015

# Strategic Plan

- Approved by Board of Control on April 27, 2012
  - ✓ Major Goals Remain Same
    - People

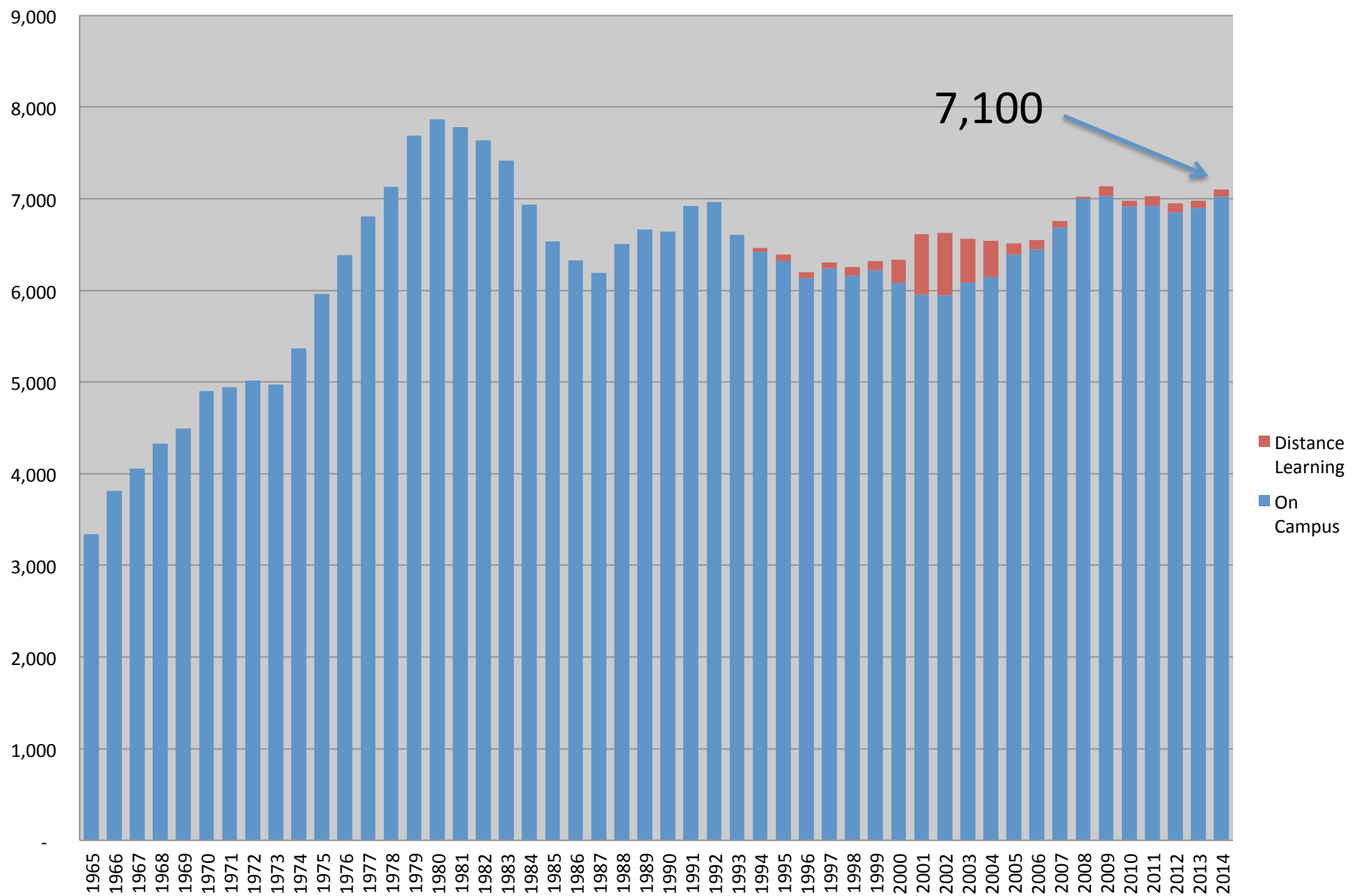
# Fall Enrollment

Undergraduate	5658
Graduate	<u>1442</u>
Total Enrollment	
7100	

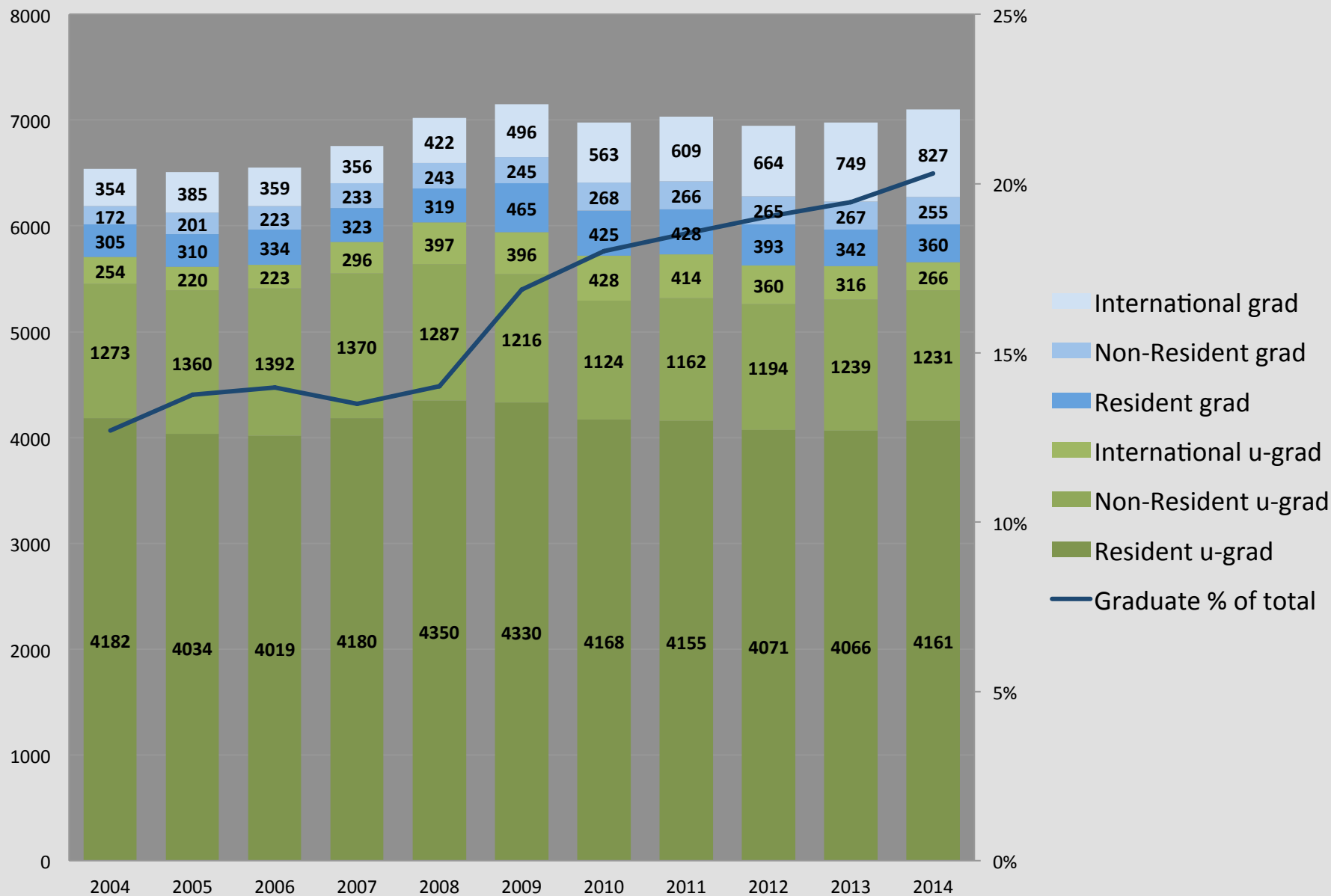
# Fall Statistics

- Retention (first to second year UG) 85%
- ACT Composite Average 27
- Female Enrollment in COE 1005  
(Women make up 22% of COE; ties the all time high set in 1998)
- Placement Rate 96%

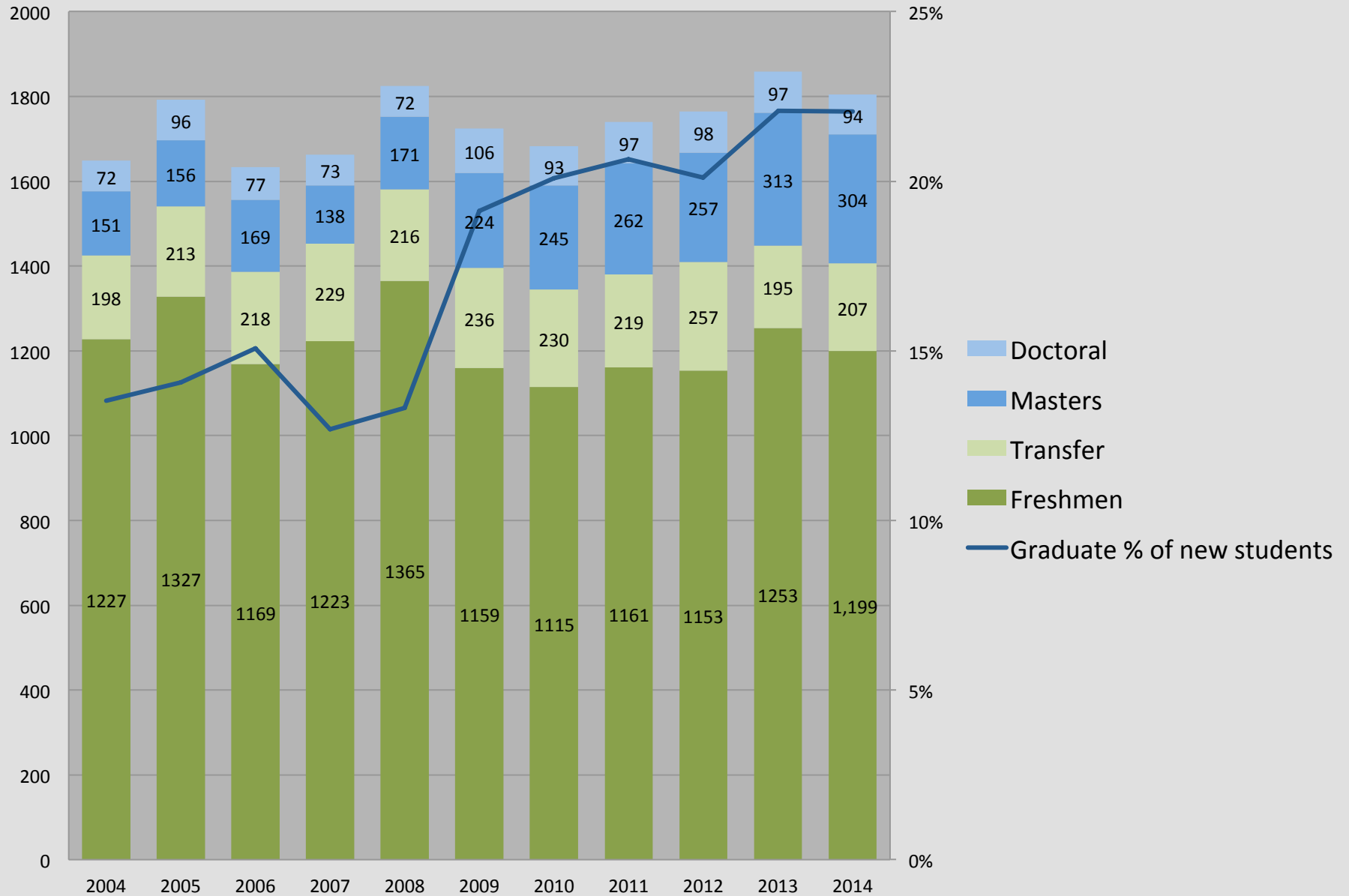
## Fall Enrollment 1965-2014



# Total Enrollment by Student Type

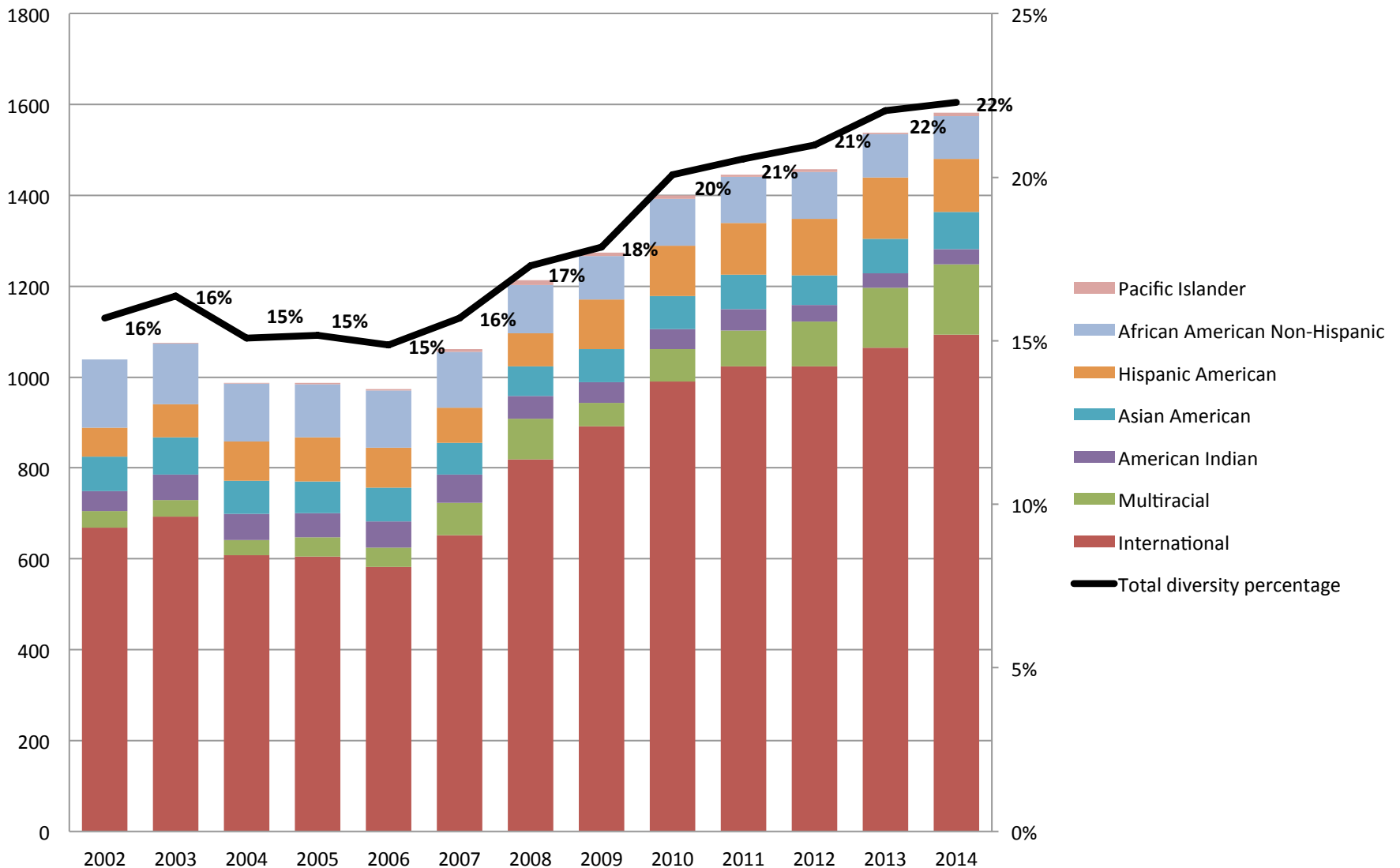


## New Student Enrollment by Student Type

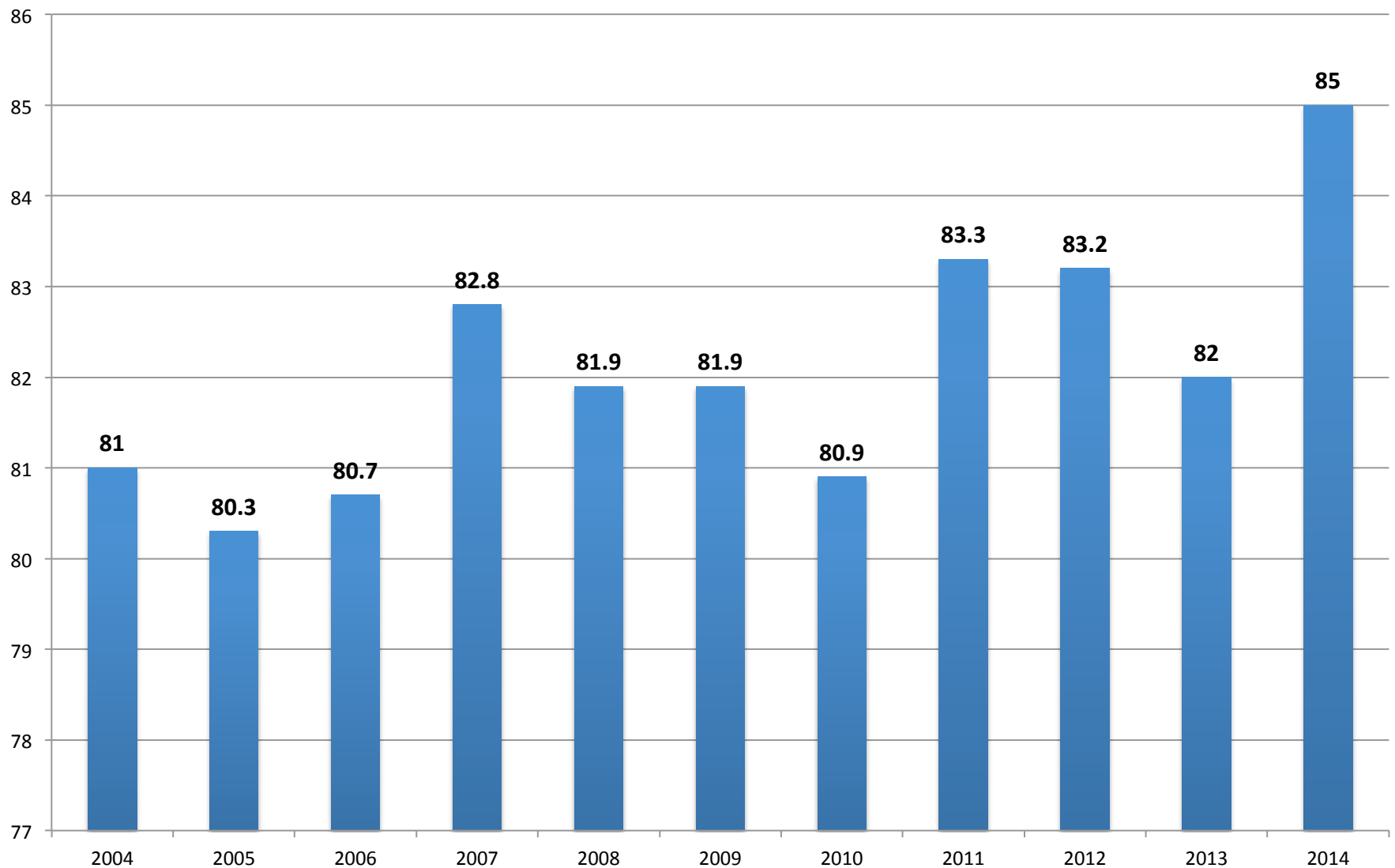




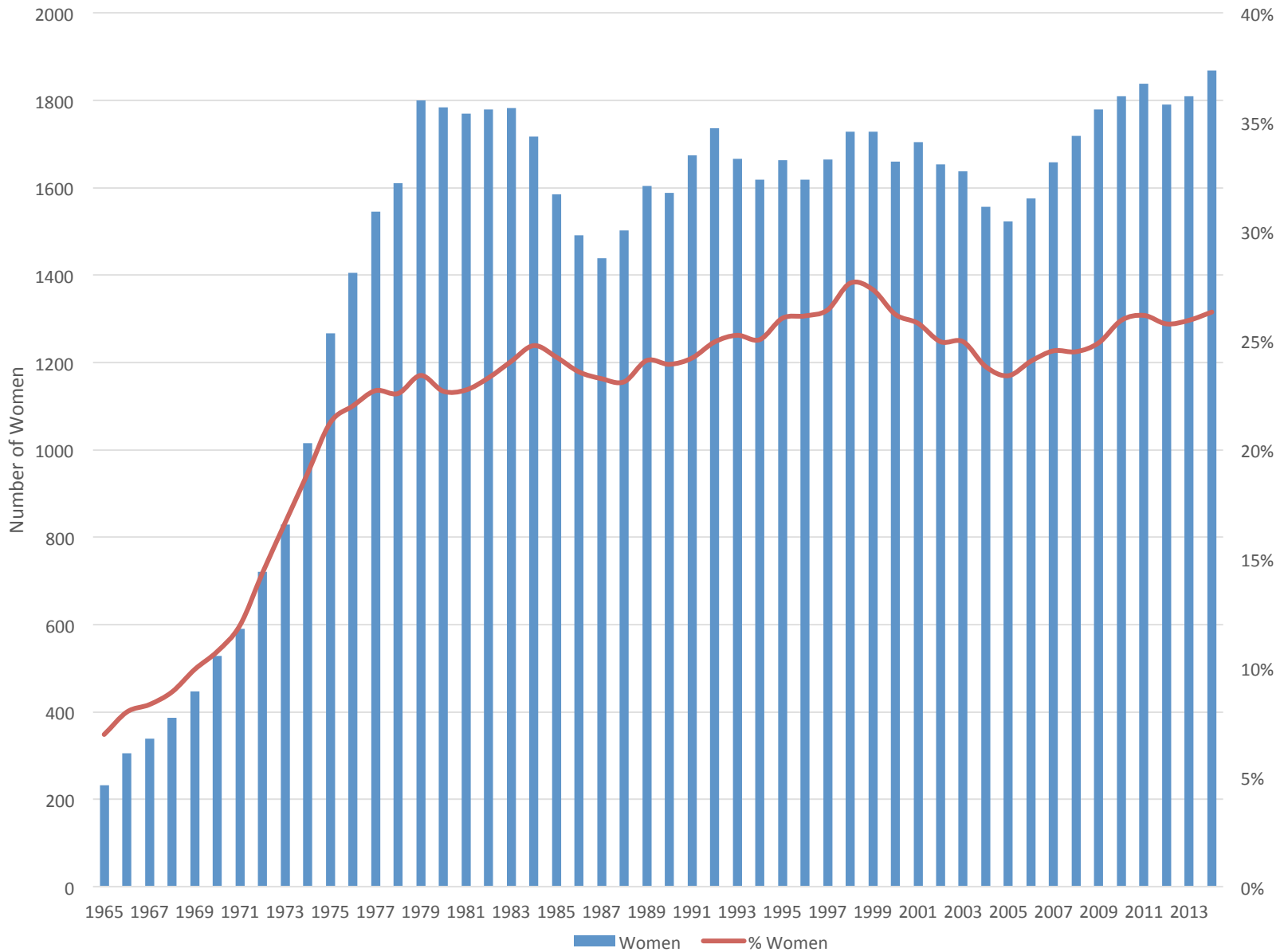
# Total Domestic and International Diversity



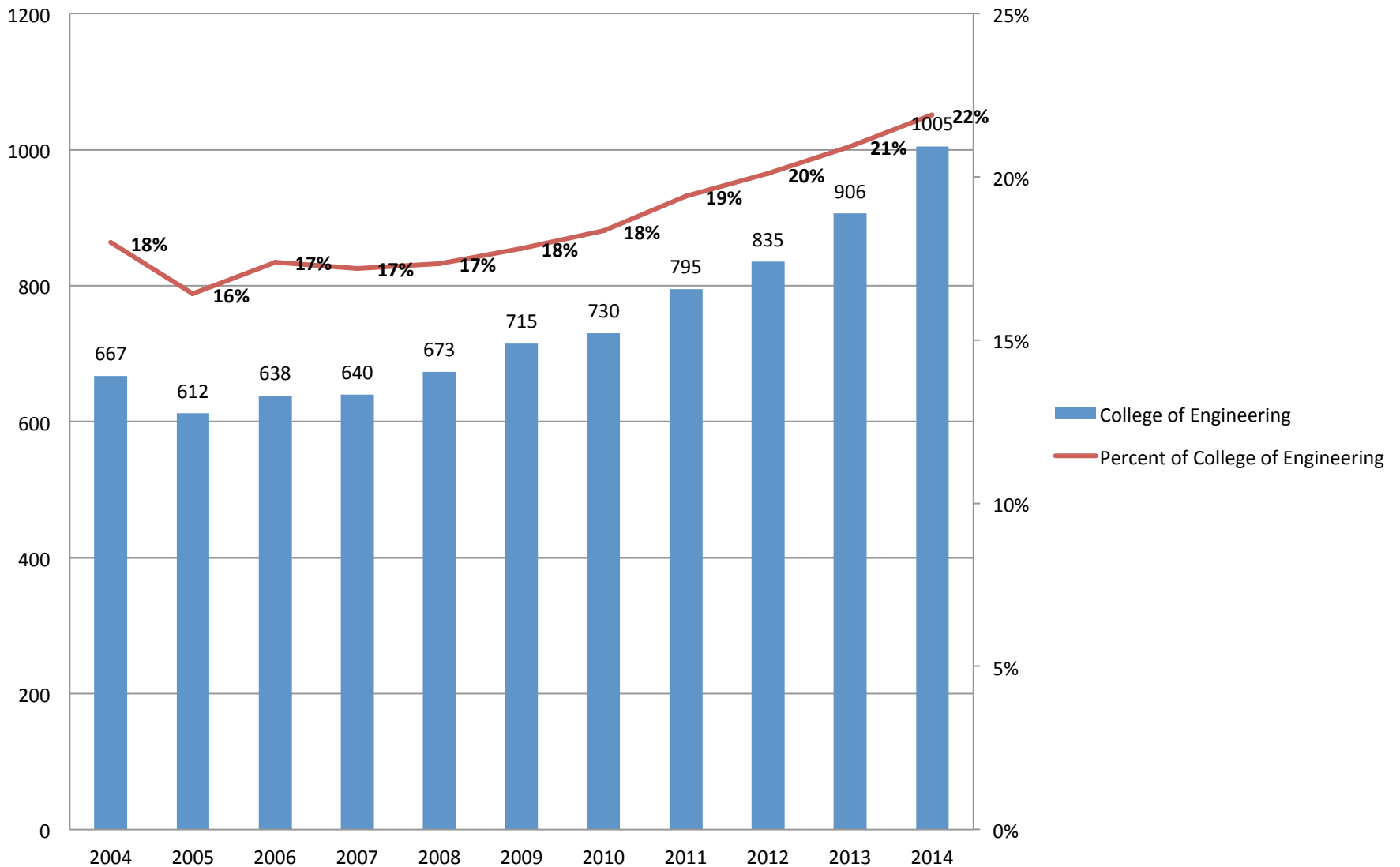
## Retention rate 2004-2014



## History of female enrollment at Michigan Tech



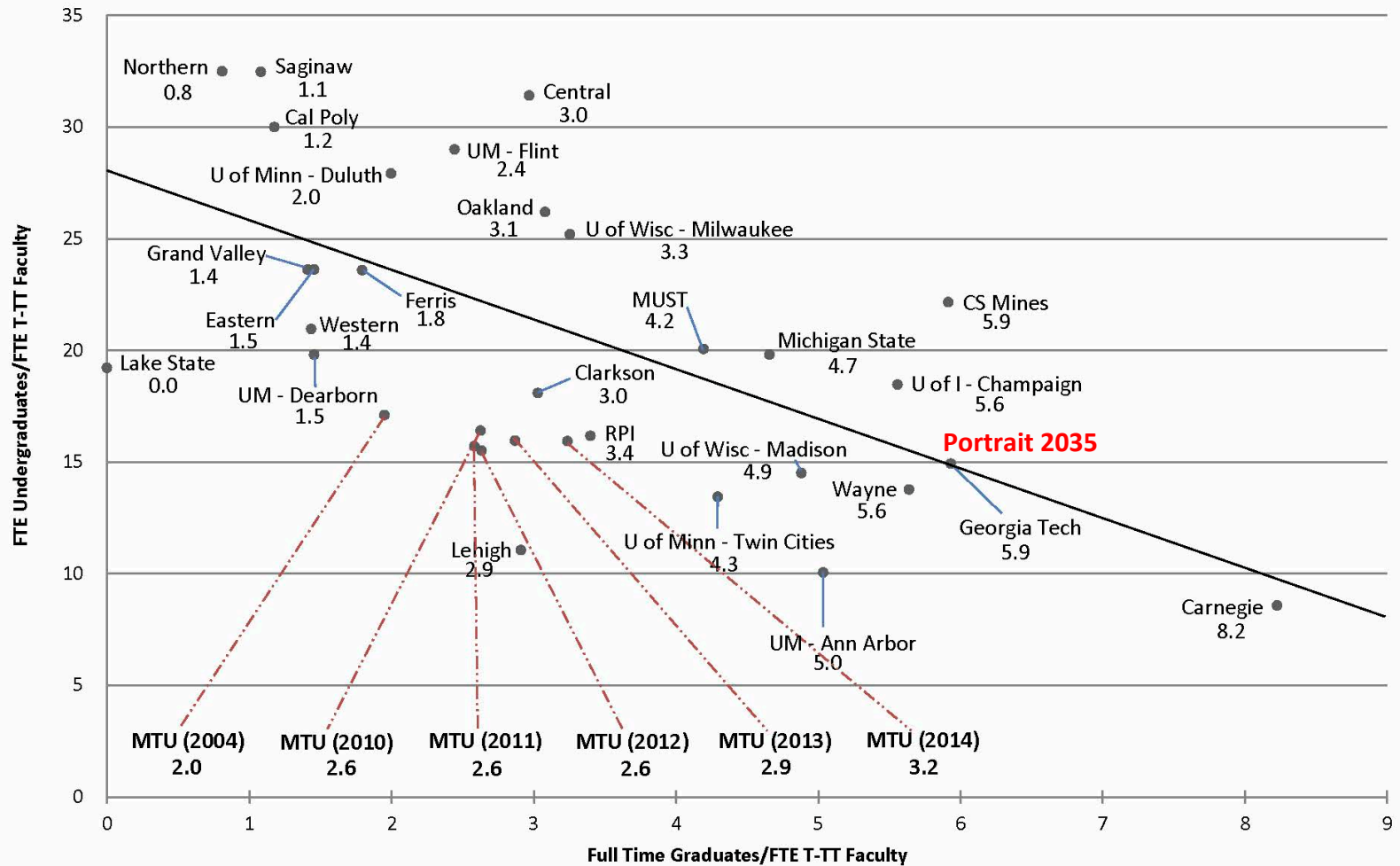
## College of Engineering females



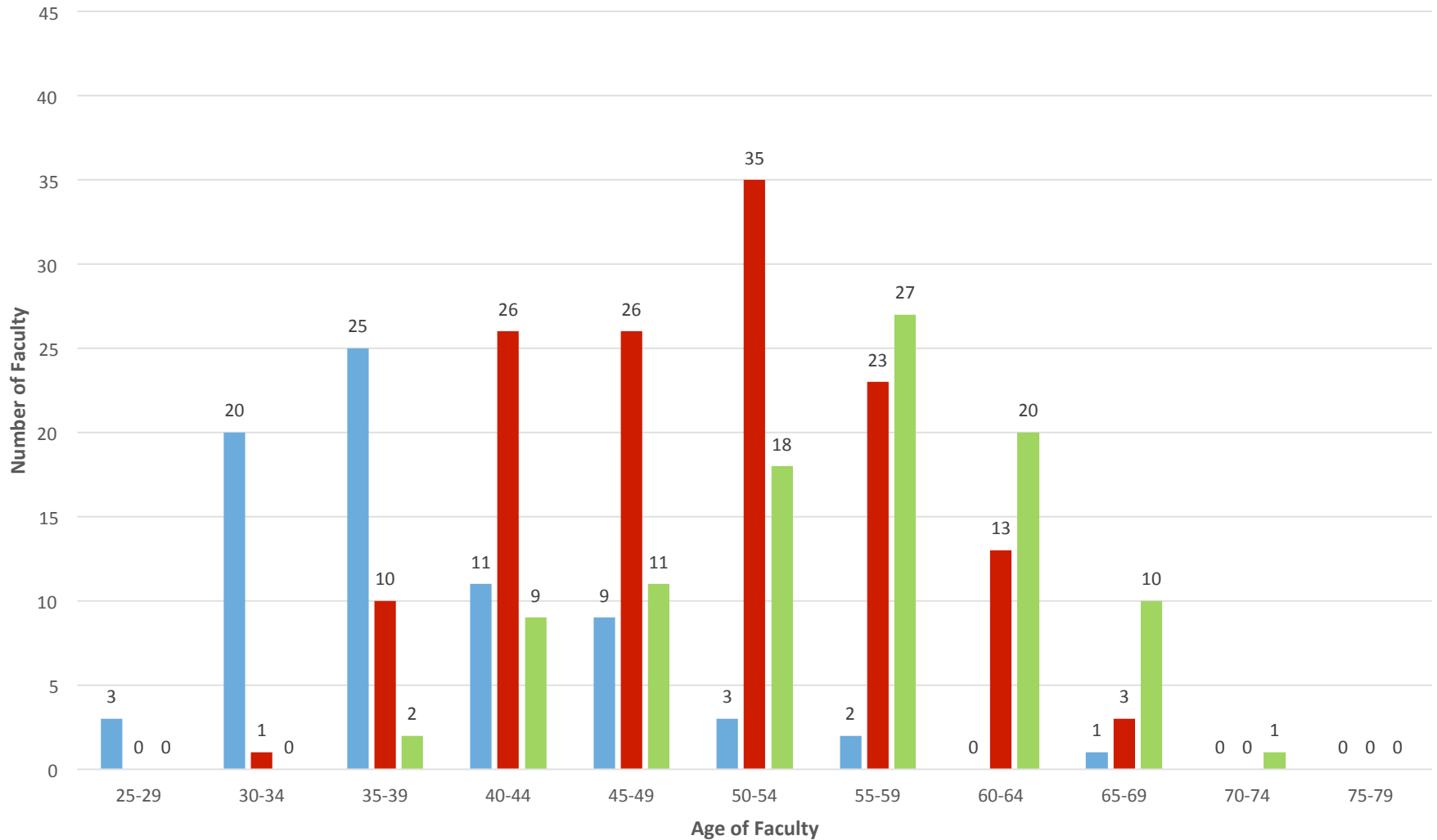
# Fall 2014 Faculty

- New Tenure-Track 23
  - Female Tenure-Track 10(43%)
  
- New Lecturers, Sr. Lecturers  
& Professors of Practice 11
  - Females 4 (36%)

# Full Time Graduates Vs. FTE Undergraduates Michigan Public Universities and Michigan Tech Benchmark Universities Fall 2013



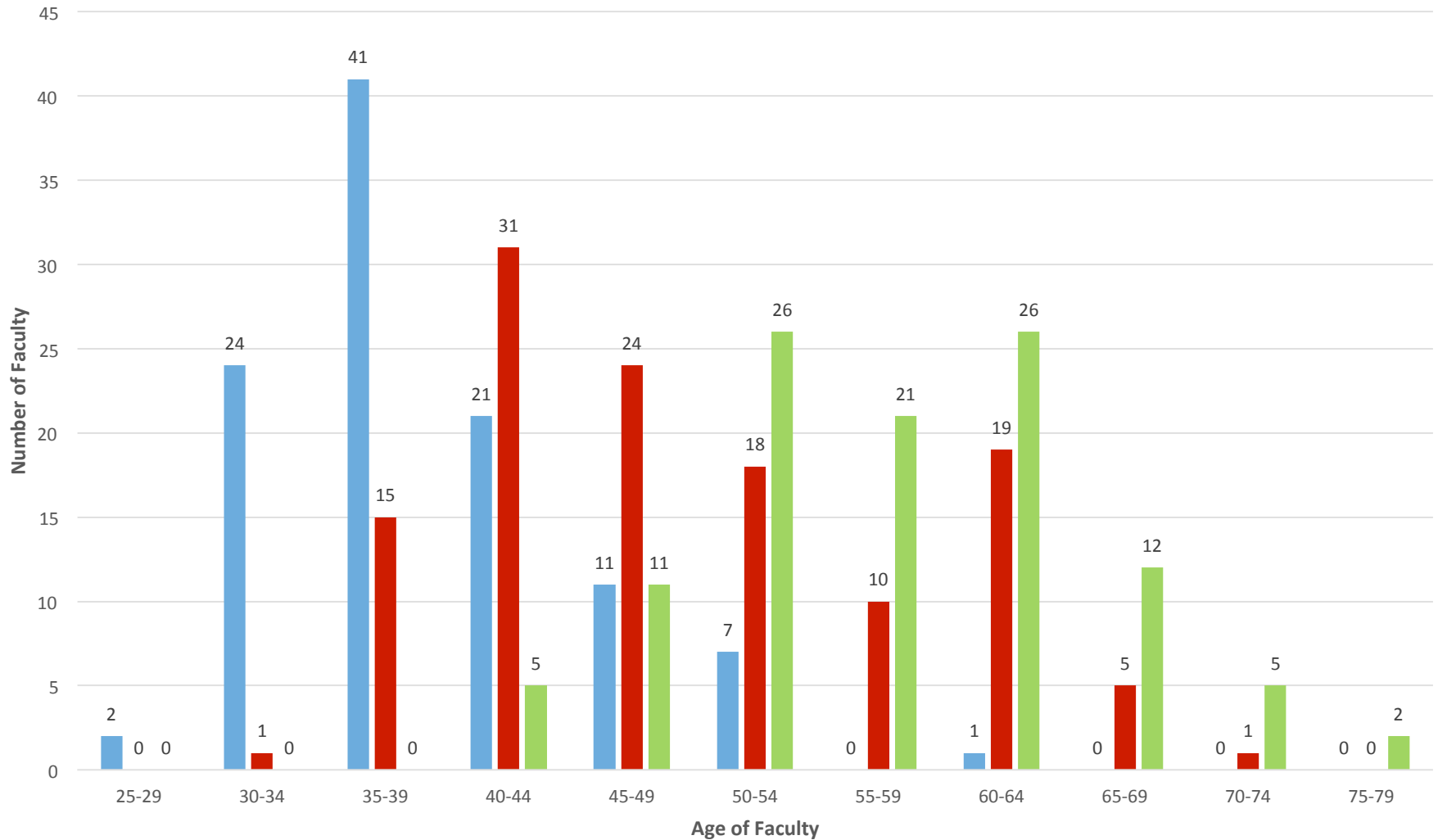
# Michigan Technological University Faculty Headcount by Age and Rank Fall 2004



Note: Faculty includes only full and part-time tenured & tenure-track faculty. Deans, associate/assistant deans, department chairs, and staff are excluded.

■ Assistant Professor ■ Associate Professor ■ Professor

# Michigan Technological University Faculty Headcount by Age and Rank Fall 2014



Note: Faculty includes only full and part-time tenured & tenure-track faculty. Deans, associate/assistant deans, department chairs, and staff are excluded.

■ Assistant Professor ■ Associate Professor ■ Professor



# UAW Certification Program

## Fall 2014

<u>Course</u>	<u>Enrollment</u>
Michigan Tech Specific Course	23
Microsoft Office Suite	24
Social Media	13
Business Communication	11

# Provost Search Committee

**Nancy Barr** – Communication & Sr. Design Program Advisor

**Les Cook** – VP for Student Affairs & Advancement

**Sarah Green** – Professor-Chemistry (**Associate Chair**)

**Ellen Horsch** – VP Administration (**Ex-Officio**)

**Nathan Peterson** – Undergraduate Student

**Audrey Mayer** – Associate Professor-Social Sciences

**Lorelle Meadows** – Dean-Pavlis Honors College

**Michael Mullins** – Professor-Chemical Engineering

**Wayne Pennington** – Dean-College of Engineering (**Chair**)

**David Reed** – VP for Research

**Sasha Teymorian** – Graduate Student

# Strategic Plan

- Approved by Board of Control on April 27, 2012
  - ✓ Major Goals Remain Same
    - Distinctive Education

# 2014-15

# Transdisciplinary Initiatives

## Biomaterials

Ecosystem Dynamics - Extraction & Procurement – Processing & Manufacturing-

Marketing, Sales & Distribution – Post-Consumer Processing & Recycling;  
Natural Capital – Human Capital

H-STEM: Health Science, Technology, Engineering, and Mathematics -

“An integrative force across Michigan Tech, bringing together research and education efforts at the STEM nexus to advance human health”

# 2014-15

# Transdisciplinary Initiatives

Entrepreneurship across the University

Transdisciplinary opportunities for students; MTEESC, Innovation & Industry Engagement

Center for STEM Education Research

\$11 million in K12 related research in 2013-14; \$5million DOW foundation grant

IUSE; NSF/DUE Proposal Writing Workshop

# U.S. News Best Colleges Ranking

(Undergraduate)

- Ranked 116<sup>th</sup> among 268 national universities
- Ranked 56<sup>th</sup> among public national universities
- Engineering ranked 73<sup>rd</sup> in the nation
- Listed as an “A-plus School for B Students”
- Listed as “Best Colleges for Veterans”
  - 28<sup>th</sup> in Nation among 268 National Universities

# Money Magazine

(Undergraduate)

- Ranked 82 among 655 schools
- Others within the State of Michigan;
  - U of M at 22
  - Michigan State at 122

# Payscale

- 13<sup>th</sup> for ROI among state schools nationwide
- \$61,000 typical starting salary





#### RELATED

These are the 10 best college towns in America



FACEBOOK USER MONT RIPLEY

## An on-campus ski resort

**Michigan Technological University – Houghton, Michigan**

Major in Poly Sci, minor in shredding the gnar: MTU actually boasts a real-life ski resort on campus. Sure, it's a *Michigan* ski resort, but it's a ski hill nonetheless. Basically free for students, Mont Ripley (one of the snowiest "mountains" in the country) offers 112 acres of ski terrain, 24 runs, and two chairlifts.

**Michigan Tech**

Create the Future

# Career Fair Statistics

## 2013-2014 Academic Year

(includes 2013 Fall & 2014 Spring Career Fairs)

439 Companies on Campus

696 Interview Schedules

7,127 Available Interview Slots

# 2014 Fall Career Fair

(Week of September 29 – October 3)

340 Companies on Campus

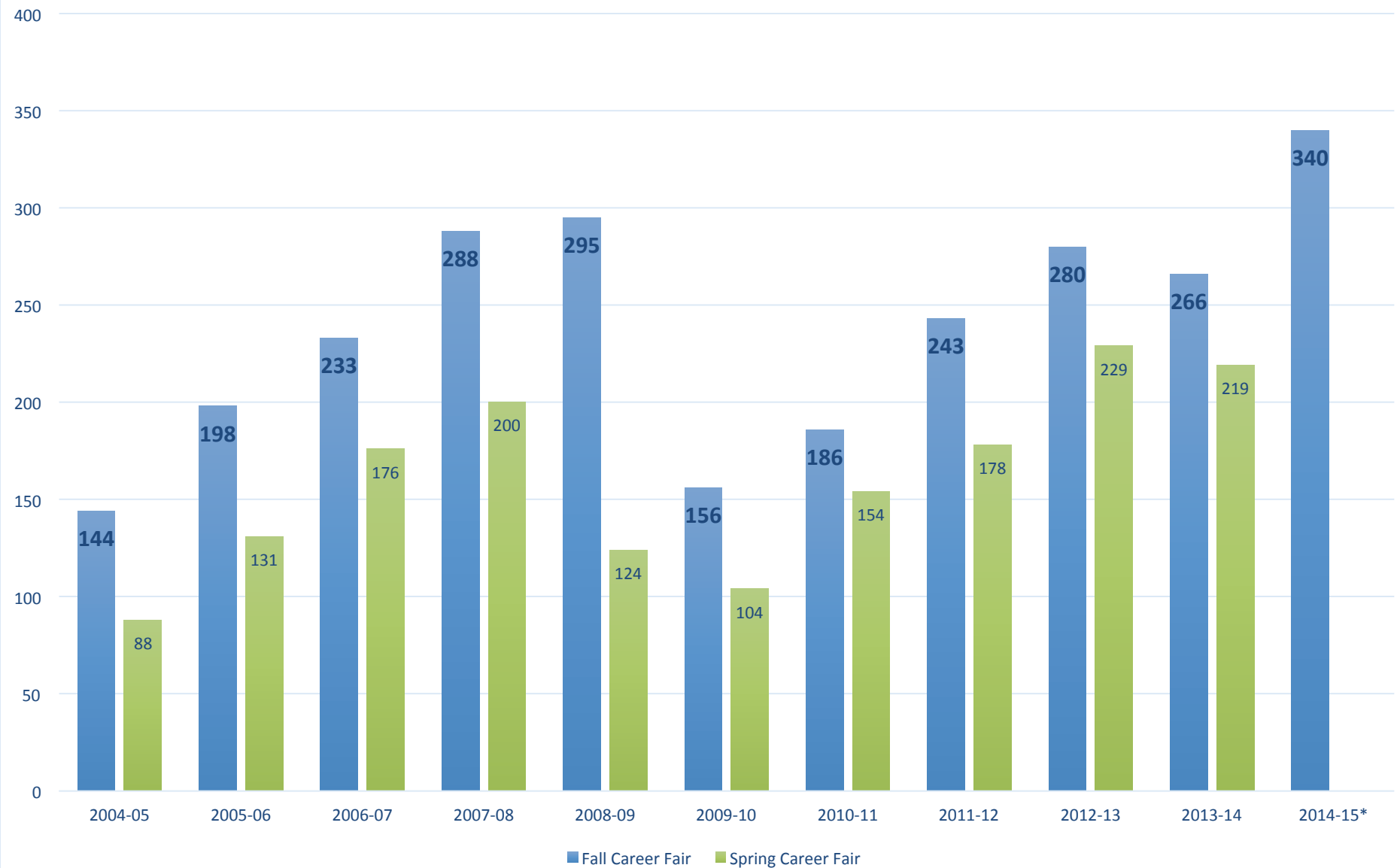
364 Interview Schedules

4,121 Available Interview Slots

# Career Fair Employer Participation

## Academic Years 2004-05 - 2014-15

\*Employer participation count as of 9-14-2014



# Strategic Plan

- Approved by Board of Control on April 27, 2012
  - ✓ Major Goals Remain Same
    - Research/Scholarship/Creativity/Entrepreneurship

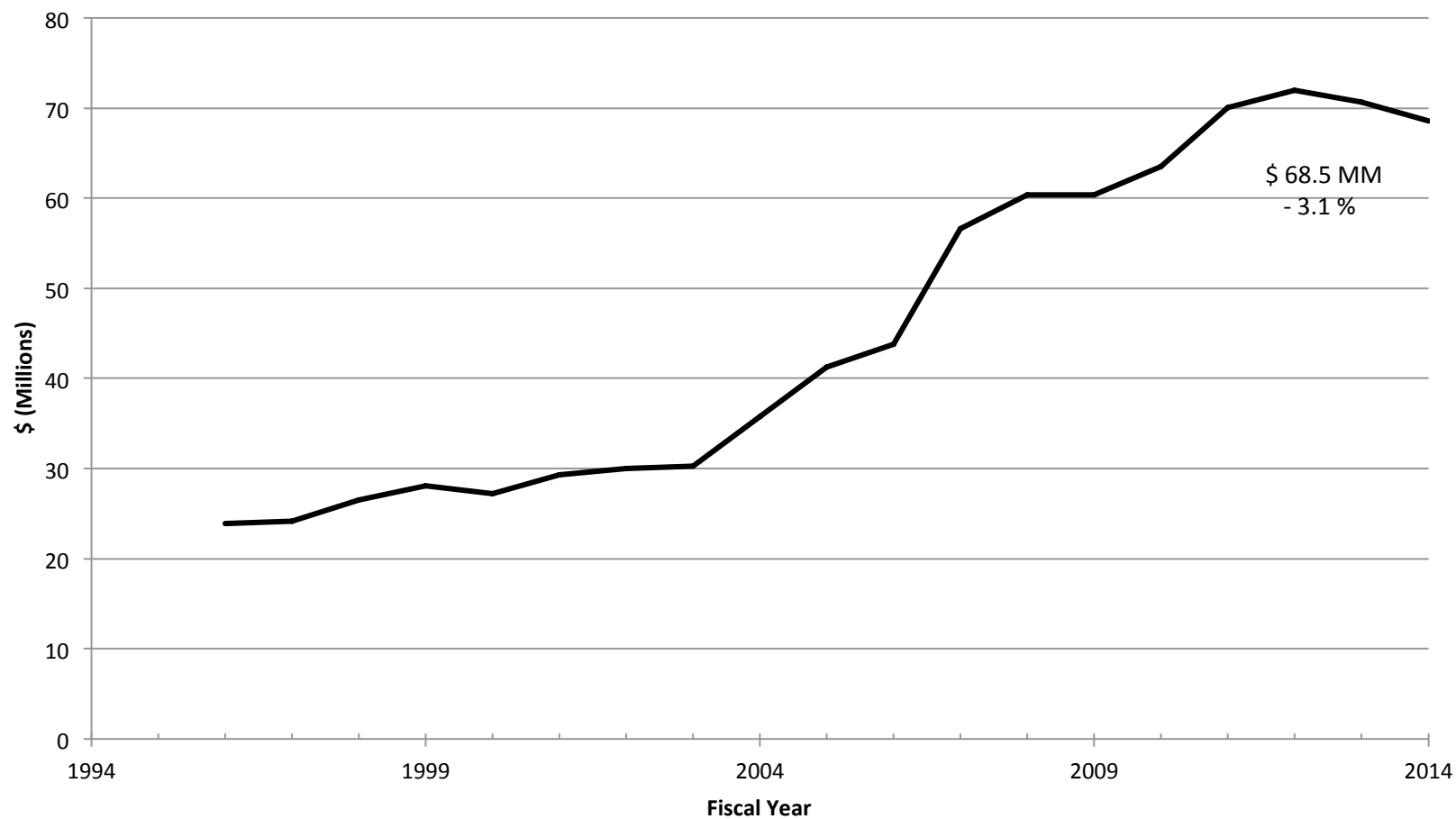
# Research

# Sponsored Awards, FY14

Sponsor Category	FY14	FY13	% +/-
Federal	\$ 31,945,957	\$ 35,144,558	- 9 %
Other Sponsored	\$ 12,900,248	\$ 7,846,484	+ 64 %
Gifts	\$ 3,324,927	\$ 4,993,501	- 33 %
TOTAL	\$ 48,162,964	\$ 48,016,845	+ 0 %

***Michigan Tech***

# Research Expenditures, FY14





# Research Awards, 1<sup>st</sup> Qtr FY15

	<u>FY2014</u>	<u>FY2015</u>	<u>Variance %</u>
Federal	\$11,104,071	\$16,137,516	45.3%
Industrial	1,045,020	2,846,677	172.4%
All Sponsors	13,509,897	20,851,972	54.3%

# Research Expenditures, 1<sup>st</sup> Qtr FY15

	<u>FY2014</u>	<u>FY2015</u>	<u>Variance %</u>
Total	15,530,556	14,411,011	-7.2%

# MTEC SmartZone Update

# MTEC Smart Zone Creating a Satellite in Marquette

Marilyn Clark, CEO

## Innovation Shore - Mission *(draft)*

To build collaborative relationships with industry leaders, capital networks and universities that accelerate technology clusters and entrepreneurship — thus growing product and process innovations that generate jobs and community prosperity and competitiveness.

- Marquette to provide MTEC SmartZone and Michigan Tech start-up companies with mentors and funding
- Marquette start-ups can access researchers, technologies and talent at Michigan Tech
- The development of the U.P. Angel Network – keeping up with other communities
- Extending MTEC SmartZone (Houghton) funding 15 years – 2032
- Develop Regional Clusters – companies in similar industries that synergize business opportunities



ENERGIZING HIGH-TECH BUSINESS GROWTH

# BUDGET

**CASH FLOW**  
**Calendar Years**  
**2013 & 2014 YTD**  
**(dollars in millions)**

Legend: 2013 (black line), 2014 (yellow line)

Y-axis: 0, 5, 10, 15, 20, 25, 30, 35, 40

X-axis: J J J J J J J F F F F F M M M M A A A A A M M M M J J J J J J J J J J A A A A S S S S S O O O O O N N N N N D D D D D

Callout: \$13.4MM (pointing to 2014 line in November)

# Current Fund FY15

**(in thousands)**

	<b><u>Original Projection</u></b>	<b><u>1st Qtr Projection</u></b>
Revenue	\$ 273,076	\$ 266,145
Expense	\$ (272,413)	\$ (265,187)
	<hr/>	<hr/>
Net Income	<b><u>\$ 663</u></b>	<b><u>\$ 958</u></b>
Current Fund Balance	<b><u>\$ 17,784</u></b>	<b><u>\$ 18,079</u></b>

**Note: Current Fund includes General, Designated, Auxiliary, Retirement and Insurance, and Expendable Restricted Funds.**

# Current Fund Balances

(in thousands)

	Balance <u>06/30/13</u>	Balance <u>06/30/14</u>	1st Qtr Projection <u>06/30/15</u>
TOTAL CURRENT FUND BALANCE	\$ 13,195	\$ 17,121	\$ 18,079
LEGALLY RESTRICTED FUNDS	<u>(2,587)</u>	<u>(3,852)</u>	<u>(3,673)</u>
UNRESTRICTED CURRENT FUND BALANCE	<u>\$ 10,608</u>	<u>\$ 13,269</u>	<u>\$ 14,406</u>



# Governmental Accounting Standards Board Ruling 68 (GASB 68)

- In Michigan, all schools, community colleges, and participating universities will now recognize the MPERS liability instead of the State.
- Adds a \$47.7M liability to Michigan Tech's non-current liabilities, reduces net position by same.
- Amount may vary in future years – goes away in 2036.
- No effect on operating funds.
- Currently no change to our bond rating, per the rating agencies.

# Current Fund Balances Including GASB 68 Pension Liability

(in thousands)

	Balance <u>06/30/13</u>	Balance <u>06/30/14</u>	1st Qtr Projection <u>06/30/15</u>
TOTAL CURRENT FUND BALANCE	\$ 13,195	\$ 17,121	\$ (29,691)
LEGALLY RESTRICTED FUNDS	<u>(2,587)</u>	<u>(3,852)</u>	<u>(3,673)</u>
UNRESTRICTED CURRENT FUND BALANCE	<u>\$ 10,608</u>	<u>\$ 13,269</u>	<u>\$ (33,364)</u>

# Balance Sheet

## Condensed Statement of Net Position

### as of September 30, 2014

(in thousands)

	<u>University</u>	<u>Tech Fund</u>	<u>Total</u>
<b>ASSETS</b>			
Current Assets	\$ 37,773	\$ 4,861	\$ 42,634
Noncurrent Assets:			
Capital Assets, net	244,388	-	244,388
Other Noncurrent Assets	37,435	121,965	159,400
<b>TOTAL ASSETS</b>	<u>\$ 319,596</u>	<u>\$ 126,826</u>	<u>\$ 446,422</u>
<b>LIABILITIES</b>			
Current Liabilities	\$ 20,645	\$ 485	\$ 21,130
Noncurrent Liabilities	81,152	5,116	86,268
<b>TOTAL LIABILITIES</b>	<u>\$ 101,797</u>	<u>\$ 5,601</u>	<u>\$ 107,398</u>
<b>NET POSITION</b>			
Investments in capital assets, net of related debt	\$ 167,732	\$ -	\$ 167,732
Other net position, restricted and unrestricted	50,067	121,225	\$ 171,292
<b>TOTAL NET POSITION</b>	<u>\$ 217,799</u>	<u>\$ 121,225</u>	<u>\$ 339,024</u>
<b>TOTAL LIABILITIES AND NET POSITION</b>	<u>\$ 319,596</u>	<u>\$ 126,826</u>	<u>\$ 446,422</u>

**Balance Sheet**  
**Condensed Statement of Net Position**  
**Including GASB 68 Pension Liability**  
**as of September 30, 2014**  
**(in thousands)**

	<u>University</u>	<u>Tech Fund</u>	<u>Total</u>
<b>ASSETS</b>			
Current Assets	\$ 37,773	\$ 4,861	\$ 42,634
Noncurrent Assets:			
Capital Assets, net	244,388	-	244,388
Other Noncurrent Assets	37,435	121,965	159,400
<b>TOTAL ASSETS</b>	<u>\$ 319,596</u>	<u>\$ 126,826</u>	<u>\$ 446,422</u>
<b>LIABILITIES</b>			
Current Liabilities	\$ 20,645	\$ 485	\$ 21,130
Noncurrent Liabilities	128,922	5,116	134,038
<b>TOTAL LIABILITIES</b>	<u>\$ 149,567</u>	<u>\$ 5,601</u>	<u>\$ 155,168</u>
<b>NET POSITION</b>			
Investments in capital assets, net of related debt	\$ 167,732	\$ -	\$ 167,732
Other net position, restricted and unrestricted	2,297	121,225	\$ 123,522
<b>TOTAL NET POSITION</b>	<u>\$ 170,029</u>	<u>\$ 121,225</u>	<u>\$ 291,254</u>
<b>TOTAL LIABILITIES AND NET POSITION</b>	<u>\$ 319,596</u>	<u>\$ 126,826</u>	<u>\$ 446,422</u>

# Advancement

- ❖ 2014 Goal - \$30.8M; Raised \$30.94M
- ❖ 2015 Goal - \$32.5M

**Michigan Technological University**  
**Michigan Tech Fund**  
**Goals Summary Chart**

July 1, 2014 through November 30, 2014  
(in millions)

	<u>FY15 Goal</u>	<u>Actual</u>	<u>% Realized</u>
Major Gifts	\$5.00	\$1.85	37%
Planned gifts	9.75	5.87	60%
Annual Giving	2.25	0.93	41%
Corp Sponsored Research	9.50	4.65	49%
Corporations	3.00	0.73	24%
Foundations & Other	2.50	0.07	3%
Gifts-in-kind	0.50	0.18	36%
<b>Total</b>	<u><u>\$32.50</u></u>	<u><u>\$14.28</u></u>	<u><u>44%</u></u>

- **#GivingTuesday - December 2 – “Pennies for Change”**  
Campus merchants asked customers to “round up” with the proceeds going to support student scholarships at Michigan Tech.

**PENNIES FOR CHANGE:**  
**Round up your purchase**  
**December 2–5**



A few cents might not seem like much, but when everyone pitches in, those pennies on the dollar make a whole lot of sense. Round up your purchases to the nearest dollar at on-campus merchants during the week of #GivingTuesday—Tuesday, December 2, through Friday, December 5—and your change will go toward funding student scholarships. Help change a student's life



**A little pocket change can add up to something BIG**

**Would you like to give more?**  
**Visit [www.mtu.edu/giving](http://www.mtu.edu/giving).**

**#GIVINGTUESDAY** **Michigan Tech**

Michigan Technological University is an equal opportunity educational institution/equal opportunity employer, which includes providing equal opportunity for protected veterans and individuals with disabilities.



# Recent “Culture of Philanthropy” Initiatives on Campus

- National Philanthropy Day – November 15

Students handed out “I am Michigan Tech” wristbands to faculty/staff donors; asked them to wear them all week in support of giving to Tech.

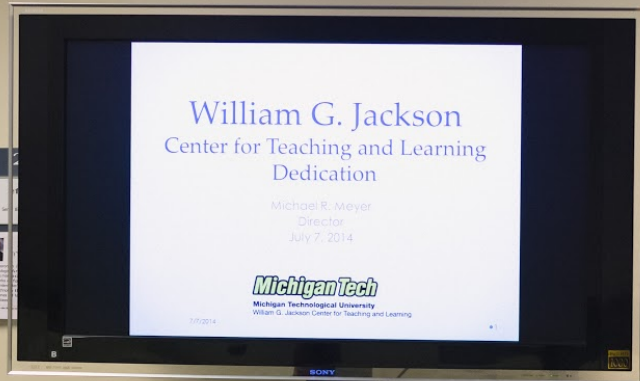


**Michigan Tech**  
Create the Future

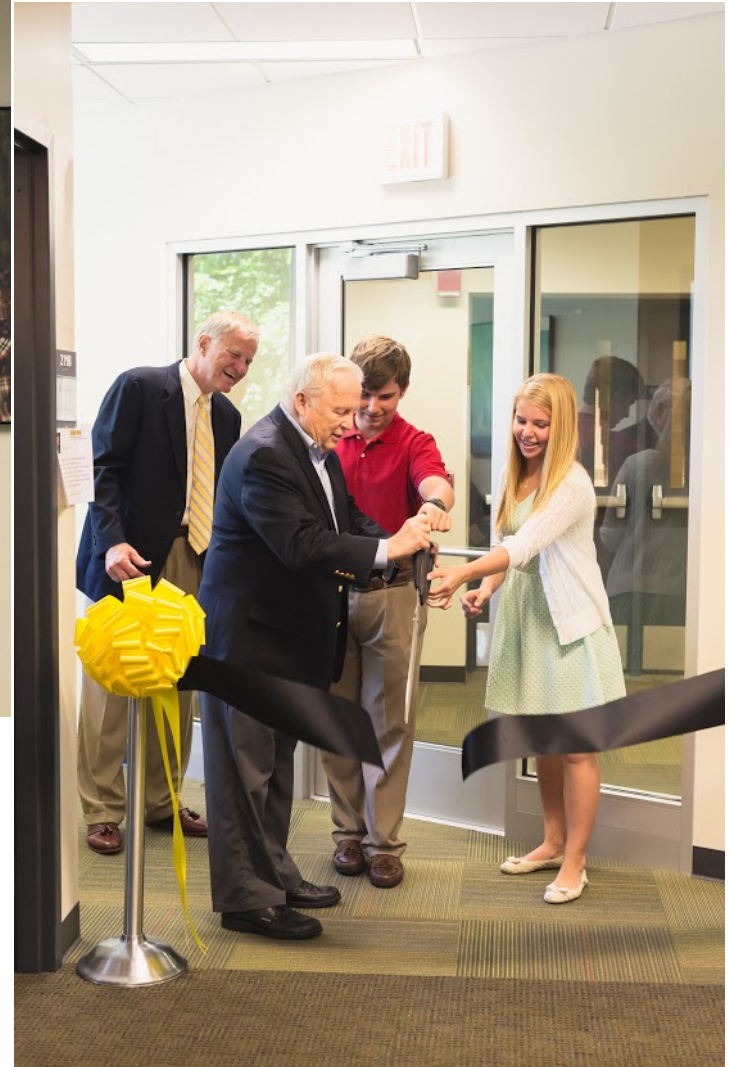




**Physical Therapy Doctoral Program Facilities  
Ribbon Cutting  
August 25, 2014**



**William G. Jackson  
Center for Teaching and Learning Dedication  
July 7, 2014**





# Pavlis Honors College Ribbon Cutting Ceremony

## August 8, 2014







**Phyllis and John Seaman  
Garden Dedication  
September 11, 2014**





# John Edgar McAllister Welcome Center Ribbon Cutting

## September 20, 2014





**Nucor Industrial Control and Automation Lab Ribbon Cutting  
September 29, 2014**



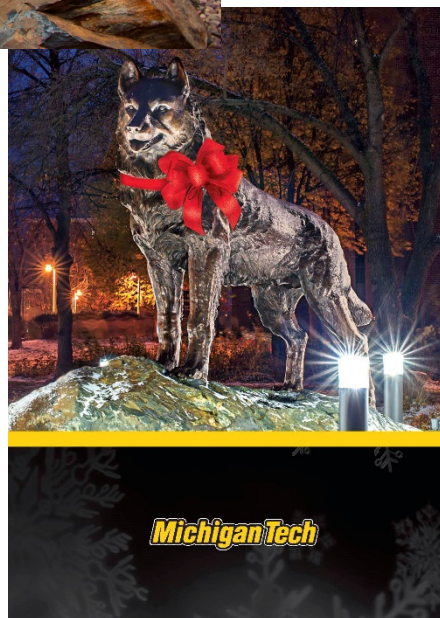


**Career Services Learning Center-DTE Energy Ribbon Cutting  
September 29, 2014**



## Huskies Plaza

Dedicated on October, 13,  
2014







War Memorial Wall Dedication  
November 11, 2014

# War Memorial Wall Donors

Jason & Kathryn Carter  
Leslie Cook & Stefany Valentine-Cook  
Roberta & Edward Dessellier  
James & Carol Frendewey  
John & Lynn Gierke  
Eric & Barbara Halonen  
David W. Hand  
Stephen & Jean-Celeste Kampe  
R. Eugene & Alverda Klippel  
John & Jodi Lehman  
Michigan Tech Alumni Association  
Glenn & Gail Mroz  
William & Mary Ann Predebon  
Brenda Rudiger & Bill Musselman  
Dave & Beth Reed  
Max & Mary Ann Seel  
Bruce & Nancy Seely  
Jon H. Sticklen  
Ronald Strickland & Beatrice Smith  
Dale & Alice Tahtinen  
Dawn & Dale Wiehe

# Transformations to the Information and Learning Commons

- Additional Gift from John and Ruanne Opie
  - Create Collaboration & Teamwork Spaces





# Major Gifts

## House Family Foundation

- Endowed Professor in Computer Science
- Endowed Professor in Statistics, Data Mining and Data Analytics
- Endowed Director for the ACIA Research Center
- Graduate Student Assistantships

## Graduate School Gift

- \$640K gift to support graduates students in electrical engineering

## Herbert H. and Grace A. Dow Foundation

- \$5M to fund the Michigan Science Teaching and Assessment Reform (Mi-STAR) program to develop a model for reforming middle-school STEM education

# Fall Commencement Speaker



**Mr. Dale F. Elliott**  
President/CEO  
FCM Advisory Group Ltd.

**Thanks For All You Do!**

**QUESTIONS**