

CAMPUS FORUM

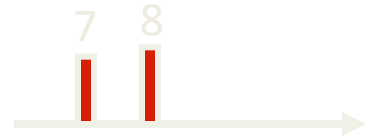
December 11, 2012

Accredited Engineering Programs 1936 – Industrial Era

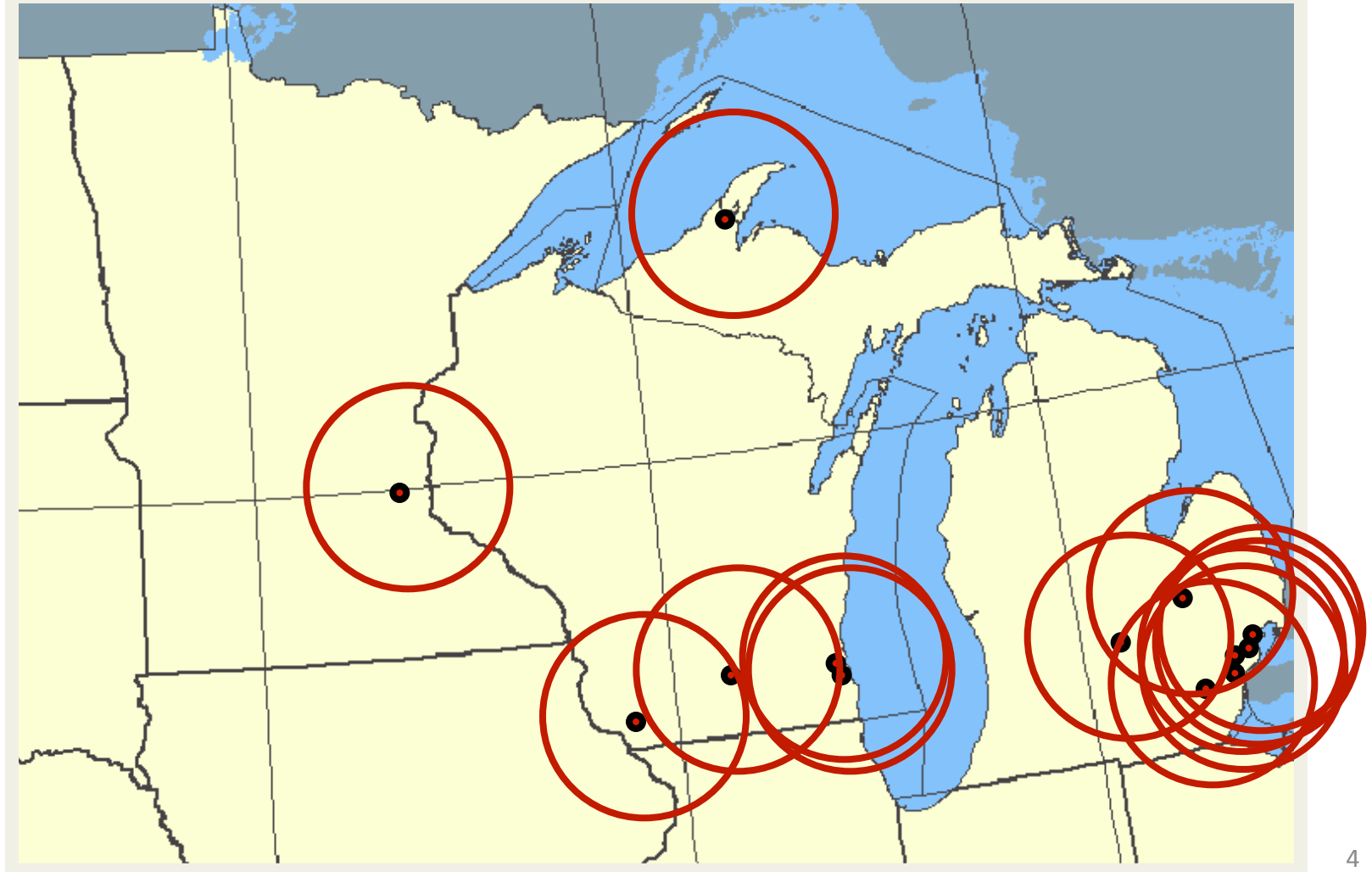
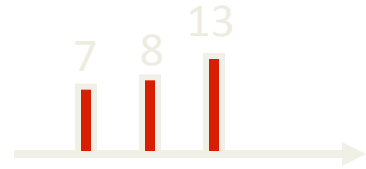
7



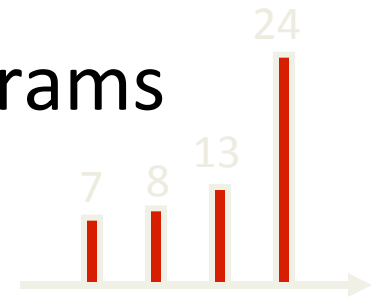
Accredited Engineering Programs 1956 – Post War Era



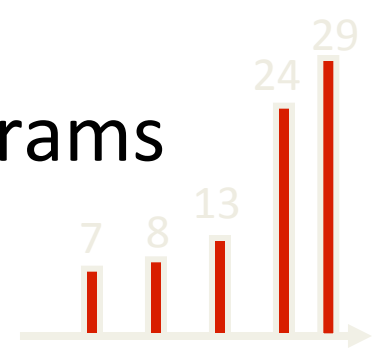
Accredited Engineering Programs 1976 – Post Sputnik Era



Accredited Engineering Programs 1996 – Information Era

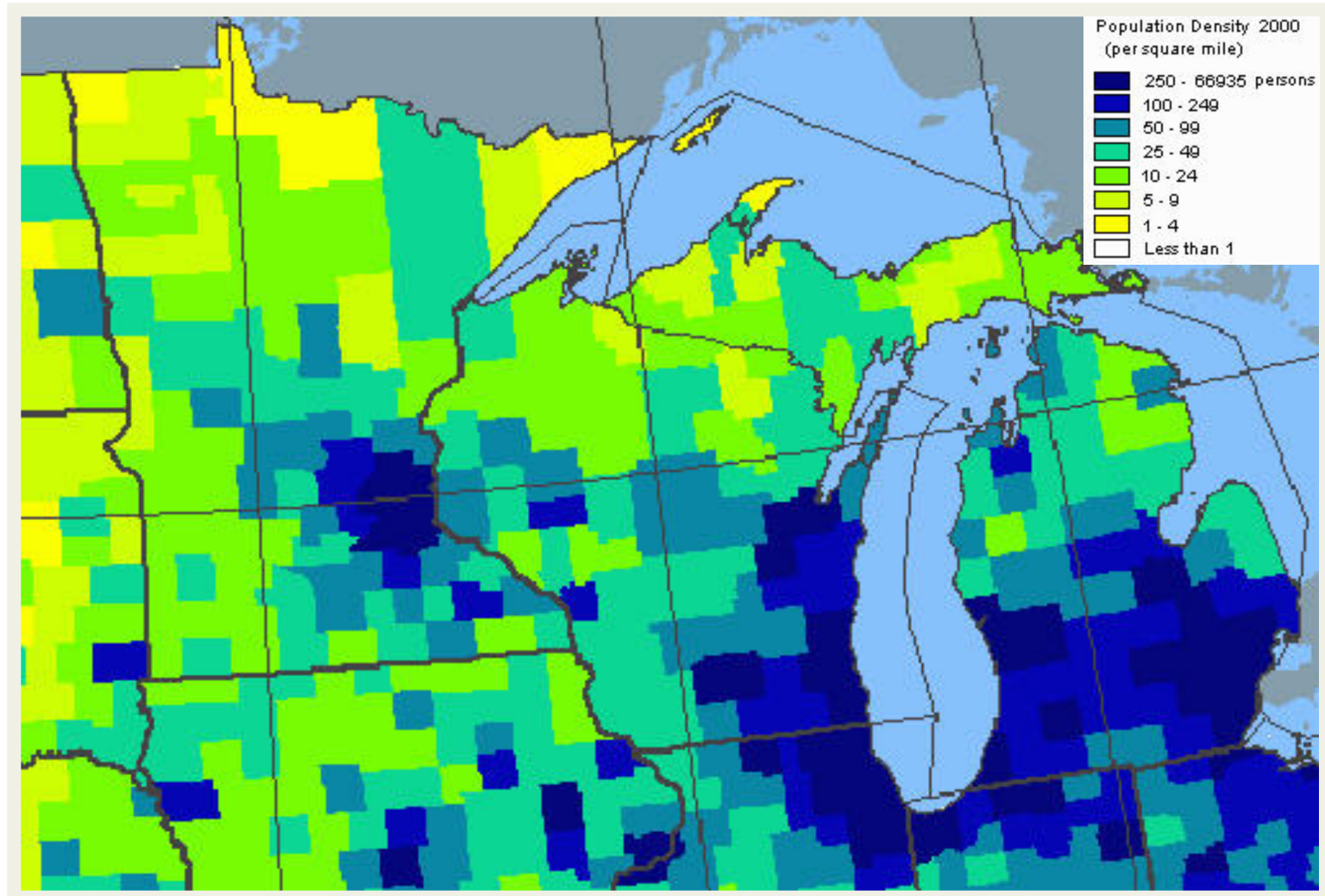


Accredited Engineering Programs 2006 – Today



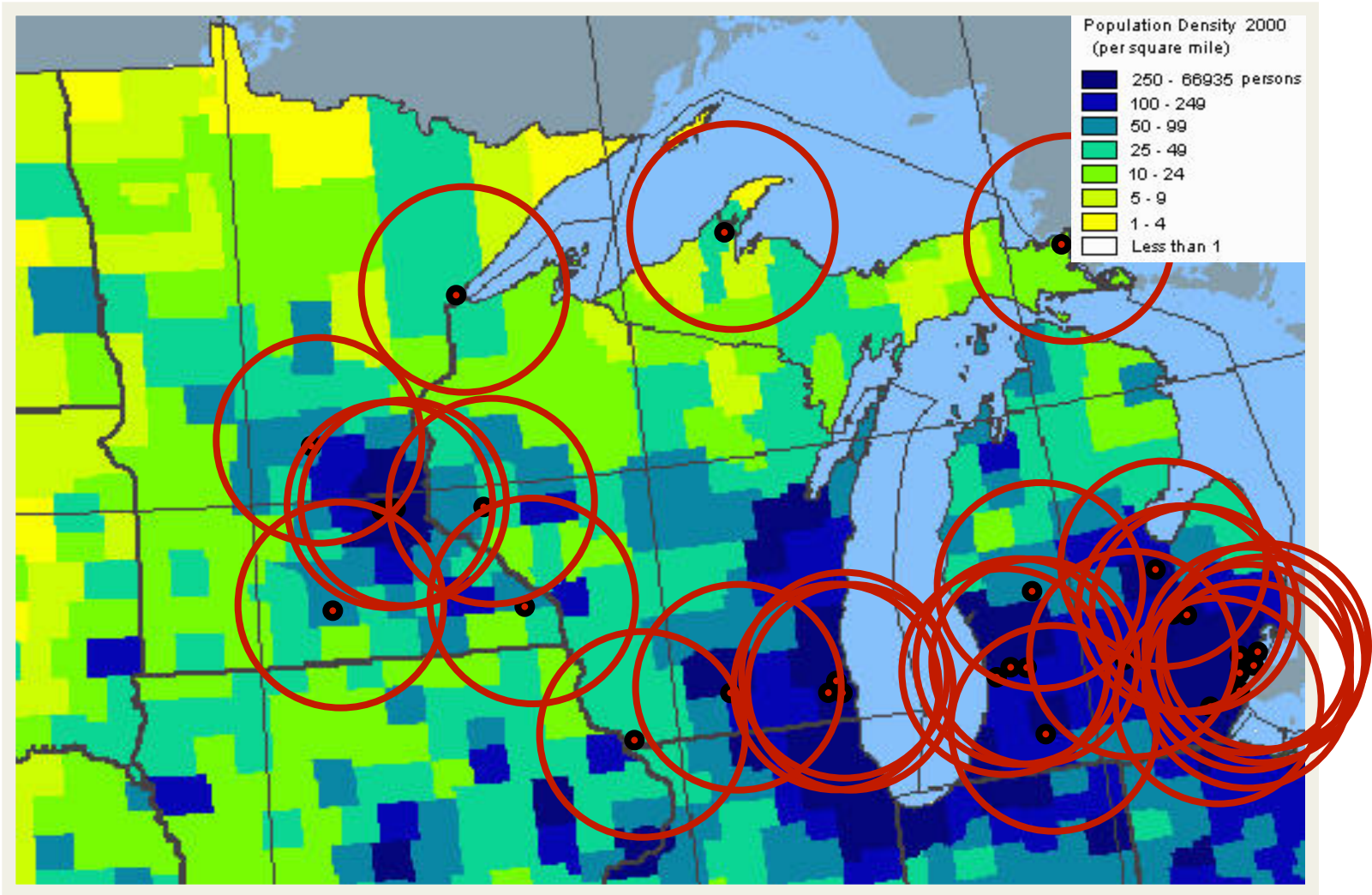
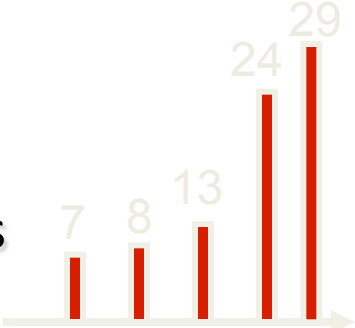
The Market

-Population Density



The Market is Covered

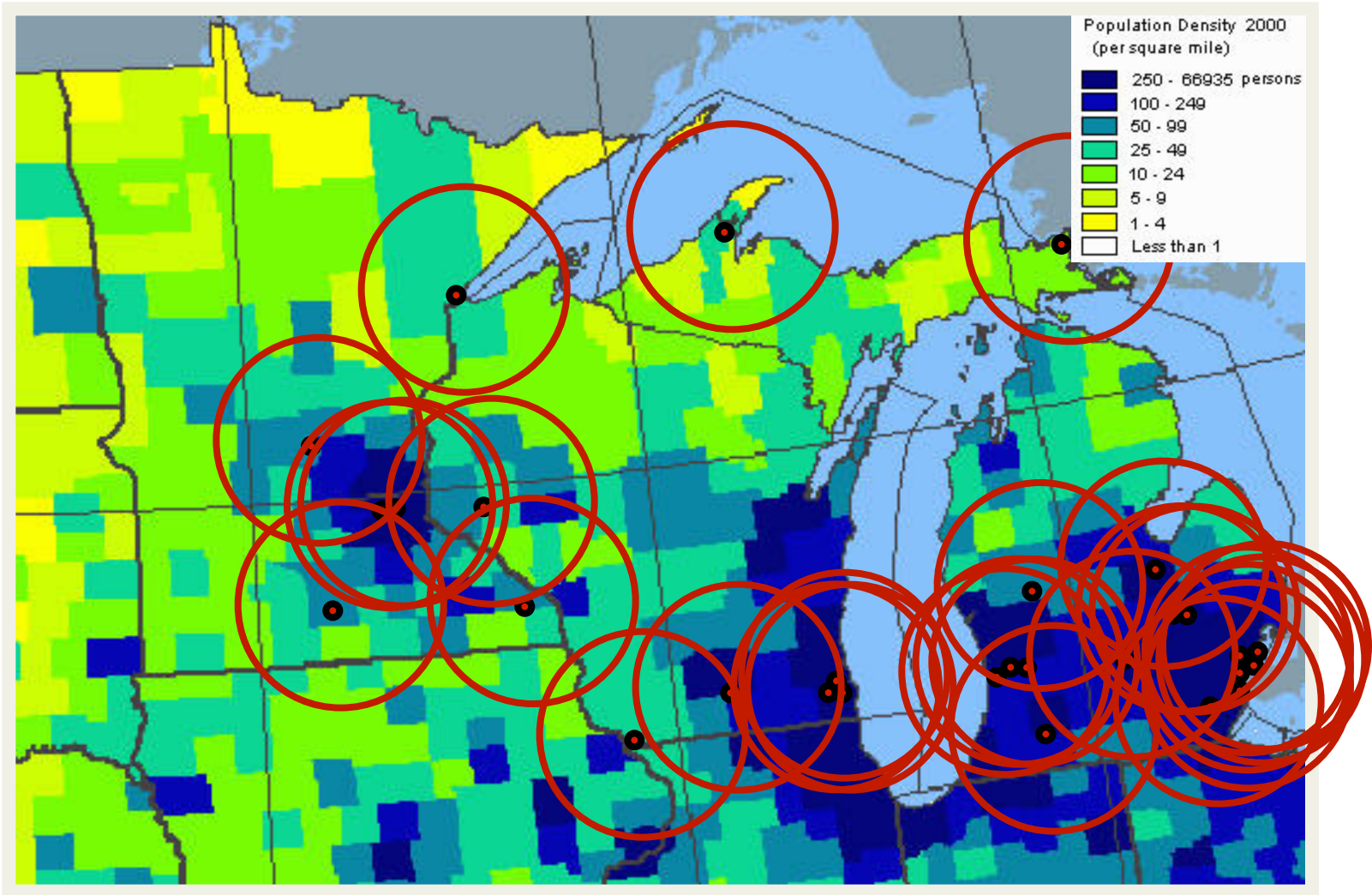
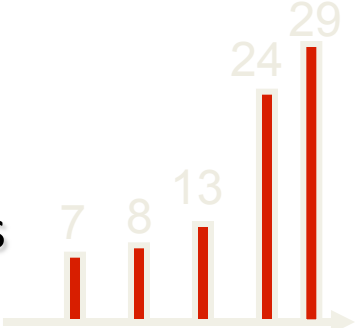
-Accredited Engineering Programs



WHY?

The Market is Covered

-Accredited Engineering Programs



Top Midwest Public Universities

Regional

Truman State University (MO)
University of Northern Iowa
Univ. of Wisconsin–La Crosse
Washburn University (KS)
Univ. of Wisconsin–Eau Claire
University of Michigan–Dearborn
Univ. of Wisconsin–Stevens Point
Eastern Illinois University
University of Minnesota–Duluth
Grand Valley State University (MI)
Univ. of Wisconsin–Platteville
Univ. of Wisconsin–Whitewater
Missouri State Univ.
Univ. of Wisconsin–Green Bay
Univ. of Wisconsin–River Falls
Southern Illinois U.–Edwardsville
University of Wisconsin–Stout
Western Illinois University
Northwest Missouri State Univ.
Southeast Missouri State Univ.
Winona State University (MN)
Univ. of Nebraska–Kearney

National

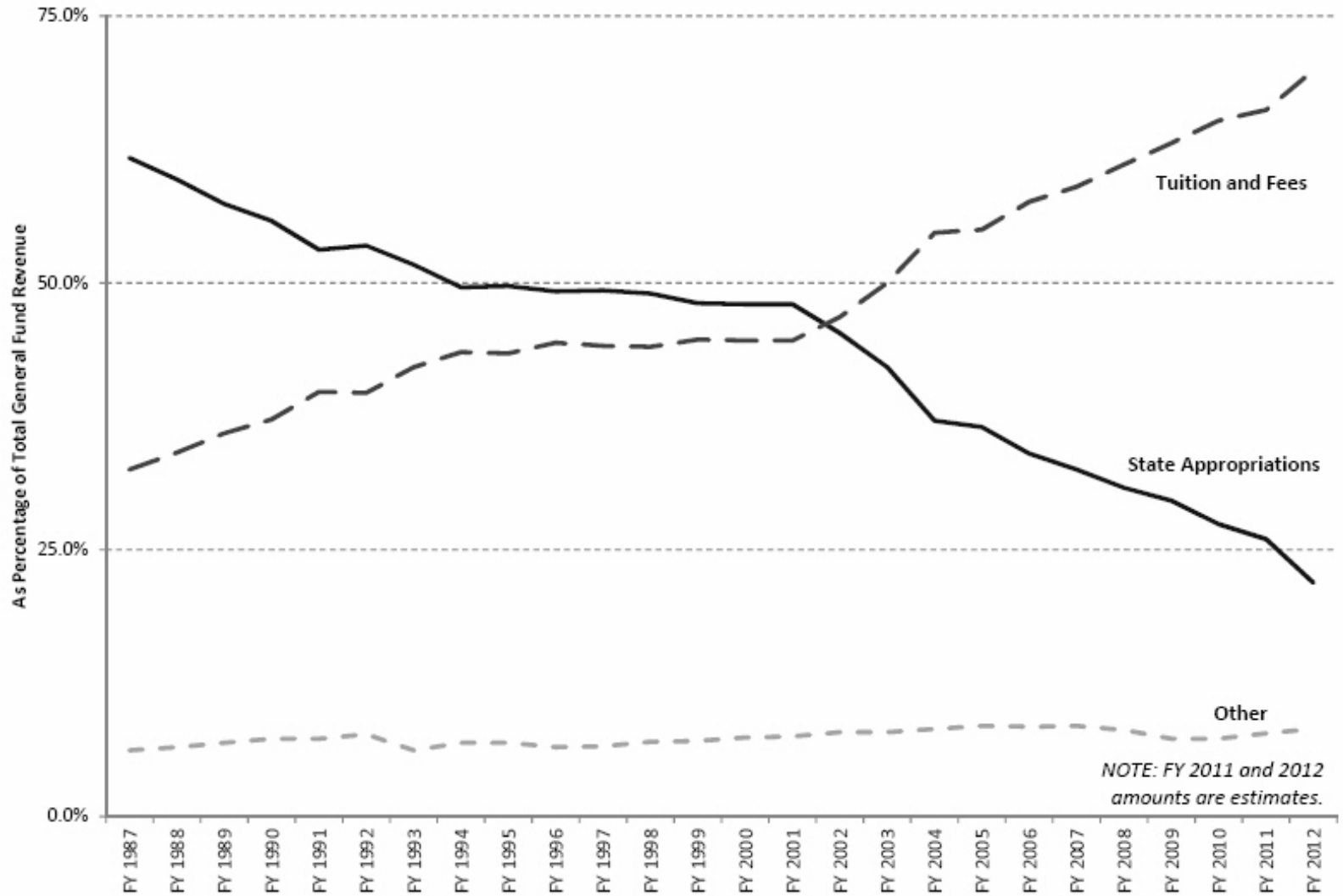
3 University of Michigan–Ann Arbor
8 Univ. of Wisconsin–Madison
11 U. of Illinois–Urbana-Champaign
14 Pennsylvania State U.–University Park
19 University of Pittsburgh
21 Ohio State University–Columbus
21 Purdue Univ.–West Lafayette (IN)
21 University of Iowa
26 Miami University–Oxford (OH)
30 Indiana University–Bloomington
30 Michigan State University
30 Univ. of Minnesota–Twin Cities
38 Iowa State University
45 University of Kansas
45 Univ. of Nebraska–Lincoln
52 Ohio University
52 University of Missouri–Rolla

Which list do we want to be on?

2006 - More Need For Graduate Degrees

- Technology has gotten more complex
 - Look at your car engine, your computer
- Need for more graduate degrees
 - 33% in USA
 - 18% at Michigan Tech

ATTACHMENT 5 University General Fund Revenue History



Revenue Trends FY94 - FY12

Current Fund

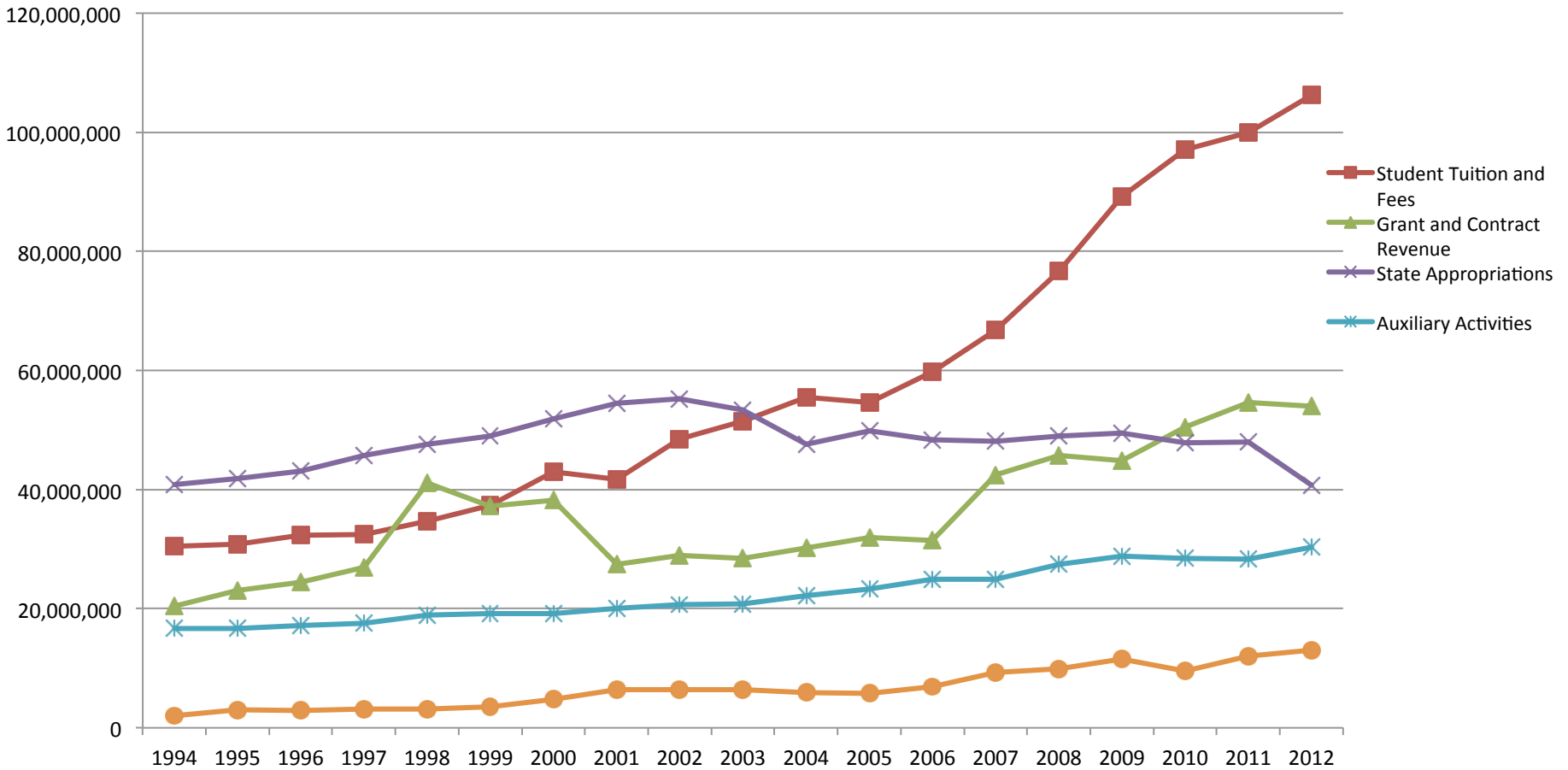
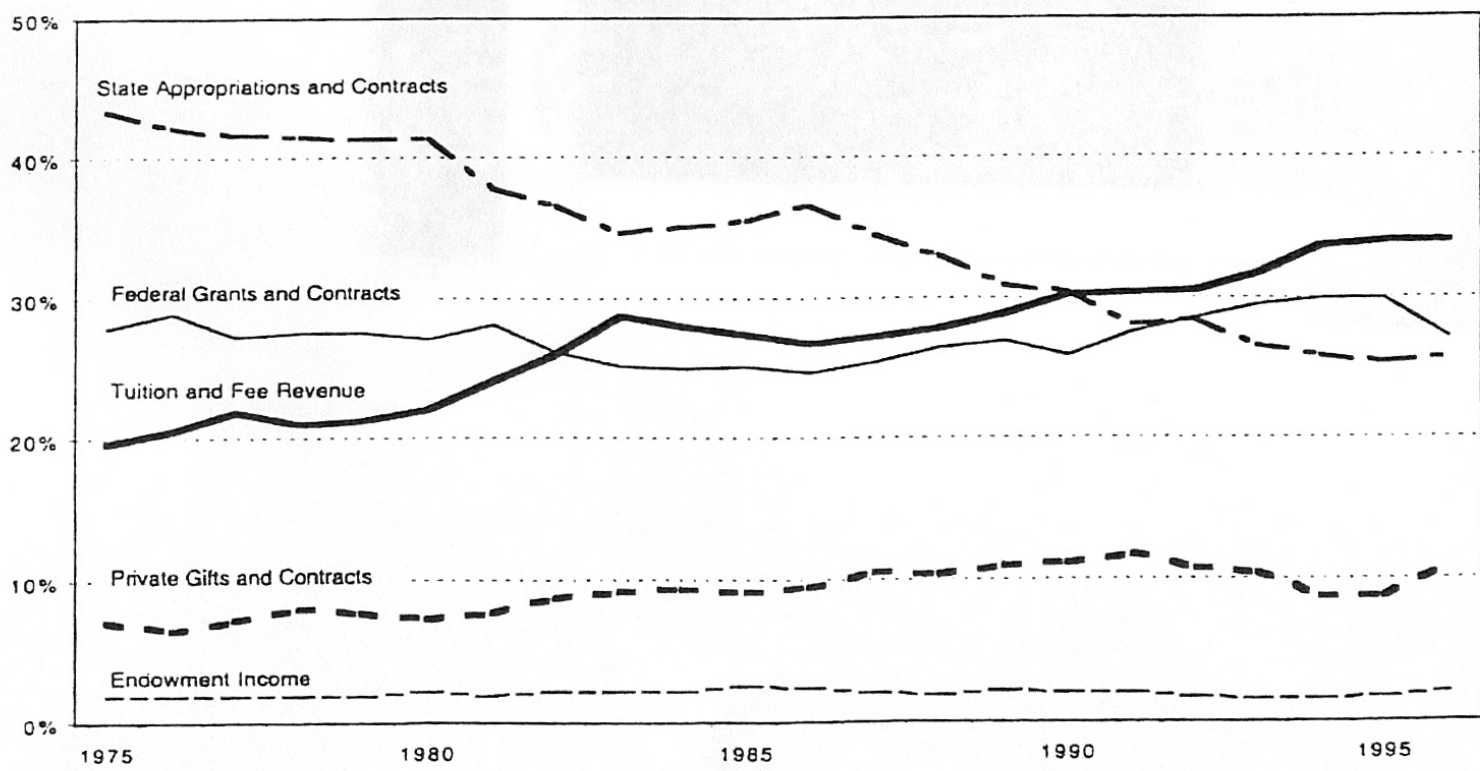


Figure 3
University of Michigan: Relative Changes in Share of Core Revenues, 1975 to 1996



Source: *Digest of Education Statistics*, Office of Educational Research and Improvement, U.S. Department of Education, various years.

2006 - The Future of Michigan Tech

-Turning the Strategic Plan into Action

- ✓ 1. We Must Change
Top National University
2. How We Change
3. What We Must Do

Strategic Plan

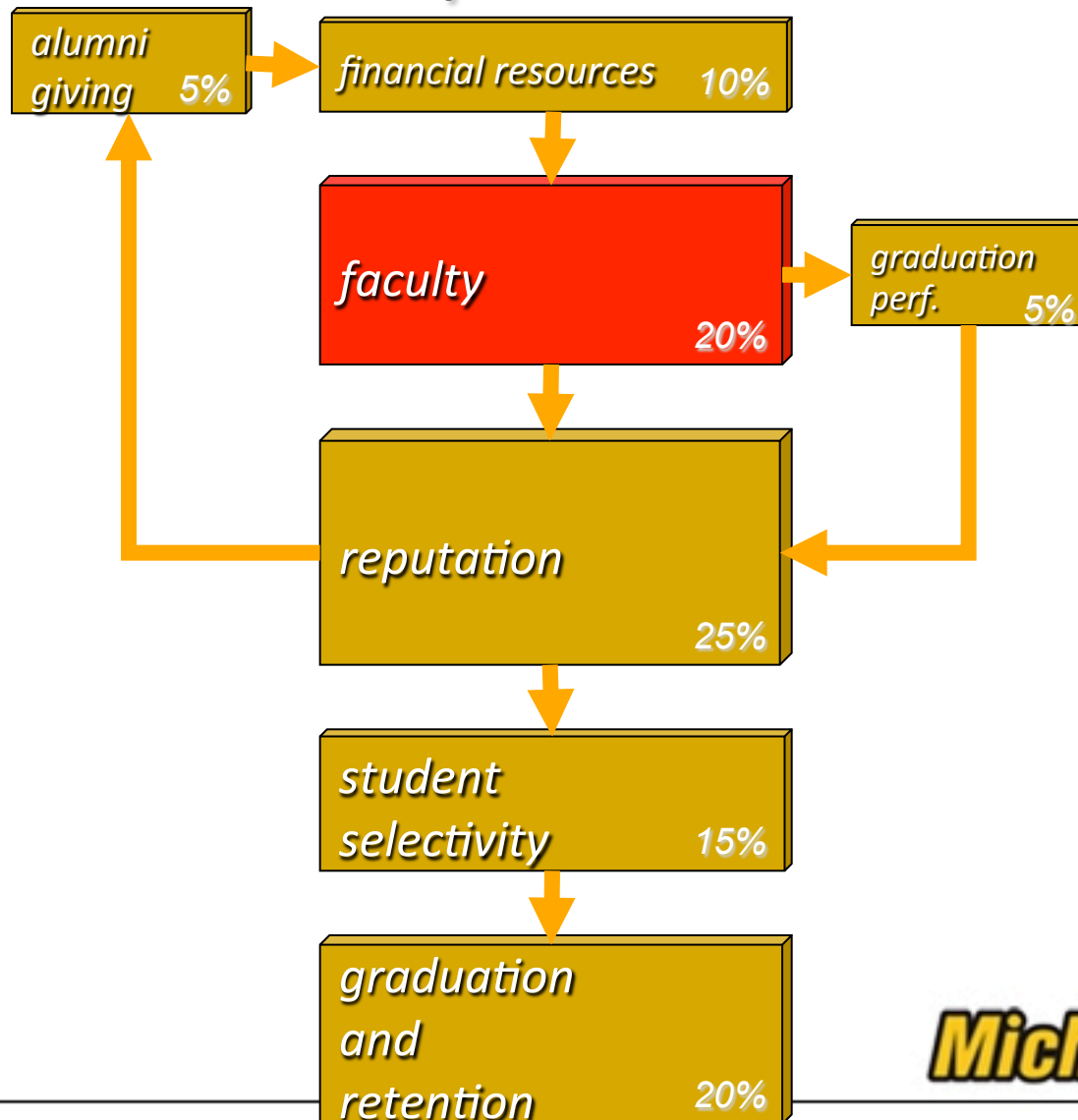
- Approved by Board of Control on April 27, 2012
 - ✓ Major Goals Remain Same
 - People
 - Distinctive Education
 - Research/Scholarship/Creativity/Entrepreneurship
- <http://www.mtu.edu/stratplan/>

Faculty Drives Reputation

-Reputation attracts the best students

- Faculty drives reputation
 - Conferences / papers / citations
 - Research programs
 - Graduate programs

Driving factors in the US News rating system



2006 - We Must Recruit Top Research Oriented Faculty

- The Good News
 - Half our faculty will turn over in the next seven years
- The Bad News
 - We don't have a program to replace them with research oriented faculty
- What does it take?
 - Professorships and Chairs
 - Restructuring and prioritization of compensation and hiring policy
 - Start-up funds
 - SFHI

The Future of Michigan Tech

-Turning the Strategic Plan into Action

- ✓ 1. We Must Change
Top National University
- ✓ 2. How We Change
Attract Research Faculty
3. What We Must Do

2006 - What We Must Do

-in the next 7 years

- Alumni
 - Chairs and Professorships
 - Planned giving
- Michigan Tech Fund
 - Capital Campaign aimed at change
 - Sell the vision
 - Fund graduate research faculty
- Administration
 - Budget for change, direct funds to research faculty
 - Research oriented Provost, Deans, and Chairs
 - Review and manage the change
- Board of Control
 - Hold administration accountable for the change
 - Develop the indicators for change
 - regular reviews – every meeting

Michigan Technological University
Tenured/Tenure Track Faculty by Gender
2006-07 through 2011-12

	<u>2006-07</u>	<u>2007-08</u>	<u>2008-09</u>	<u>2009-10</u>	<u>2010-11</u>	<u>2011-12</u>
Male	235	239	241	244	253	261
Female	65	71	71	85	89	93
Total	300	310	312	329	342	354
Percent Female	21.7	22.9	22.8	25.8	26.0	26.3

Note: Figures include all tenured and tenure track instructional and research faculty. Also includes those faculty on sabbatical or on unpaid leave of absence. Deans, associate deans, department chairs, executives and professional staff with tenure are excluded.

SFHI

	Faculty #	Start Date
Sustainability	6	Aug 2008
Computational Discovery/Innov.	6	Aug 2009
Health & Energy	7	Aug 2010
	4	Aug 2011
	2	Aug 2012
Water & Transportation	<u>7</u>	Aug 2012
		32

expect 3 to 4 more in Water & Transp.

SFHI

As of Dec 2012:

18 faculty submitted a total of 229 grants

16 faculty were awarded **60 proposals** for a total of **\$6.2 million of external research funding**

In addition to research, they contribute significantly to teaching and the growth in graduate student education

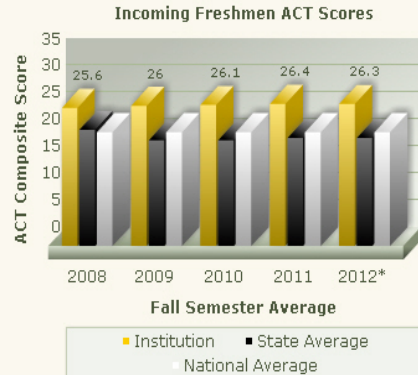
Dashboard Metrics

Incoming Freshmen ACT Scores

Projected 2012 2013 2014 2015 2016 2017

ACT Composite	26.4*	26.6	26.8	27.0	27.1	27.1
---------------	-------	------	------	------	------	------

	Fall 2008	Fall 2009	Fall 2010	Fall 2011	Fall 2012
ACT Composite	25.6	26	26.1	26.4	26.3*
ACT Math	26.5	26.9	27.3	27.2	27.2*
ACT English	24.4	24.8	25.1	25.5	25.3*

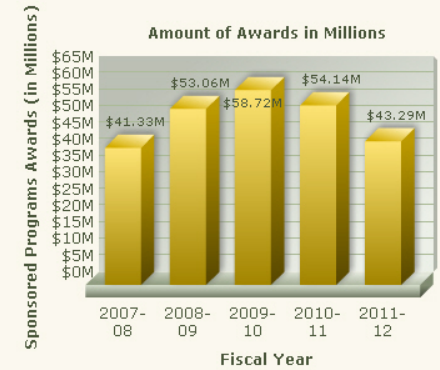


Sponsored Programs Awards

Projected 2013 2014 2015 2016 2017

Sponsored Awards (In Millions)	46.0	48.8	51.7	53.8	56.0
--------------------------------	------	------	------	------	------

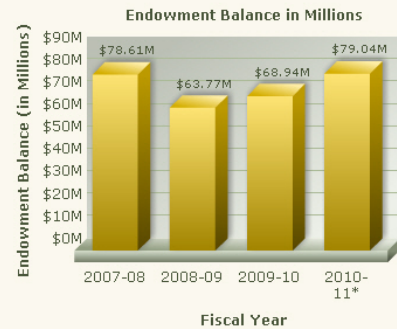
[Detail by College/School and Department](#)



Endowment Value

Projected 2012 2013 2014 2015 2016 2017

Endowment (In Millions)	89.3	100	105	110	120	120
-------------------------	------	-----	-----	-----	-----	-----

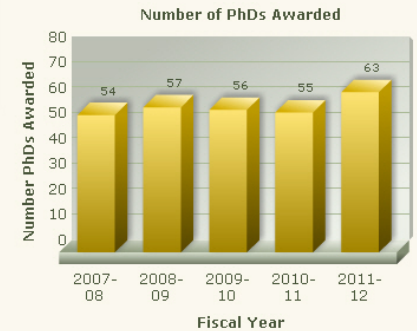


Number of PhDs Awarded

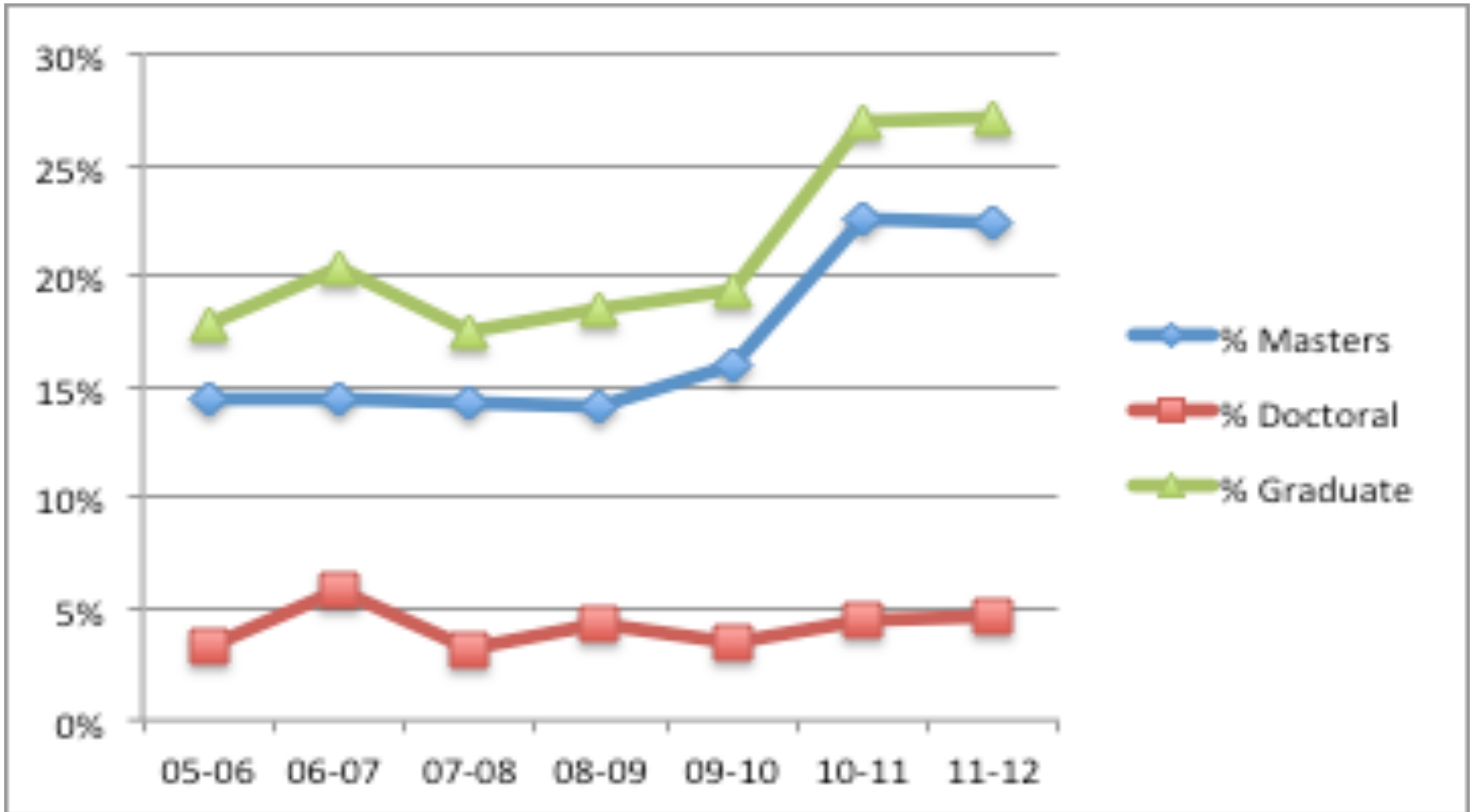
Projected 2012 2013 2014 2015 2016 2017

PhDs Awarded	64	66	68	70	72	74
--------------	----	----	----	----	----	----

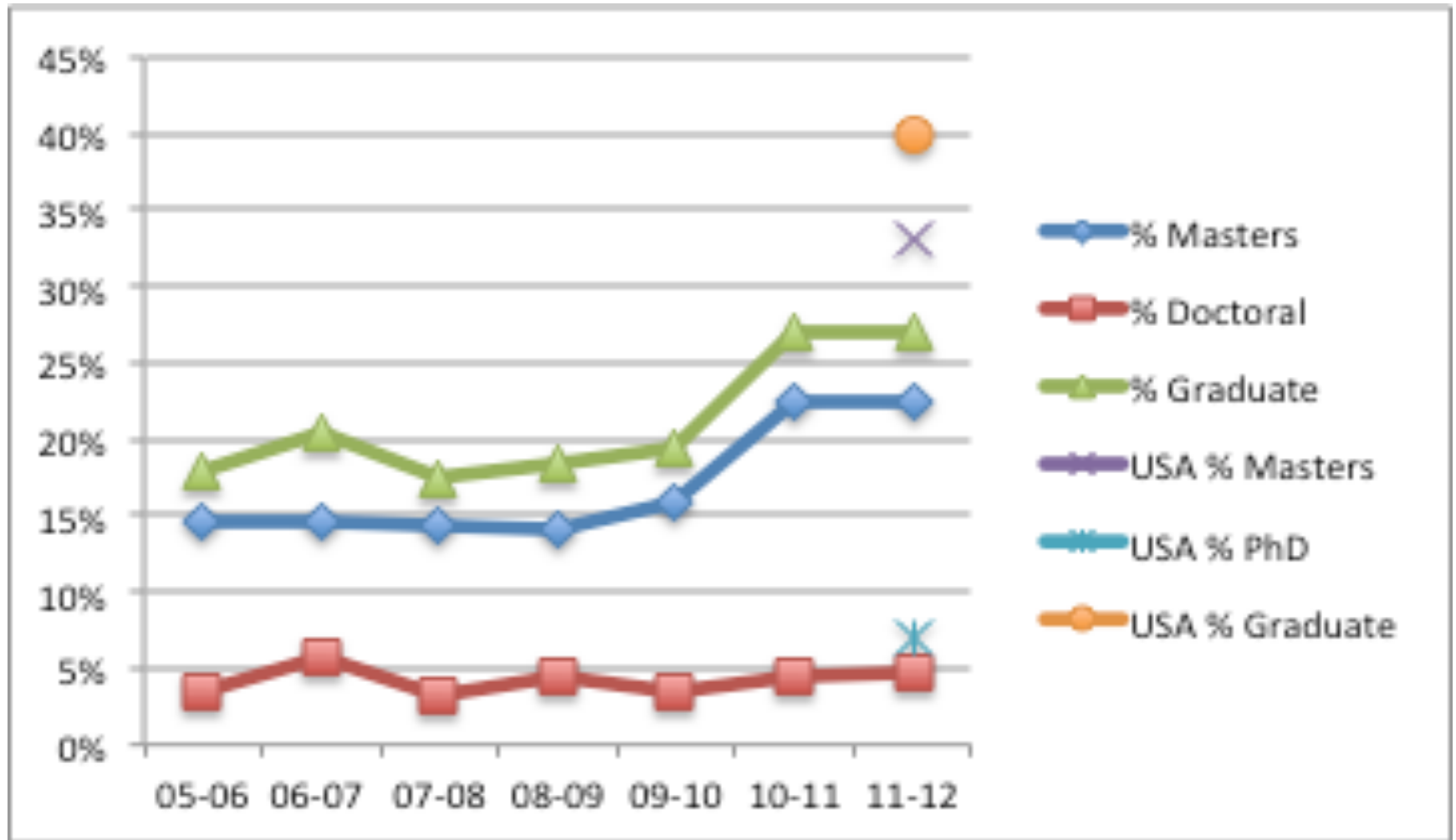
[Detail by College/School and Department](#)



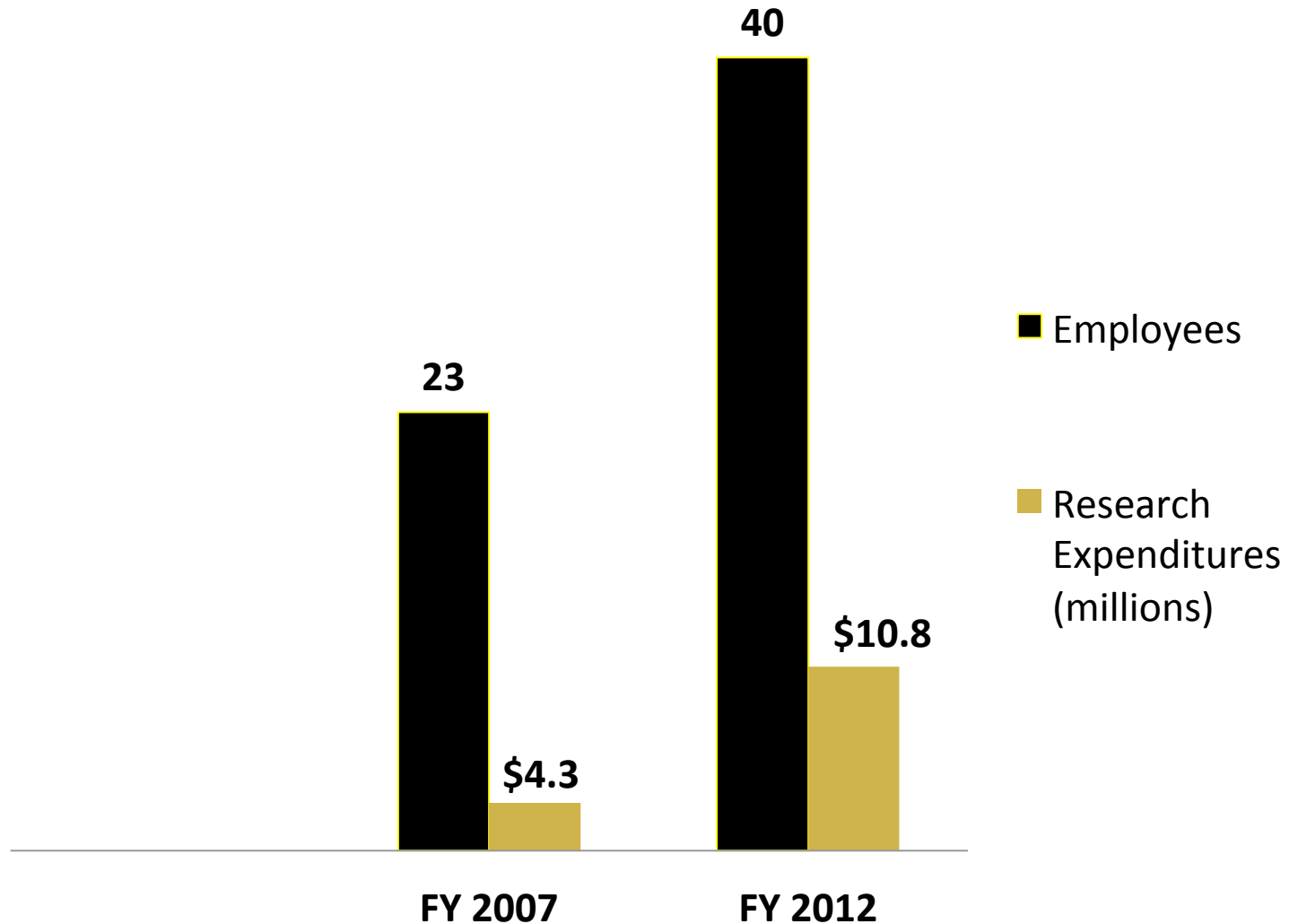
Michigan Tech Graduate Degrees



Michigan Tech Graduate Degrees



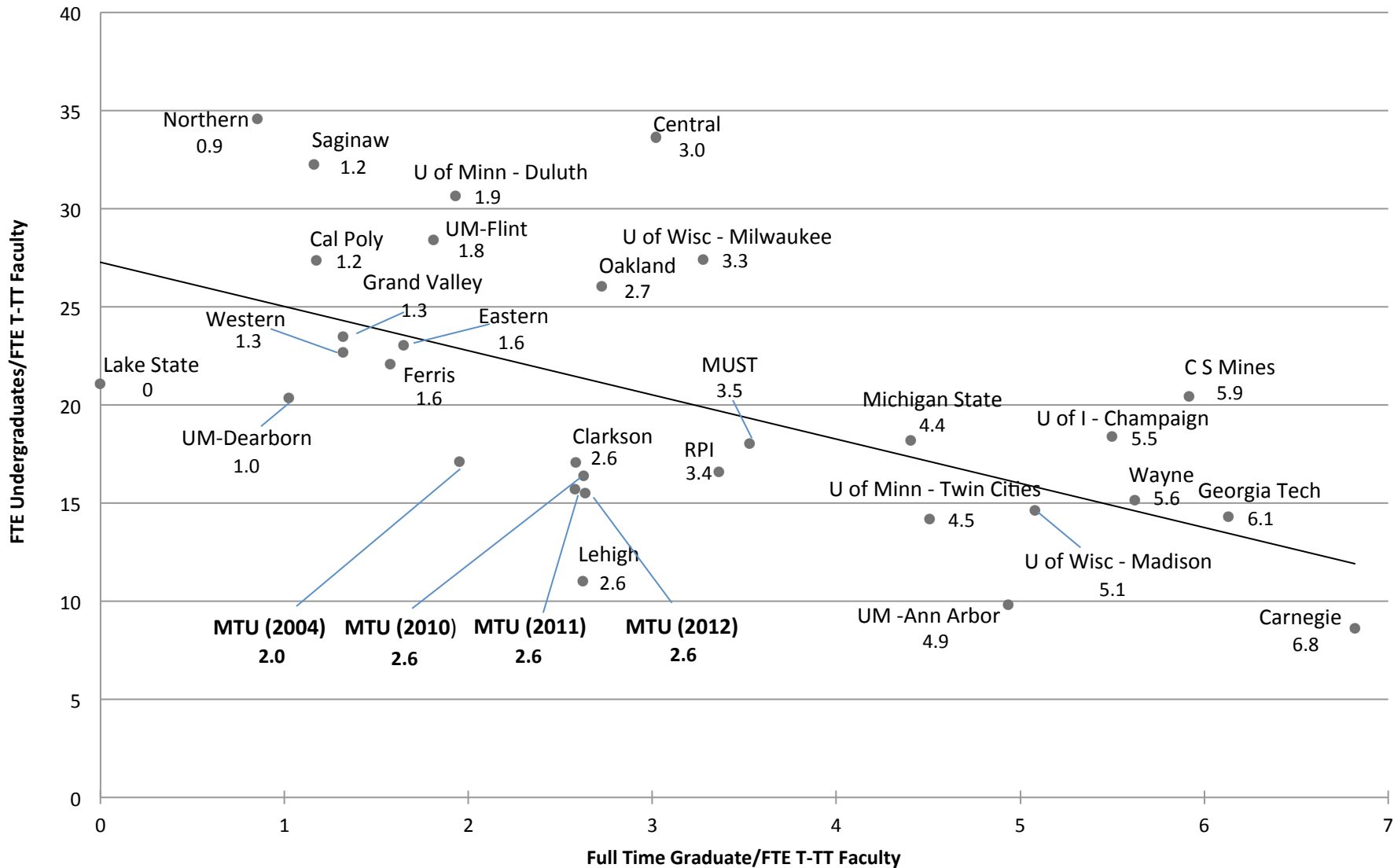
Michigan Tech Research Institute



Full Time Graduates Vs. FTE Undergraduates

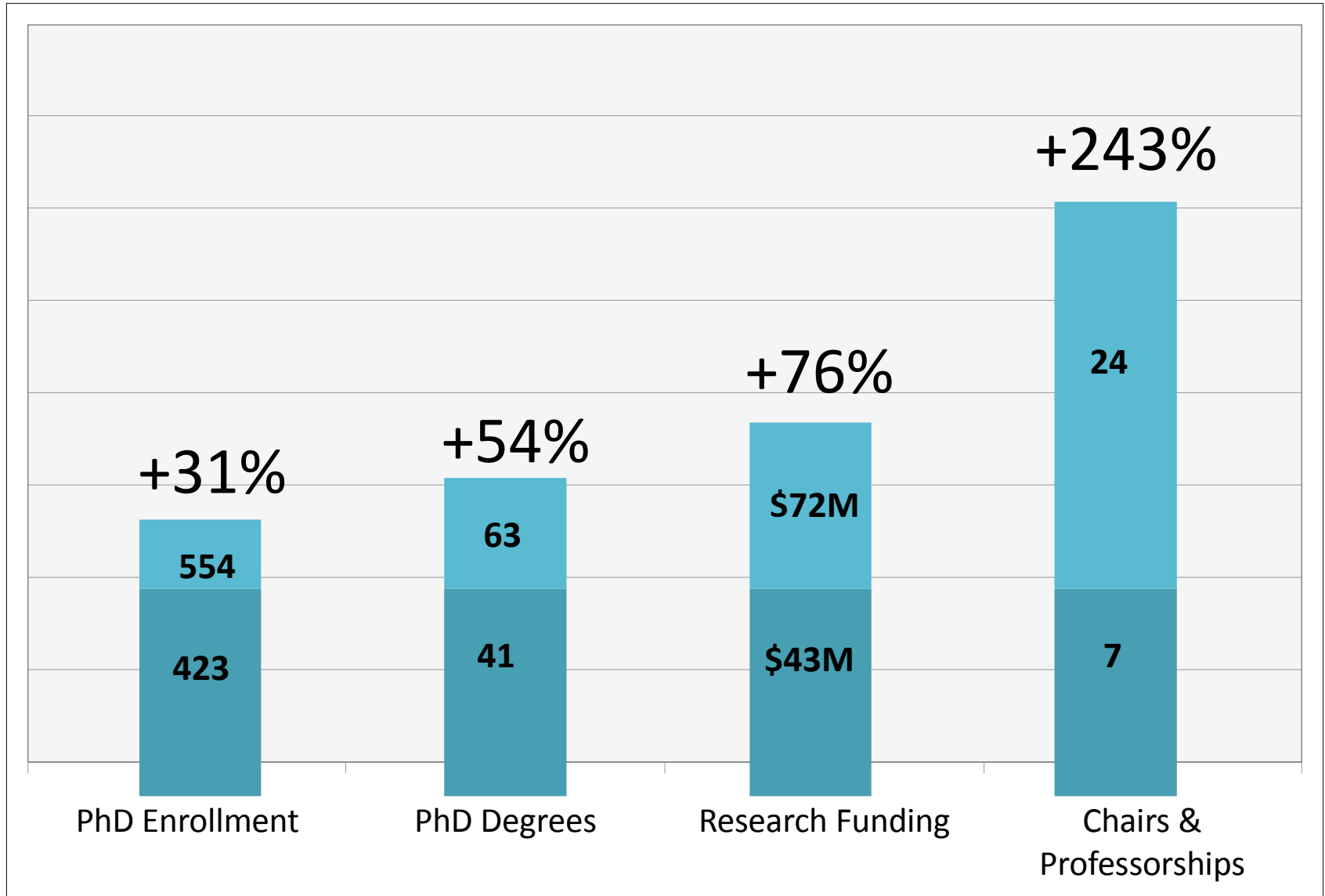
Michigan Public Universities and Michigan Tech Benchmark Universities

Fall 2011



Progress Toward Goals

2006-2012



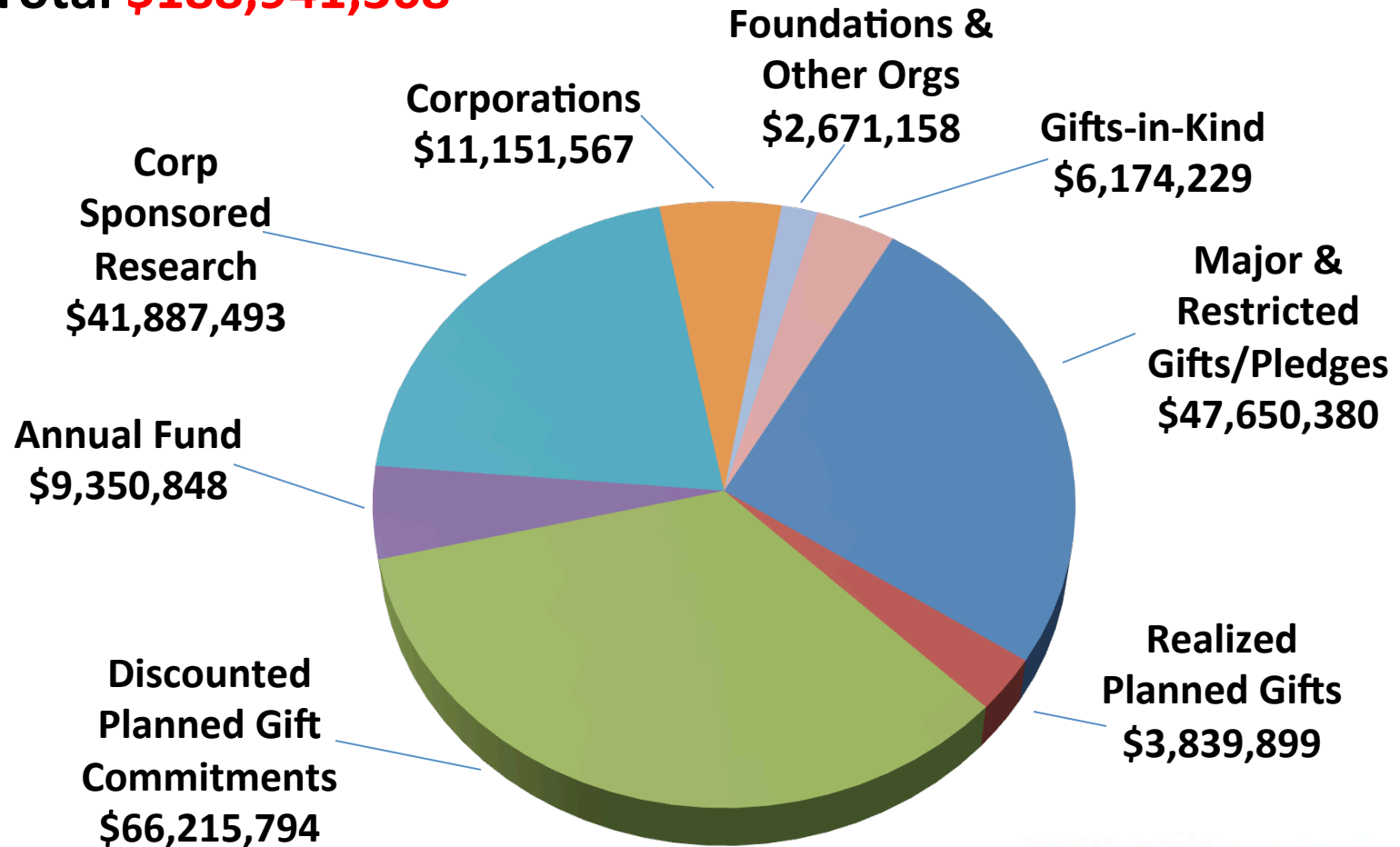
Campaign

- ❖ End Date – June 30, 2013
- ❖ Goal - \$200M

Campaign Totals by Source

June 2006 – November 30, 2012

Total **\$188,941,368**



Michigan Tech

Create the Future

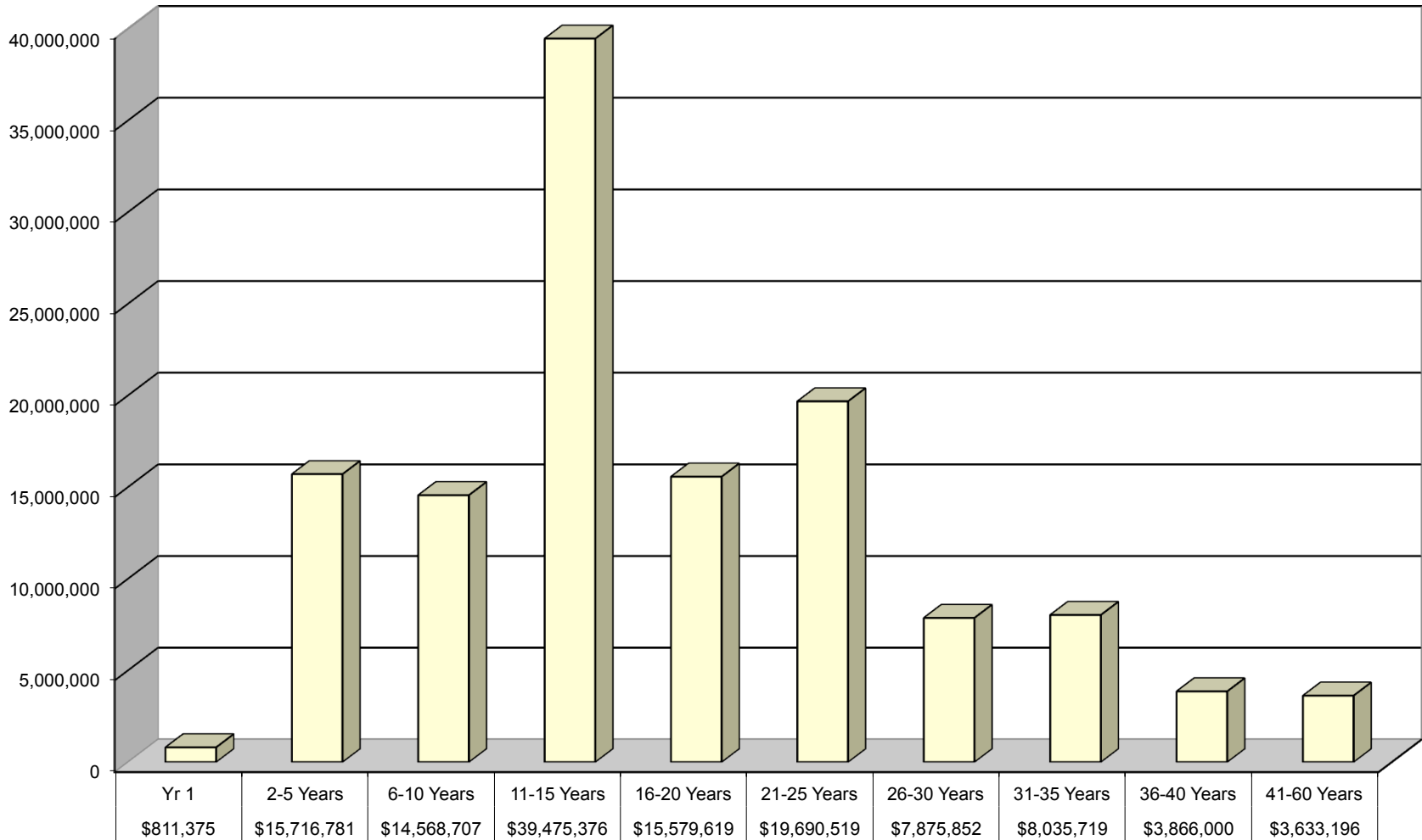
MICHIGAN TECHNOLOGICAL UNIVERSITY
Generations of Discovery
Campaign Progress Summary
as of November 30, 2012

Alumni & Friends	\$127,056,922
Corporations	53,039,059
Private Foundations	2,671,158
Gifts-in-Kind	<u>6,174,229</u>
Grand Total	<u><u>\$188,941,368</u></u>

Michigan Technological University
Generations of Discovery
Campaign Breakdown
As of November 30, 2012

• Facilities	\$ 7.2M
• Scholarships/Fellowships	31.2M
• Chairs & Professorships	38.2M
• Depts. Program Support/Ops.	57.1M
• Unrestricted or undesignated	4.8M
• Research	<u>50.4M</u>
TOTAL	\$188.9M

Michigan Tech Fund
Planned Giving Registry (\$129,253,143.47) - Actuarial Expectancy by Years
July 31, 2012



The Future of Michigan Tech

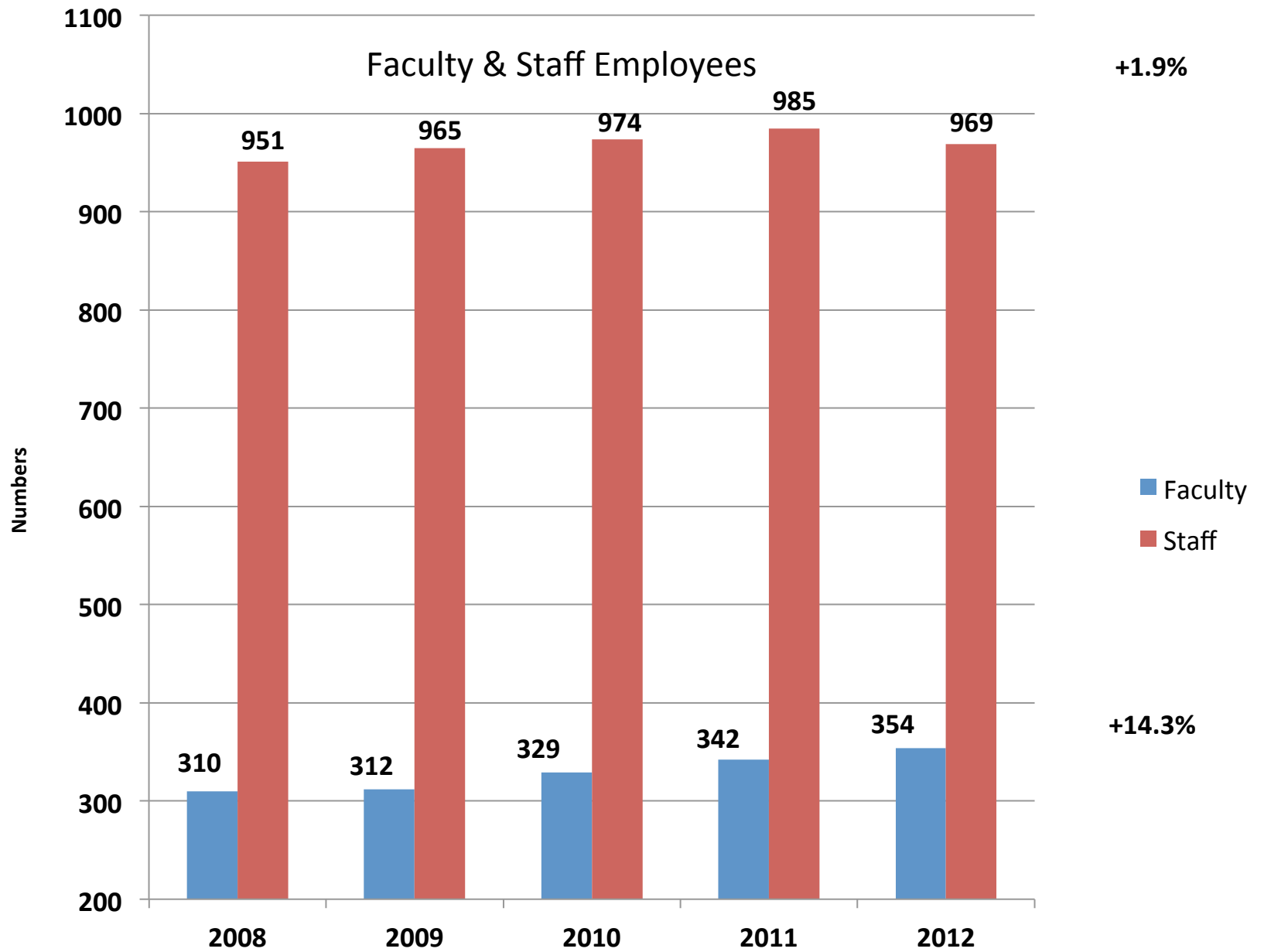
-Turning the Strategic Plan into Action

- ✓ 1. We Must Change
Top National University
- ✓ 2. How We Change
Attract Research Faculty
- ✓ 3. What We Must Do
We all have a critical role

BUDGET

Current Fund Balances 2006-2012

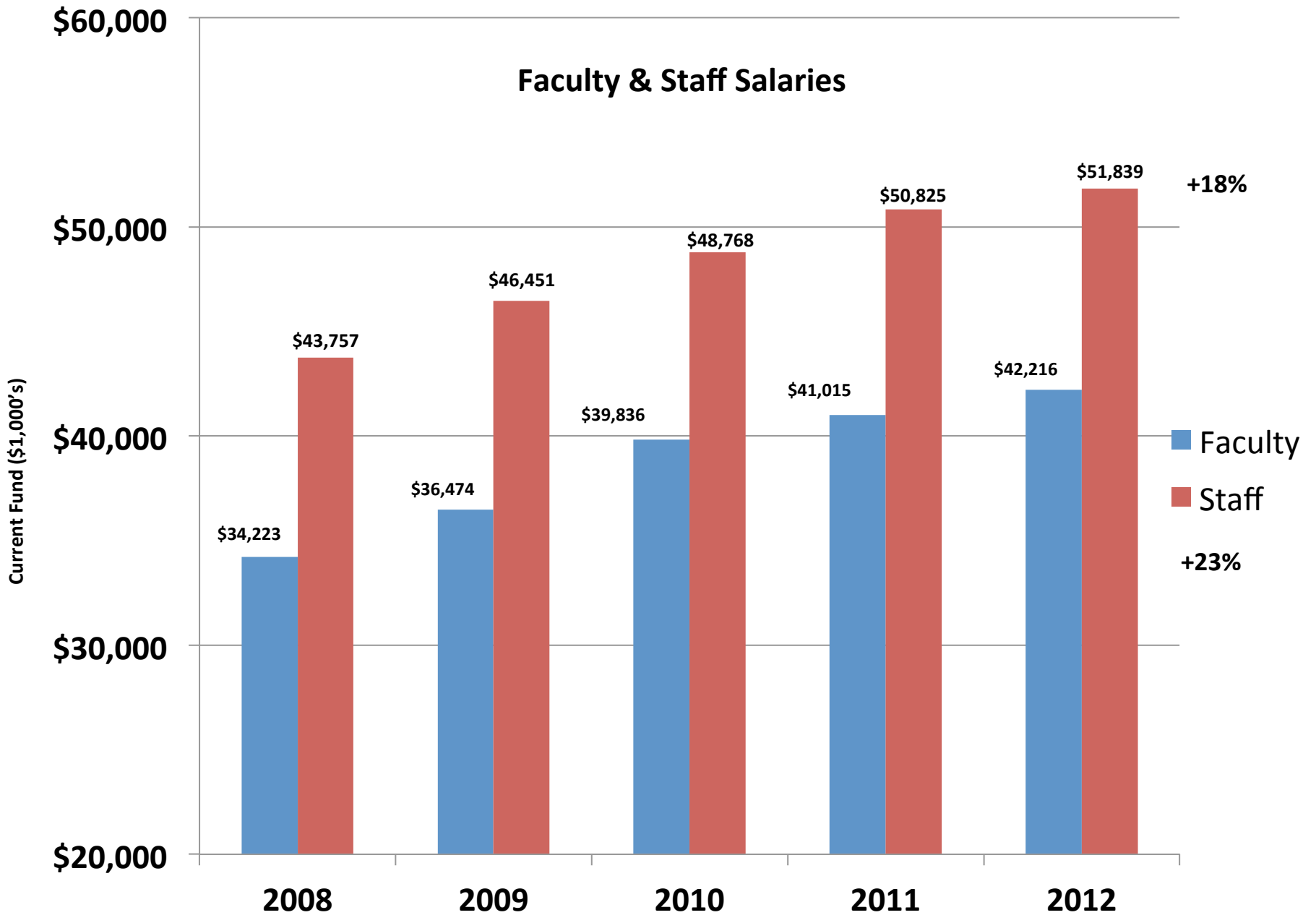
FISCAL YEAR	GENERAL FUND	DESIGNATED FUND	AUXILIARY FUND	R&I FUND	EXPENDABLE RESTRICTED FUND	TOTAL CURRENT FUNDS
6/30/2006	(9,418,709)	11,711,149	9,361,936	1,100,429	1,801,945	14,556,750
6/30/2007	(9,144,578)	12,704,216	8,122,457	1,366,980	3,030,770	16,079,845
6/30/2008	(9,639,258)	14,459,317	9,210,497	(1,548,501)	2,933,114	15,415,169
6/30/2009	(11,119,692)	17,622,935	9,408,680	(3,098,785)	2,821,643	15,634,782
6/30/2010	(11,260,088)	17,669,080	8,109,037	(1,897,826)	2,692,577	15,312,779
6/30/2011	(10,999,503)	17,482,191	6,850,582	(62,315)	2,808,383	16,079,338
6/30/2012	(12,602,185)	15,816,151	9,235,156	(3,551,797)	3,590,414	12,487,739



Source: University Compendium

FY (Fall Census)

Faculty & Staff Salaries



General Fund FY 2012	Planned (millions)	Actuals (millions)
Operating Revenue	\$118,930	\$117,139
Operating Expenses	\$(144,951)	\$(148,927)
Transfers	\$(14,740)	\$(12,734)
Non-Operating Revenues	\$40,761	\$42,919
NET	---	\$(1,603)

Current Fund FY 2012	Budget (millions)	Actuals (millions)
Operating Revenue	\$192,175	\$189,024
Operating Expenses	\$(244,494)	\$(247,400)
Transfers	\$(6,037)	\$(5,043)
Non-Operating Revenues	\$58,398	\$59,828
Net	\$42	\$(3,591)

General Fund FY13 Budget

Budget (thousands)

	Base Year	Budget Year	Variance	
	FY12	FY13		
Operating Revenues				
	\$ 118,929,621	122,901,384	3,971,763	3.34%
Operating Expenses				
Staff S&W	\$ (27,728,705)	(27,864,030)	(135,324)	0.49%
Faculty S&W	\$ (39,511,577)	(41,609,216)	(2,097,638)	5.31%
Grad Student S&W	\$ (3,369,235)	(3,504,004)	(134,769)	4.00%
Undergrad Student S&W	\$ (984,956)	(943,447)	41,509	-4.21%
Fringe Benefits	\$ (24,209,149)	(25,438,614)	(1,229,465)	5.08%
Supplies & Services	\$ (16,662,514)	(15,203,289)	1,459,225	-8.76%
Scholarships	\$ (27,264,097)	(31,453,097)	(4,189,000)	15.36%
Utilities	\$ (4,520,850)	(4,520,850)	0	0.00%
Carry forward/Contingency Reserve	\$ (3,200,000)	(3,200,000)	0	0.00%
	\$(147,451,083)	(153,736,546)	(6,285,463)	4.26%
Transfers				
	\$ (12,239,738)	(11,724,738)	515,000	-4.21%
Non-operating Revenues (Expenses)				
	\$ 40,761,200	42,559,900	1,798,700	4.41%
Net Income (Loss)	\$ -	0	0	



Commencement Speaker

Dr. Arden L. Bement

Chief Global Affairs Officer

Director, Global Policy Research Institute

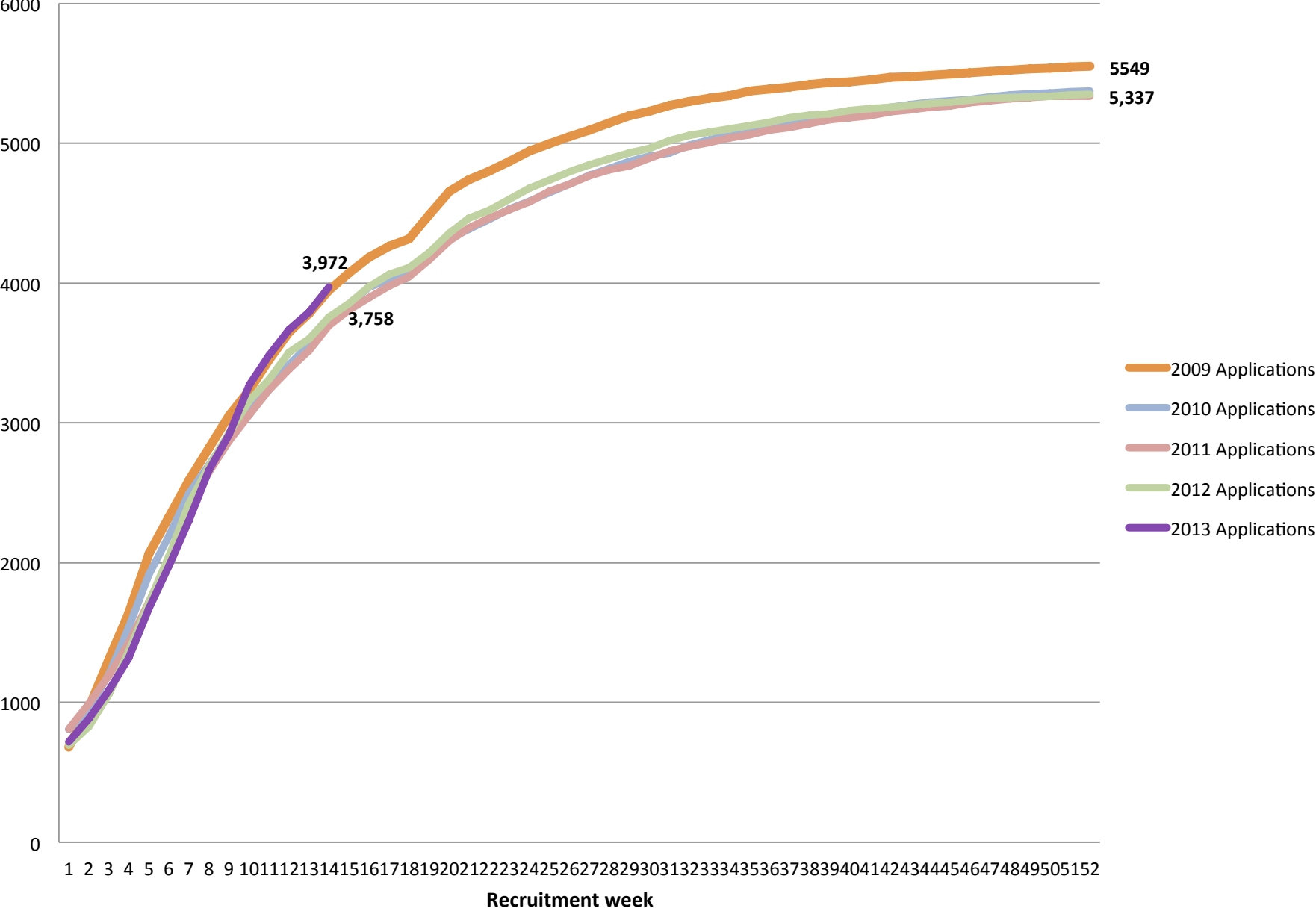
Purdue University

Former Director, National Science Foundation

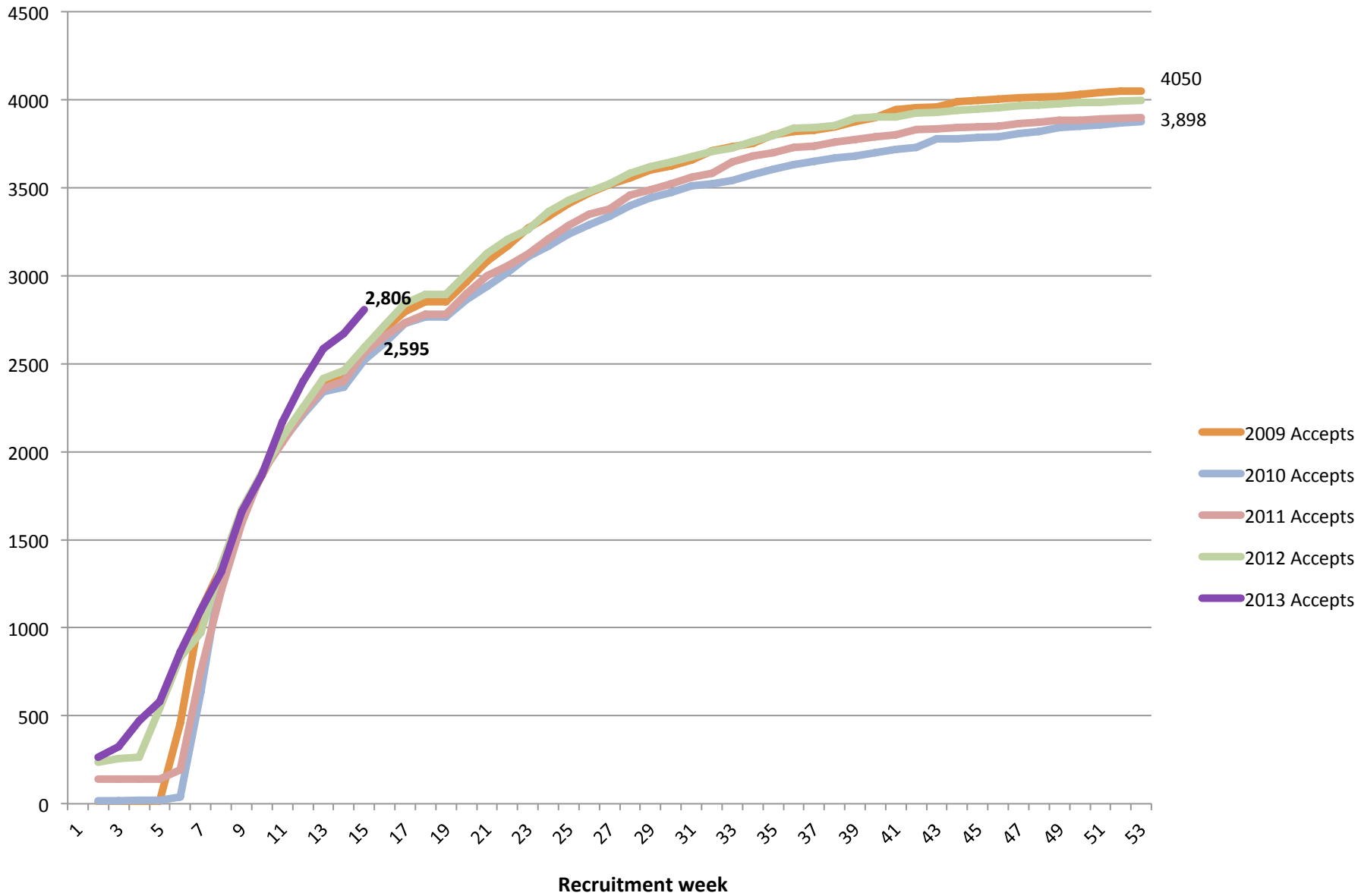
Midyear Commencement Statistics

➤ Undergraduate	346
➤ Graduate	134
24 - PhD	
110 - Masters	

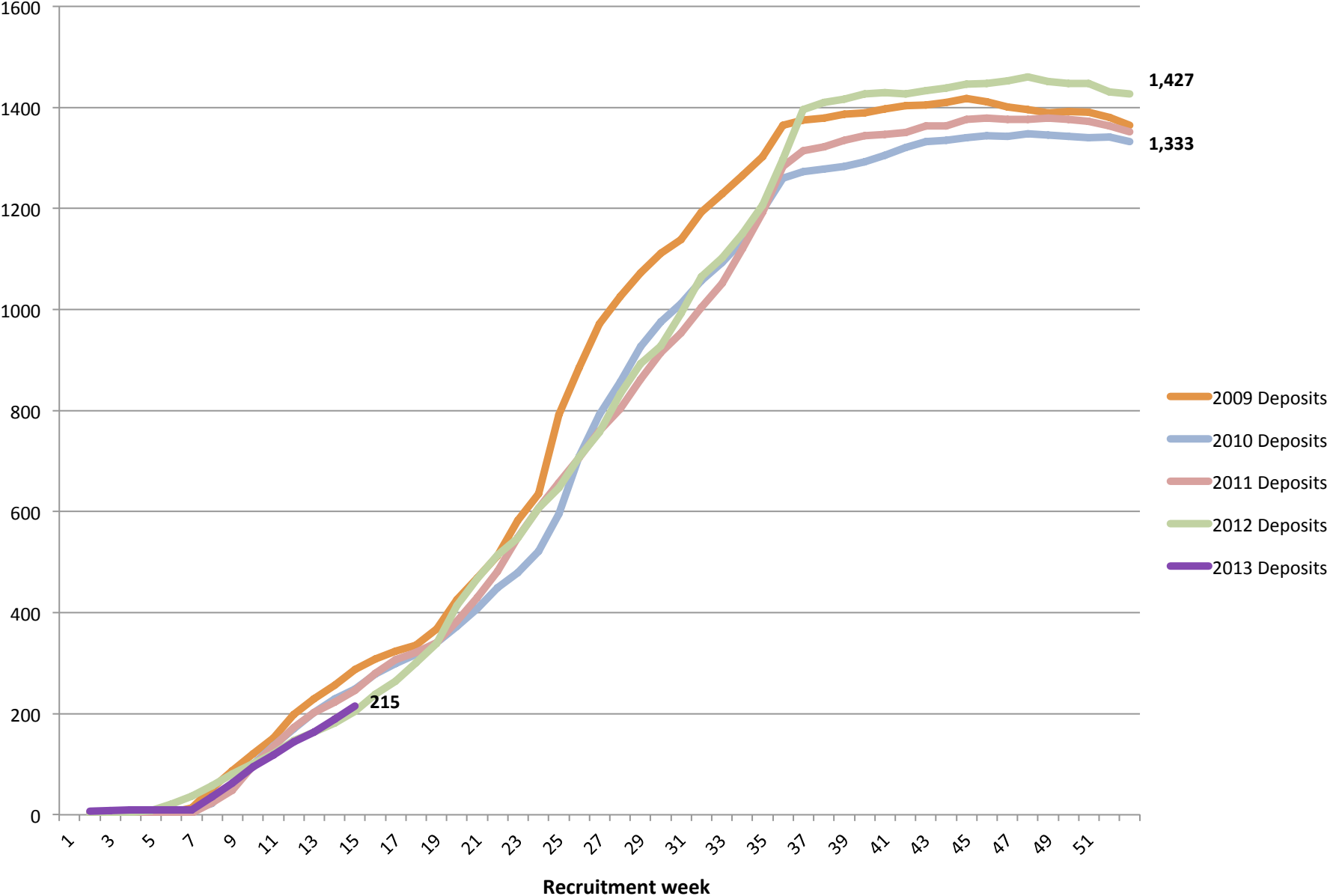
Total Applications



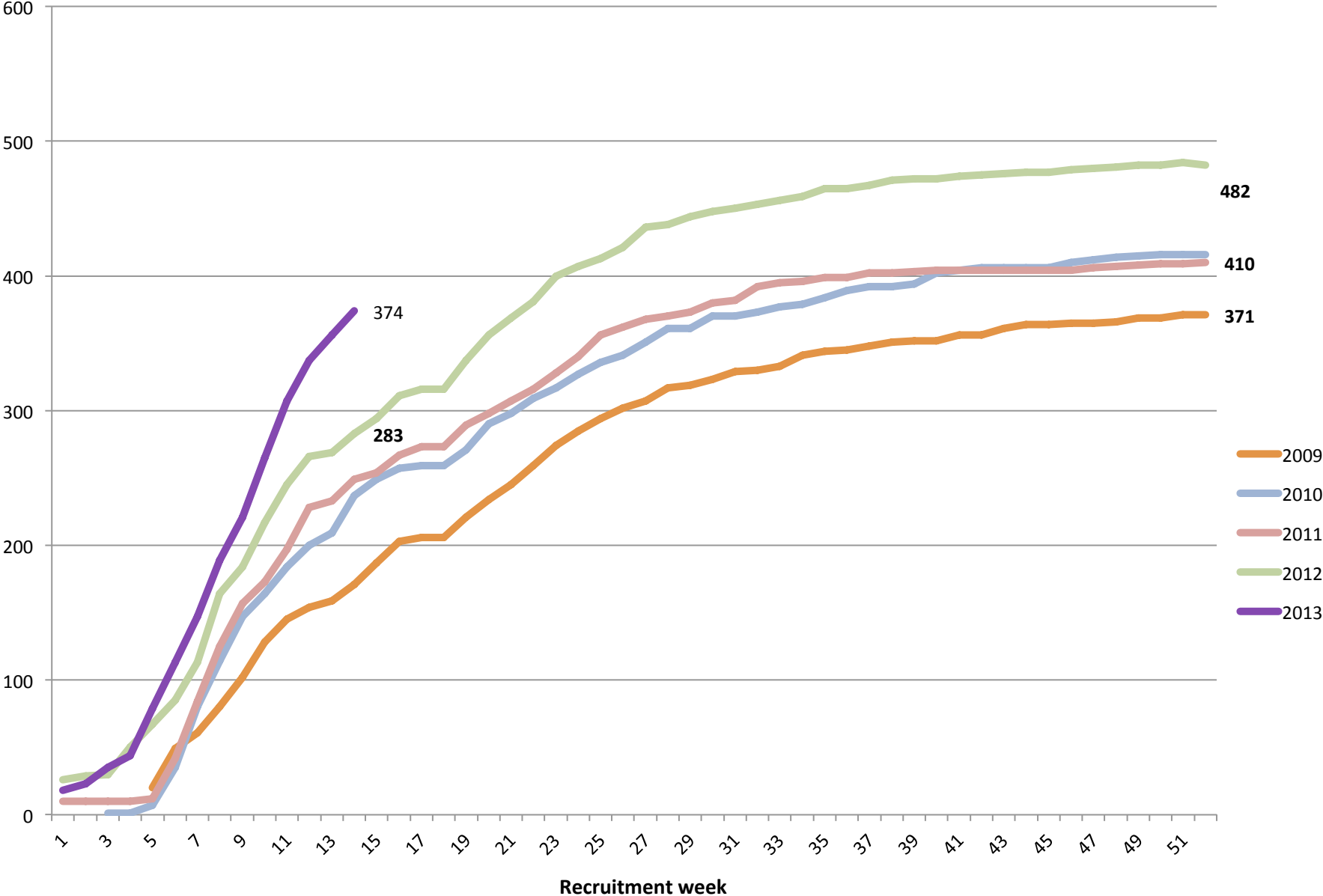
Accepted Applications



Enrollment Deposits



Domestic Minority Accepted Applications





**SMART
CRAZY**

These are the friends you've been looking for your whole life.

XX♀ Xtraordinary Women
of Michigan Tech

MICHIGAN TECHNOLOGICAL UNIVERSITY
1885
CRAZY SMART
HOUGHTON, MICHIGAN



Sure, there are plenty of xy chromosome pairs on campus, but don't underestimate the more than 1,700 women who come to Michigan Tech and love everything about it. They're crazy smart (and really nice). And they might just be the best friends of your life!



“ My best friend is always up for an adventure. We've explored the world together—hiking the Pyrenees mountains, sampling waffles in Belgium, rockclimbing in Moab, and riding horses through the woods of Northern Michigan. But most of all, Sheridan is my best friend because she's funny, brilliant, kind, talented, and an extraordinary Michigan Tech woman! ”

—Jessica Daignault, fifth-year
environmental
engineering major





20 games in the 2012 season, 15 wins, 2 ties, a heck of a lot of road trips. Game faces on. We are proud. We are varsity athletes. #WeAreHuskies

Riding a Zamboni in a crown?

Only at Michigan Tech! That's what happens when you're the Winter Carnival Queen. "We go to the coolest school ever! Tech has brains and innovation beyond belief, a down-to-earth community, and—given the opportunity—we kick butt at anything we set our minds on accomplishing."



—Lydia Patch, 2011 Winter Carnival Queen, 2012 graduate, Biological Sciences

facebook.com/WomenofMichiganTech



facebook

Search for people, places and things

Women of Michigan Tech
 4 likes · 4 were here

College/University
 Michigan Tech's great times, great friends, and experiences you'll remember for a lifetime.

About · Photos · Likes · Map

Post · Here · Video

Write something...

Women of Michigan Tech
 November 17 · 49

Life @ Tech (13 photos)
 What life's like at this awesome institution, besides the crazy smart school.

Like · Comment · Share

Women of Michigan Tech
 November 20 · 49

Team of Winter Carnival!
 1. Ball over valves. 2. Eat deep-fry fishbowl bars. 3. Wear awesome hats. 4. Have fun, so much fun.

Like · Comment · Share

Women of Michigan Tech
 November 15 · 49

Future engineers and scientists—would you have loved this as a kid?

Mona Dean, B.S. in Mechanical Engineering
 It's not as if she's a girl! I would buy this for her too. #WOM

Like · Comment · Share

Women of Michigan Tech
 November 11 · 49

Who says you have to choose between science and the art? Lindsey is enjoying marine science & winning in art—her work was even displayed in the Michigan House of Representatives Office Building!

Like · Comment · Share

Women of Michigan Tech
 November 14 · 49

"It is not easy to be a pioneer — but oh, it is fascinating!"
 —Aesop's parable by Elizabeth Blackwell, the first female medical doctor in the US. #WomenofMichiganTech

Like · Comment · Share

Recommendations

Write a recommendation...

Likes

- Michigan Technological University 211 friends and 40 likes
- Michigan Tech Admissions 41 friends and 40 likes

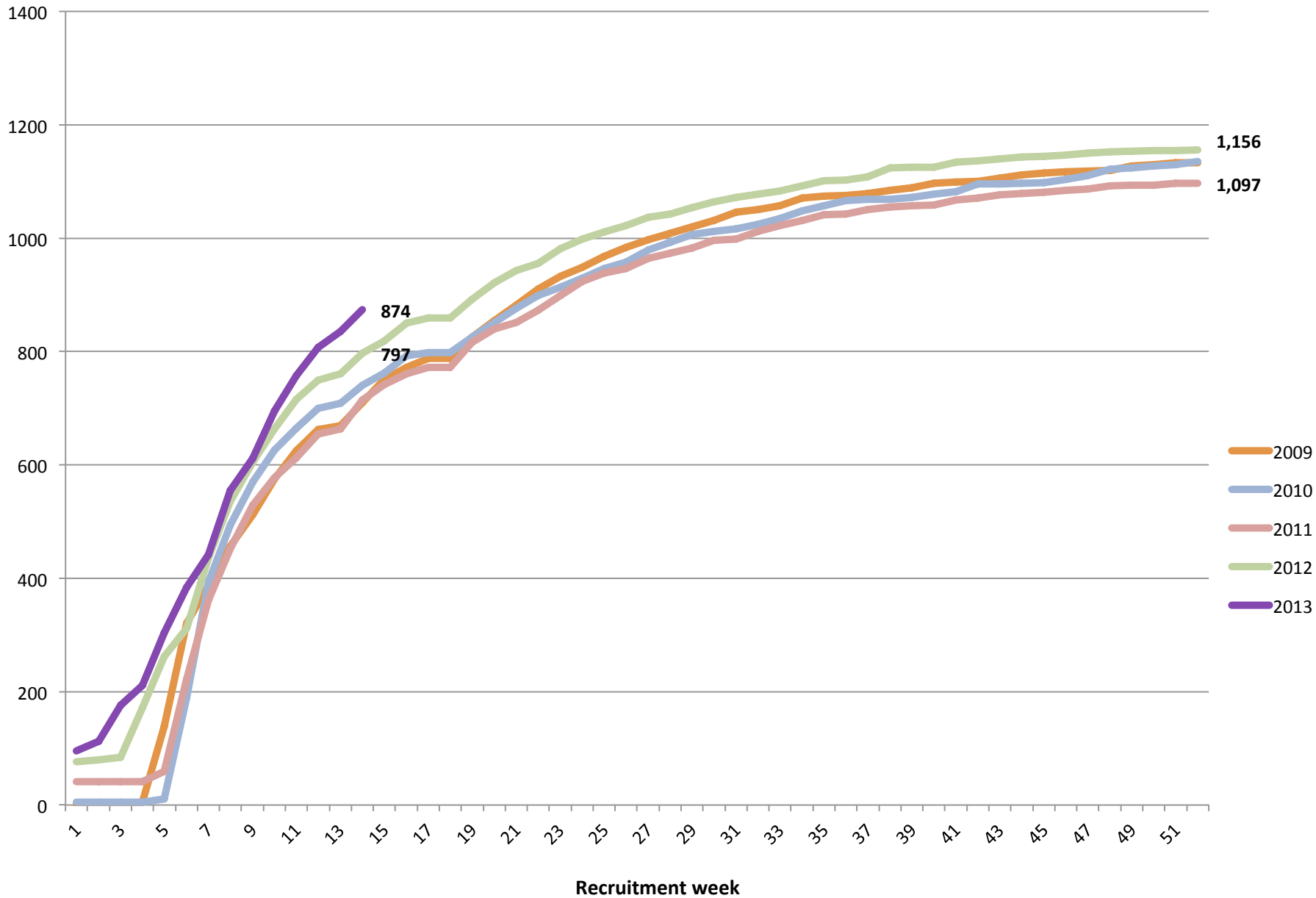
Activity Stream

Women of Michigan Tech added a link from November 2, 2012 to their timeline.

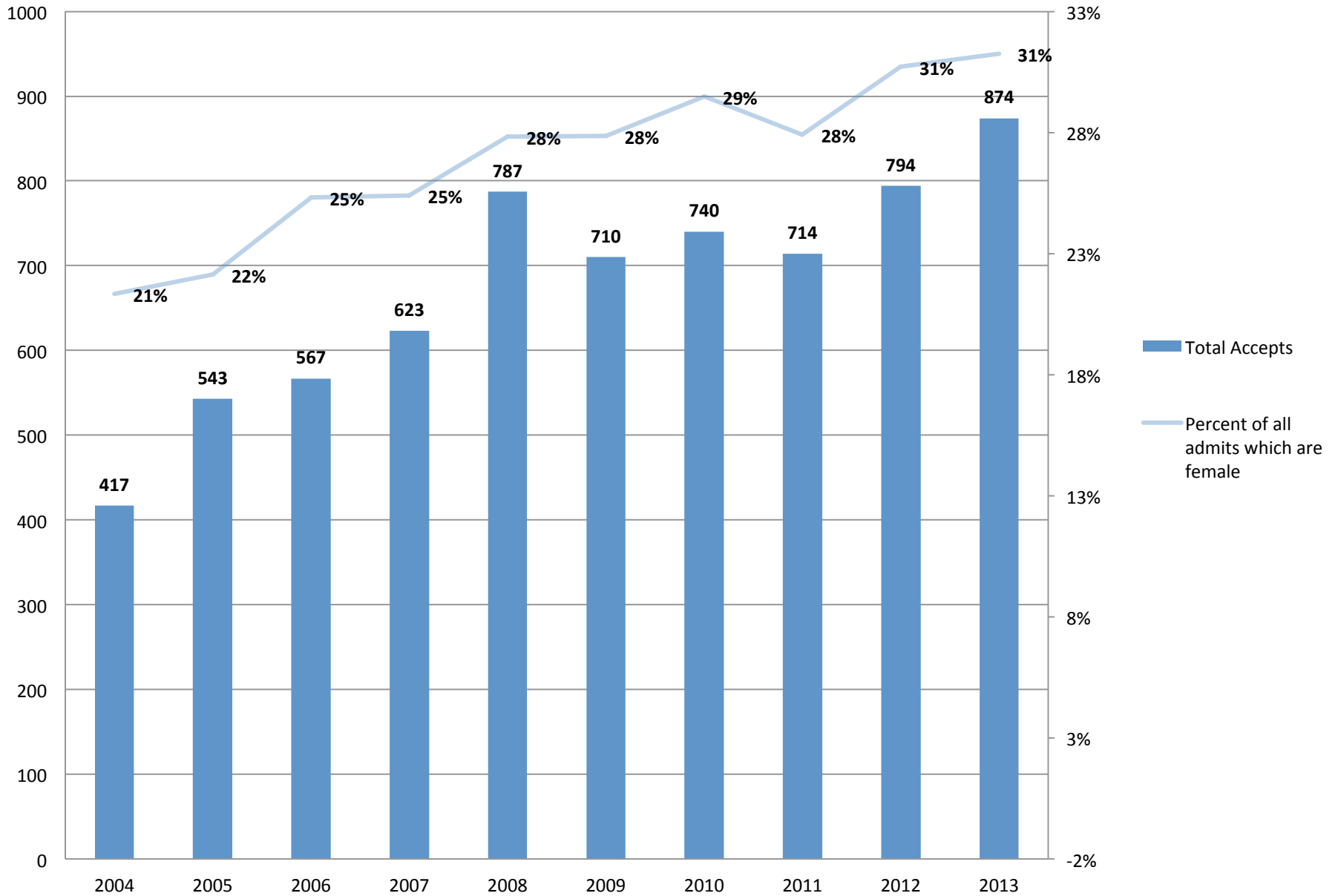
Women of Michigan Tech
 November 14 · 49

Like · Comment · Share

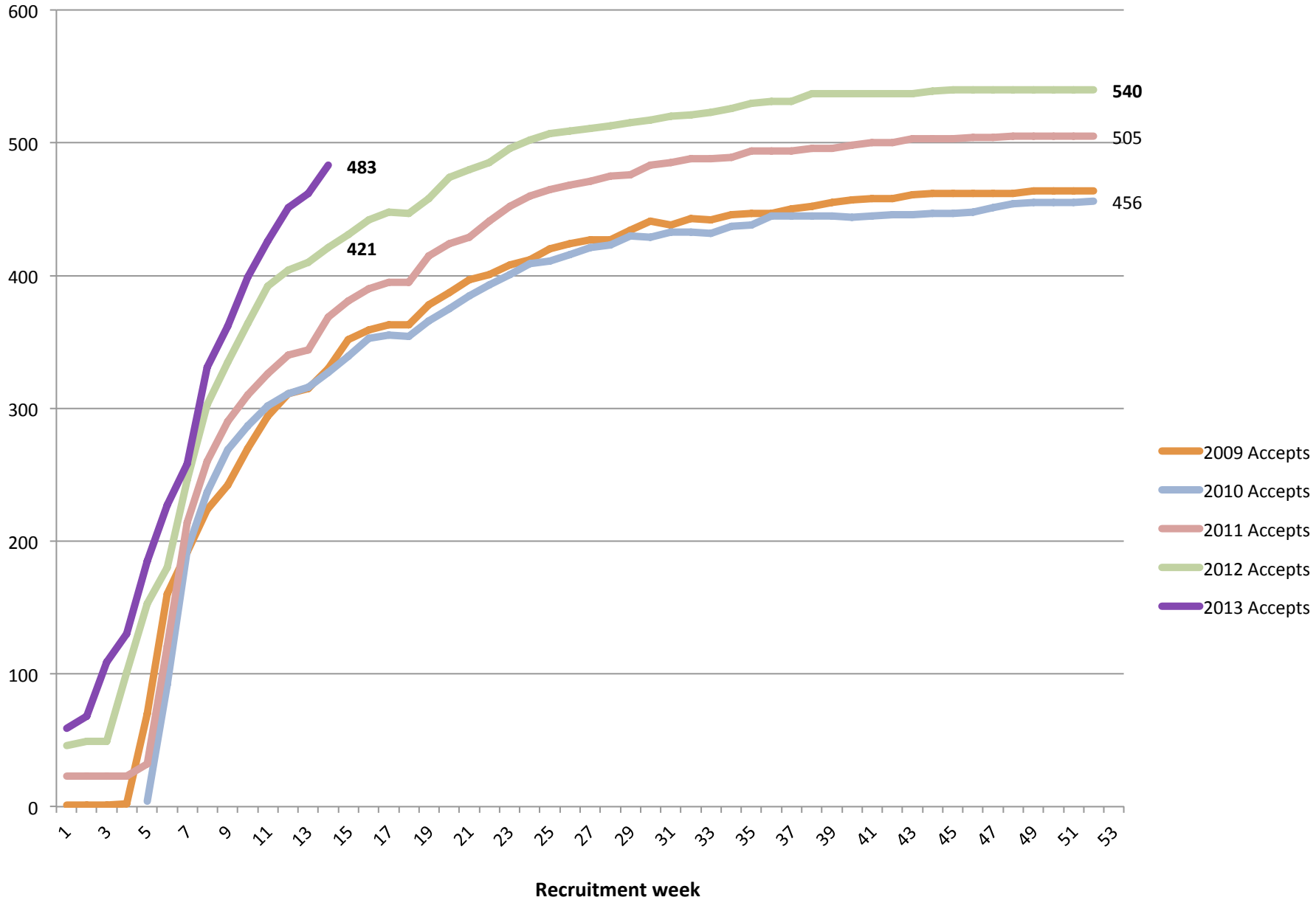
Female Accepted Applications



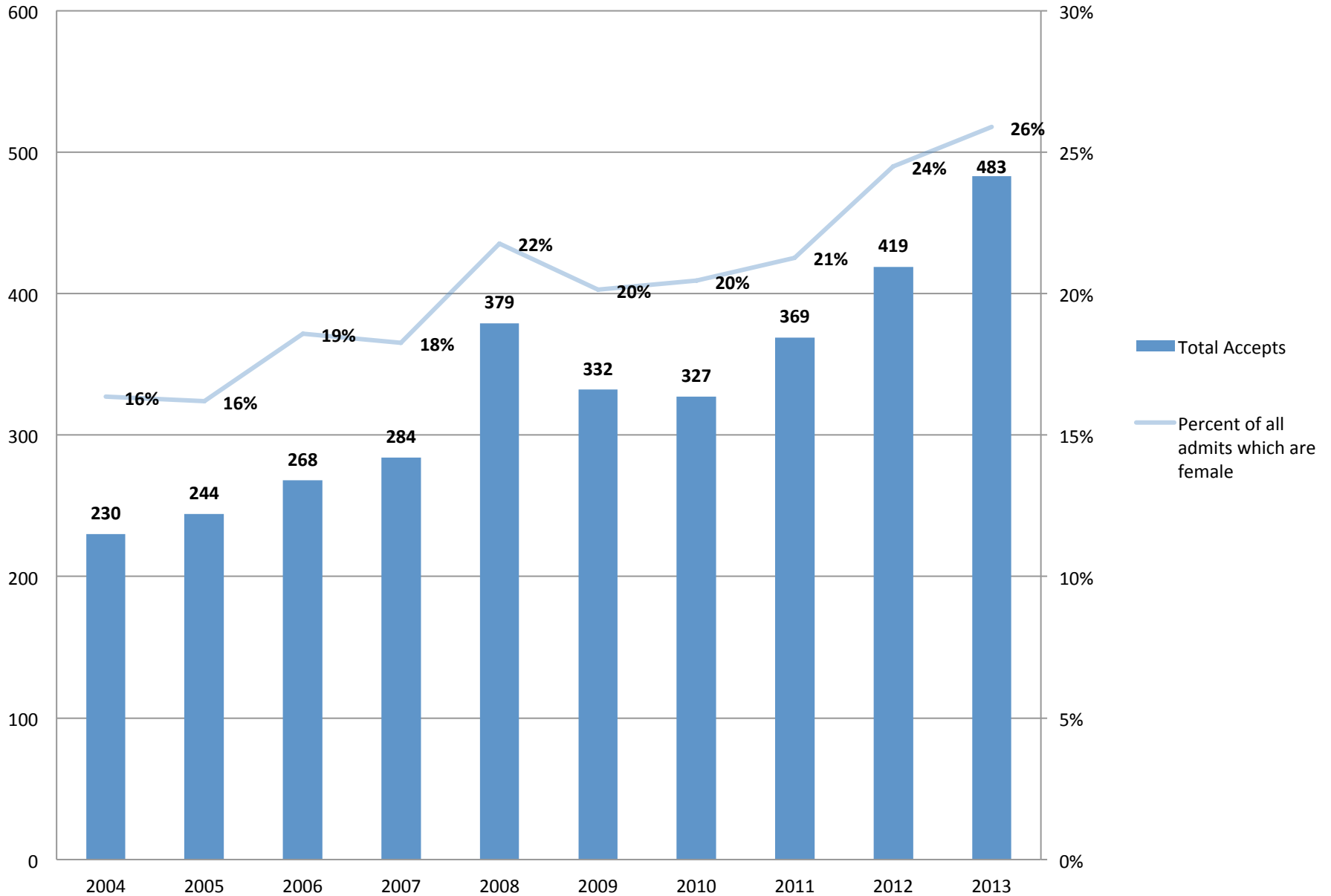
Ten year female admit history as of Dec. 1 each year



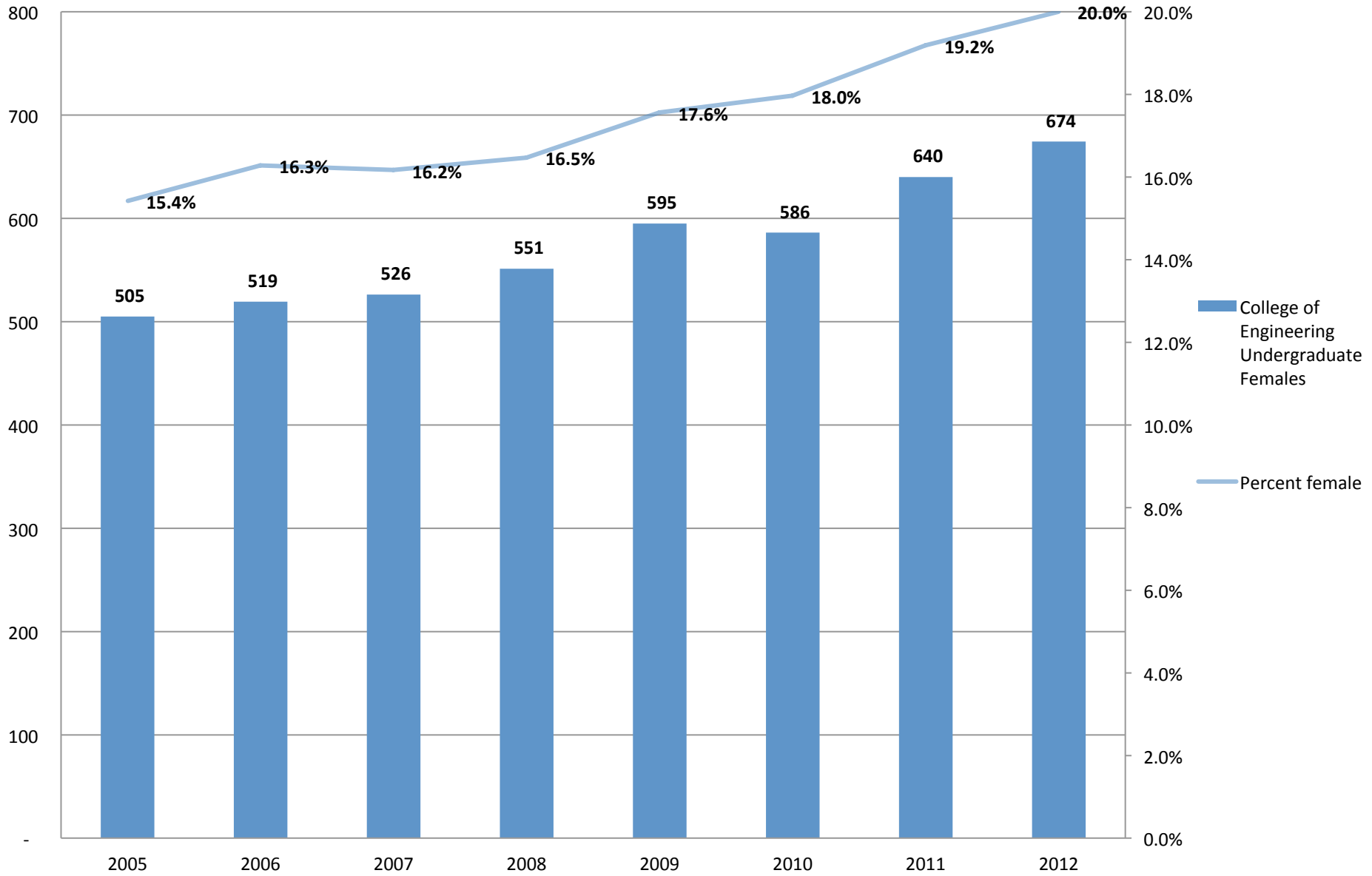
COE Female Accepted Applications



Ten year COE female admit history as of Dec 1 each year



UG COE female total



LEAN

Continuous Improvement using Lean Principles

Lean Facilitators and Implementation Leaders Complete
Training in November



Continuous Improvement using Lean Principles

Lean Training Funded by Federal Mediation and Conciliation Services Grant

- \$55,000 Awarded
 - Lean Consultants Provided Training
 - Lean Facilitators and Implementation Leaders Trained
 - Five Campus-wide Sessions Occurred
 - Lean Books and Resources Purchased

Use Lean culture building to enhance labor-management relationships and communication.

23 Lean Facilitators – Trained to facilitate Kaizen Improvement Events for any campus department or area interested in making improvements.

- Rick Berkey, Institute for Interdisciplinary Studies
- Ernie Beutler, Dining Services
- Catherine Burns, Human Resources
- Derrick Butkovich, Facilities Management
- Theresa Coleman-Kaiser, Vice President for Administration Office
- Wendy Davis, Auxiliary Services
- Laura Givens, Career Services
- Laura Harry, Memorial Union
- Bob Hiltunen, Auxiliary Services
- Shellie Hubert, Enrollment Services
- Alane Issacson, Athletics and Recreation
- Amie Ledgerwood, Geology and Mining
- Gina LeMay, Sponsored Operations
- Tanya Maki, School of Business and Economics
- Rhonda McClellan, Facilities Management
- Margo O'Brien, Accounting Services
- Heidi Reid, Memorial Union
- Julie Ross, Civil and Environmental Eng.
- Megan Ross, Auxiliary Services
- Julie Seppala, Sponsored Programs Office
- Shane Sullivan, IT Services and Security
- Kathy Wardynski, Dining Services
- Rachel Wussow, Student Activities

10 Lean Implementation Leaders – Trained in Lean concepts aimed at building a Lean practice into the day to day work for an area/department.

- Karla Aho, Office of Development
- Julie Blair, J. Robert Van Pelt Library
- Theresa Coleman-Kaiser, Vice President for Administration Office
- Wendy Davis, Auxiliary Services
- Bob Hiltunen, Auxiliary Services
- Wendy Jones, School of Forestry & Environmental Resources
- Jarrod Karau, Administrative Information Systems
- Tammy LaBissoniere, Sponsored Programs Office
- Gregg Richards, Facilities Management
- Cayce Will, IT Services and Security

Get Started

- Hold a Kaizen Improvement Event
- Tailored Lean Workshops and Trainings

Wendy Davis,
Manager of Process
Improvement

wmdavis@mtu.edu

7-3180



INTERNET SECURITY

- ❖ 1.2M internet attacks per day
- ❖ Average of 40 virus infections per day
- ❖ 5-10 phishing attempts per week

Thanks For All You Do!

QUESTIONS