

CAMPUS FORUM

April 26, 2011

Strategic Plan

- Approved by Board of Control on July 16, 2009
 - ✓ Major Goals Remain Same
 - People
 - Distinctive Education
 - Research/Scholarship/Creativity
- <http://www.mtu.edu/stratplan/>

Promotion Recommendations

Full Professor

- Seth Donahue
- Jason Keith
- Leonard Bohmann
- Zhi (Gerry) Tian
- Brad King
- Jeffrey Naber
- Yoke Khin Yap

Associate Professor

Promotion & Tenure Recommendations

- Keat Ghee Ong
- Yue Li
- Amlan Mukherjee
- Michael Bowler
- Qiuying Sha
- Fabrizio Zanello
- Fernando Ponta
- Gregory Graman
- Hao (Howard) Qi
- John Vucetich
- Abdul Nasser Al araje
- Yu Cai

Promotion to Senior Lecturer

- Evelyn Johnson
- Susanne Kilpela
- Charles Margraves

Spring Commencement 2011

- 753 Undergraduates
- 150+ Graduates

Current Fund FY11

(in thousands)

	<u>Original Projection</u>	<u>3rd Qtr Projection</u>
Revenue	245,429	247,777
Expense	(245,218)	(247,526)
	<hr/>	<hr/>
Net Income	<u>211</u>	<u>251</u>
	<hr/>	<hr/>
Current Fund Balance	<u>15,524</u>	<u>15,564</u>

Note: Current Fund includes General Fund, Designated Fund, Auxiliaries, Retirement and Insurance, and the Expendable Restricted Funds.

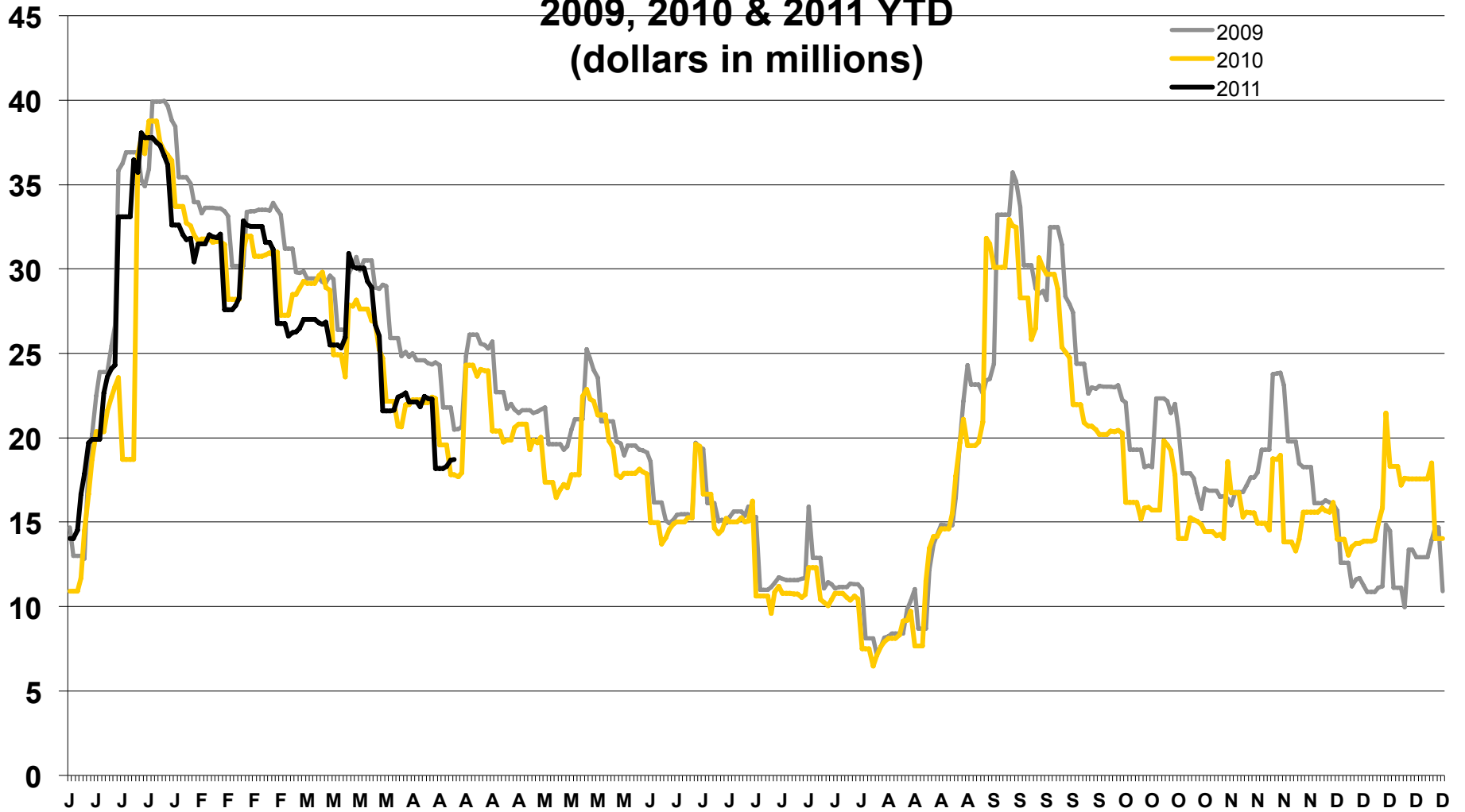
Current Fund Balances FY08 Thru FY11

	<u>Balance</u> <u>06/30/08</u>	<u>Balance</u> <u>06/30/09</u>	<u>Balance</u> <u>06/30/10</u>	<u>Projected</u> <u>Balance</u> <u>06/30/11</u>
TOTAL CURRENT FUND	\$ 15,415	\$ 15,635	\$ 15,313	\$ 15,564
LEGALLY RESTRICTED FUNDS	<u>(2,933)</u>	<u>(2,822)</u>	<u>(2,692)</u>	<u>(2,546)</u>
UNRESTRICTED FUND BALANCE	<u>\$ 12,482</u>	<u>\$ 12,813</u>	<u>\$ 12,621</u>	<u>\$ 13,018</u>

CASH FLOW

2009, 2010 & 2011 YTD

(dollars in millions)



Michigan Tech 5-Year Budget Development 2012-2017

- Support the Core Mission:

“instill the knowledge and confidence that graduates need to be top ranked in the degrees we offer”

Budget Development Guiding Principles

- Balanced Budget
- Tuition Restraint
- Strategic Hiring
- Strategic Realignment/Investment

Specifically

- No Furloughs
- No University-Wide Salary Reduction
- No University-Wide Hiring Freeze
- Tuition Increase $\leq 7\%$
- Strategic Budget Reductions in Low Single Digits, not across-the-board
- Strategic Consolidation of Positions and Realignment of Responsibilities through Attrition

In Other Words

- No Knee Jerk Reactions
- Follow Our Strategic Plan

- Financial Data Group (3D's) has met with Deans and Most Directors
- Review with Board of Control
- Review with Senate Leadership
- Carry Forward/Contingency Policy in Place
- Increase Philanthropic Support
- Restructure Billing of Mandatory Fees
- Examine Credit Card Policy

Proposed 2012 State Appropriation

(\$ in Millions)

	Governor		House		Senate
Operations	\$37.41		\$37.43		\$40.73
Tuition Restraint Incentive	\$ 3.32		\$ 3.32		
Gross Appropriation	\$40.73		\$40.75		\$40.73
Change from Current Appropriation	-7.2		-7.2		-7.2

Proposed 2012 Appropriations

Bill Boilerplate Discussions

GOVERNOR –

Combine Financial Aid for Private and Public
Research Universities Unchanged

SENATE –

Defines Research Universities as “High” & “Very High” -
Carnegie

HOUSE –

Recognized High Cost Programs at Michigan Tech
No Recognition of Research Universities

Michigan Tech

Create the Future

FY12 Current Fund Planning Parameters

Revenue

Enrollment Students +55

Tuition +6.95%

Indirect Cost Recovery +9%

State Appropriations -15%

FY12 Current Fund Planning Parameters

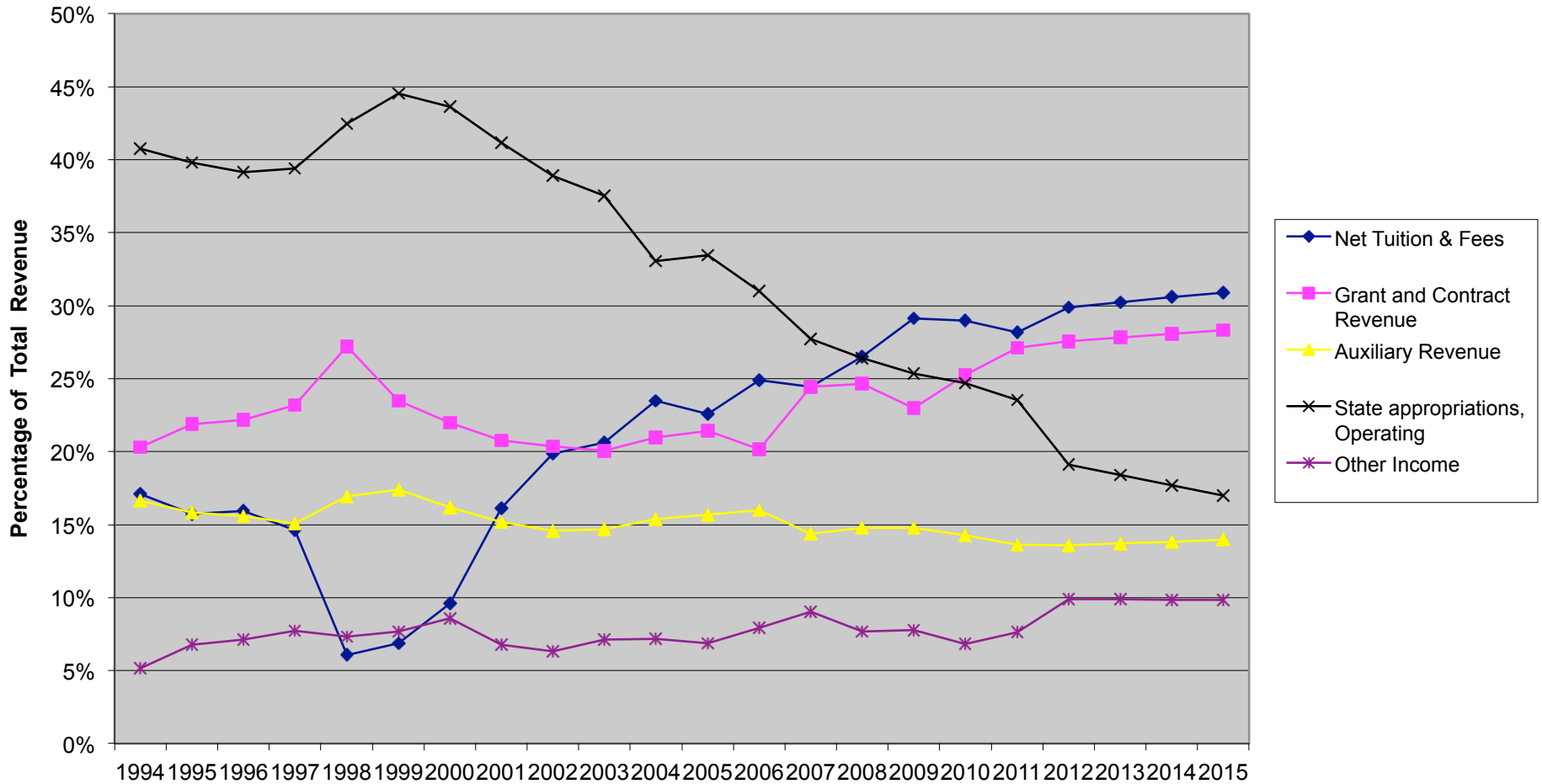
Expenditure Changes

Promotional Increases	+\$400k
Reduction in Credit Card Fees	-\$600k
Utilities Decrease	-\$200k
Fringe Rate	-\$1.2M
Carryforward Reserve	+\$3.2M
2% Academic/4% Admin. Savings	-\$3.0M
Financial Aid (Grad & Undergrad.)	+\$1.3M
Auxiliaries	-\$800k

Comparison FY11- FY12 Current Fund Projections (\$ in Millions)

	FY11 <u>(March Proj.)</u>	FY12 _____
Operating Revenue	180.3	192.5
Operating Expenses	242.0	244.8
Non-Operating Rev./Exp.	67.5	58.4
Net Increase Fund Balance	0.25	0.04

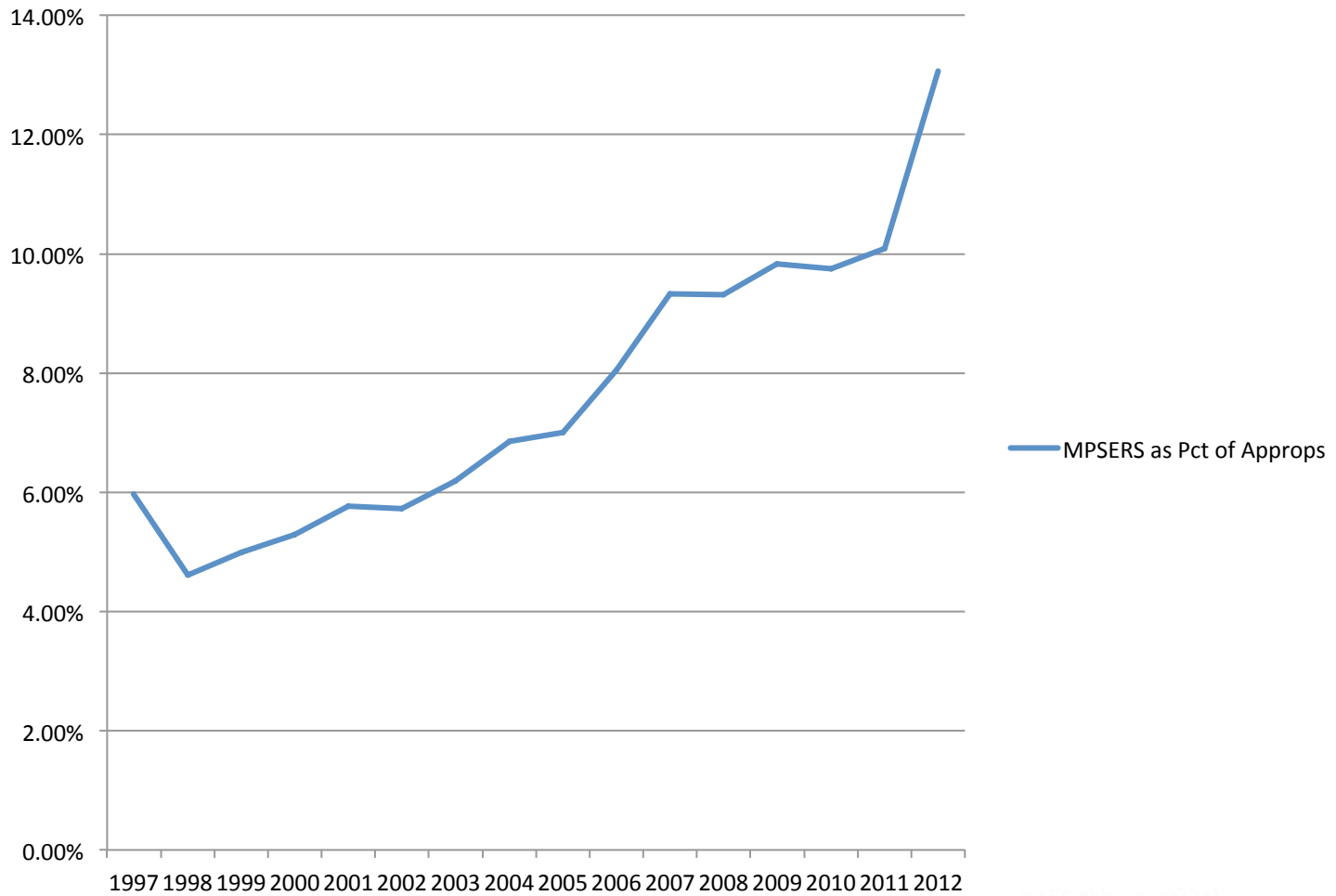
CPI Adjusted Revenue Streams 1994-2015 As a Percentage of Total Revenue



MPSERS Issues

- 1945 - System Begins, State pays cost
- 1974 - Universities assessed part of cost
- 1975 - Health Care added for retirees and dependents
- 1994 - Universities must fund all cost of retiree pension and health
- 1996 – No new MPSERS Universities' employees in MPSERS

MPSERS as Pct of Approps



THE BASIC PROBLEM FOR UNIVERSITY MPSERS

For Non-University MPSERS (K-12)

- 1.5 WORKERS per retiree

For University MPSERS

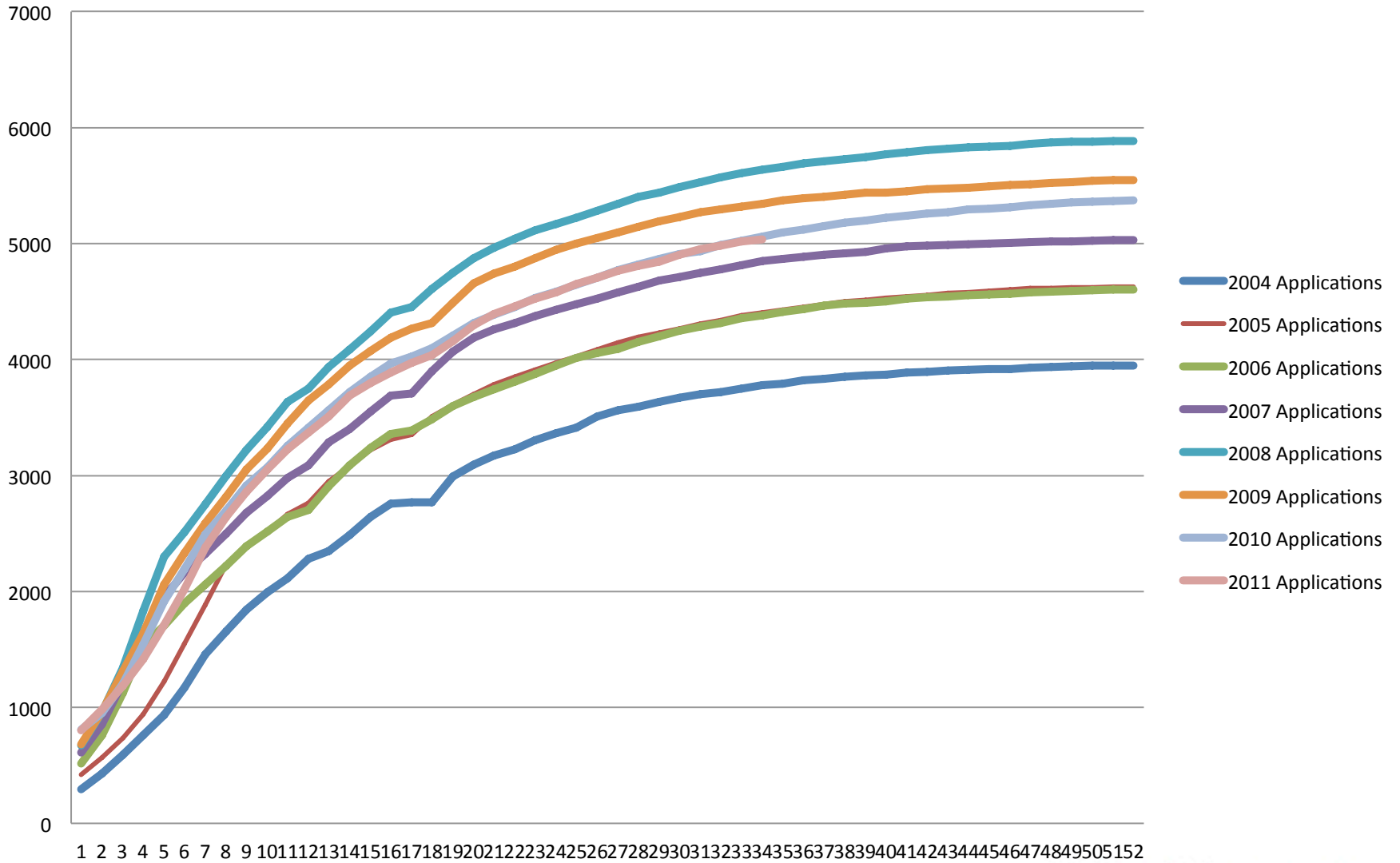
- 1.8 RETIREES per worker

MPSERS for Michigan Tech FY11 and FY12

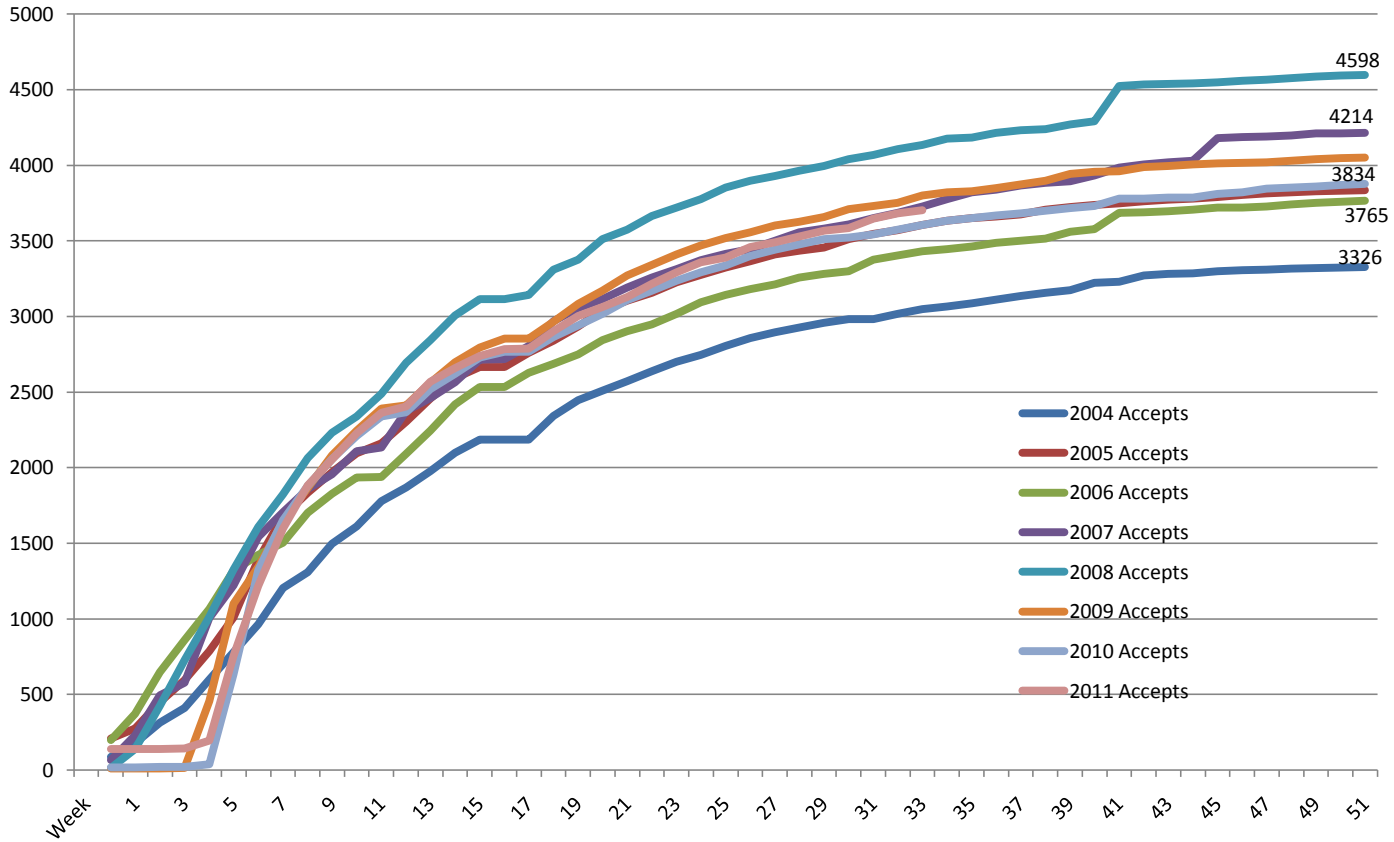
	<u>FY11</u>		<u>FY12</u>		<u>Est.Percent Increase (Decrease)</u>
	<u>Rate</u>	<u>\$</u>	<u>Rate</u>	<u>\$</u>	
Members pension normal charge	4.11%	602,846	3.21%	470,836	-22%
Pension unfunded liability					
Members	9.73%	908,764	13.41%	1,252,469	38%
Non-Members	9.73%	722,478	13.41%	995,728	38%
Retiree Health Care		<u>2,602,717</u>		<u>2,902,029</u>	12%
Total		<u>4,836,805</u>		<u>5,621,062</u>	<u>16%</u>

Note: Since exact payroll amounts for each category aren't known yet, FY12 numbers are estimates based on current MPSERS payroll of \$12M.

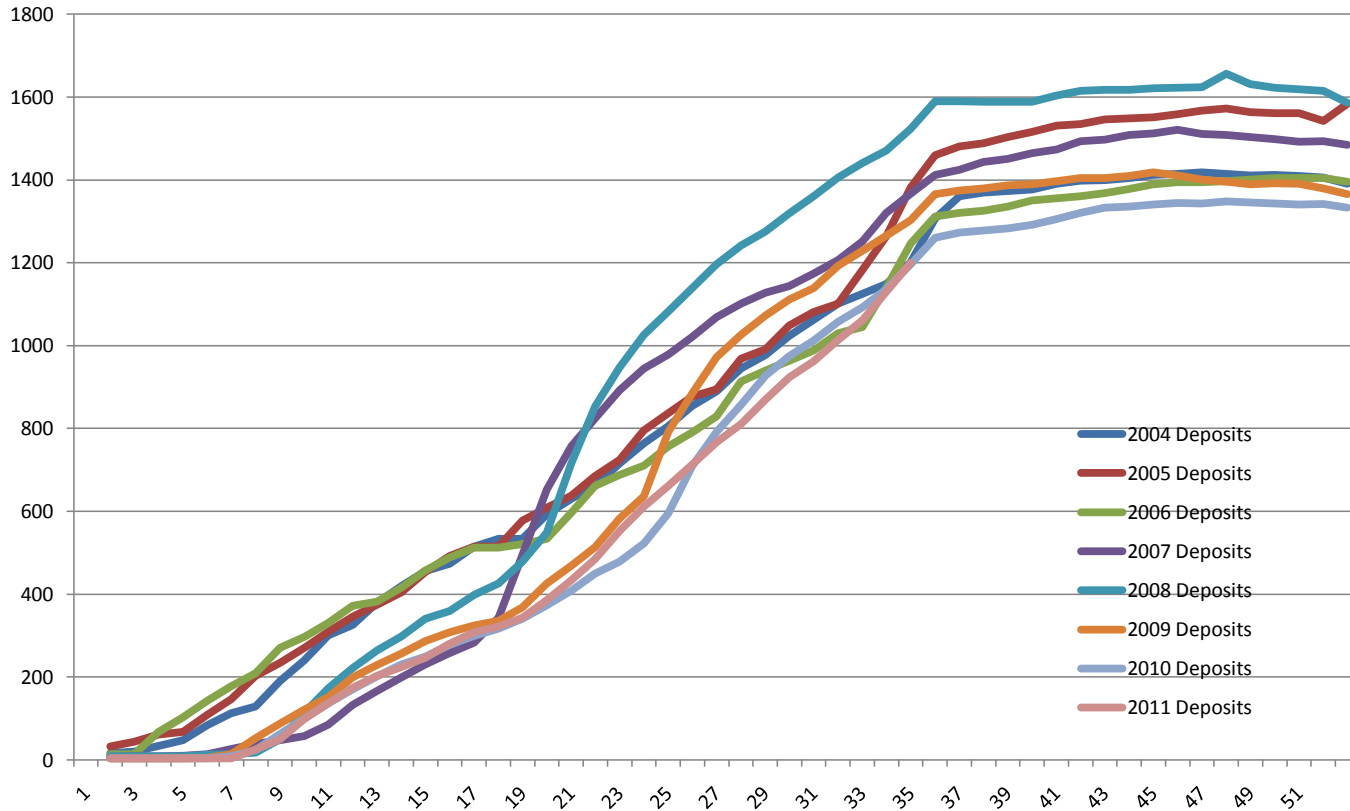
Total Applications



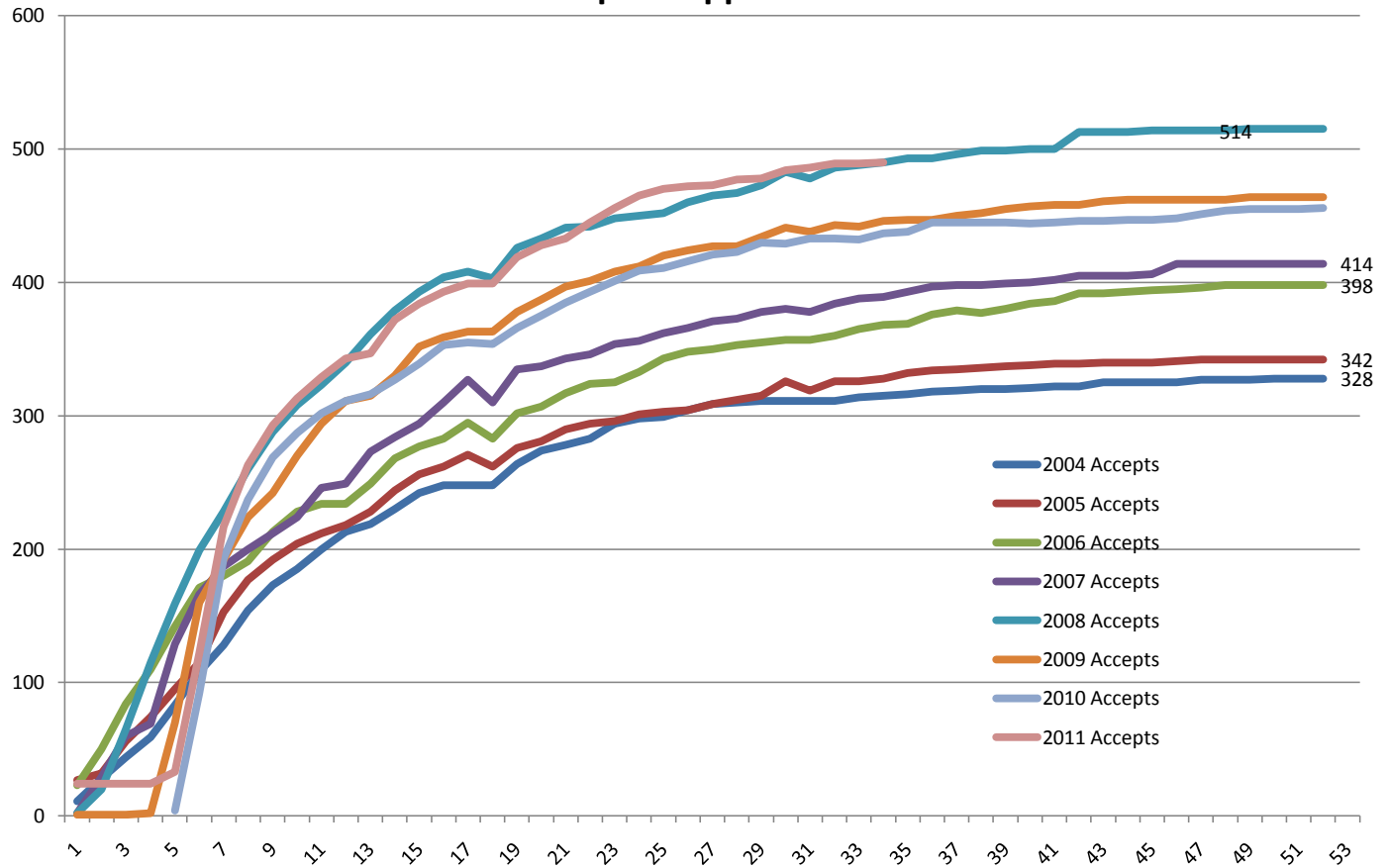
Accepted Applications



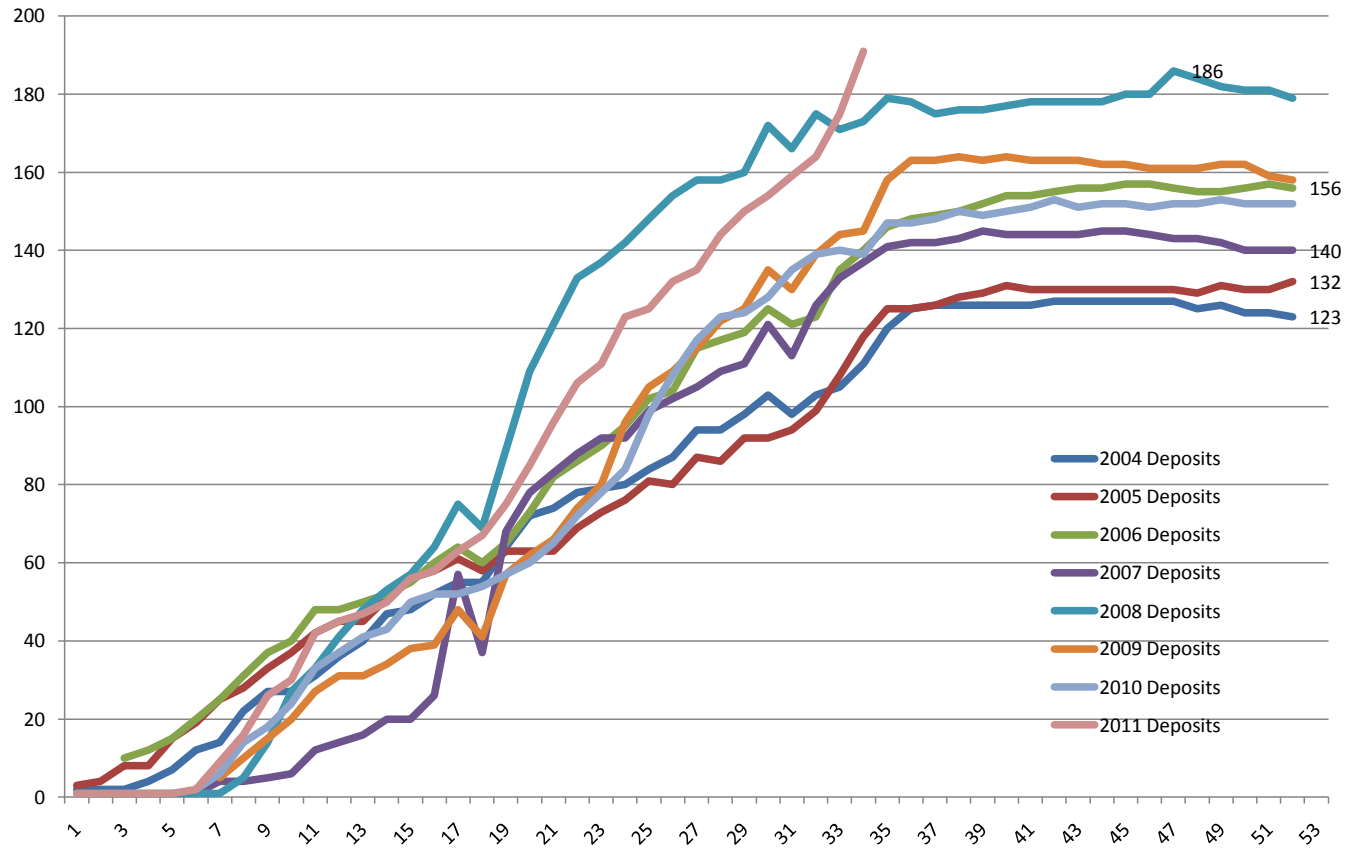
Enrollment Deposits



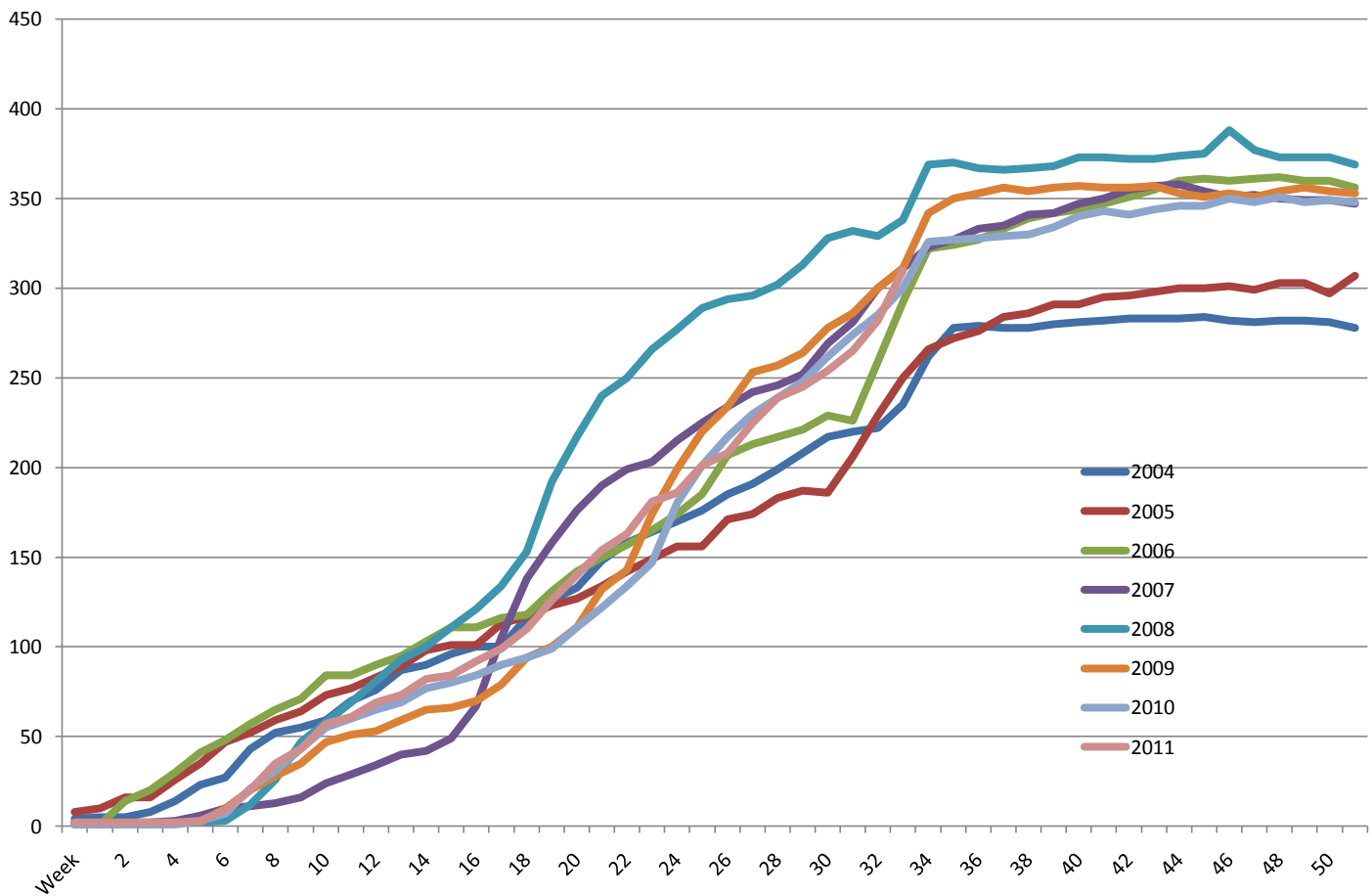
COE Female Accepted Applications



COE female deposits paid



Female Deposits Paid



MICHIGAN TECHNOLOGICAL UNIVERSITY
Generations of Discovery
Campaign Progress Summary
as of April 22, 2011

Alumni & Friends	\$ 96,516,502
Corporations	39,589,259
Private Foundations	2,526,475
Gifts-in-Kind	<u>5,031,981</u>
Grand Total	<u>\$143,664,217</u>

Michigan Technological University Generations of Discovery Campaign Breakdown

• Facilities	\$ 7.2M
• Scholarships/Fellowships	16.9M
• Chairs & Professorships	28.8M
• Depts. Program Support/Ops.	51.8M
• Research	<u>39.9M</u>
TOTAL	\$143.6M

Increase in Endowed Faculty Positions



Dr Ching-An Peng
James and Lorna Mack Endowed Chair
Chemical Engineering



Dr Dave Shonnard
Robbins Chair
Chemical Engineering



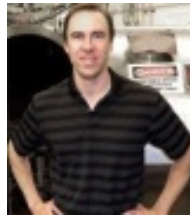
Dr Dan Fuhrmann
Dave House Endowed Professorship
Electrical and Computer Engineering



Dr Shuanglin Zhang
Henes Endowed Math Professorship
Mathematical Sciences



Dr Rolf Peterson
Robbins Chair
School of Forest Resources and
Environmental Sciences



Dr Brad King
Ronald and Elaine Starr
Assoc Professor in Space Systems



Dr Jeff Naber
Ronald and Elaine Starr
Assoc Professor in Energy Systems



Dr Jeff Allen
John & Joan Calder Assoc Professor
In Mechanical Engineering



Dr Tim Schulz
Dave House Endowed Professorship
Electrical and Computer Engineering



Dr Craig Friedrich
Robbins Chair
Mechanical Engineering - Engineering Mechanics



Dr Gordon Parker
John and Cathi Drake Endowed Professorship
Mechanical Engineering – Engineering Mechanics

Searching:
William and Gloria Jackson
Endowed Professorship in Electrical Engineering,
Computer Science, and Entrepreneurship

Rick and Jo Berquist Professorship in
Entrepreneurship and Innovation





Power of Philanthropy

Fifth Floor
EERC

Center for Computer Systems Research

Power of Philanthropy

Fifth Floor
EERC



Center for Computer Systems Research

Michigan Tech

Create the Future

Power of Philanthropy

A.E. Seaman Mineral Museum



Power of Philanthropy



Humanities Digital Media Zone



Power of Philanthropy

Career Center



(Your Name Here)
Great Lakes
Research Center

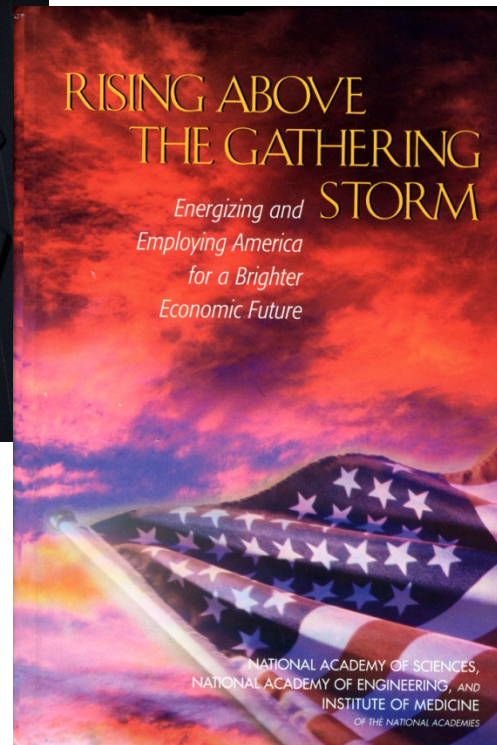


Task Forces/Working Groups

- Incentive Return Task Force - Completed
- Lactation Center - In Process
- MUB Basement Working Group- Completed
- New Faculty Start-up Task Force- Completed
- Data Standards Group- Completed
- Parking Task Force- Completed
- Tobacco Review Working Group – Completed
- AQIP Projects- On going



Commencement Speaker Norman R. Augustine



QUESTIONS