



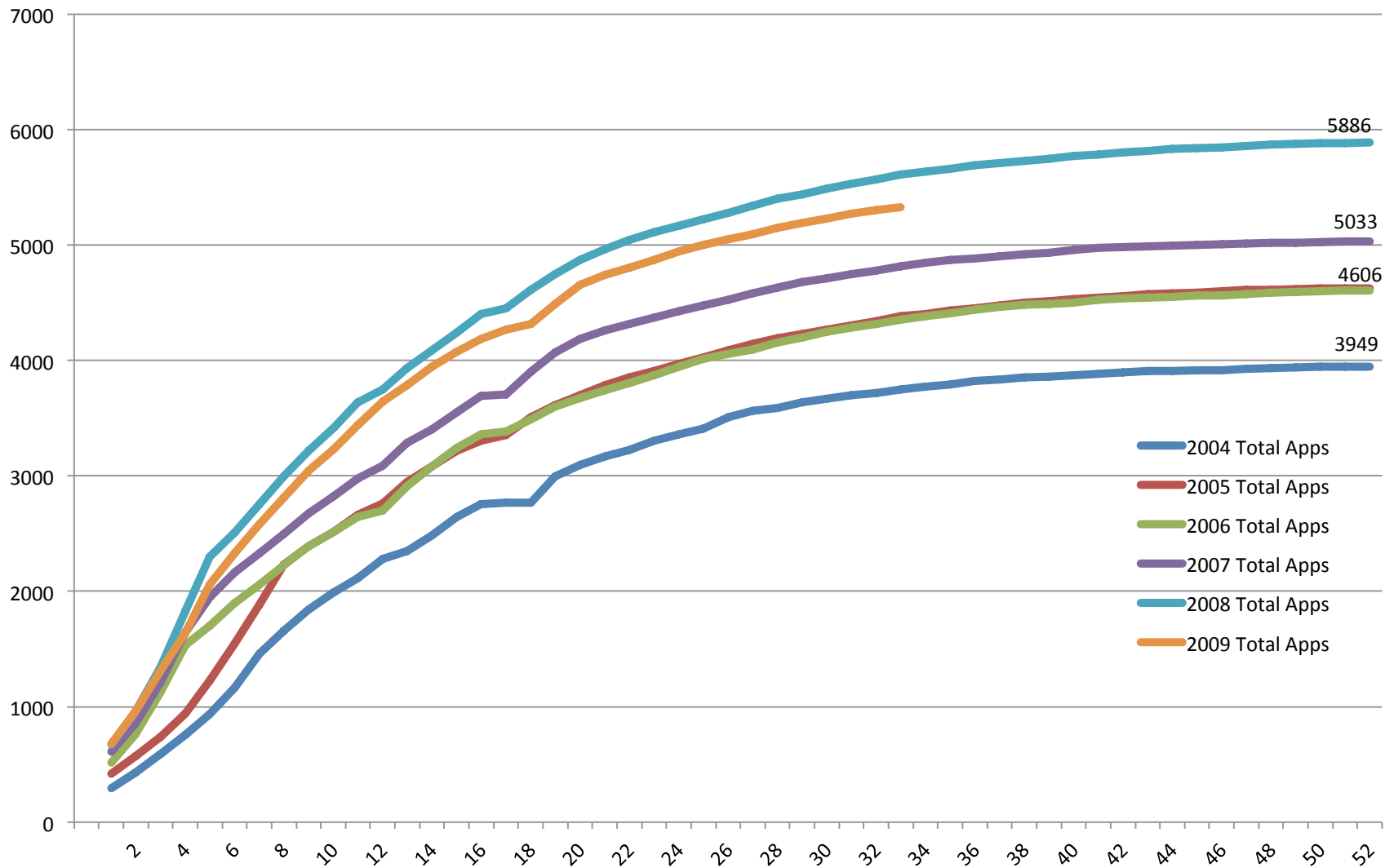
CAMPUS FORUM

April 23, 2009

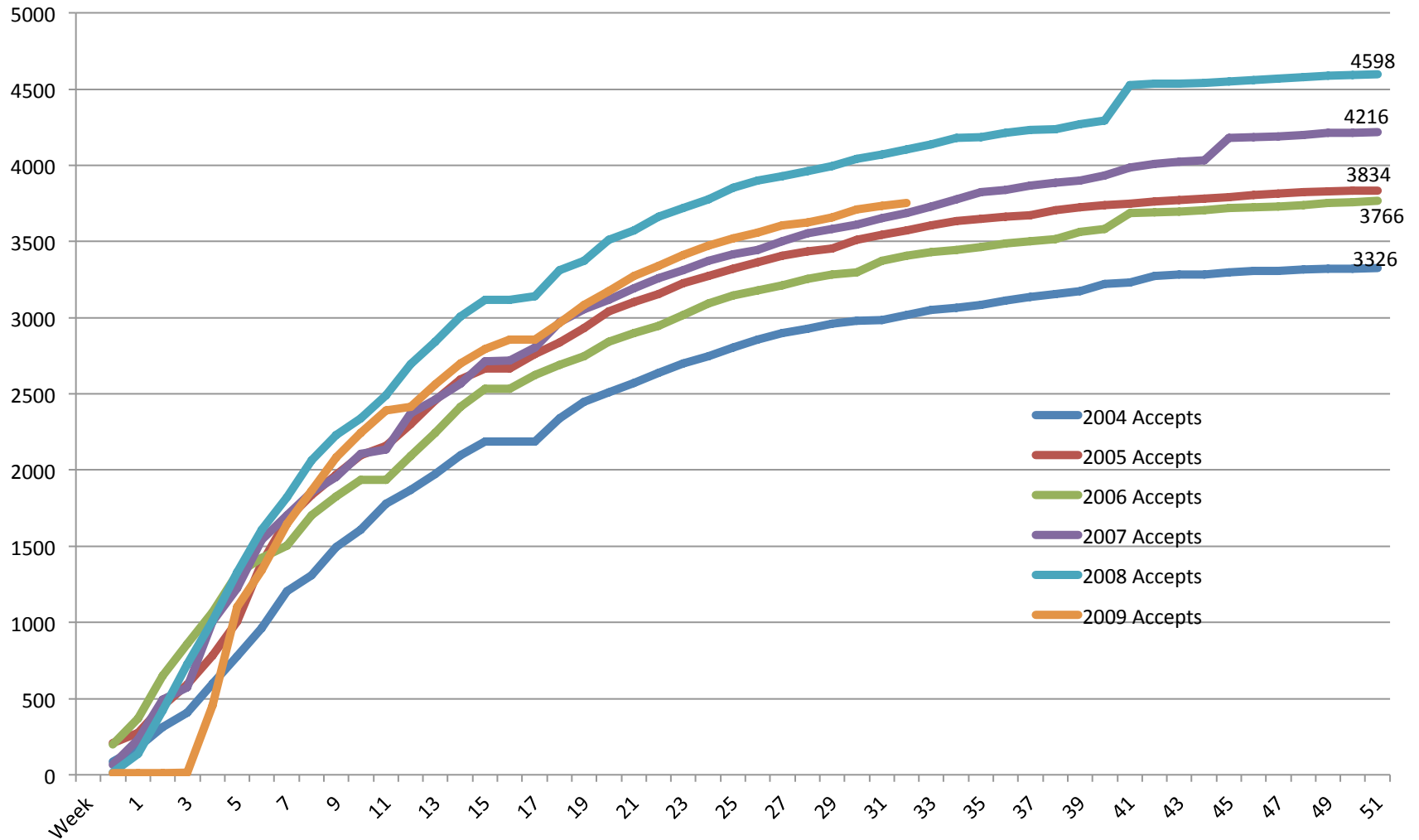


ENROLLMENT TRENDS

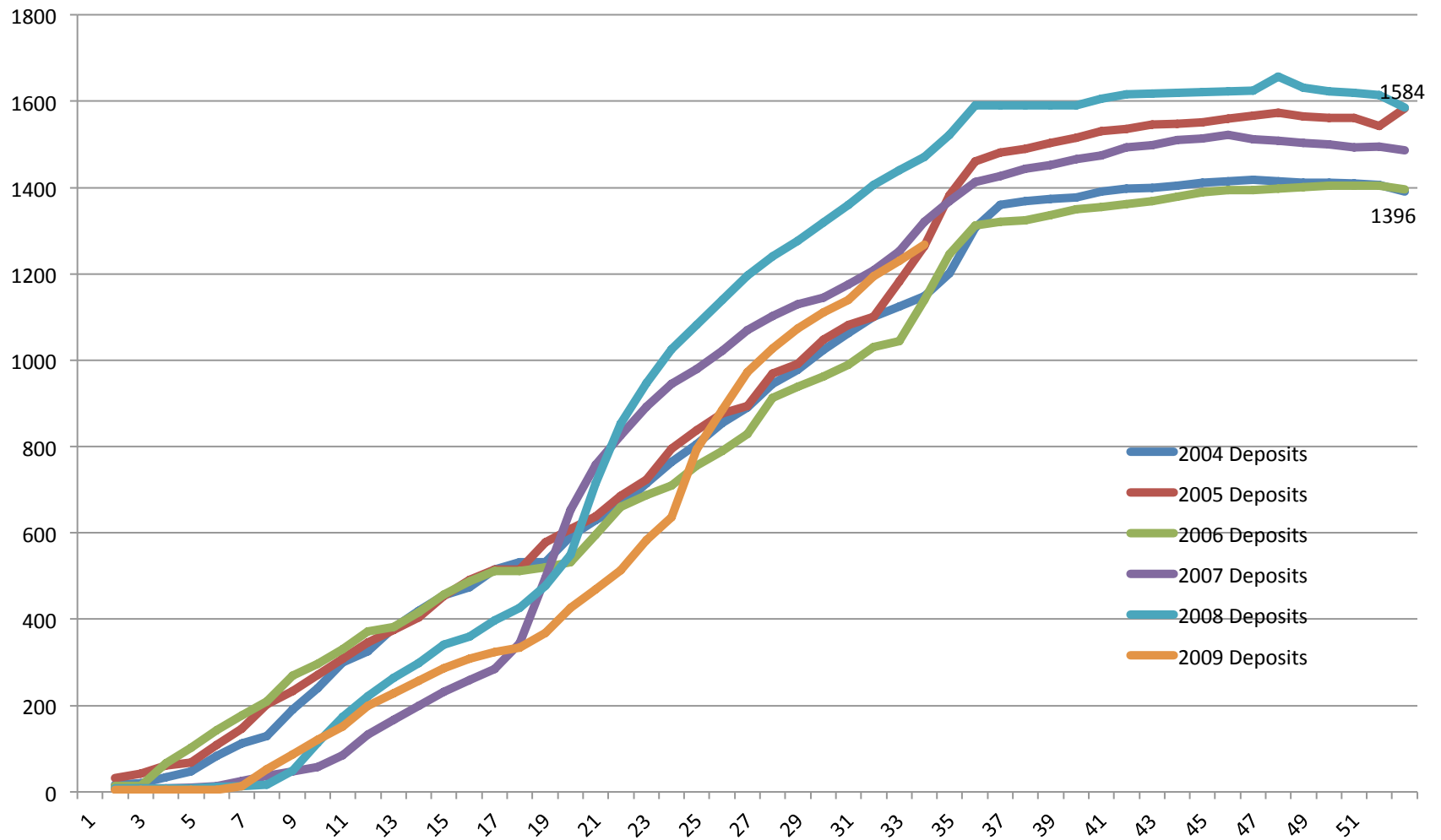
Total Undergraduate Applications



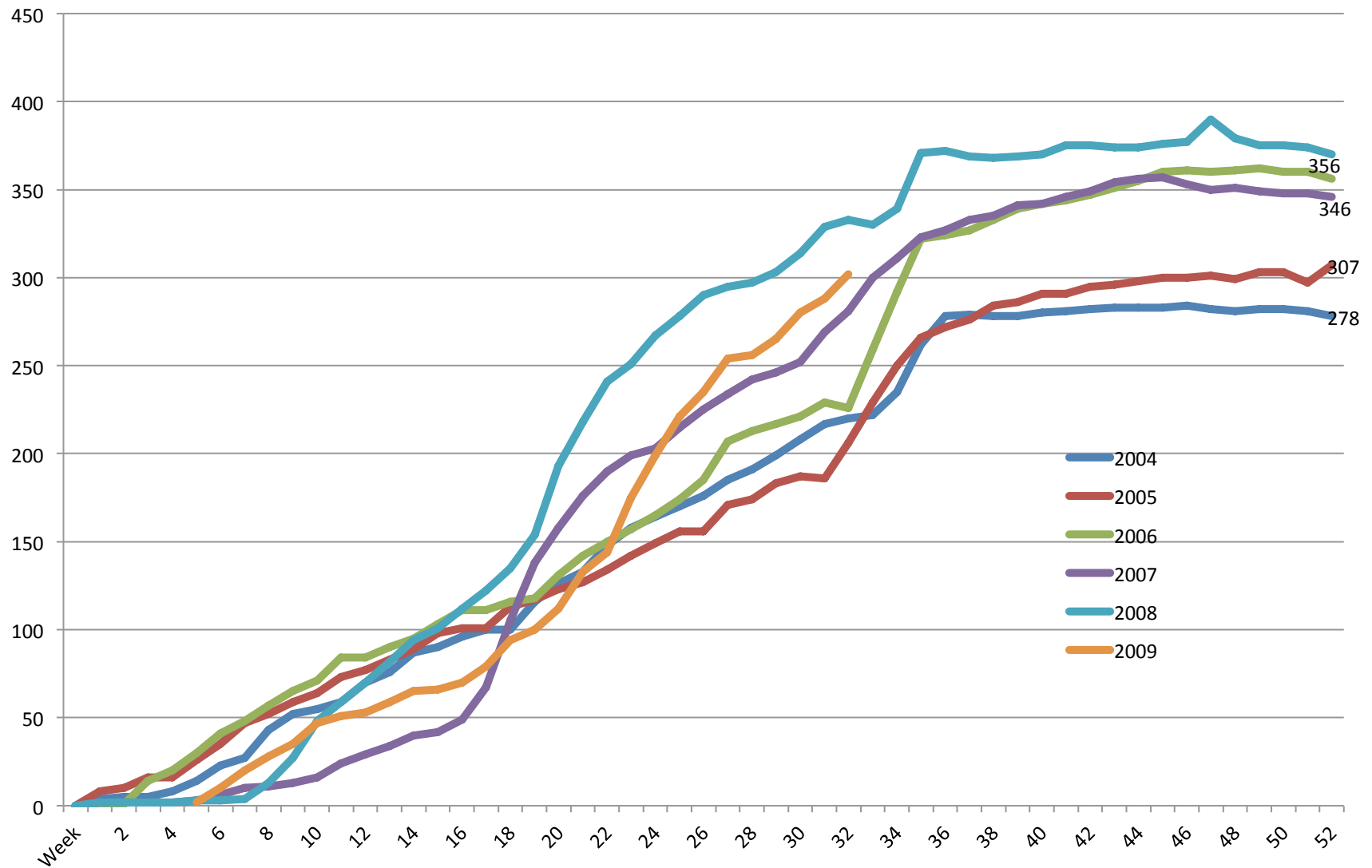
Accepted Applications



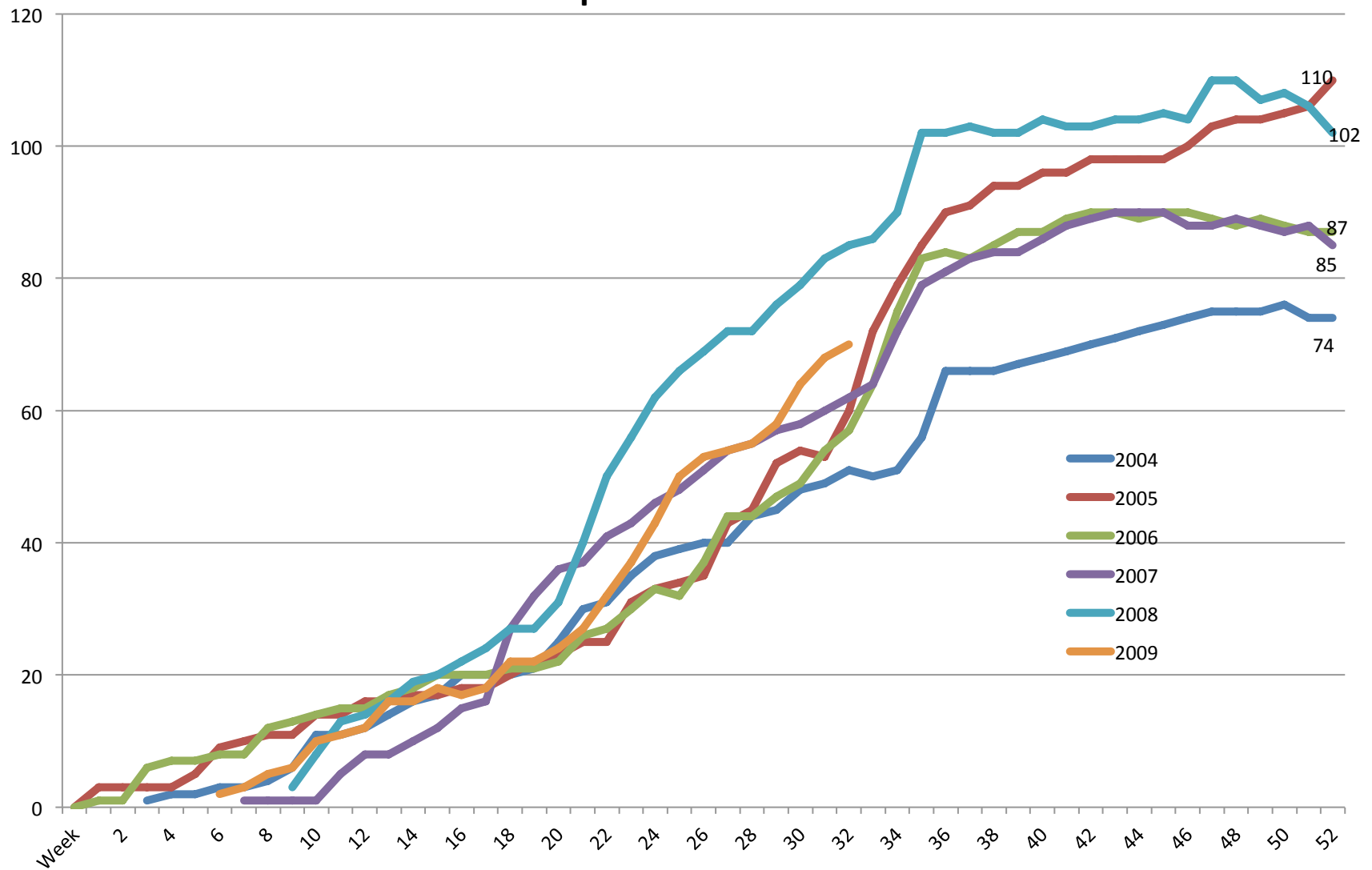
Enrollment Deposits



Female Deposit Paid



Domestic Minority Deposits Paid





Enrollment Projection for Fall 2009

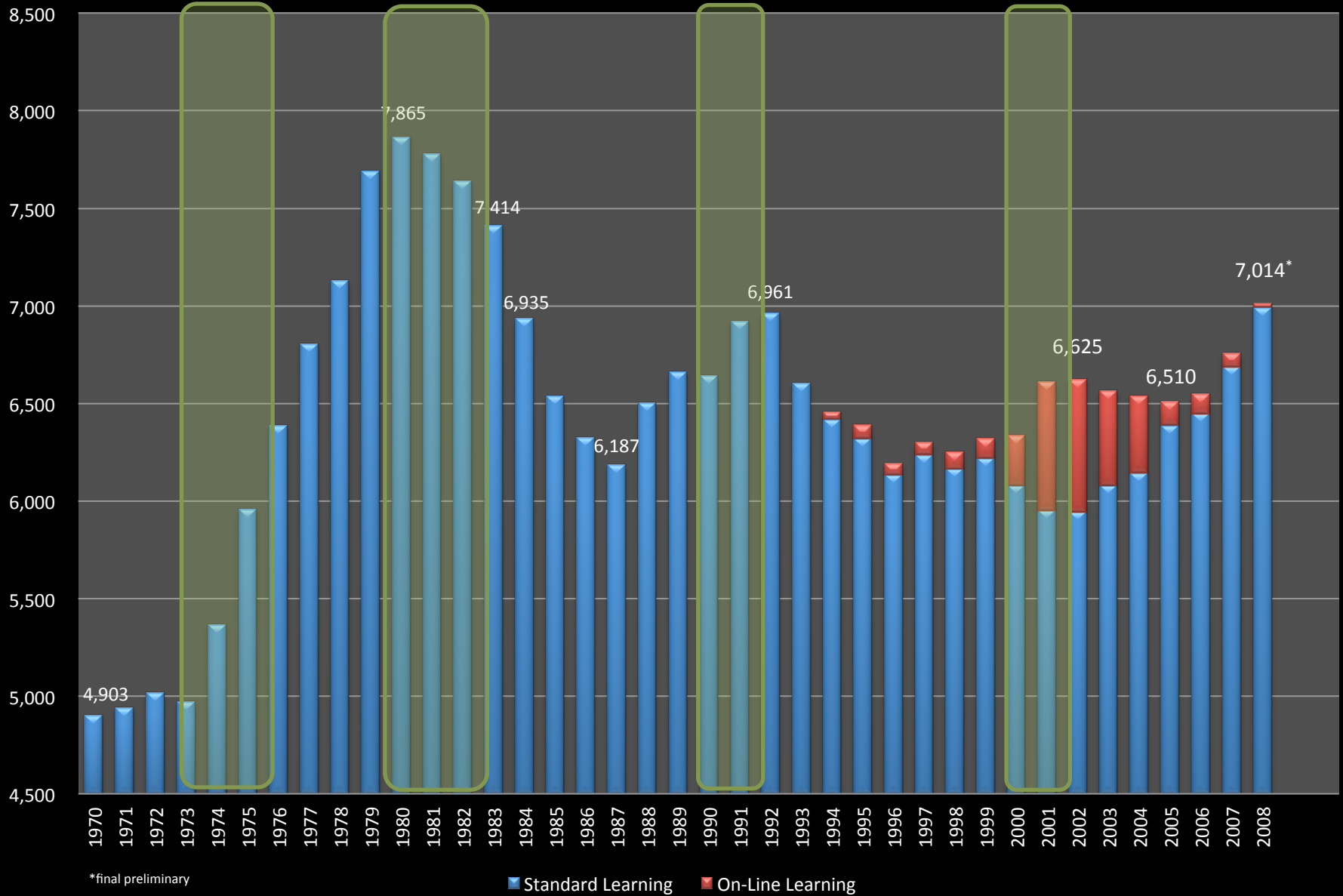
Total Students	6912
----------------	------

New Students - (High)	1608
-----------------------	------

(Likely)	1438
----------	------

(Low)	1375
-------	------

Michigan Tech Fall Enrollment History 1970-2008



BUDGET



**GENERAL FUND AND CURRENT FUND
FY09 Condensed Income Statement Projection**
(in Thousands)

	<u>General Fund</u>	<u>Current Fund</u>
Total Operating Revenue	\$ 96,739	\$ 167,599
Total Operating Expense	(131,926)	(222,025)
Transfers Out	(16,086)	(6,030)
Total Nonoperating Revenue	<u>49,801</u>	<u>59,461</u>
Net Income (Loss)	<u>\$ (1,472)</u>	<u>\$ (995)</u>
Ending Fund Balance	<u>\$ (11,111)</u>	<u>\$ 14,420</u>

Note: Current Fund includes General Fund, Designated Fund, Auxiliaries, Retirement and Insurance, and the Expendable Restricted Funds.



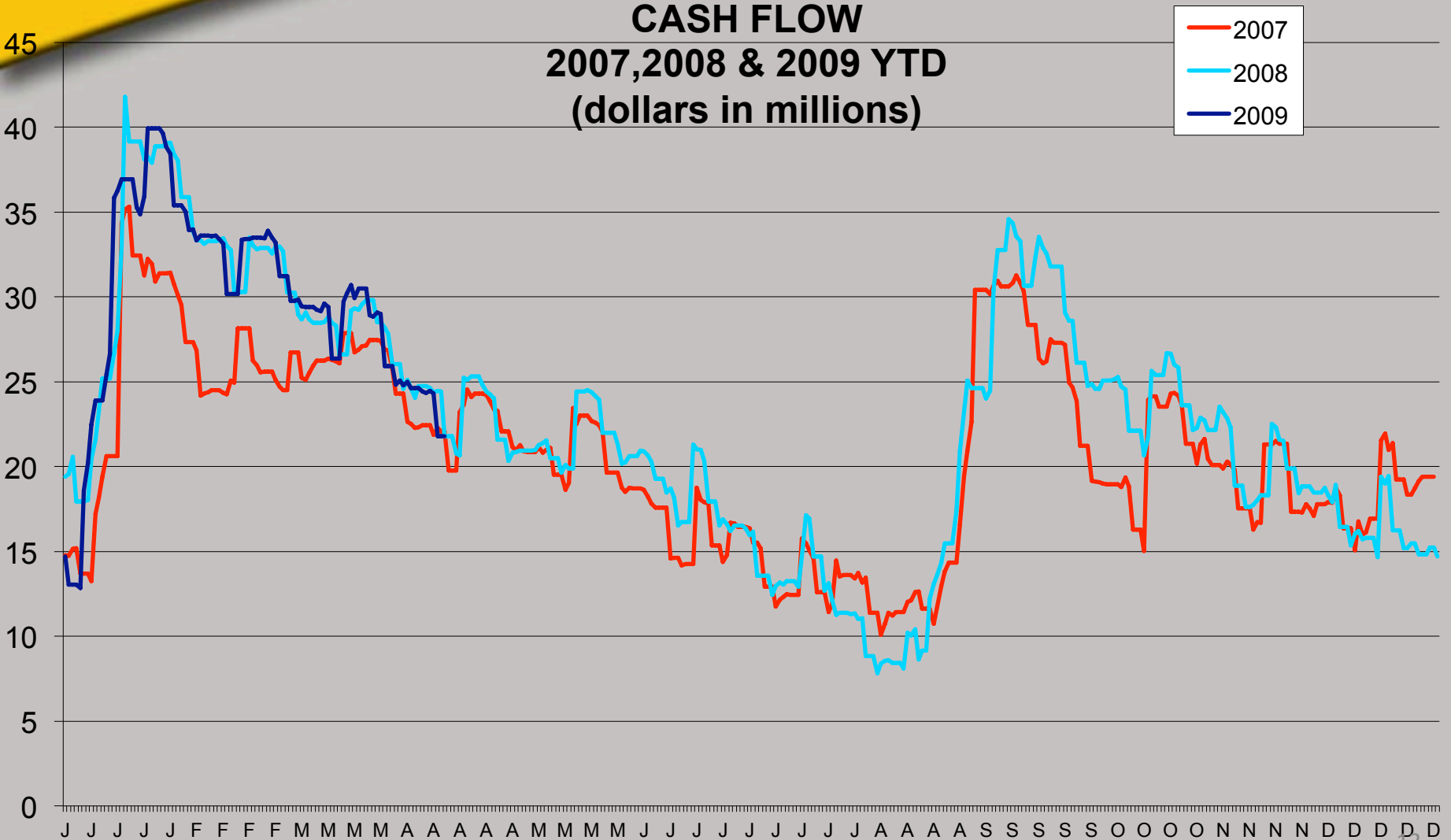
CURRENT FUND

(in Thousands)

	<u>Original Projection</u>	<u>Projected Year End (As of 3/31/09)</u>
Revenue	\$ 232,008	\$ 229,020
Expense	(231,536)	(228,055)
Investment Gains (losses)	<u>550</u>	<u>(1,960)</u>
Net	<u>\$ 1,022</u>	<u>\$ (995)</u>

Michigan Tech

CASH FLOW 2007, 2008 & 2009 YTD (dollars in millions)



American Recovery & Reinvestment Act

Federal

- Student Financial Aid
- Scientific Research

State

- Budget Stabilization



Federal Student Financial Aid

Pell Grants	\$17B
American Opportunity Tax Credit	\$15B
Work Study	\$200M
Non Stimulus – GI Bill	\$60B/5 years

Federal Scientific Research Increases

NIH	\$10.4B
NSF	\$ 3.0B
DOE	\$ 4.8B
NASA	\$ 0.55B

“State” Fiscal Stabilization Funds

- \$48.6B to governors to help stabilize state and local budgets to avoid education reductions.
- State commitment to advance education reform.

MichiganTech

- Education Stabilization Fund – 81.8%
 - Restore support to K-12, Public Higher Education, Early Childhood Services.
 - Michigan Share Estimate - \$1.3B.
- Government Services Fund – 18.2%
 - Public Safety, Other Government Services including Education.
 - Michigan Share Estimate - \$289.8M

State Fiscal Stabilization Fund Uses

- Restore state support to education to greater of 2008 or 2009 level for each of 2009, 2010, 2011 (cannot go below 2006 level).

- If there are dollars remaining
 - K-12
 - Modernization, Renovation, Repairs
 - Mitigate Tuition Increases, etc.



State Fiscal Stabilization Funds at Michigan Tech

-Increase?

-Backfill?



CAPITAL IMPROVEMENTS



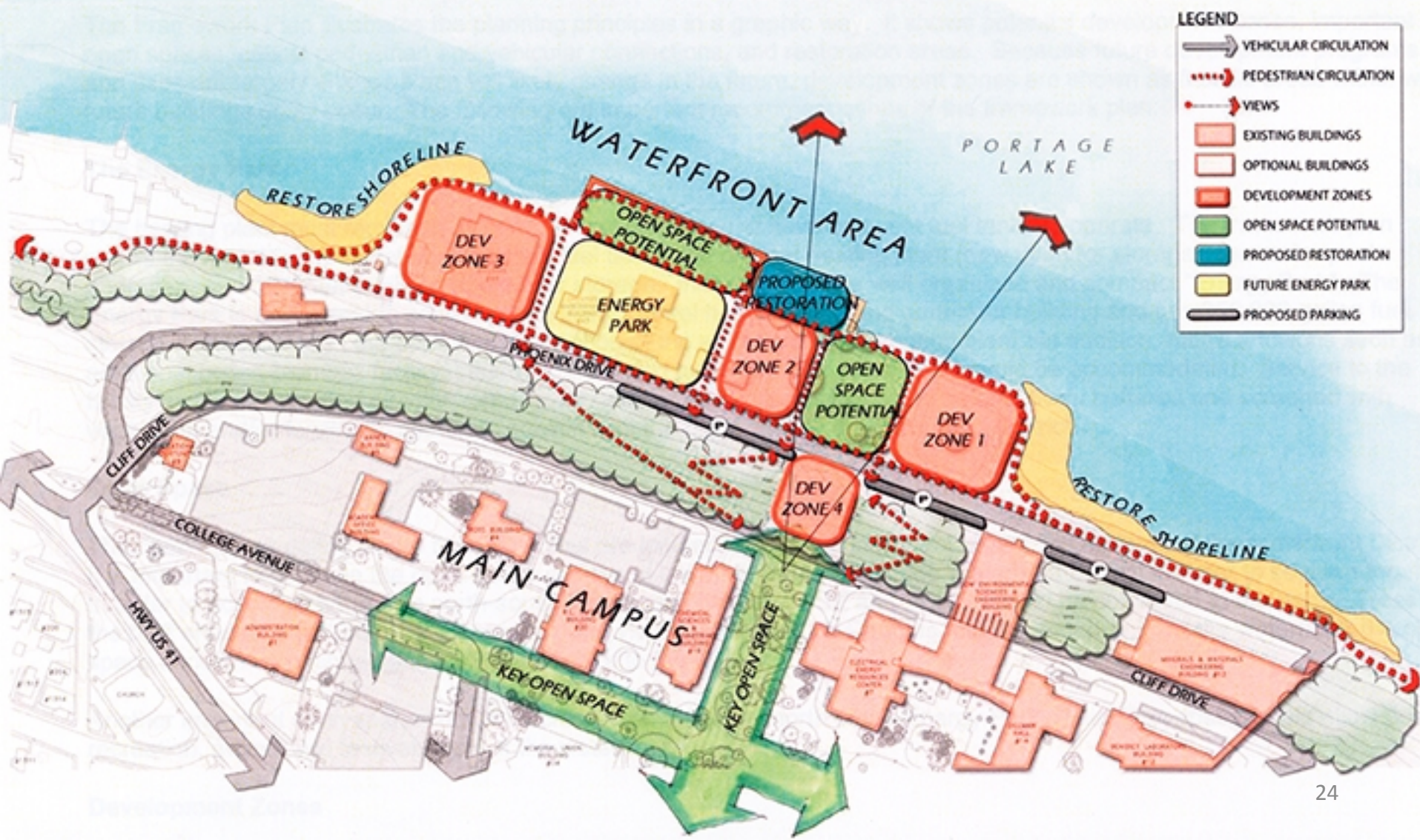
RESIDENTIAL APARTMENTS - Preliminary Design

Waterfront Master Planning Committee

- Marty Auer
- Charles Kerfoot
- Mary Marchaterre
- Alex Mayer
- William Predebon
- Suzanne Sanregret
- Jared Johnson
- Bryant Weathers

Ex-officio: Jim Heikkinen and Gregg Richards

Michigan Tech





Great Lakes Research Center

- Planning Committee

- Bill Predebon, Chair
- Marty Auer
- Sarah Green
- Charles Kerfoot
- Alex Mayer
- Walt Milligan

Ex-officio: Jim Heikkinen and Gregg Richards

MichiganTech

- ❖ Great Lakes Research Center
- ❖ Residential Apartment Building
- ❖ Keweenaw Research Center (KRC)
- ❖ MacInnes Student Ice Arena Renovations
- ❖ Physics Labs – Design Phase
- ❖ ME-EM Safety Measures
- ❖ US41 Reconstruction
- ❖ Michigan Tech Lakeshore Center (UPPCO) – Design Phase
- ❖ Rozsa Art Gallery

AQIP and LEAN



AQIP Systems Portfolio

- Helping Students Learn
- Accomplishing Other Distinctive Objectives
- Understanding Students' and Other Stakeholder's Needs
- Valuing People
- Leading and Communicating
- Supporting Institutional Operations
- Measuring Effectiveness
- Planning Continuous Improvement
- Building Collaborative Relationships

Current AQIP Projects

- International Experience
- Academic Advising

LEAN

Quality Improvement

- Catering/Ordering Process
- Recipe/Order Taking Consistency
- Room Setup and Cleanliness Standards
- Process for Training New Catering Students
- RSP's Internal Processing of Modifications
- Financial Close-out of Sponsored Projects
- Probationary Period Process
- Student Status Change Form
- Production Flow in Residential Dining
- Cash Accounting
- UAW Job Posting Standardization



STRATEGIC PLAN

Tune Up

Strategic Plan Update

- Draft Guiding Principles (Radson, Schulz and Walck). (Complete)
- Deans Review (January)
- Executive Team Direct Reports Review
- Executive Team Review (March)
- Public Focus Groups (close May 1)
- Deans and Executive Team Review Again
- Final Approval (July Board meeting)



Strategic Plan Website

<http://www.mtu.edu/stratcomment/>

STRATEGIC FACULTY HIRING INITIATIVE

THEME: Computational Discovery and Innovation

- Interviews are still taking place



2010 STRATEGIC FACULTY HIRING INITIATIVE

THEMES: Health and Energy

New Faces

- Thy Yang, Director of International Programs
- K. Michael Gibson, Chair, Biological Sciences
- Ronald Strickland, Chair, Humanities
- Joe Herbig, Controller
- Offer Pending, Director of Public Safety

SEARCHES

- ❖ 50 Faculty Members
- ❖ Provost



CAMPAIGN UPDATE



MICHIGAN TECHNOLOGICAL UNIVERSITY

Generations of Discovery

Campaign Productivity Totals as of March 31, 2009

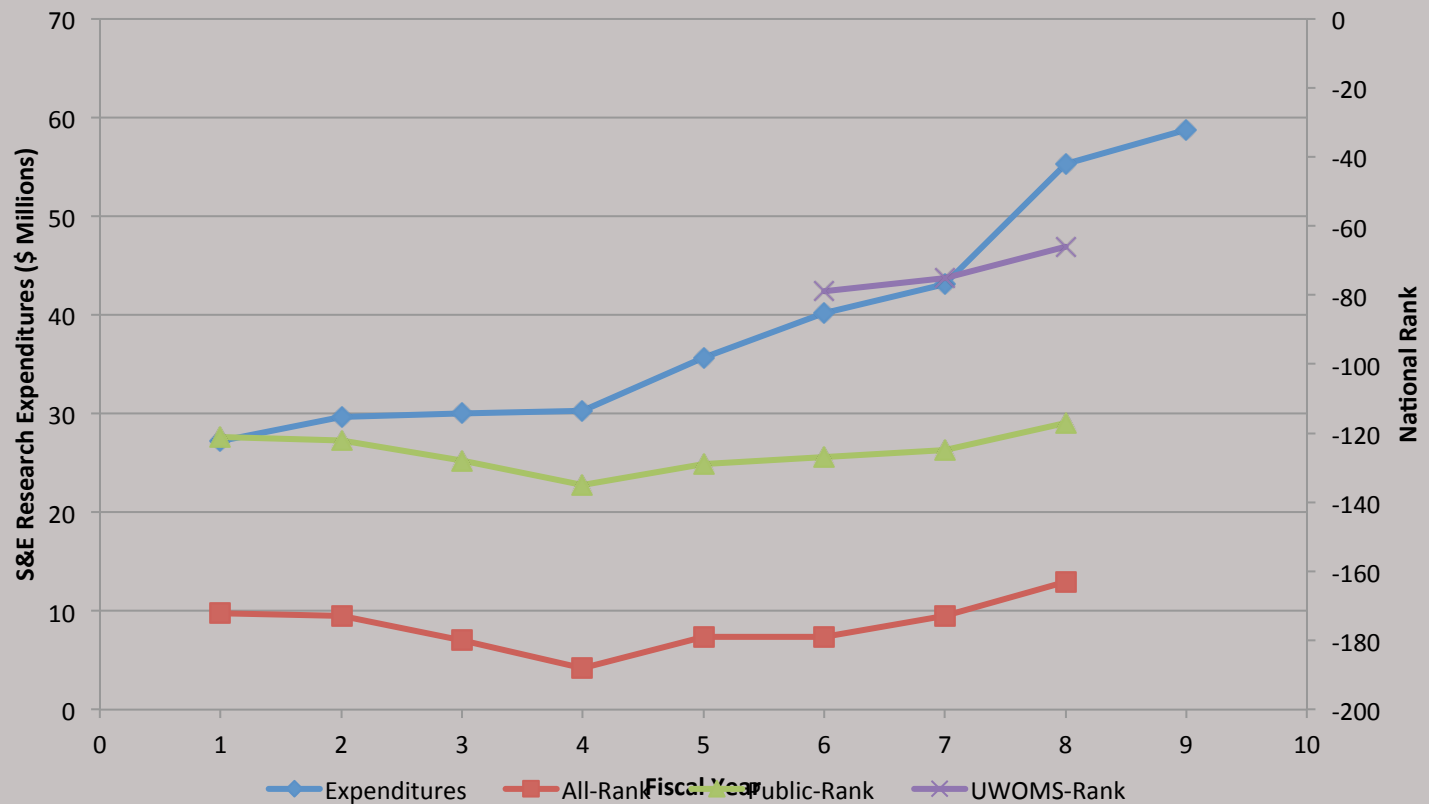
Alumni & Friends	\$ 67,860,066
Corporations	23,442,399
Private Foundations	2,023,070
Gifts-in-Kind	<u>4,172,864</u>
Grand Total	<u><u>\$ 97,498,399</u></u>

RESEARCH

2007 NSF National Ranking

- 66th among institutions without medical schools
- Now 117th among public institutions
- 163rd in total research expenditures
- Mechanical Engineering now 22nd
- Visual and Performing Arts now 72nd
- Mathematics now 75th
- Humanities now 78th

NSF National Rank



QUESTIONS