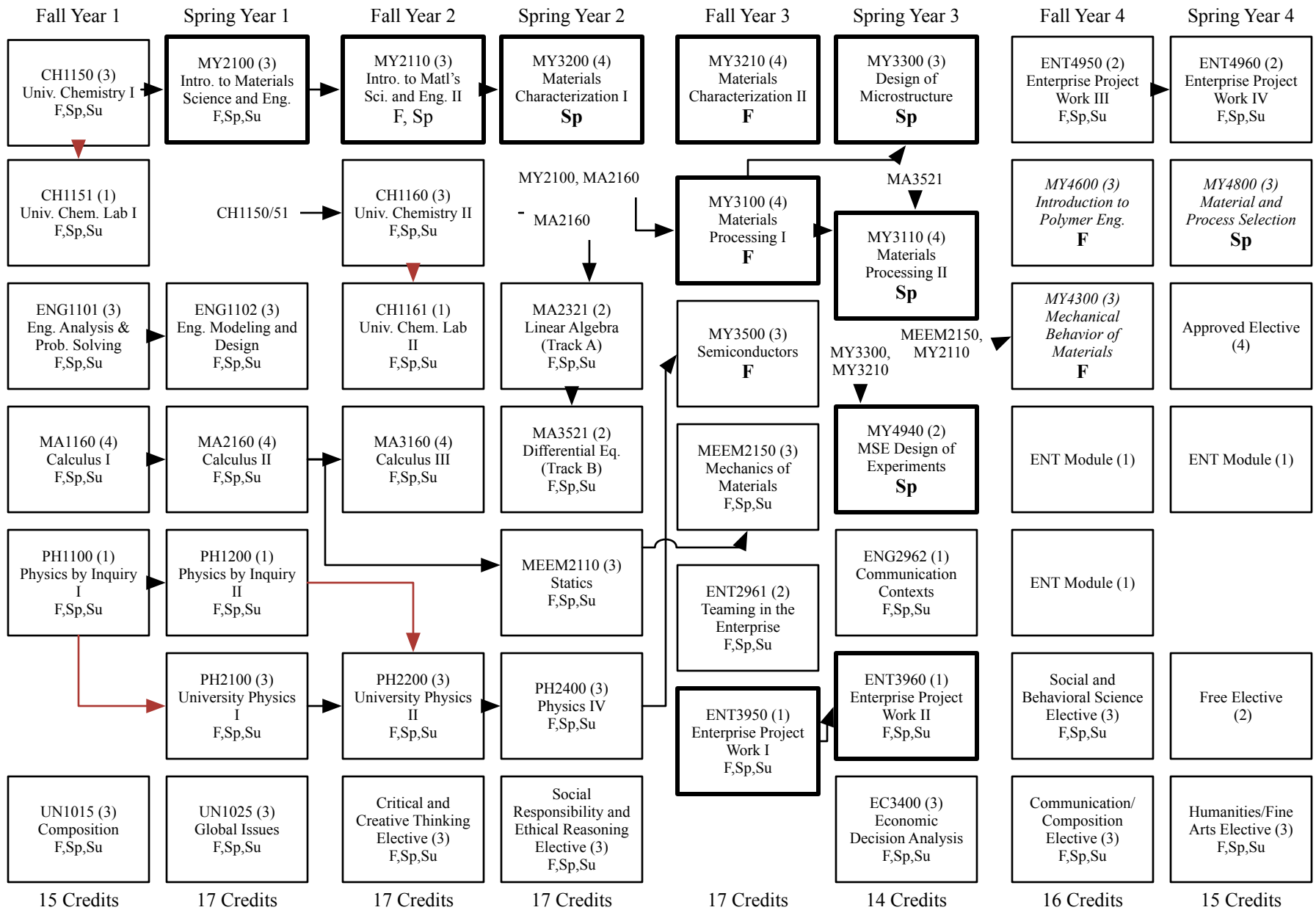


# 2016-2017 B.S. in Materials Science and Engineering Enterprise Concentration Flow Chart



131 credits required (128 shown). Students must complete 3 credits of Co-Curricular activities

Black arrows represent prerequisites, red arrows represent concurrent prerequisites

Approved Electives are courses in Science Engineering or Mathematics at 3xxx level or higher

Courses with dark outline (e.g. MY3210) are required to be "Senior Design Ready" (All are prerequisites for ENT4950)

*Italicized* courses have MY2100 as a prerequisite