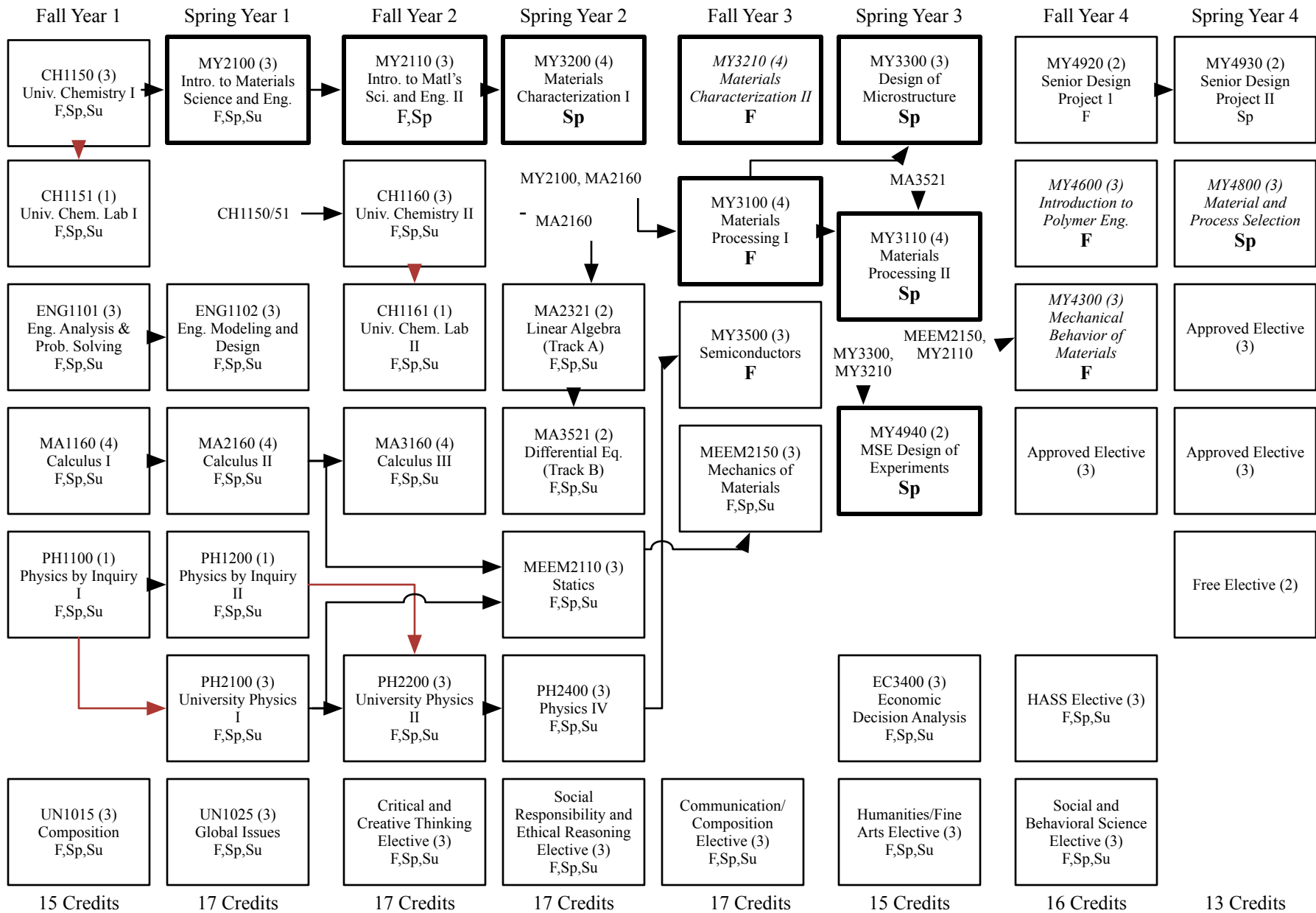


# 2015-2016 B.S. in Materials Science and Engineering Flow Chart



131 credits required (128 shown). Students must complete 3 credits of Co-Curricular activities

Black arrows represent prerequisites, red arrows represent concurrent prerequisites

Approved Electives are courses in Science Engineering or Mathematics at 3xxx level or higher

Courses with dark outline (e.g. MY3210) are required to be "Senior Design Ready" (All are prerequisites for MY4920)

*Italicized* courses have MY2100 as a prerequisite

Students must take at least 6 credits of General Education (HASS) at 3xxx+ level in addition to EC3400

