

BSE with Mining Engineering 2017/18

Updated May 2017

This is not an official list of degree requirements. Adjustments may be required due to curriculum changes.

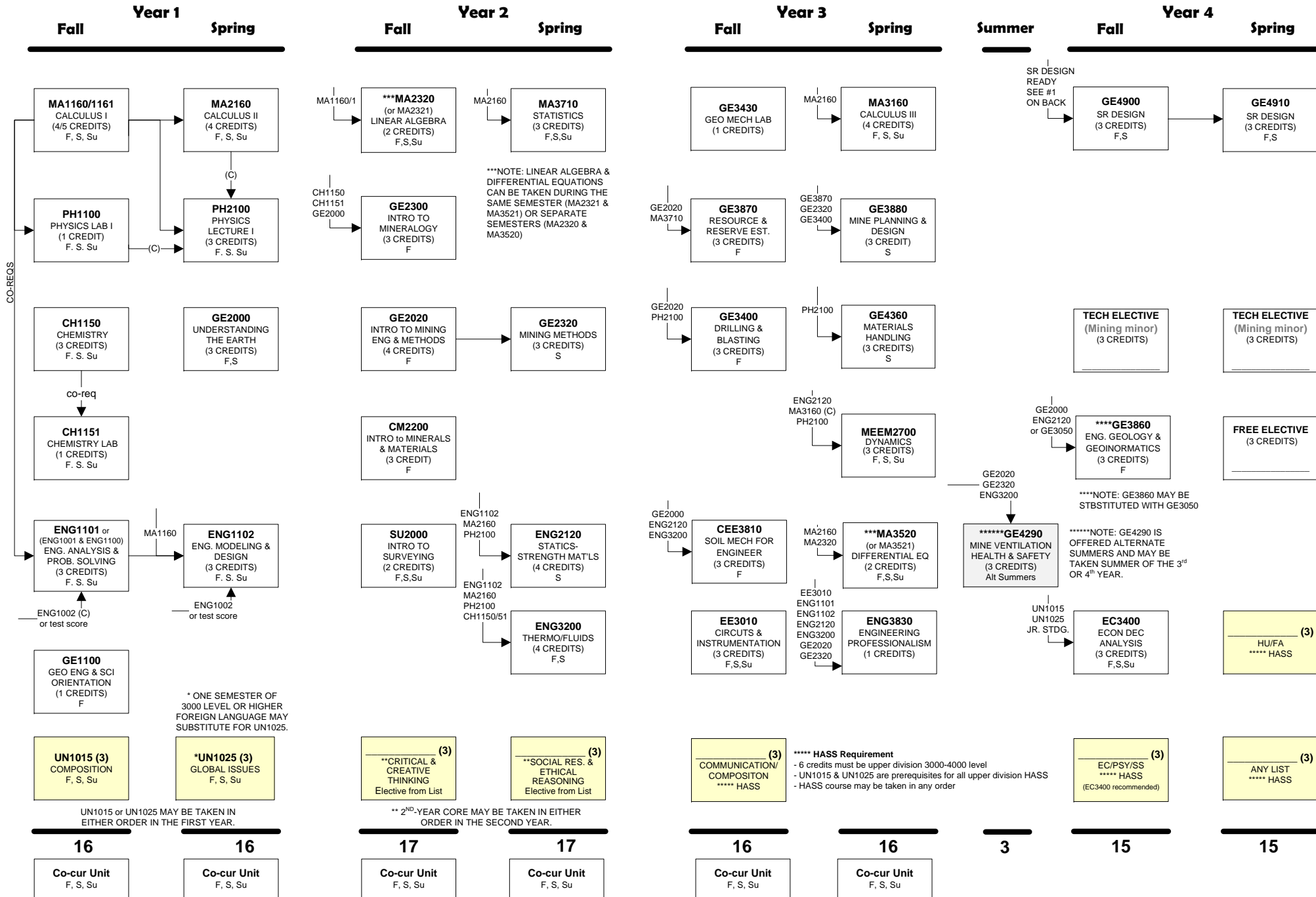
See back of academic plan for more information on requirements for elective courses.

KEY

XX### = Prerequisite
 XX### (C) = prereq that can be taken concurrently

XX### (cr)
 NAME
 Semester Offered

F = Fall
 S = Spring
 Su = Summer



**Mining Engineering Emphasis 2017-18
(minimum of 131 credits)**

Career questions: E-mail jsgierke@mtu.edu

Academic questions: E-mail efadvise@mtu.edu

- 1 Senior Design Ready:
 - a. **Senior Design Prerequisite courses:**
EE3010, ENG1101, ENG1102, ENG2120, ENG3200, ENG3830, GE2020, GE2320.
 - b. **Core Competency Check test** - Take and pass the test; test topics include all ENG4905 prerequisite courses except ENG3830 & GE2020.
- 2 See table below for General Education Requirements:

General Education Requirements

I. Core Courses (12 credits)

- ___ UN1015 Composition
- ___ UN1025 Global Issues or 3000+ Modern Language _____
- ___ Critical/Creative Think List _____
- ___ Social Resp./Ethical Reason List _____

II. HASS Courses Requirements (12 credits)

(www.admin.mtu.edu/em/documents/HASS Distribution List.pdf)

- 6 credits 3000- or 4000- level
- 3 credits from each listed below

- ___ Communication/Composition _____
- ___ Humanities/Fine Arts List (HU/FA) _____
- ___ Social & Behavioral Science List (EC/PSY/SS) _____
- ___ 3 credits from any list _____

* **EC2001** is recommended for students considering an MBA at MTU.

** **EC3400** is required by the degree and may **NOT** be counted as a HASS.

III. Co-curricular activities (3 units)

In the co-curricular requirement, the three semester units will be physical education activities. These units are required for graduation, but are not included in the calculation of the GPA, nor in the overall degree-credit requirement. Note: most physical education activities will last for 7 ½ weeks or ½ semester. A student would need **six** of these ½-semester units to fulfill the 3-semester unit co-curricular requirement.

- PE _____ PE _____ PE _____
- PE _____ PE _____ PE _____

3. Mining Minor Requirements:

Minor in Mining
EMGM

Department of Geological and Mining Engineering and Sciences*

Required Course (3 credits)

- GE2020** Intro to Mining Engineering and Mining Methods (3)

Elective Courses – Select at least (9 credits)

- GE3400** Drilling and Blasting (3)
- GE3860** Engineering Geology & Geoinformatics (3)
- GE3870** Resource and Reserve Estimation (3)
- GE3880** Mine Planning and Design (3)
- GE4290** Mine Ventilation, Health, and Safety Engineering (3)
- GE4360** Materials Handling (3)
- ___ **GE4680** Operations Research for Mining Engineers (3)
- ___ **GE4690** Discrete Event Simulation and Animation for Engineers (3)

Additional Electives – (0-6 credits)**

- ___ **GE** _____ (3)
- ___ **GE** _____ (3)

* Students must consult with a departmental advisor to select any sequence of upper-division courses from Geological and Mining Engineering Department. Students are responsible for satisfying all prerequisites.

** Additional minor requirements may be fulfilled using Technical Electives or Free Electives.