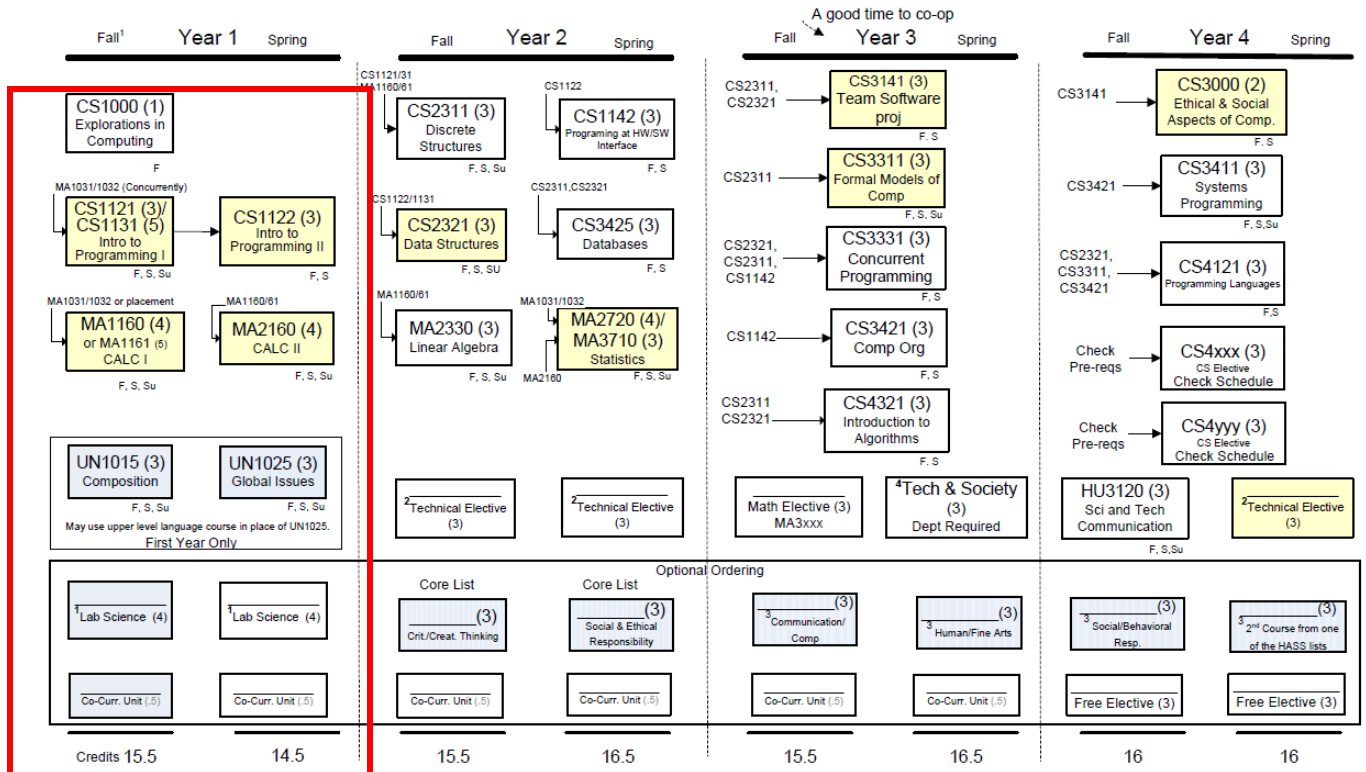


This Flowchart is meant as a guide only, any questions about scheduling should be brought up with your academic advisor.



1) Lab Science Courses: Need 8 total credits, two different disciplines (BL,CH,FW,GE,PH, etc), one course must include course & lab. Pick courses off the Science Course list from the Gen Ed STEM list.
2) Technical Electives: List available on CS advising site
3) HASS (Humanities & Fine Arts, Social & Behavioral Sciences) electives: 6 credits must be upper division 3000-4000 level - UN1015 and UN1025 are prerequisites for all upper division HASS courses.
4) Tech & Society: Select one of the following: SS3510, SS3511, SS3520, SS 3530, SS3630, SS3800, SS3801, SS3820, HU3701, MA4945

Undergraduate advisor: Rekhi 221/227 Email:csadvisor@mtu.edu Sarah Kuhl

Prerequisite Course → Yellow boxes are Major Specific courses Blue Boxes are General Education Courses

Total 123 plus 3 units co-curricular activities

One plus Three Academic Plan for Transfer Students

B.S. in Computer Science

We encourage students pursuing a computer science degree to transfer to MTU after 1 year to ensure a four year graduation.

If you follow the plan above in red, you will be on track for a 4 year graduation.

- You should transfer in CS Intro to programming 1 & 2 equivalents, Calculus 1, UN1015 Composition and UN1025 Global Issues to be on track for graduation.
- Lab science, Core SBS, Core HUFA, HASS Elective, MA Elective, MA2160, MA2720 and MA2330 can be taken in any order.

Link to the most recent Computer Science Flowchart [HERE](#)

**a 3000-level or higher modern language course may be used in place of UN 1025 Global Issues.

This is not an official list of degree requirements. Adjustments may be required due to curriculum changes.

If no transfer credit for CS1121 & CS1122, but you have programming experience this could be an option for you: CS1131 Accelerated Introduction to Programming, Information [HERE](#). CS1131 is a 5 credit fall only course that covers CS1121 and CS1122 material in one semester. Students must pass a knowledge assessment to take this course.

Please have your transfer courses evaluated PRIOR to taking them to ensure they transfer to MTU.

Contact Transfer Services at transfer@mtu.edu

Contact the advisor for help planning your courses; csadvisor@mtu.edu