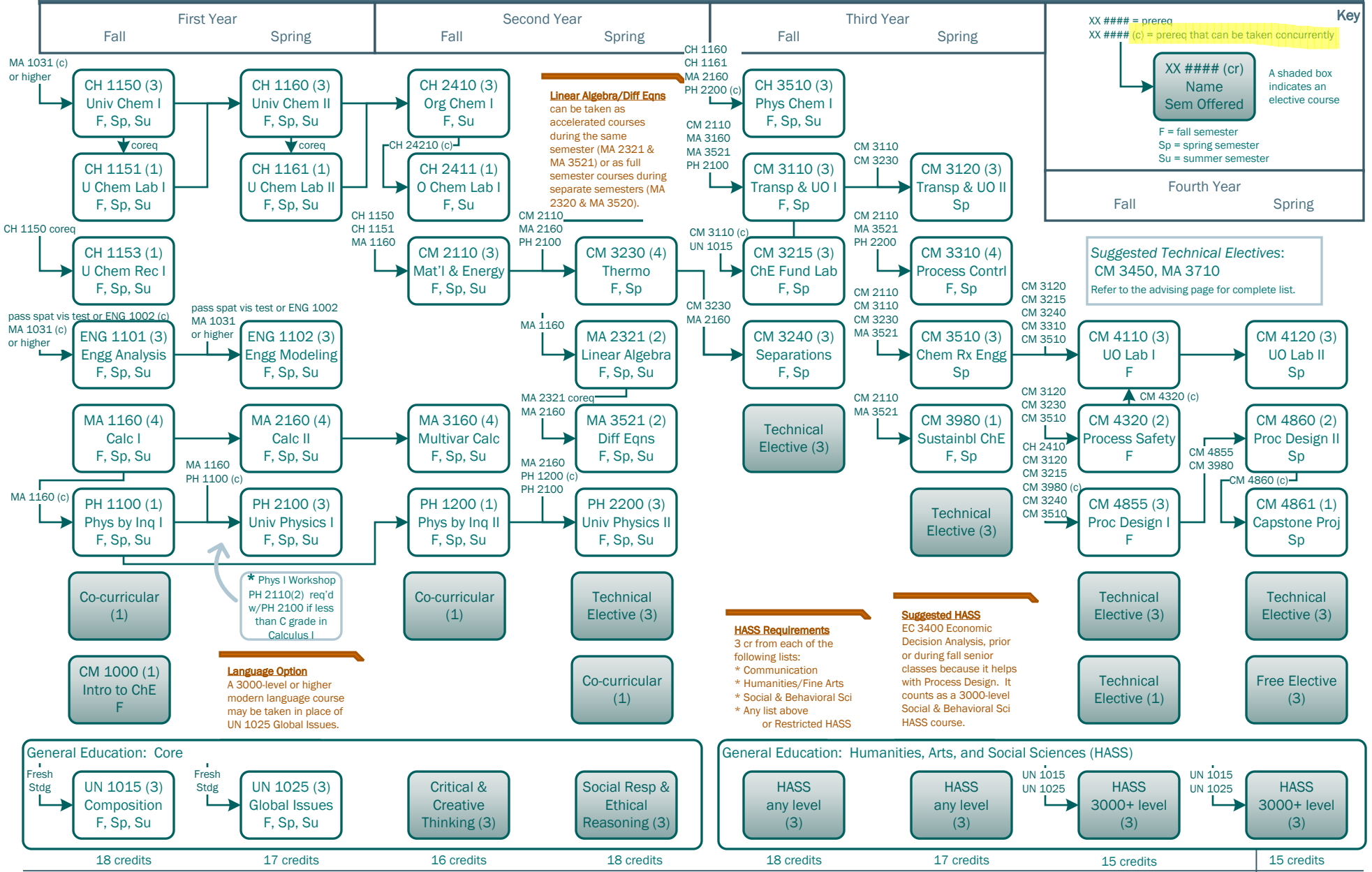


Bachelor of Science in Chemical Engineering



For students starting in the 2024-25 academic year.



Key

XX #### = prereq
XX #### (c) = prereq that can be taken concurrently

XX #### (cr)
Name
Sem Offered

A shaded box indicates an elective course

F = fall semester
Sp = spring semester
Su = summer semester

Suggested Technical Electives:
CM 3450, MA 3710
Refer to the advising page for complete list.

HASS Requirements
3 or from each of the following lists:
* Communication
* Humanities/Fine Arts
* Social & Behavioral Sci
* Any list above or Restricted HASS

Suggested HASS
EC 3400 Economic Decision Analysis, prior or during fall senior classes because it helps with Process Design. It counts as a 3000-level Social & Behavioral Sci HASS course.