

F INDICATES COURSE IS OFFERED FALL SEMESTER

S INDICATES COURSE IS OFFERED SPRING SEMESTER

SU INDICATES COURSE IS OFFERED SUMMER SEMESTER

(L) INDICATES A COURSE WHICH INCLUDES A LAB
MUST BE SCHEDULED IN ADDITION TO THE LECTURE

(C) INDICATES THE COURSE CAN EITHER BE TAKEN AT THE SAME TIME (CO-REQ) OR
TAKEN PRIOR TO THE COURSE (PRE-REQ)

Total Academic Credits: 127

Total Co-Curricular Units: 3

GEOSPATIAL ENGINEERING FLOWCHART

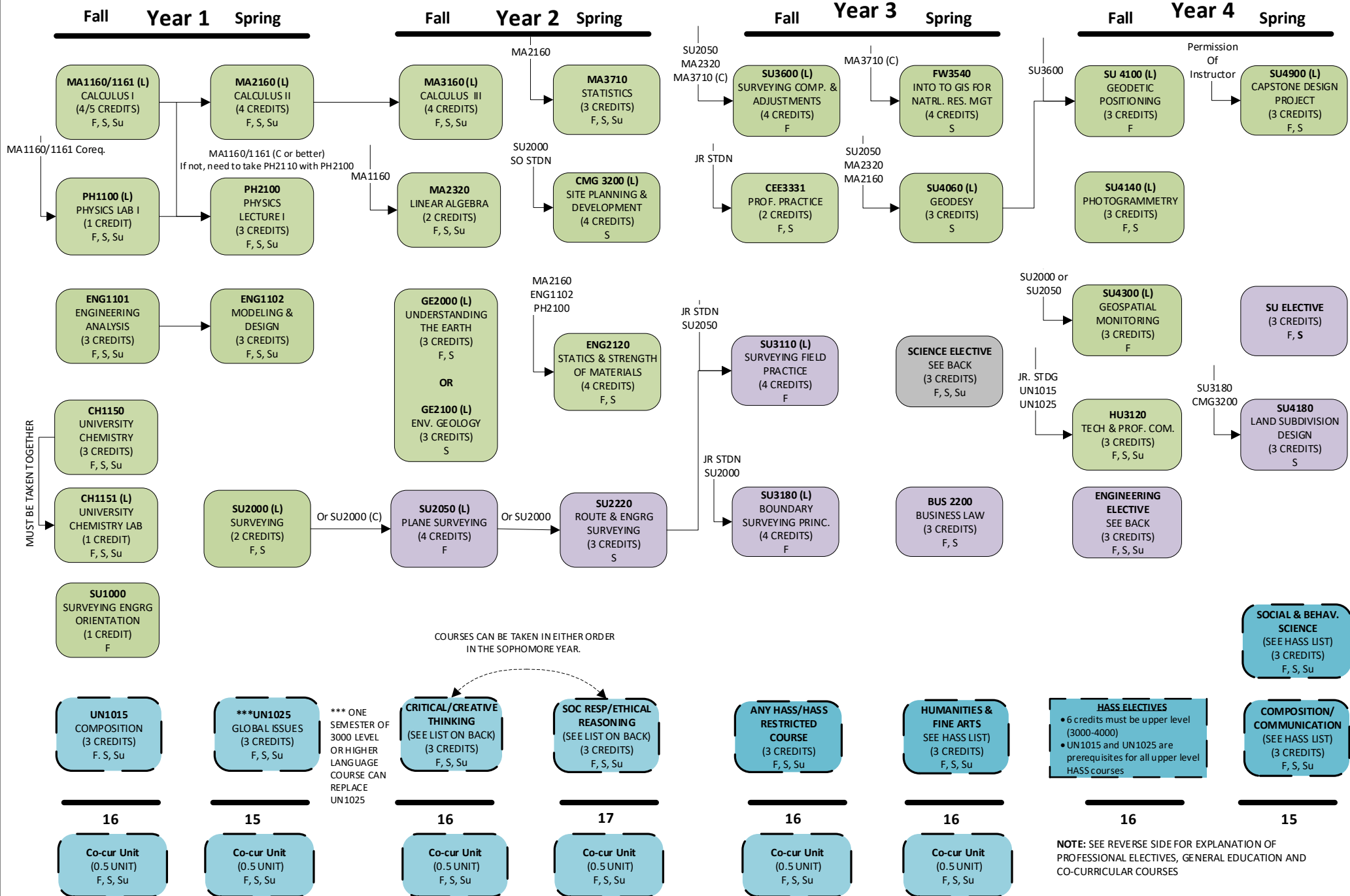
Professional Surveying Emphasis

Academic Year 2020-21



This is not an official list of degree requirements.
Adjustments may be required due to curriculum changes.

Updated 06/12/20



Engineering Elective List (3 credits)

CEE3101	Civil Engineering Materials (3 cr)	F, S
CEE3332	Fundamentals of Construction (3 cr)	F, S
CEE3401	Transportation Engineering (3 cr)	F, S
CEE3810	Soil Mechanics (4 cr)	F, S
ENG3200	Thermo/Fluids (4 cr)	F, S
ENTXXXX	Enterprise (Except 3960/4950) (var)	F, S
UN3002	Co-op (1-2 cr)	F, S, Su

Science Elective List (3 credits)

BL2001	Valuing the Great Lakes (3 cr)	F
BL2160	Botany (4 cr)	S
CH1153	Chemistry Recitation I (1 cr)	F, S, Su
FW2010	Vegetation of North America (4 cr)	F
PH1200/2200	Physics II (4 cr – 1 cr lab, 3 cr lecture)	F, S, Su
PH1600/1610	Introductory Astronomy & Lab (3 cr – 1 cr lab, 2 cr lecture)	F, S, Su
GE3850	Geohydrology (3 cr)	S

Surveying Elective List (3 credits)

SU4010	Geospatial Concepts, Technologies, and Data (3 cr)	S
SU4011	Cadastre and Land Information Systems (3 cr)	F (alt yrs)
SU4012	Geospatial Data Mining and Crowd Sourcing (3 cr)	S (alt yrs)
SU4013	Hydrographic Mapping (3 cr)	S
SU4142	3D Surveying and Modeling w/ Laser Scanner Data (3 cr)	On Demand
SU4996	Special Topics in Geospatial Technologies (var)	On Demand
SU4997	Independent Study in Geospatial Technologies (var)	On Demand
SU4998	Undergrad Research in Geospatial Technologies (var)	On Demand

UNDERGRADUATE CATALOG:

<http://www.mtu.edu/catalog/courses/>

GENERAL EDUCATION (CO-CURRICULAR & HASS LIST):

<https://www.mtu.edu/registrar/faculty-staff/advisors/gen-ed/>

GENERAL EDUCATION REQUIREMENTS**A. CORE COURSES (12 CREDITS)**

1. **UN1015** (COMPOSITION)
2. **UN1025** (GLOBAL ISSUES) or 3000+ level Modern Language Course

3. CRITICAL AND CREATIVE THINKING

FA2330, FA2520, FA2720, FA2820, HU2130, HU2324, HU2501, HU2503, HU2538, HU2700, HU2820, HU2910, SS2300

4. SOCIAL RESP. & ETHICAL REASONING

EC2001, PSY2000, SS2100, SS2200, SS2400, SS2500, SS2501, SS2502, SS2503, SS2504, SS2505, SS2600, SS2610, SS2700

B. HASS COURSES (12 CREDITS) (General Ed Website, left)

1. COMMUNICATION & COMPOSITION: _____
2. HUMANITIES & FINE ARTS: _____
3. SOCIAL & BEHAVIORAL SCIENCE: _____
4. ANY HASS OR HASS RESTRICTED: _____

- 6 credits must be upper division 3000-4000 level courses
- No more than 3 credits from the HASS Restricted list can be used to satisfy HASS requirements.
- Each course can satisfy only one requirement.

C. CO-CURRICULAR ACTIVITIES (3 UNITS)

(General Ed Website, left)

PE/FA/AR/AF_____	PE/FA/AR/AF_____
PE/FA/AR/AF_____	PE/FA/AR/AF_____
PE/FA/AR/AF_____	PE/FA/AR/AF_____