

F INDICATES COURSE IS OFFERED FALL SEMESTER

S INDICATES COURSE IS OFFERED SPRING SEMESTER

Su INDICATES COURSE IS OFFERED SUMMER SEMESTER

(L) INDICATES A COURSE WHICH INCLUDES A LAB
MUST BE SCHEDULED IN ADDITION TO THE LECTURE

(C) INDICATES THE COURSE CAN EITHER BE TAKEN AT THE SAME TIME (CO-REQ) OR
TAKEN PRIOR TO THE COURSE (PRE-REQ)

GEOSPATIAL ENGINEERING FLOWCHART

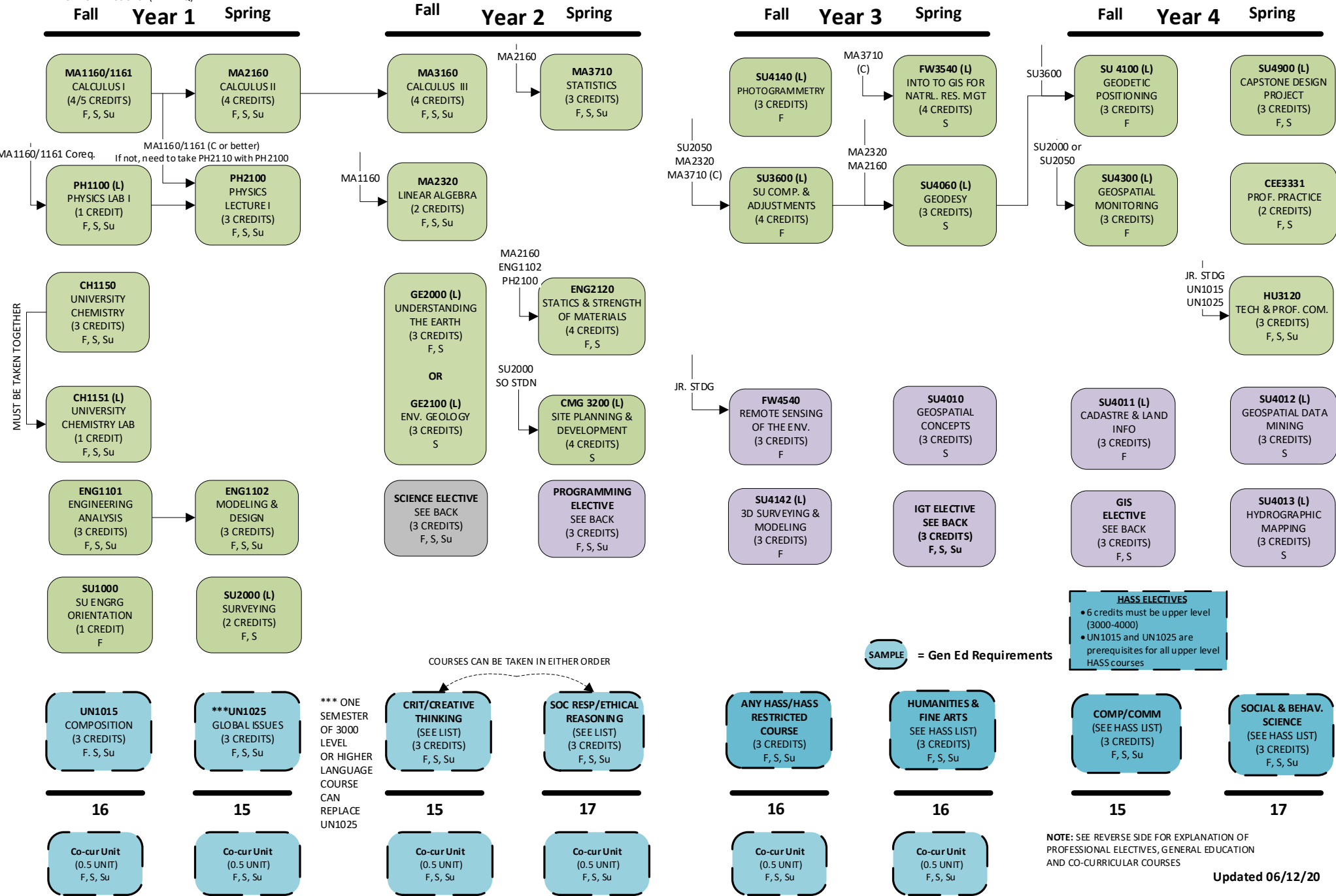
Geoinformatics Emphasis

Academic Year 2020-21

Total Academic Credits: 127
Total Co-Curricular Units: 3



This is not an official list of degree requirements.
Adjustments may be required due to curriculum changes.



IGT Elective List (3 credits)

CMG1200	Intro to BIM (3 cr)	S
EE4777	Distributed Additive Manufacturing (3 cr)	F
UN5550	Intro to Data Science (3 cr)	F

GIS Elective List (3 credits)

SS2050	Fundamentals of GIS and Technologies (3 cr)	F
SS4050	Advanced GIS Methods and Projects (3 cr)	F (alt yrs)

Programming Elective List (3 credits)

CS1121	Intro to Programming I (3 cr)	F, S, Su
CS1131	Accelerated Intro to Programming (5 cr)	F
FW5553	Python Programming w/ ArcMap GIS (3 cr)	F
SU4601	R for Geoscience (3 cr)	On Demand

Science Elective List (3 credits)

BL2001	Valuing the Great Lakes (3 cr)	F
BL2160	Botany (4 cr)	S
CH1153	Chemistry Recitation I (1 cr)	F, S, Su
FW2010	Vegetation of North America (4 cr)	F
PH1200/2200	Physics II (4 cr – 1 cr lab, 3 cr lecture)	F, S, Su
PH1600/1610	Introductory Astronomy & Lab (3 cr – 1 cr lab, 2 cr lecture)	F, S, Su
GE3850	Geohydrology (3 cr)	

UNDERGRADUATE CATALOG:

<http://www.mtu.edu/catalog/courses/>

GENERAL EDUCATION (CO-CURRICULAR & HASS LIST):

<https://www.mtu.edu/registrar/faculty-staff/advisors/gen-ed/>

GENERAL EDUCATION REQUIREMENTS

A. CORE COURSES (12 CREDITS)

1. **UN1015** (COMPOSITION)
2. **UN1025** (GLOBAL ISSUES) or 3000+ level Modern Language Course
3. **CRITICAL AND CREATIVE THINKING**
FA2330, FA2520, FA2720, FA2820, HU2130, HU2324, HU2501, HU2503, HU2538, HU2700, HU2820, HU2910, SS2300
4. **SOCIAL RESP. & ETHICAL REASONING**
EC2001, PSY2000, SS2100, SS2200, SS2400, SS2500, SS2501, SS2502, SS2503, SS2504, SS2505, SS2600, SS2610, SS2700

B. HASS COURSES (12 CREDITS) (General Ed Website, left)

1. COMMUNICATION & COMPOSITION: _____
 2. HUMANITIES & FINE ARTS: _____
 3. SOCIAL & BEHAVIORAL SCIENCE: _____
 4. ANY HASS OR HASS RESTRICTED COURSE: _____
- 6 credits must be upper division 3000-4000 level courses
 - No more than 3 credits from the HASS Restricted list can be used to satisfy HASS requirements.
 - Each course can satisfy only one requirement.

**C. CO-CURRICULAR ACTIVITIES (3 UNITS)
(General Ed Website, left)**

PE/FA/AR/AF_____	PE/FA/AR/AF_____
PE/FA/AR/AF_____	PE/FA/AR/AF_____
PE/FA/AR/AF_____	PE/FA/AR/AF_____