

F INDICATES COURSE IS OFFERED FALL SEMESTER

S INDICATES COURSE IS OFFERED SPRING SEMESTER

SU INDICATES COURSE IS OFFERED SUMMER SEMESTER

(L) INDICATES A COURSE WHICH INCLUDES A LAB
MUST BE SCHEDULED IN ADDITION TO THE LECTURE

(C) INDICATES THE COURSE CAN EITHER BE TAKEN AT THE SAME TIME (CO-REQ) OR
TAKEN PRIOR TO THE COURSE (PRE-REQ) OR

Total Academic Credits: 127

Total Co-Curricular Units: 3

SURVEYING ENGINEERING FLOWCHART

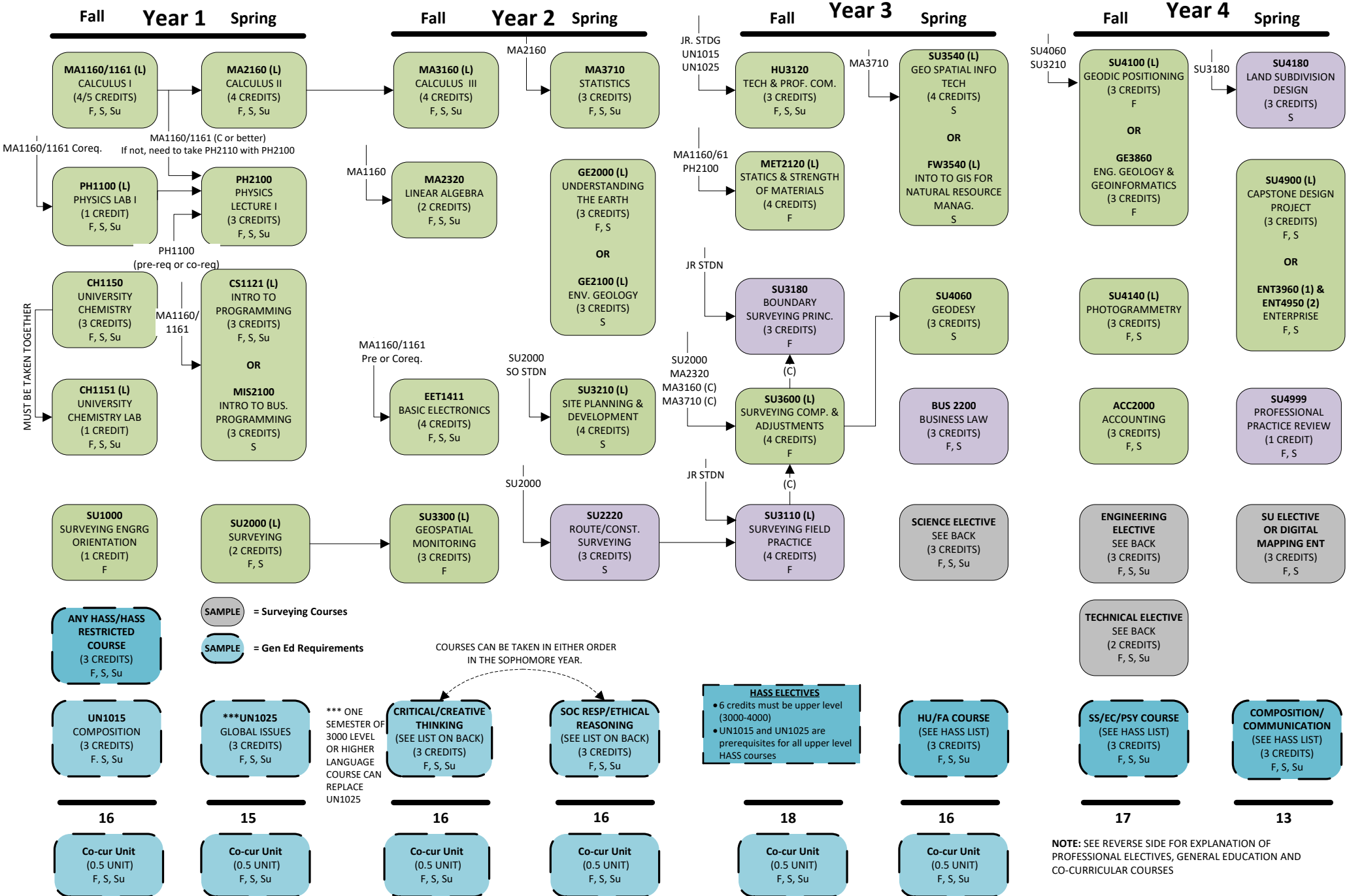
Professional Surveying Emphasis

Academic Year 2019-20



This is not an official list of degree requirements.
Adjustments may be required due to curriculum changes.

Updated 05/22/19



Engineering Elective List (3 credits)

CEE3101	Civil Engineering Materials (3 cr)	F, S
CEE3332	Fundamentals of Construction (3 cr)	F, S
CEE3401	Transportation Engineering (3 cr)	F, S
CEE3810	Soil Mechanics (4 cr)	F, S

Science Elective List (3 credits)

CH1153	Chemistry Recitation I (1 cr)	F, S, Su
FW2010	Vegetation of North America (4 cr)	F
PH1200/2200	Physics II (4 cr – 1 cr lab, 3 cr lecture)	F, S, Su
PH1600/1610	Introductory Astronomy & Lab (3 cr – 1 cr lab, 2 cr lecture)	F, S, Su

Technical Elective List (1-2 credits)

CEE3331	Professional Practice (2 cr)	F, S
ENG3200	Thermo/Fluids (4 cr)	F, S
ENTXXXX	Enterprise (Except 3960/4950) (var)	F, S
UN3002	Co-op (1-2 cr)	F, S, Su

Surveying Elective List (3 credits)

SU4010	Geospatial Concepts, Technologies, and Data (3 cr)	Spring
SU4011	Cadastre and Land Information Systems (3 cr)	Fall (alt)
SU4012	Geospatial Data Mining and Crowd Sourcing (3 cr)	Spring (alt)
SU4013	Hydrographic Mapping (3 cr)	Spring
SU4142	3D Surveying and Modeling w/ Laser Scanner Data (3 cr)	On Demand
SU4996	Special Topics in Geospatial Technologies (var)	On Demand
SU4997	Independent Study in Geospatial Technologies (var)	On Demand
SU4998	Undergrad Research in Geospatial Technologies (var)	On Demand

UNDERGRADUATE CATALOG:

<http://www.mtu.edu/catalog/courses/>

GENERAL EDUCATION (CO-CURRICULAR & HASS LIST):

<https://www.mtu.edu/registrar/faculty-staff/advisors/gen-ed/>

GENERAL EDUCATION REQUIREMENTS**A. CORE COURSES (12 CREDITS)**

1. **UN1015** (COMPOSITION)
2. **UN1025** (GLOBAL ISSUES)
3. **CRITICAL AND CREATIVE THINKING**

FA2330, FA2520, FA2720, FA2820, HU2130, HU2324, HU2501, HU2503, HU2538, HU2700, HU2820, HU2910, SS2300

4. SOCIAL RESP. & ETHICAL REASONING

EC2001, ED2000, PSY2000, SS2100, SS2200, SS2400, SS2500, SS2501, SS2502, SS2503, SS2504, SS2505, SS2600, SS2610, SS2700

B. HASS COURSES (12 CREDITS) (General Ed Website, left)

1. COMMUNICATION/COMP: _____
2. HU OR FA COURSE: _____
3. SS OR EC OR PSY COURSE: _____
4. ANY HASS OR HASS RESTRICTED COURSE: _____

- 6 credits must be upper division 3000-4000 level courses
- No more than 3 credits from the HASS Restricted list can be used to satisfy HASS requirements.
- Each course can satisfy only one requirement.

C. CO-CURRICULAR ACTIVITIES (3 UNITS)

(General Ed Website, left)

PE/FA/AR/AF _____	PE/FA/AR/AF _____
PE/FA/AR/AF _____	PE/FA/AR/AF _____
PE/FA/AR/AF _____	PE/FA/AR/AF _____

F INDICATES COURSE IS OFFERED FALL SEMESTER

S INDICATES COURSE IS OFFERED SPRING SEMESTER

Su INDICATES COURSE IS OFFERED SUMMER SEMESTER

(L) INDICATES A COURSE WHICH INCLUDES A LAB
MUST BE SCHEDULED IN ADDITION TO THE LECTURE

(C) INDICATES THE COURSE CAN EITHER BE TAKEN AT THE SAME TIME (CO-REQ) OR
TAKEN PRIOR TO THE COURSE (PRE-REQ)

SURVEYING ENGINEERING FLOWCHART

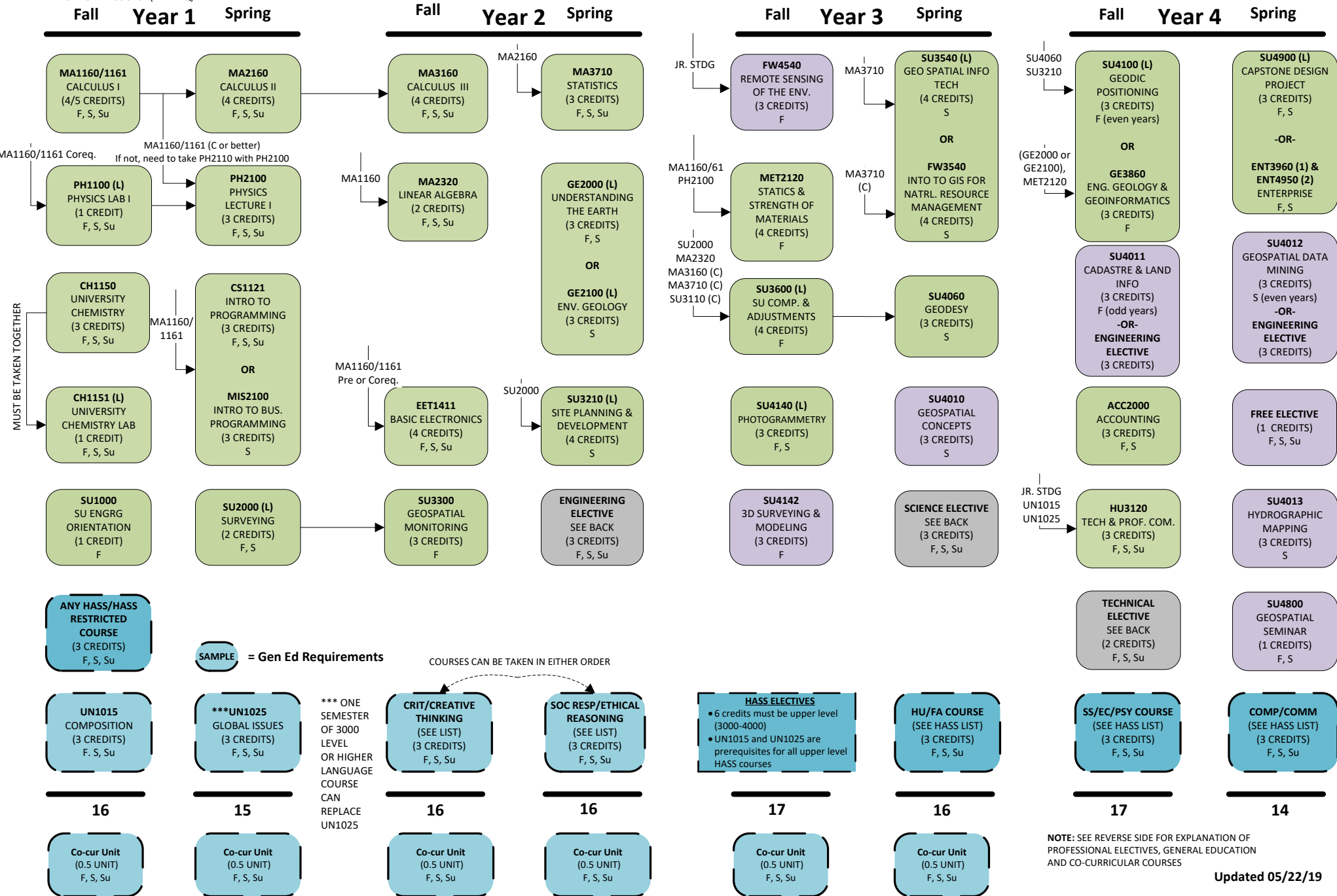
Geoinformatics Emphasis

Academic Year 2019-20

Total Academic Credits: 127
Total Co-Curricular Units: 3



This is not an official list of degree requirements.
Adjustments may be required due to curriculum changes.



NOTE: SEE REVERSE SIDE FOR EXPLANATION OF PROFESSIONAL ELECTIVES, GENERAL EDUCATION AND CO-CURRICULAR COURSES

Updated 05/22/19

Engineering Elective List (3 credits)

CEE3101	Civil Engineering Materials (3 cr)	F, S
CEE3332	Fundamentals of Construction (3 cr)	F, S
CEE3401	Transportation Engineering (3 cr)	F, S
CEE3810	Soil Mechanics (4 cr)	F, S

Science Elective List (3 credits)

CH1153	Chemistry Recitation I (1 cr)	F, S, Su
FW2010	Vegetation of North America (4 cr)	F
PH1200/2200	Physics II (4 cr – 1 cr lab, 3 cr lecture)	F, S, Su
PH1600/1610	Introductory Astronomy & Lab (3 cr – 1 cr lab, 2 cr lecture)	F, S, Su

Technical Elective List (1-2 credits)

CEE3331	Professional Practice (2 cr)	F, S
ENG3200	Thermo/Fluids (4 cr)	F, S
ENTXXXX	Enterprise (Except 3960/4950) (var)	F, S
UN3002	Co-op (1-2 cr)	F, S, Su

UNDERGRADUATE CATALOG:

<http://www.mtu.edu/catalog/courses/>

GENERAL EDUCATION (CO-CURRICULAR & HASS LIST):

<https://www.mtu.edu/registrar/faculty-staff/advisors/gen-ed/>

GENERAL EDUCATION REQUIREMENTS

A. CORE COURSES (12 CREDITS)

1. **UN1015** (COMPOSITION)

2. **UN1025** (GLOBAL ISSUES)

3. CRITICAL AND CREATIVE THINKING

FA2330, FA2520, FA2720, FA2820, HU2130, HU2324, HU2501, HU2503, HU2538, HU2700, HU2820, HU2910, SS2300

4. SOCIAL RESP. & ETHICAL REASONING

EC2001, ED2000, PSY2000, SS2100, SS2200, SS2400, SS2500, SS2501, SS2502, SS2503, SS2504, SS2505, SS2600, SS2610, SS2700

B. HASS COURSES (12 CREDITS) (General Ed Website, left)

1. COMMUNICATION/COMP: _____

2. HU OR FA COURSE: _____

3. SOCIAL & BEHAVIORAL STUDIES COURSE: _____

4. ANY HASS OR HASS RESTRICTED COURSE: _____

- 6 credits must be upper division 3000-4000 level courses
- No more than 3 credits from the HASS Restricted list can be used to satisfy HASS requirements.
- Each course can satisfy only one requirement.

C. CO-CURRICULAR ACTIVITIES (3 UNITS)

(General Ed Website, left)

PE/FA/AR/AF _____

PE/FA/AR/AF _____

PE/FA/AR/AF _____

PE/FA/AR/AF _____

PE/FA/AR/AF _____

PE/FA/AR/AF _____