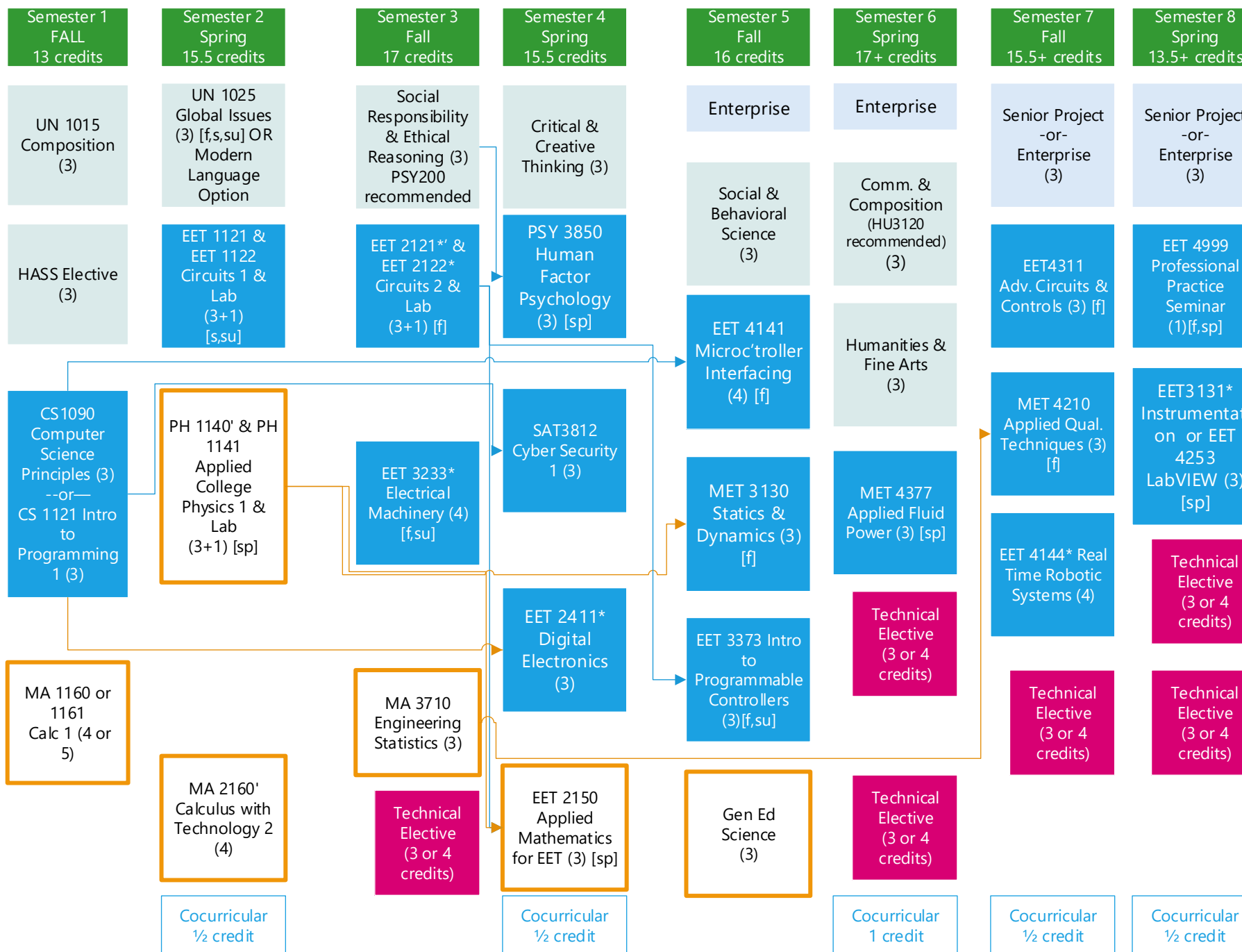


Bachelor of Science – Mechatronics
Academic Year 2021 – 2022 --- A Possible Course Sequence



- Technical Electives
(18 credits minimum)
- CS 1122 Intro to Prog'ing 2
 - CS 1142 Programming @ HW/SW Interface
 - CS 2311 Discrete Structures
 - CS 2321 Data Structures
 - CS 3311 Formal Models of Computation
 - CS 3411 Systems Programming
 - CS 3421 Computer Organization
 - CS 4471 Computer Security
 - CS 4760 User Interface Design & Implementation
 - CS 4811 Artificial Intelligence
 - EE 2180 Intro to Robotics and Lab
 - EE 3280 Robot Operating Systems
 - EE 4272/CS 4461 Computer Networks
 - EE 4723/CS 4723 Network Security
 - EET 2141 Digital Electronics & Microprocessor Fundamentals
 - EET 2220 Electronic Devices & Circuits
 - EET 4147 Industrial Robotic Vision Systems & Adv. Teach Pendant Programming
 - EET 4373 Adv. Programmable Controllers
 - EET 4996 Special Topics in EET
 - EET 4997 Independent Study in EET
 - EET 4998 Undergrad Research in EET
 - MET 2153 Machine Tool Fundamentals & Applications
 - MET 2400 Practical Applications in Parametric Modeling
 - MET 4355 Industrial Systems Simulation
 - MIS 4200 Management of Cyber Security
 - PSY 4015 Cognitive Task Analysis Methods
 - SAT 1610 Computer & OS Architecture
 - SAT 2711 Linux Fundamentals
 - SAT 3310 Scripting for Admin, Automation & Security
 - SAT 3820 Wireless System Admin & Security
 - SAT 4310 Adv. Scripting Programming
 - SAT 4812 Cyber Security 2
 - SAT 4816 Digital Forensics

* - EET 1121 is a prerequisite
' - MA 1160/61 is a prerequisite