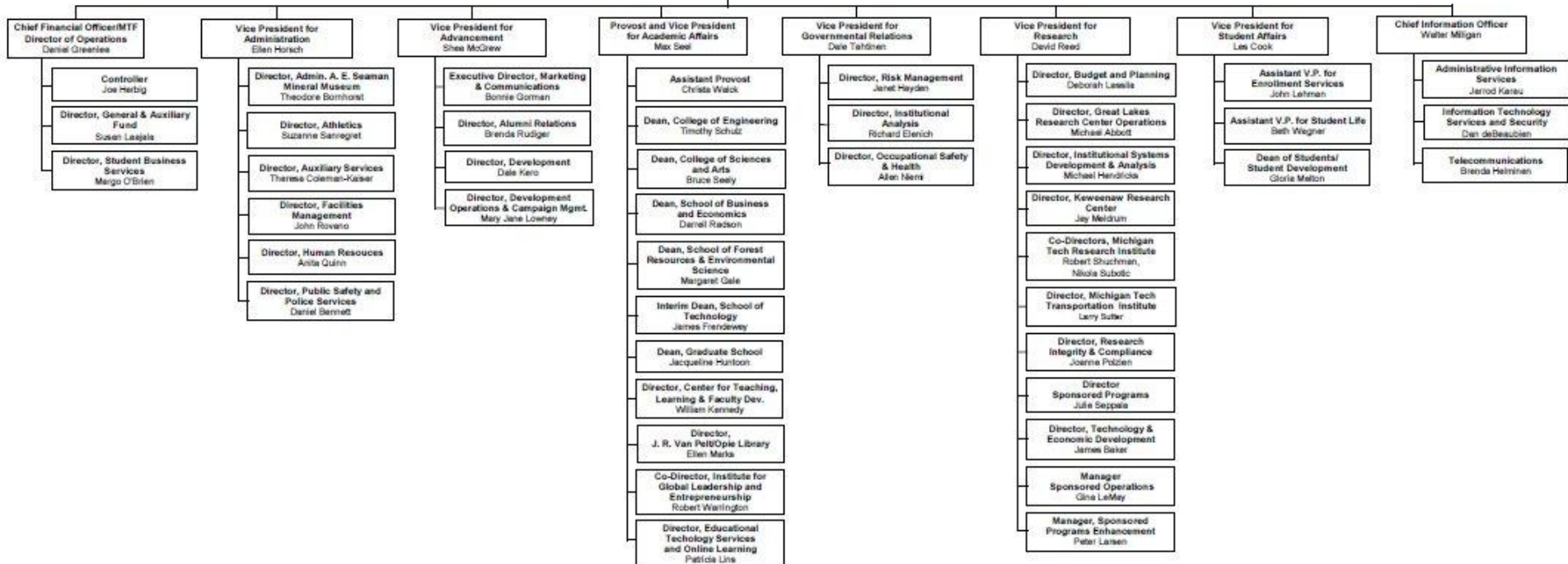
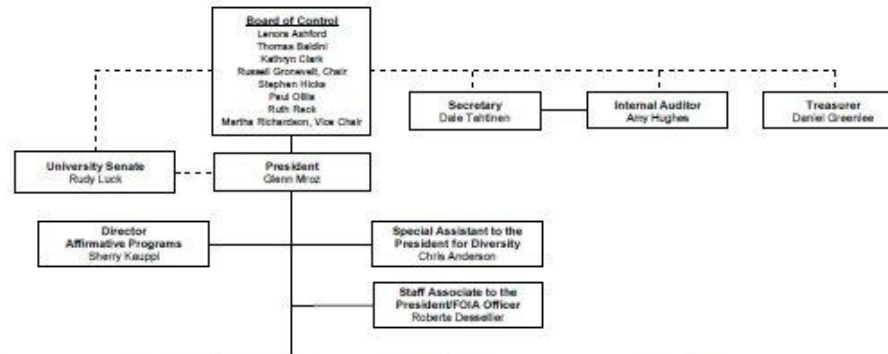


University Senate

TO: Board of Control
From: Rudy Luck, University Senate President
Re: University Senate Report
Date: September 15, 2010

- Governing Chart
- Senate accomplishments for 2009-2010
- New search engine on Senate website
- Charges to Committee members



2009-2010 Senate Proposals

Proposal # and Title	Date Received in Senate Office	Committee Referral and Date	Senate Floor Introduction	Senate Result	Administrative Response
1-10 : "Proposed Revisions to the Academic Integrity Policy"	08/24/09	Instructional Policy Committee 09/02/09	09/09/09	09/23/09 Sent bk to committee for possible amendment 10/07/09 Adopted by Senate without amendment	approved by admin 10/19/09
2-10 : " Departmental Governance: Combining, Amending, and Revising Senate Proposals 22-08, 11-06, 9-05, 20-02, 23-00, 10-98, 13-95, and 16-92 "	10/01/09	Academic Policy Committee 10/01/09	03-31-10	no action taken 04/14/10	
3-10 : " SBE Charter"	10/07/09			10/07/09 Sent to admin for approval	Approved by admin 10/28/09
4-10 : " Entrepreneurial Leave Proposal "	10/14/09	Academic Policy Committee 10/14/09	01/25/10	adopted by senate 02-10-10	Approved by admin w/editorial change 2/23/10
5-10 : "Survey of Senate Constituency on Compensation Changes" results of survey	emergency proposal 10/14/09	Elections committee to compile survey	10/14/09	surveys mailed to senate constituents 10/21/09	results of survey forwarded to administration 11-04-09
6-10 : "Graduate Certificate in Sustainable Water Resources Systems"	10/19/09	Curricular Policy Committee 10/19/09	10/21/09	adopted by senate 11/04/09	Approved by admin 11/06/09
7-10 : "Masters Program in Security and Medical Informatics"	11-16-09	Curricular Policy Committee 11-16-09			
8-10 : "Ph.D. Program in Environmental and Energy Policy"	11-16-09	Curricular Policy Committee 11-16-09	03-17-10	Adopted by Senate 03/31/10	Approved by admin 04/13/10, BOC approved 07/19/10
9-10 : "Minor in Music Composition"	11-20-09	Curricular Policy Committee 11-20-09			
10-10 : "Additional Baccalaureate Degrees"		Curricular Policy Committee	01/25/10	adopted by senate 02-10-10	Approved by admin 2/23/10
11-10 : "Amendment for Proposal 20-04, Graduate Certificates " support document	02-08-10	Curricular Policy Committee	02-10-10	adopted by senate 02-24-10	Approved by admin with one word insert for clarification 03-04-10
12-10 : " Modifications to Professional Leave Policy "	02-11-10	Academic Policy Committee	02-24-10	adopted by senate 03-17-10	Approved by admin 04-13-10
13-10 : " Doctor of Philosophy Degree Program in Geophysics "		Curricular Policy Committee	03-17-10	Adopted by Senate 03/31/10	Approved by admin 04-13-10, BOC approved 07/19/10

2009-2010 Senate Proposals (contd.)

13-10 : " Doctor of Philosophy Degree Program in Geophysics "		Curricular Policy Committee	03-17-10	Adopted by Senate 03/31/10	Approved by admin 04-13-10, BOC approved 07/19/10
14-10 : " Amendment to Proposal 4-10 "		Academic Policy Committee	03-17-10	Adopted by Senate 03/31/10	Approved by admin 04-13-10
15-10 : " Academic Calendar 2011-2012 and Provisional Academic Calendar 2012-2013 "		Instructional Policy Committee	03-17-10	Adopted by Senate 03/31/10	Approved by admin 04-13-10
16-10 : " Current Policies and Procedures "		Senate Executive Committee	03-17-10	Adopted by Senate 03/31/10	no admin approval needed
17-10 : " Modification to Syllabus Requirement"		Instructional Policy Committee 03-17-10	03-17-10	Defeated by Senate 03/31/10	
18-10 : " Amendment to Proposal 02-07: Search Procedure for University Administrators "	03-19-10	Administrative Policy Committee 03-19-10	03-31-10	Adopted by Senate w/amendments 04/14/10	Approved by admin 04/21/10
19-10 : " Increase Membership of Academic Integrity Committee " by Amendment of Proposal 27-95	03-24-10	Instructional Policy Committee 03-24-10	03-31-10	Adopted by Senate 04/14/10	Approved by admin 04/22/10
20-10 : Change of Name of an Academic Program from "Bachelor of Arts in Liberal Arts with a Concentration in English" to "Bachelor of Arts in English "		Curricular Policy Committee	03-31-10	Adopted by Senate 04/14/10	Approved by admin 04/21/10
21-10 : Change of Name of an Academic Program from "Bachelor of Arts in Liberal Arts with a Concentration in Interdisciplinary Studies" to "Bachelor of Arts in Liberal Arts "		Curricular Policy Committee	03-31-10	Adopted by Senate 04/14/10	Approved by admin 04/21/10
22-10 : Amendment of Proposals on "Minors in Degree Programs "		Curricular Policy Committee	03-31-10	Adopted by Senate 04/14/10	Approved by admin 04/21/10
23-10 : Amendment of Proposal 11-01 "Requirements for Graduation (Board of Control Policy 8.5) "		Curricular Policy Committee	03-31-10	Adopted by Senate w/amendment 04/14/10	Approved by admin 04/21/10
24-10 : "International Dual Graduate Degrees"		Curricular Policy Committee	03-31-10	Adopted by Senate w/amendment 04/14/10	Approved by admin 04/21/10
25-10 : Approval of "Procedures to Prepare and Submit a Thesis or Dissertation to Michigan Technological University's Graduate School "		Curricular Policy Committee	03-31-10	Adopted by Senate 04/14/10	Approved by admin 04/21/10
26-10 : "Certificate in Hybrid Electric Drive Vehicle Engineering "		Curricular Policy Committee	03-31-10	Adopted by Senate 04/14/10	Approved by admin 04/21/10
27-10 : "Graduate Certificate in Hybrid Electric Drive Vehicle Engineering "		Curricular Policy Committee	03-31-10	Adopted by Senate 04/14/10	Approved by admin 04/21/10

New Search Engine on Senate Website

[Prospective Students](#) • [Current Students](#) • [Majors](#) • [Athletics](#) • [Admin/Friends](#) • [Parents](#) • [Faculty/Staff](#) • [Search](#) • [A-Z](#)



University
Senate

Menu

[University Senate Information](#)

[Proposals](#)

[Meetings](#)

[Governing Documents](#)

[2010-2011 Calendar Guidelines](#)



Welcome to the University Senate of Michigan Technological University

The University Senate was established in 1958 by the Board of Control of Michigan College of Mining and Technology, now known as Michigan Technological University.

Senate Meetings are rebroadcast on Charter TV channel 20, Monday and Friday from 7-9 p.m. They are also available for viewing on streaming videos (current school year only) by going to Menu, Meetings, Senate Meeting Videos, and choosing the meeting number you wish to view.

There are three Senate site specific search engines (SE) provided below. According to the Google Search Engine and, as of July 1, 2010, the Senate site currently contains 2517 URL's or pages. The first SE, Google, indexed 630 of these. Second, Bing, indexed apparently only 87. Strangely enough on some searches Bing reveals more than google. There is not much control over how these two SE's index or find pages on a site. The third, FreeFind, indexed 1917 (indexes up to 3000 pages free). It is therefore far more comprehensive than the first two (try the advanced procedure) but apparently these will grow with time and use. Therefore you are advised to use them all in finding information regarding history and precedent in your deliberations on Senate proposals.

Google™ Custom Search x



[search tips](#) [advanced search](#)

Ruth Reck

search engine by freefind

News

[Next Senate Meeting #494](#)

[Wednesday September 15, 2010](#)

[2010 President's Evaluation Survey](#)

[Old Business:](#)

[New Business:](#)

<< Prev | Next >>

 New Refine

1. [The University Senate](#)

Board of Control member **Ruth Reck** tomorrow. The Senate executive committee has discussed university finances several times and has asked the Senate president to include financial

www.admin.mtu.edu/usenate/minute/09/476m.htm

2. <http://www.admin.mtu.edu/usenate/minute/96/252.html>

Tahtinen in consultation with Board Chair **Ruth Reck**. Senator Lutzke stated that this is a delicate issue if the legal counsel is sitting there; the University can't wait until

www.admin.mtu.edu/usenate/minute/96/252.html

3. [The University Senate](#)

Board of Control member **Ruth Reck** tomorrow. The Senate executive committee has discussed university finances several times and has asked the Senate president to include financial

www.sas.it.mtu.edu/usenate/minute/09/476m.htm

4. <http://www.admin.mtu.edu/usenate/minute/03/385.htm>

Michigan, and BOC member **Ruth Reck** has a faculty appointment at the University of California, Davis, but she is a laboratory administrator rather than a faculty member. Keen said

www.admin.mtu.edu/usenate/minute/03/385.htm

5. [Minutes Meeting 330](#)

March strategic planning retreat. [Appendix D] A memo was received from Board of Control members **Ruth Reck** and Claude Verbal, regarding information from the Association of

www.admin.mtu.edu/usenate/minute/00/330.htm

6. [Minutes Meeting 310](#)

Seely reported that Board member **Ruth Reck** was the only Board member to vote in favor of the 14-week calendar, stating that the Board should take the advice of the faculty. The

www.admin.mtu.edu/usenate/minute/99/310.htm

7. [The University Senate](#)

At that meeting, **Ruth Reck** stated that for departmental governance to be functional and work well, each department must "buy in" to charters, and Glenn Mroz, then Dean of SFES

www.admin.mtu.edu/usenate/minute/10/478m.htm

CHARGES FOR AY2010-11 SENATE STANDING COMMITTEES

1. Academic Policy Committee
 - a. Establish uniform university-wide processes in departmental charters
 - b. Sabbatical leave requirements
2. Administrative Policy Committee
 - a. President's evaluation – see Senate Procedure 503.1.1
 - b. Administrative evaluation – see Senate Procedure 501.1.1
 - c. Membership of Senate – Senate Bylaw “M”
3. Board of Control Relations Committee
 - a. Represent the Senate at meetings with the Board of Control
 - b. Coordinate interaction between the Senate and the Board of Control
4. Curricular Policy Committee
 - a. Unfinished business - list of outstanding proposals, “Integrated Undergrad/Grad Deg program”
 - b. Proposals/new submission procedures/mechanism for rejection of incomplete documents
5. Elections Committee
 - a. Voting forms
 - b. Find nominees for CATPR committee
6. Finance Committee
 - a. Present and inform senators as to financial status of the school
 - b. Present report on student financial aid

7. Fringe Benefits Committee

- a. Informing senators of wellness plans and create some
- b. Health insurance rates

8. Institutional Planning Committee

- a. New building construction and parking
- b. Review admission standards at Michigan Tech

9. Instructional Policy Committee

- a. Calendar
- b. Status of end of term and peer-teaching evaluations. Is it time for online teaching evaluations?

10. Professional Staff Policy Committee

- a. Evaluate staff constituency groupings in Senate
- b. Relations with staff council
- c. Proposals to benefit staff

11. Research Policy Committee

- a. Overhead returns on proposals
- b. Evaluate changes in research directives
- c. Research office internal forms: Can proposals be done entirely online?