



# CAMPUS FORUM

February 26, 2008



## **Michigan Tech: A Partial Environmental Scan**

- State Funding
- FY09 Budget Priority
- Student Recruiting
- Enrollment: A Balancing Act
- Rankings
- Research, Scholarship, Development
- Endowment
- Campaign Report



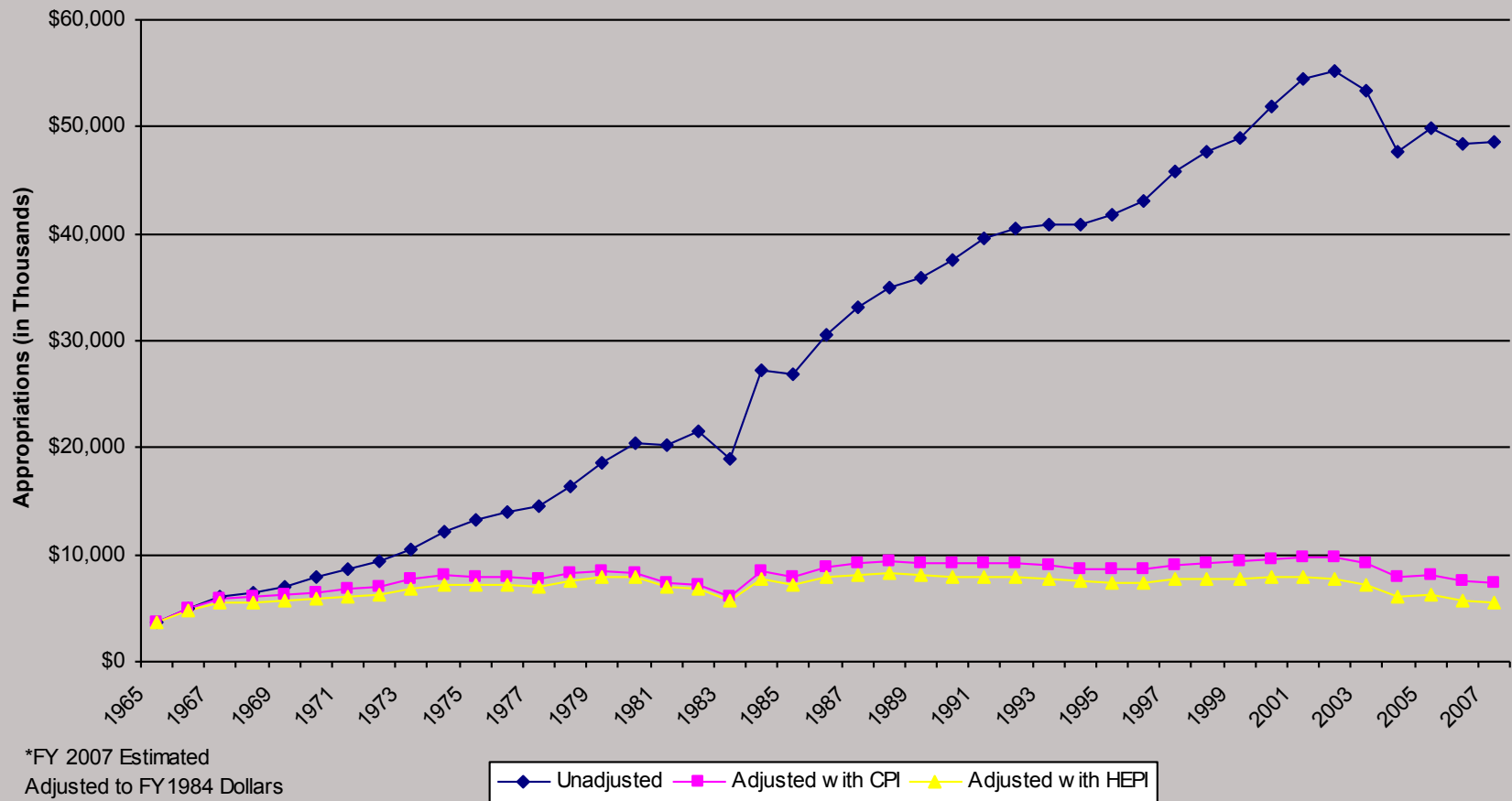
# STATE FUNDING

## Fund Comparison

	<u>FY2005</u>	<u>FY2006</u>	<u>FY2007</u>	<u>FY2008 (Est.)</u>
General Fund				
Income	1.9M	\$ .6M	\$ .3M	(\$ .3M)
Balance	(\$10.0M)	(\$9.4M)	(\$9.1M)	(\$9.4M)
Current Fund				
Income	\$ 3.3M	\$ 1.2M	\$ 1.5M	\$1.4M
Balance	\$ 13.4M	\$14.6M	\$16.1M	\$17.5M

# Michigan Tech

## State Operation Appropriations to Michigan Technological University FY1965 through FY2007





## FY2009 State of Michigan Funding Formula

- 35% Participation Component
  - Based on percentage of undergraduate students receiving Pell Grants and Native American Tuition Waiver
- 15% Research Component
  - Federal Research Expenditures
- 50% Degree Completion Component
  - STEM and Health 4x Non-STEM

\*Floor funding of 2.3%



## FY2009 State of Michigan Funding Formula

	Michigan State	Michigan	Wayne State	Michigan Tech
Participation (\$M)	1.54	1.00	3.70	0.39
Research/Commercializing (\$M)	1.55	3.84	0.85	1.12
Degree Completion (\$M)	4.75	5.35	2.38	0.67
APPROPRIATION	298.0	333.6	226.0	51.2



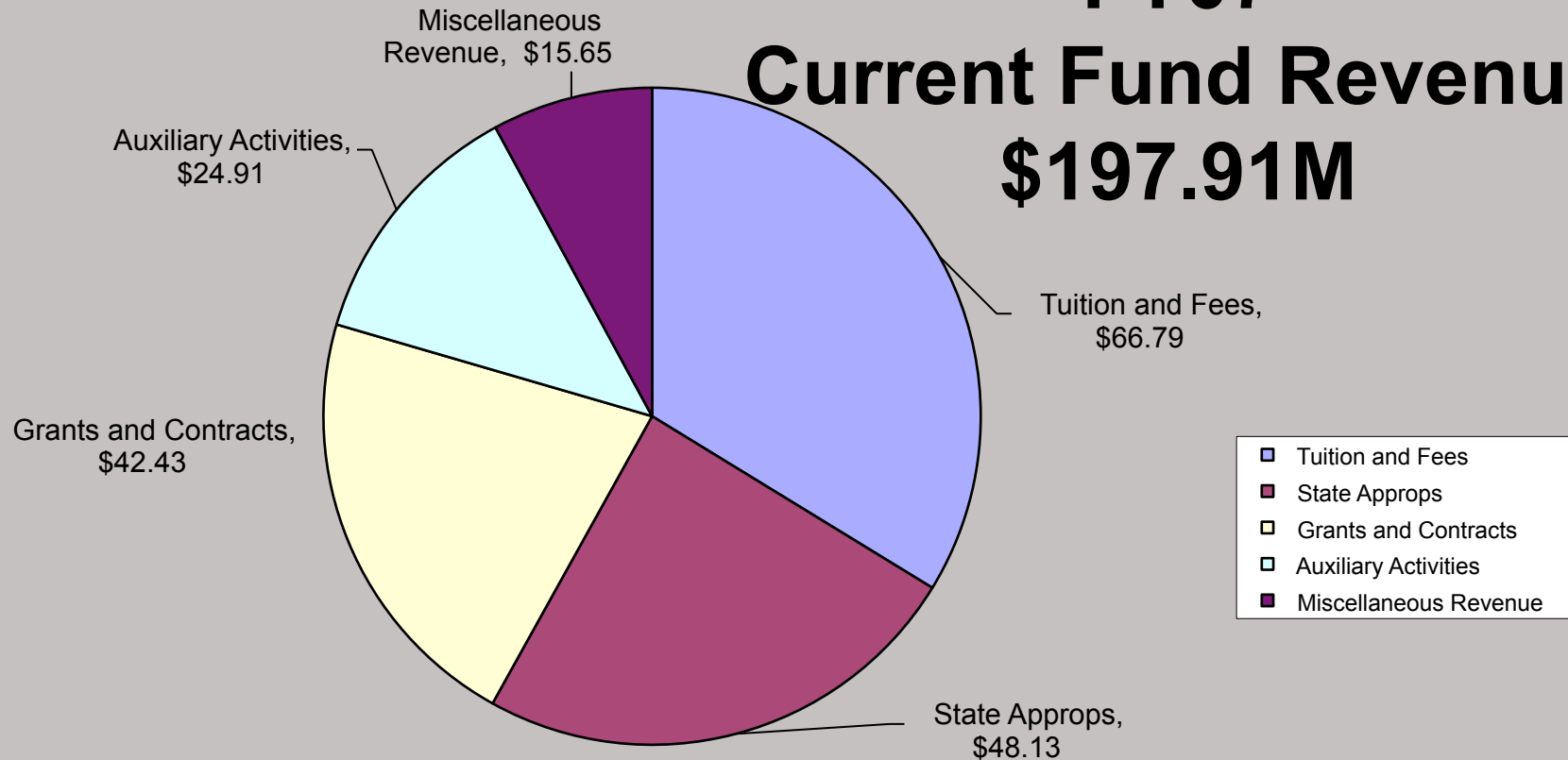
## FY2009 State of Michigan Funding Formula

	Michigan State	Michigan	Wayne State	Michigan Tech
% Increase	2.71	3.15	3.17	4.39
Funding/FYES	6936	8272	8869	8518



**FY07**

## **Current Fund Revenue \$197.91M**





# **FY09 BUDGET PRIORITY**

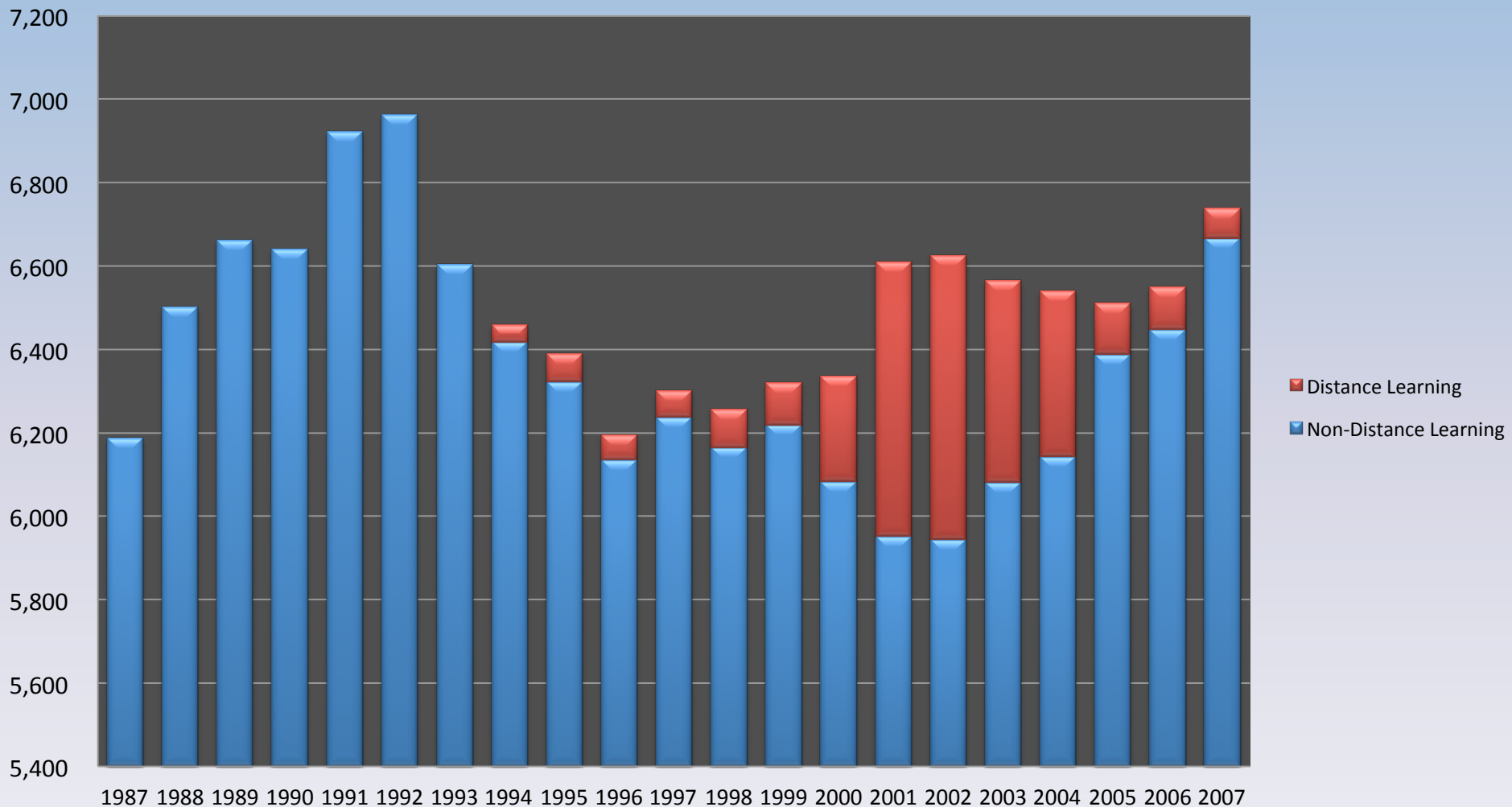
## **Competitive Compensation**



# STUDENT RECRUITING

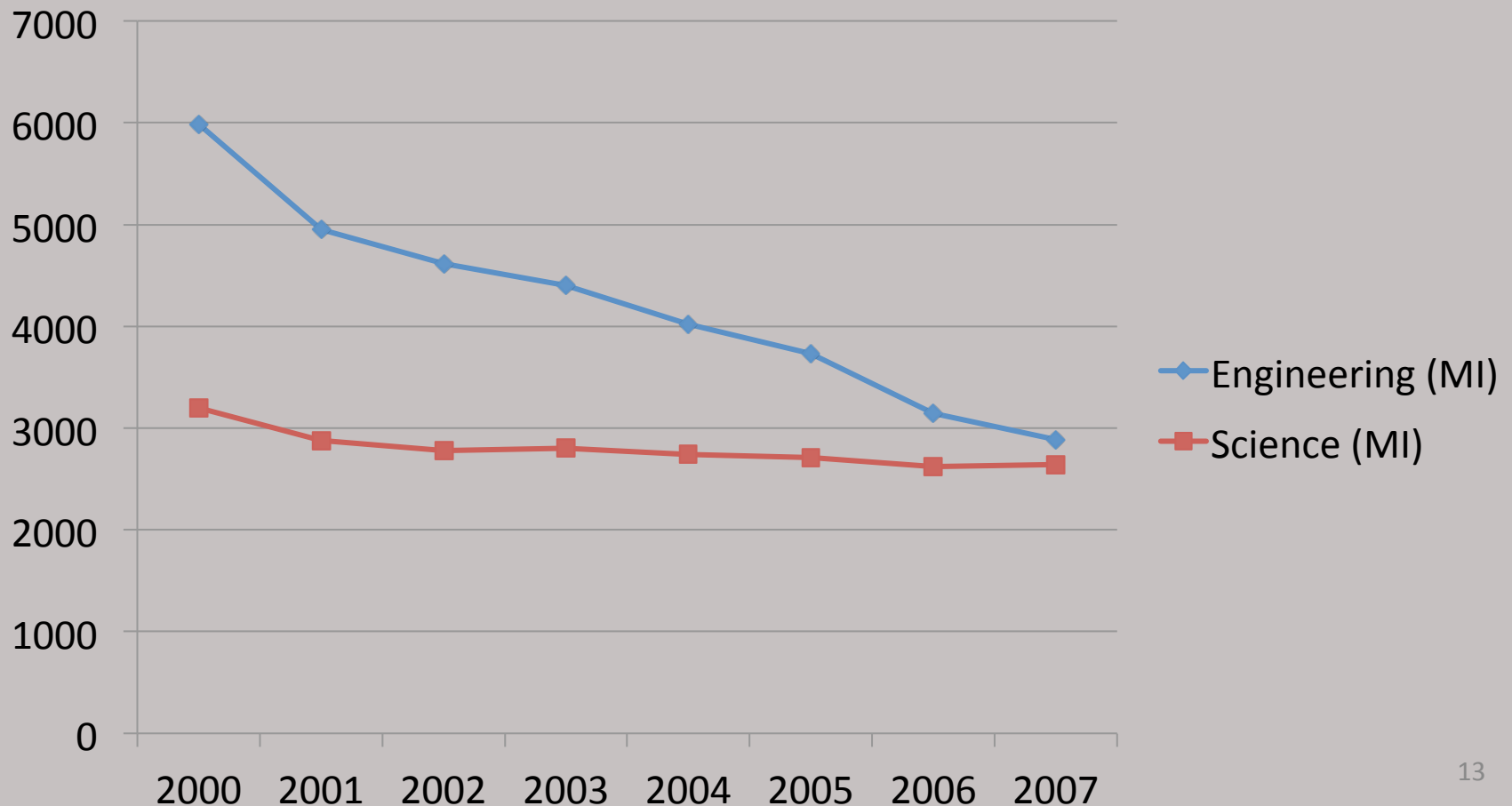
# Michigan Tech

## 1987-2007 Total Enrollment



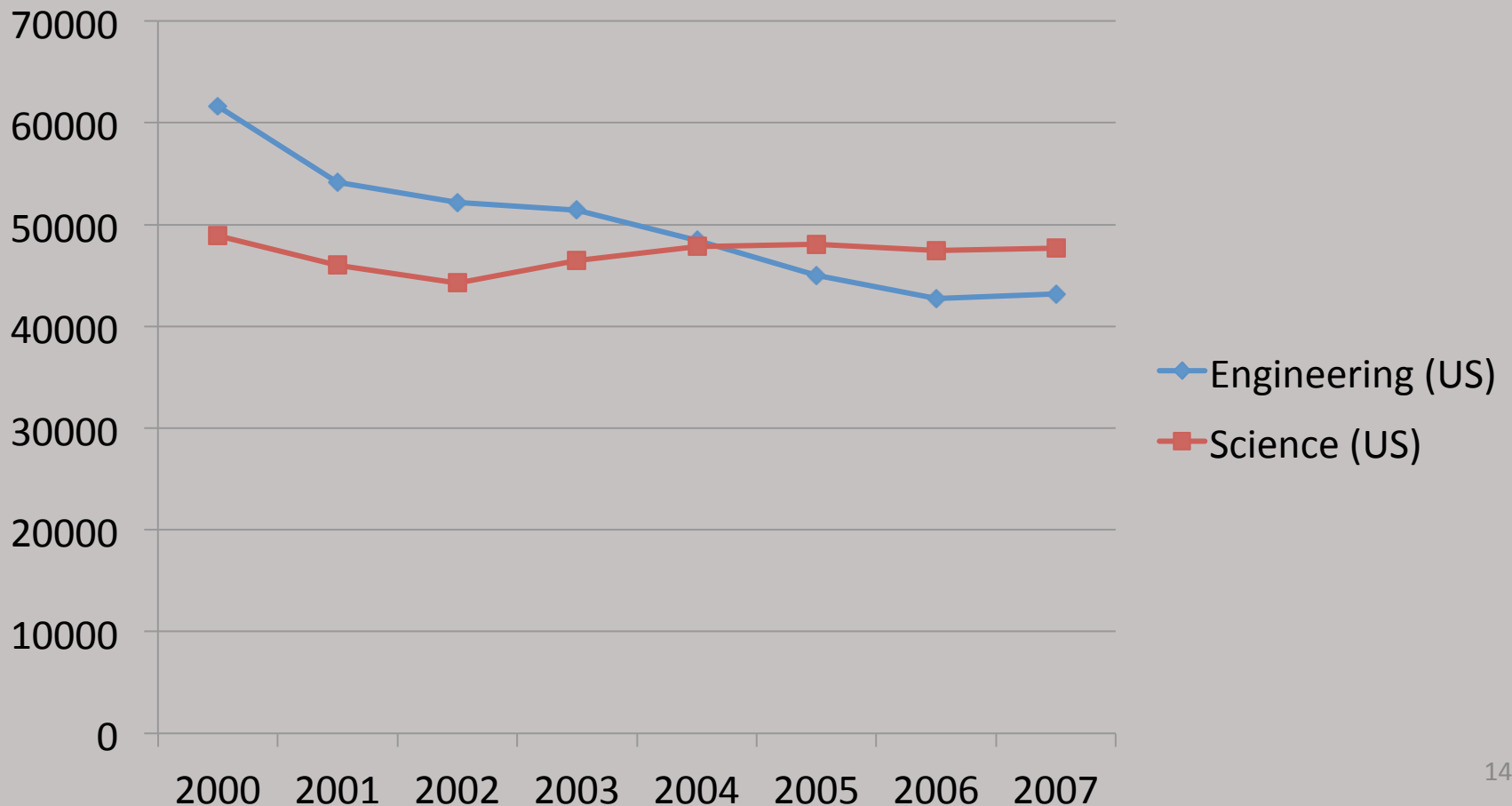
# MichiganTech

## Michigan ACT Test Takers – Interest in Engineering and/or Science



# Michigan Tech

## National ACT Test Takers – Interest in Engineering and/or Science





## Undergraduate Applicants (week 25)

	<u>Number</u>	<u>% Change</u>
Total	5223	+16.6%
Domestic Minority	703	+40.9%
Female	1432	+30.3%

## Undergraduate Active Deposits (week 25)

	<u>Number</u>	<u>% Change</u>
Total	1163	+11.6%
Domestic Minority	67	+36.7%
Female	283	+29.8%





## **Our Key Competitors For Students**

**University of Michigan**

**Michigan State University**

**Grand Valley State University**

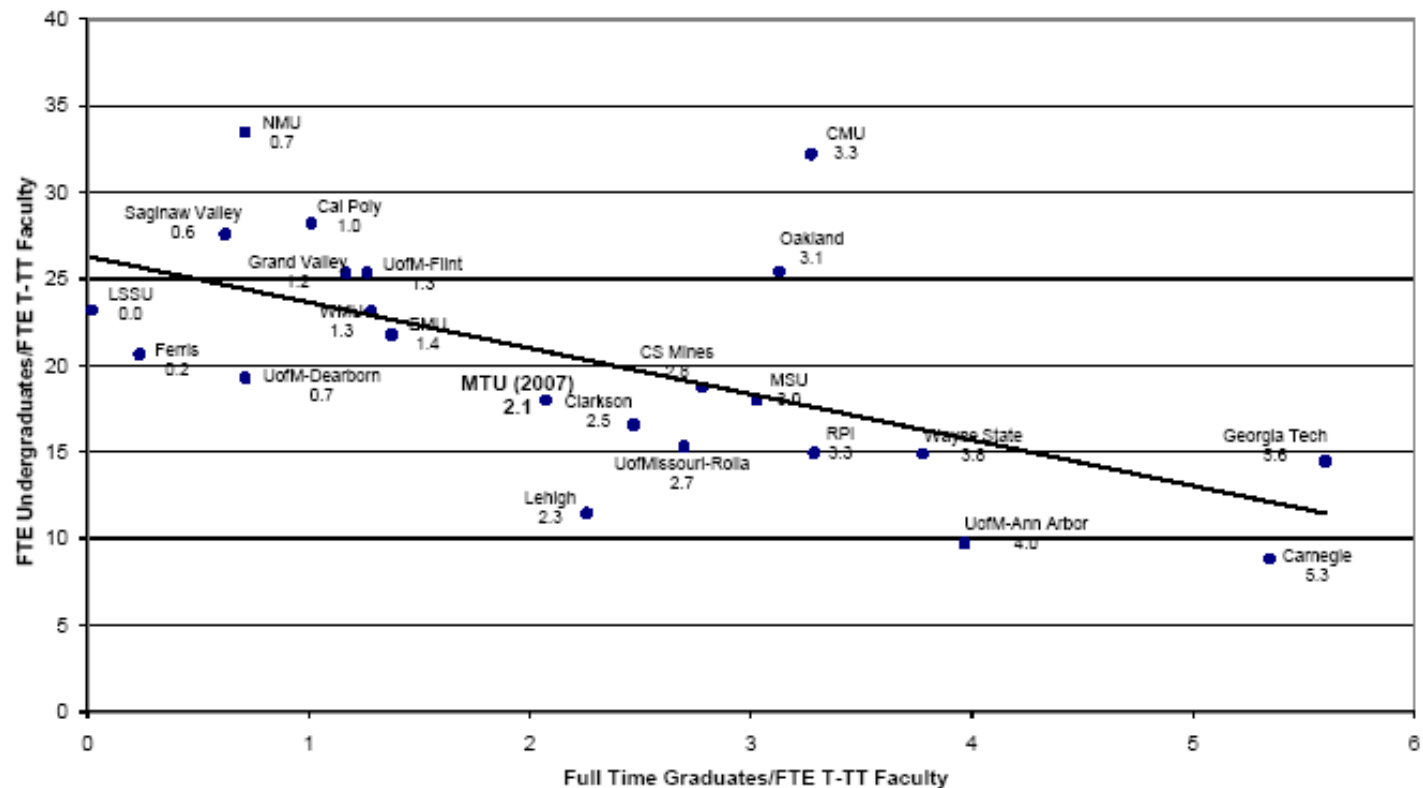
**Central Michigan University**

**Purdue University**

Source: Michigan Tech Cancellation Survey

## **ENROLLMENT A BALANCING ACT**

**Full Time Graduates vs. FTE Undergraduates**  
**Michigan Public Universities and Michigan Tech Benchmark Universities**  
**Fall 2006**

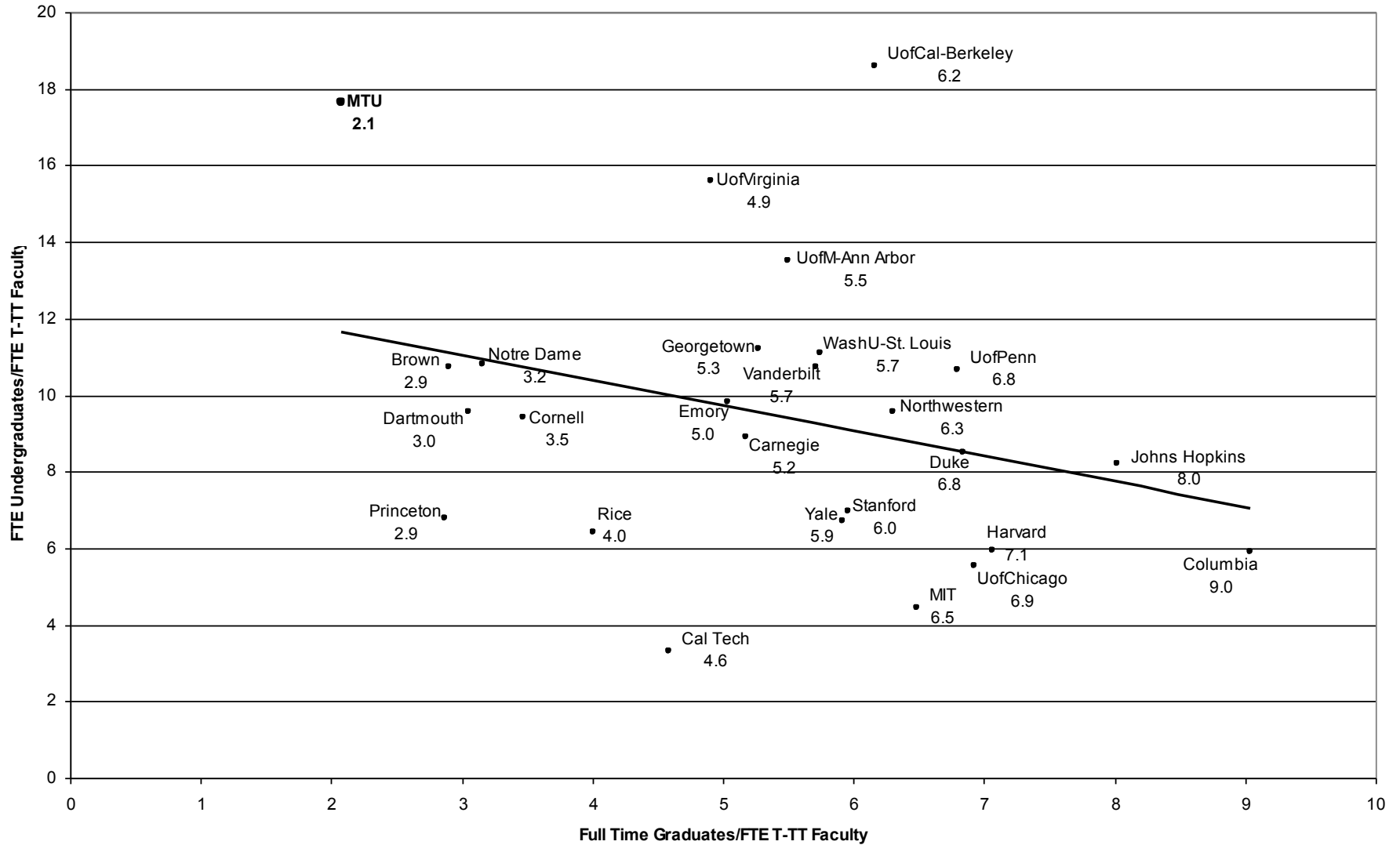


NOTE: First-professional students and medical faculty are excluded from these figures.  
 Figure for MTU is for 2007 only. All other figures are for 2006.

OIA: 2-3-08  
 J:\temp\Benchmarking 2006 Students-TT Faculty Reed upd 2007.xlsx

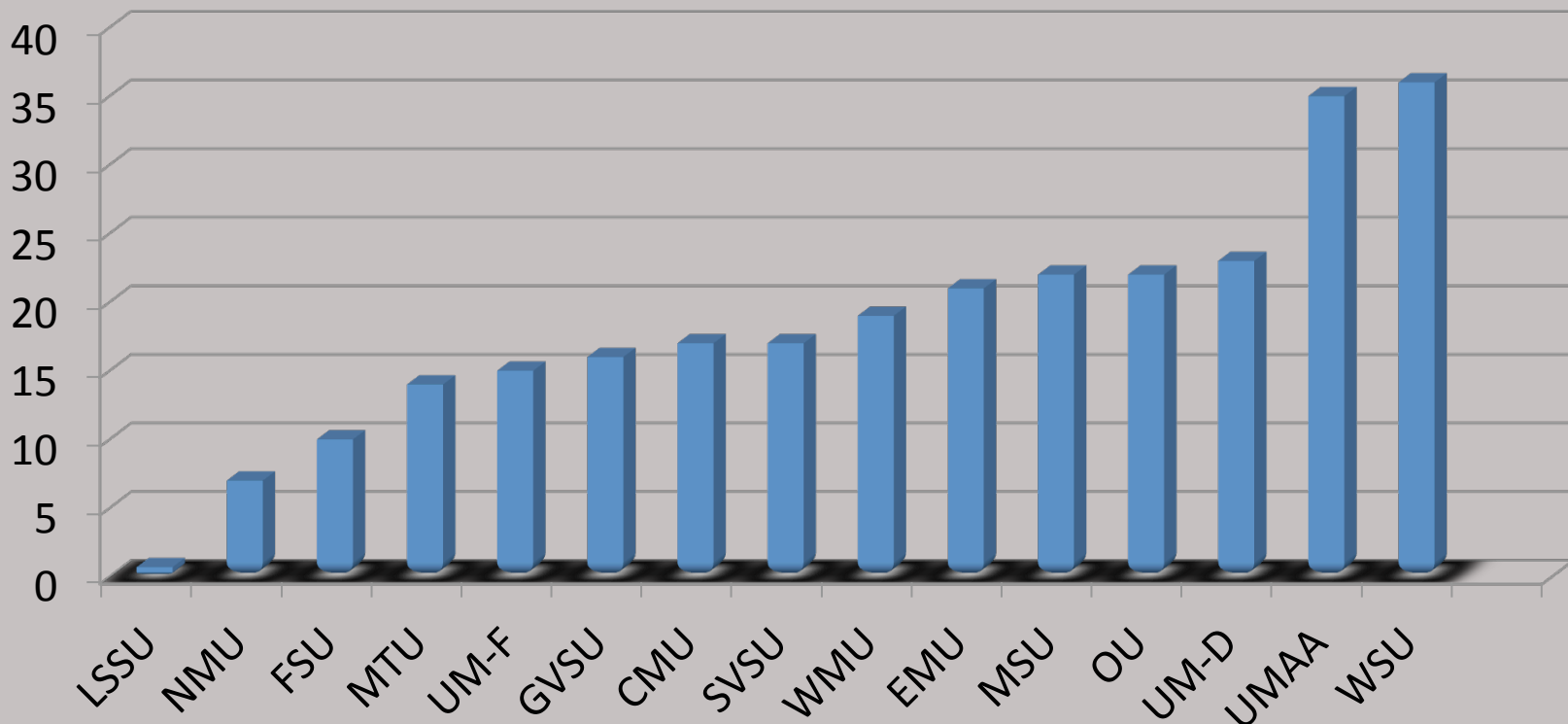
SOURCE: IPEDS Data

# **Full Time Graduates vs. FTE Undergraduates** **Michigan Tech and U.S. News 2007 Top 25 National Universities** **Fall 2005**



# Michigan Tech

## Percent of Graduate Students at Michigan Universities





## Graduate Applications & Accepts

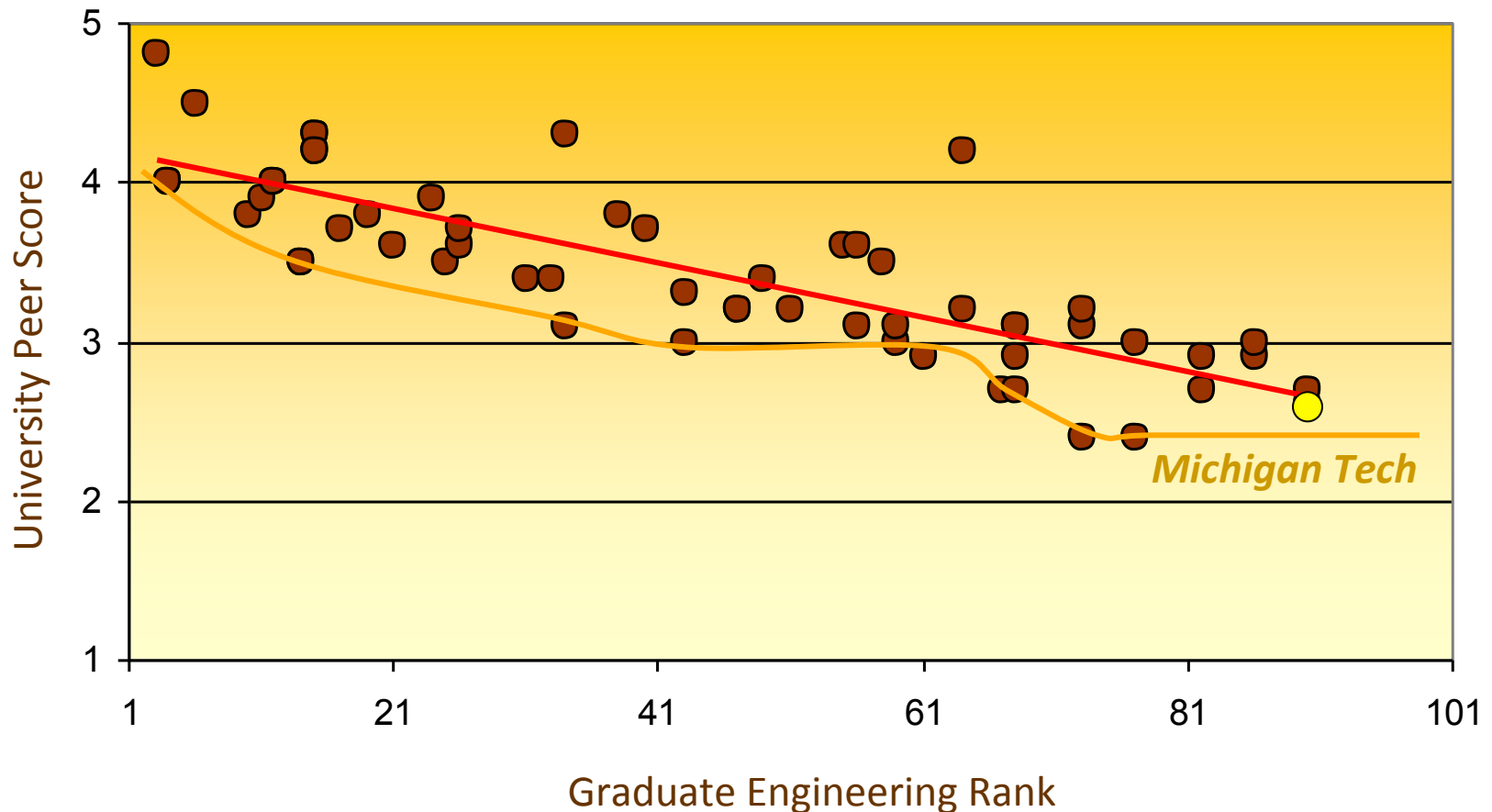
(week 25)

	<u>2007</u>	<u>2008</u>
All Applicants	1379	1558
All Accepts	187	248
Michigan Tech Applicants	70	22
Michigan Tech Accepts	31	10



# RANKINGS

# University Peer Scores for Top-ranked Graduate Schools (Engineering)





# ***MichiganTech***

**For Michigan Tech to become a Top 50 public.....**

- **.3 increase in reputational score (5.0 scale)**
- **We're top 50 by virtually all other measures**
- **Reputational score = “peer assessment”**
- **The key is faculty achievement and reputation**

## **U.S. News & World Report Best Graduate Schools**

- Environmental Engineering 25
- Materials 42
- Civil Engineering 49
- Mechanical Engineering 54

\*Other disciplines are not evaluated



## *U.S. News and World Report* Rankings - Selected Universities

- 22. Carnegie Mellon
- 35. Georgia Tech
- 44. Rensselaer (RPI)
- 71. Michigan State
- 75. Colorado School of Mines
- 96. Illinois Institute of Technology
- 118. Missouri University of Science and Technology
- 124. **Michigan Tech** and Clarkson (tie)

# ***Michigan Tech***

## **Michigan Tech Select Partnerships**





**RESEARCH, SCHOLARSHIP,  
DEVELOPMENT**

## **Role of a University**

A living system where:

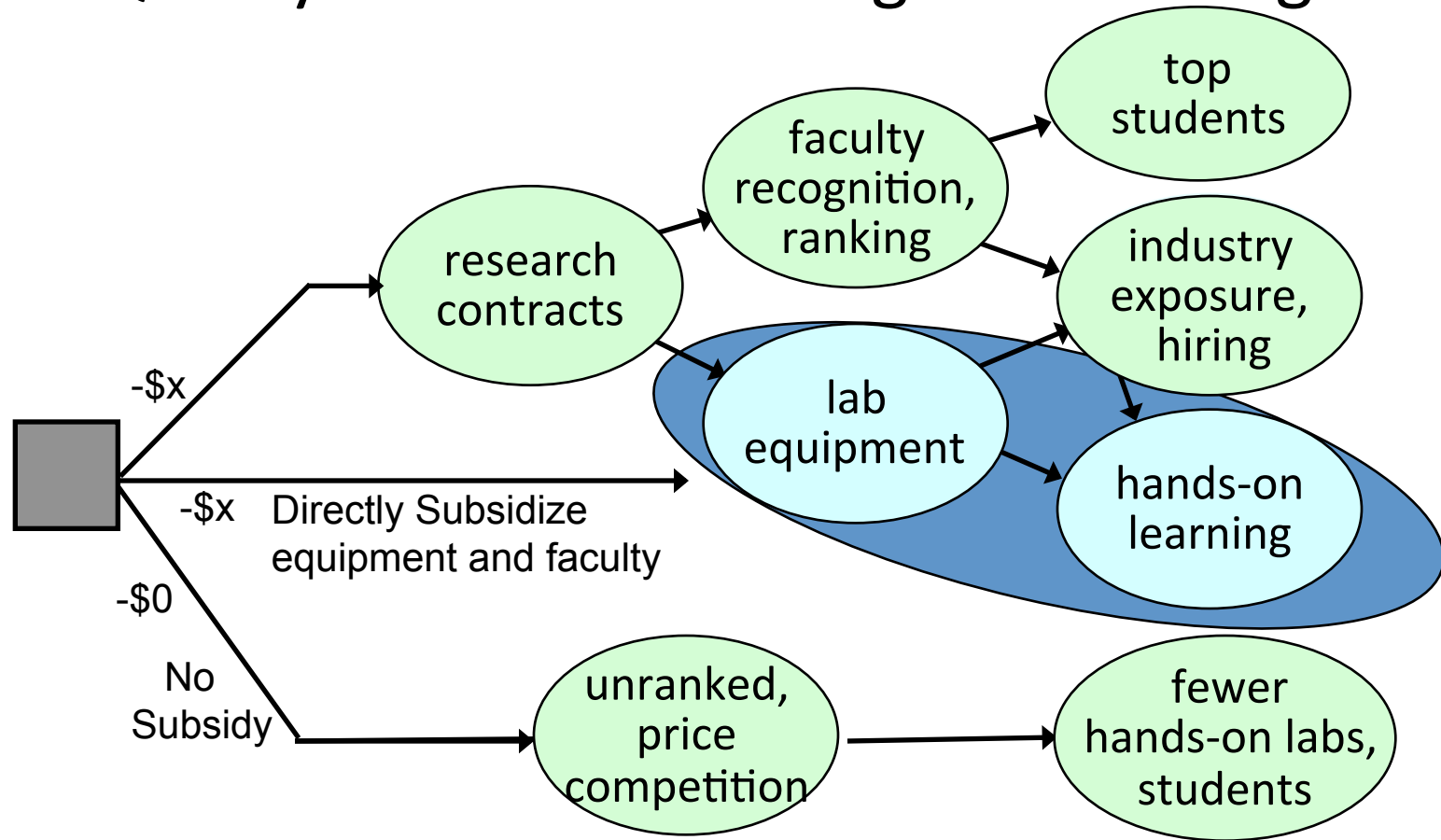
- Knowledge is transmitted from one generation to the next.
- Knowledge is created.



## Michigan Tech's Special Role

- Educated People – People who can develop, understand, apply, manage and communicate science and technology (STEM).
- Create new knowledge – Transform it to benefit people.

# Research and Development Maintains Quality Hands-on Undergrad Learning



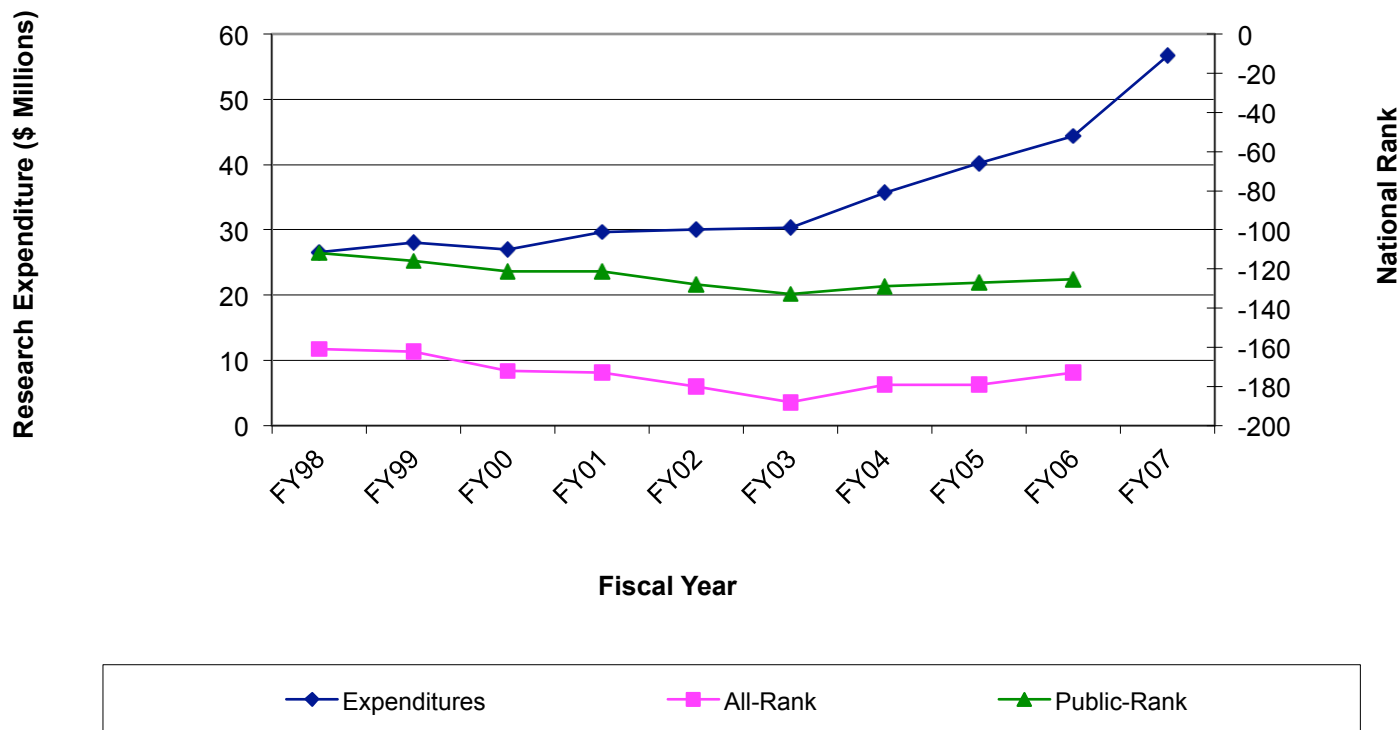




## FY06 National Rankings

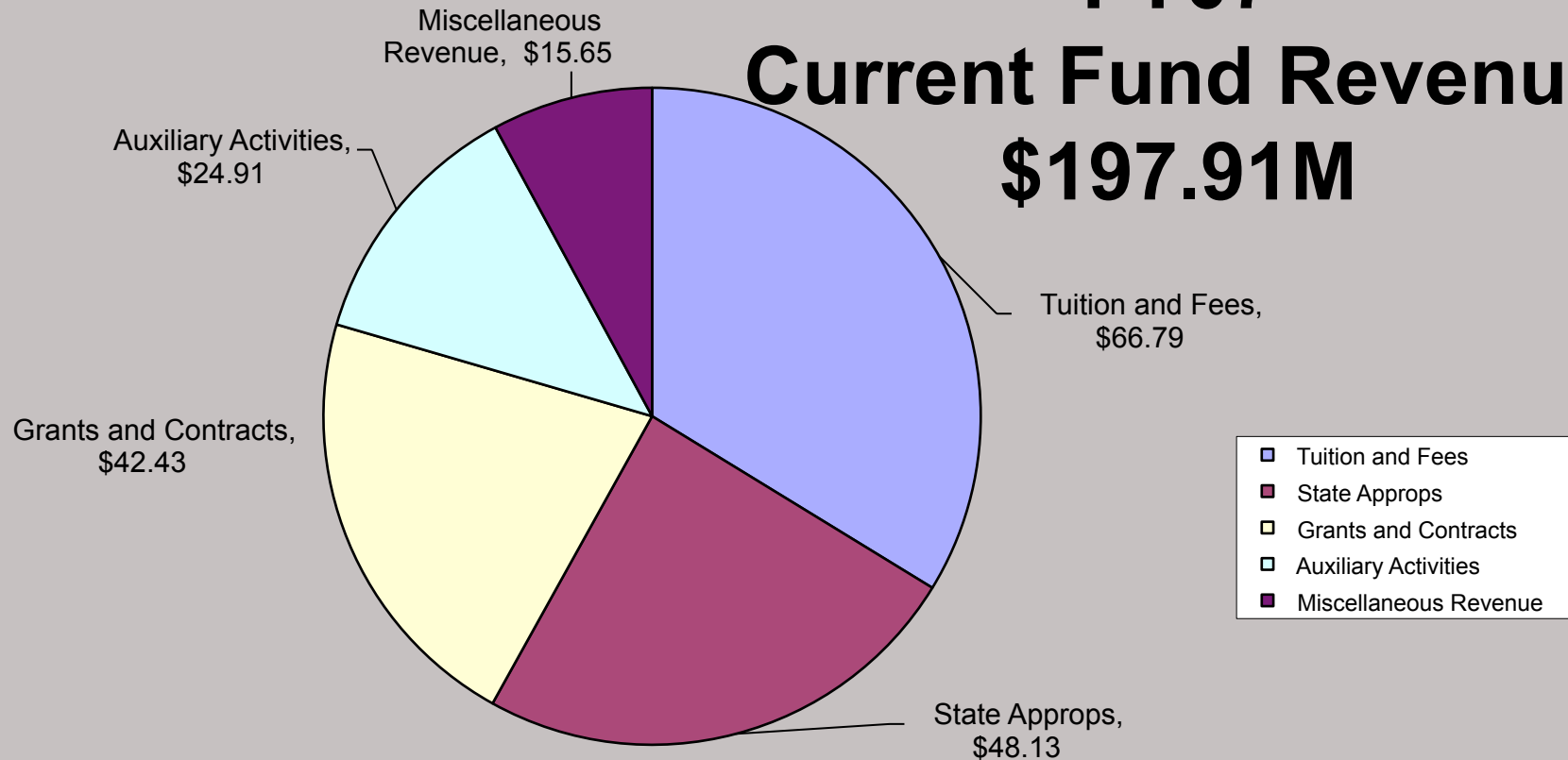
- Michigan Tech now **173<sup>rd</sup>**, up from 179<sup>th</sup> **among 600 research universities**
- Now **125<sup>th</sup>**, up from 127<sup>th</sup>, **among public universities**, and 75<sup>th</sup>, up from 79<sup>th</sup>, in universities without medical schools
- Our highest ranked discipline: **Mechanical Engineering, now 21<sup>st</sup>**
- **Mathematical Sciences**: first appearance in the rankings at **79<sup>th</sup>**

## NSF NATIONAL RANK



**FY07**

## **Current Fund Revenue \$197.91M**



## **ENDOWMENT**

# ***MichiganTech***

## **Endowment Per Student - Michigan**

• U. of Michigan	\$ 177,229
• Michigan State	29,619
• Kettering	24,402
• <b>Michigan Tech</b>	
<b>11,715</b>	
• Wayne State	10,031
• Western Michigan	8,386
• Saginaw Valley State	3,949

Source: Princeton Review; America's Best Colleges (as of 6/30/07)

# ***MichiganTech***

## **Endowment Per Student - National**

• Carnegie Mellon	\$ 165,249
• Rensselaer Polytechnic	129,212
• Clarkson University	60,705
• Colorado School of Mines	48,114
• Missouri – Rolla	22,643
• Milwaukee School of Eng.	19,943
• <b>Michigan Tech</b>	<b>11,715</b>



# CAMPAIGN REPORT



## Campaign Total To Date

FY 08 gifts	\$ 13.03 million
FY07 gifts	28.35
FY08 corporate research	3.61
FY 07 corporate research	6.21
Selected FY 06 gifts	+ <u>11.80</u>
	63.0 million
(discounts of planned gifts)	- <u>3.0</u>
	\$ 60.0 million





**OUR GOAL:**

**TECHNOLOGICAL RESEARCH UNIVERSITY  
FOR THE WORLD**



## **Michigan Tech: A Partial Environmental Scan**

- State Funding
- FY09 Budget Priority
- Student Recruiting
- Enrollment: A Balancing Act
- Rankings
- Research, Scholarship, Development
- Endowment
- Campaign Report

## **What Can You Do?**

- Continue to promote Michigan Tech
- Do what you do best
- Help me to learn to make things better
- Fill out the evaluation of the President