

YOU DESERVE A BREAK

MichiganTech

Housing and Dining Services

Winter Break Information for Hillside Place • December 2011



QUESTIONS

If you have any questions regarding this information, please see your Community Assistant, email housing@mtu.edu, or give one of the following offices a call:

Housing 906-487-2682
Facilities 906-487-2740
Dining Services 906-487-2664

RECEPTION DESKS

All residence hall reception desks will close at **12:00 noon on Saturday, December 17, 2011**, and will reopen at **12:00 noon on Saturday, January 7, 2012**.

There will be **no mail service during the break**. All mail will be held and slotted when the desks reopen.

All checked-out items must be returned to the desk by **8:00PM on Thursday, December 15, 2011**.



LOCKING UP

There is no extra charge to stay over the break. Power and heat will remain on during the entire break.

All hall entrances will be locked at 8:00PM on Friday, December 16. You can enter the building using your student ID while the doors are locked. The entrance doors will reopen at **12:00 noon on Saturday, January 7, 2012**.

ROOM FREEZE

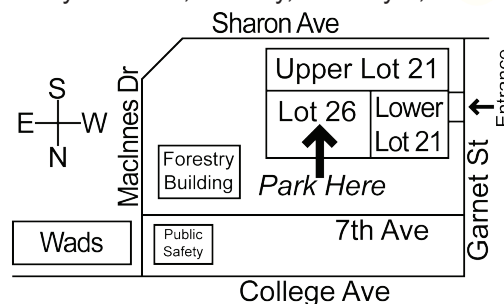
Only person-to-person room swaps are permitted from now until the second week of spring semester.

PARKING

Residents who wish to leave their cars on campus must park in the northwest section of commuter Lot 26, located off Garnet Street, by Sunday, December 18, 2011 at 7:00AM. Your car will be ticketed and/or towed away if it is not moved, even if you are staying over break.

If you will be staying and will be **regularly** using your car, you may visit the Department of Public Safety & Police Services to obtain a temporary parking pass for Lot 15E (near the base of McNair Hill) for use during break.

Vehicles must be returned to their regular lots by 11:00 PM, Sunday, January 8, 2012.



FINALS WEEK MEAL SCHEDULE

The Dining Halls will close after lunch in DHH and Wadsworth, and after Dinner (6:00 PM) in McNair on Friday, December 16.

Wadsworth Dining Services will reopen for lunch and dinner on Sunday, January 8. All 3 dining halls will be open for breakfast on Monday, January 9 at the normal serving hours.

Douglass Houghton Hall

December 12 - 15	Mon - Thurs
Continental Breakfast	7:00AM – 10:30AM
Lunch	10:30AM – 1:30PM
Deli Hour	1:30PM – 4:00PM

December 16	Friday
Continental Breakfast	7:00AM – 10:30AM
Lunch	10:30AM – 1:30PM

McNair Hall

December 12 - 15	Mon - Thurs
Continental Breakfast	7:00AM – 10:30AM
Lunch	10:30AM – 1:30PM
Deli Hour	1:30PM – 4:00PM
Dinner	4:00PM – 9:00PM

December 16	Friday
Continental Breakfast	7:00AM – 10:30AM
Lunch	10:30AM – 1:30PM
Deli Hour	1:30PM – 4:00PM
Dinner	4:00PM – 6:00PM

Wadsworth Hall

December 12 - 15	Mon - Thurs
Breakfast	7:00AM – 9:00AM
Continental Breakfast	9:00AM – 10:30AM
Lunch	10:30AM – 1:30PM
Deli Hour	1:30PM – 4:00PM
Dinner	4:00PM – 6:00PM

December 16	Friday
Breakfast	7:00AM – 9:00AM
Continental Breakfast	9:00AM – 10:30AM
Lunch	10:30AM – 1:30PM

Friday dinner served in McNair Hall only!

There will be no Dining Service over the break.

Block meal plan meals do not roll over into Spring Semester!

CAMPUS CAFÉ

December 16 CLOSING at 1:00AM

Reopens Sunday, January 8, 2012 at 5:00PM

AFTERMATH CAFÉ & FUSION

December 16 CLOSING at 1:30PM

Reopens Monday, January 9, 2012

MUB FOOD MALL

December 19 - 23 7:30AM – 3:00PM

Dec 24 - Jan 1 CLOSED

January 2 - 6 7:30AM – 3:00PM

January 7 - 8 CLOSED

Reopens Monday, January 9, 2012

LIBRARY CAFÉ

December 19 - 23 8:00AM – 3:00PM

Dec 24 - Jan 1 CLOSED

January 2 - 6 8:00AM – 3:00PM

January 7 - 8 CLOSED

Reopens Monday, January 9, 2012

CLEANING

The custodial staff will be entering your apartment over break to clean. Please be sure to remove all personal items from the bathroom, kitchen, and common areas.

BRINGING A CAR BACK?

If you are bringing a vehicle to campus for the first time, please make sure to register online at:

<http://www.mtu.edu/publicsafety/parking/information/>

You may also go to the Department of Public Safety and Police Services to register your vehicle. Bring a picture ID and vehicle registration with you.

Michigan Technological University is an equal opportunity educational institution/equal opportunity employer.

ENERGY & ROOM SECURITY

Although electricity will NOT be turned off in resident rooms, energy conservation will be in effect during the break period. Facilities staff will be entering all rooms to make sure windows are closed.

- Unplug any electronics.
- Refrigerators should be cleaned out.
- Take out all garbage.
- Turn your thermostat down.
- Close and lock your windows.
- Turn off your lights.

CHECK OUT

If you are leaving and will not be returning for the spring semester, you must see your CA who will assist you in properly checking out. When you are finished checking out of your room, please bring the following items to the McNair Reception Desk:

- SIGNED Yellow Checkout Form

All students leaving must be completely checked out of their rooms by no later than **12:00 noon on Saturday, December 17**. If you are a graduating senior or if you can't meet the check out deadline, please contact your CA immediately.

Failure to checkout properly may result in a \$25.00 improper check-out, and/or room and board charges for the first week of the spring semester.

To ensure proper mail forwarding, you **MUST** complete the top portion of your yellow check-out form.

BOOK BUYBACK

During Finals week, the Campus Bookstore will be buying back text books in the Reception Desk Lobbies 10:00AM - 4:00PM and at the Campus Bookstore 8:30AM - 5:00PM. Locations are as follows:

DHH: Monday & Wednesday
McNair: Tuesday & Thursday
Wads: Monday - Thursday
Bookstore: Monday - Friday

QUIET HOURS

Beginning Saturday, December 10 at midnight, **22 hour quiet hours** begin and continue until Friday, December 16 at 12:00 noon.

Consideration hours are in effect 12:00 noon - 1:00PM and 5:00PM - 6:00PM.

EMPTY SPACE IN YOUR UNIT?

If you have an empty space in your apartment and your **unit is single gendered**, you will be assigned a new student as a roommate.

You will be provided with your new roommate's information by email, letter, or phone call depending on when they complete their housing application. Please note that students may be placed after the first two weeks if needed.

If you have an empty space in your apartment and your **unit is co-ed**, please contact Housing & Residential Life at 906-487-2682 for further instructions.

AQUARIUMS AND PLANTS

Staff is not available to feed your fish or water your plants. Please use a vacation feeder and water your plants thoroughly.

DECORATIONS

Holiday decorations may be displayed according to the living guide. See your CA for more info.

All holiday decorations must be removed from your hall by 12:00 noon, Saturday, December 17.