

YOU DESERVE A BREAK

Housing and Dining Services

Winter Break Information • December 2011



QUESTIONS

If you have any questions regarding this information, please see your Resident Assistant, email housing@mtu.edu, or give one of the following offices a call:

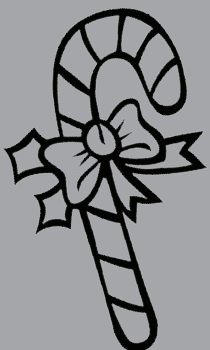
Housing 906-487-2682
Facilities 906-487-2740
Dining Services 906-487-2664

RECEPTION DESKS

All residence hall reception desks will close at **12:00 noon** on **Saturday, December 17, 2011**, and will reopen at **12:00 noon** on **Saturday, January 7, 2012**.

There will be **no mail service during the break**. All mail will be held and slotted when the desks reopen.

All checked-out items must be returned to the desk by **8:00PM** on **Thursday, December 15, 2011**.



LOCKING UP

Only residents requesting approval from Housing and Residential Life may remain in the residence halls during break.

All residence hall entrances will be locked at 8:00PM on Friday, December 16, 2011. Residents have swipe ID access to their hall ONLY until 12:00 noon on Saturday, December 17, 2011.

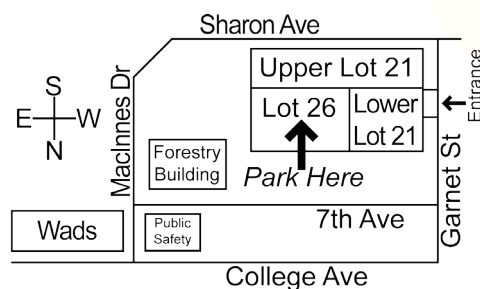
The halls will reopen at 12:00 noon on Saturday, January 7, 2012.

PARKING

Residents who wish to leave their cars on campus must park in the northwest section of commuter Lot 26, located off Garnet Street, by Sunday, December 18, 2011 at 7:00AM. Your car will be ticketed and/or towed away if it is not moved, even if you are staying over break.

If you will be staying and will be **regularly** using your car, you may visit the Department of Public Safety & Police Services to obtain a temporary parking pass for Lot 15E (near the base of McNair Hill) for use during break.

Vehicles must be returned to their regular lots by 11:00 PM, Sunday, January 8, 2012.



FINALS WEEK MEAL SCHEDULE

The Dining Halls will close after lunch in DHH and Wadsworth, and after Dinner (6:00 PM) in McNair on **Friday, December 16**.

Wadsworth Dining Services will reopen for brunch and dinner on **Sunday, January 8**.

All 3 dining halls will be open for breakfast on **Monday, January 9** at the normal serving hours.

Douglass Houghton Hall

December 12 - 15	Mon - Thurs
Continental Breakfast	7:00AM - 10:30AM
Lunch	10:30AM - 1:30PM
Deli Hour	1:30PM - 4:00PM

December 16	Friday
Continental Breakfast	7:00AM - 10:30AM
Lunch	10:30AM - 1:30PM

McNair Hall

December 12 - 15	Mon - Thurs
Continental Breakfast	7:00AM - 10:30AM
Lunch	10:30AM - 1:30PM
Deli Hour	1:30PM - 4:00PM
Dinner	4:00PM - 9:00PM

December 16	Friday
Continental Breakfast	7:00AM - 10:30AM
Lunch	10:30AM - 1:30PM
Deli Hour	1:30PM - 4:00PM
Dinner	4:00PM - 6:00PM

Wadsworth Hall

December 12 - 15	Mon - Friday
Breakfast	7:00AM - 9:00AM
Continental Breakfast	9:00AM - 10:30AM
Lunch	10:30AM - 1:30PM
Deli Hour	1:30PM - 4:00PM
Dinner	4:00PM - 6:00PM

December 16	Friday
Breakfast	7:00AM - 9:00AM
Continental Breakfast	9:00AM - 10:30AM
Lunch	10:30AM - 1:30PM

Friday dinner served in McNair Hall only! There will be no Dining Service over the break.

CAMPUS CAFÉ

December 16 CLOSING at 1:00AM
Reopens Sunday, January 8, 2012 at 5:00PM

AFTERMATH CAFÉ & FUSION

December 16 CLOSING at 1:30PM
Reopens Monday, January 9, 2012

MUB FOOD MALL

December 19 - 23 7:30AM – 3:00PM
Dec 24 - Jan 1 CLOSED
January 2 - 6 7:30AM – 3:00PM
January 7 - 8 CLOSED
Reopens Monday, January 9, 2012

LIBRARY CAFÉ

December 19 - 23 8:00AM – 3:00PM
Dec 24 - Jan 1 CLOSED
January 2 - 6 8:00AM – 3:00PM
January 7 - 8 CLOSED
Reopens Monday, January 9, 2012

PRIVATE BATHS

If you live in North Wadsworth Hall or in the West Wadsworth First Floor Suites, the custodial staff will be entering your room over break to deep clean your private bathroom. Please be sure to remove all personal items from the bathroom areas.



ENERGY & ROOM SECURITY

Energy conservation will be in effect during the break period.

- Unplug any electronics.
- Take out all garbage.
- Turn your thermostat down.
- Close and lock your windows.
- Turn off your lights.
- Lock your door.

Facilities staff will be entering all rooms to verify windows have been closed and thermostats have been turned down.

CHECK OUT

If you are leaving and will not be returning for the spring semester, you must see your RA who will assist you in properly checking out. When you are finished checking out of your room, please bring the following items to your Reception Desk:

- Room Key/Mailbox Key/Bathroom Key
- SIGNED Yellow Checkout Form

All students leaving must be completely checked out of their rooms by no later than **12:00 noon on Saturday, December 17**. If you are a graduating senior or if you can't meet the check out deadline, please contact your RA immediately.

Failure to checkout properly may result in a \$25.00 improper check-out and a \$50.00 core change charge, and/or room and board charges for the first week of the spring semester.

To ensure proper mail forwarding, you **MUST** complete the top portion of your yellow check-out form.

QUIET HOURS

Beginning Saturday, December 10 at midnight, **22 hour quiet hours** begin and continue until Friday, December 16 at 12:00 noon.

Consideration hours are in effect
12:00 noon - 1:00PM
and 5:00PM - 6:00PM.

Ask your RA for more details.

AQUARIUMS AND PLANTS

Staff is not available to feed your fish or water your plants. Please use a vacation feeder and water your plants thoroughly.

DECORATIONS

Holiday decorations may be displayed according to the living guide. See your RA for more info.

All holiday decorations must be removed from your hall by 12:00 noon, Saturday, December 17.



Happy Holidays



EMPTY SPACE IN YOUR ROOM?

If you have an empty space in your room, you will be assigned a new student as a roommate. Prior to leaving for break, you must prepare your room by clearing half of the room.

You will be provided with your new roommate's information by email, letter, or phone call depending on when they complete their housing application. Please note that students may be placed at any time during the semester.


Facilities staff will be entering your room over the break to clean the space for the new resident. If you have not cleared the space, you will be charged \$100.00.

BRINGING A CAR BACK?

If you are bringing a vehicle to campus for the first time, please make sure to register online at:

<http://www.mtu.edu/publicsafety/parking/information/>

You may also go to Public Safety and Police Services to register. Picture ID and vehicle registration are required.



DAMAGE BILL

If you live in a house that has received community damage charges, you will be billed a percentage of those charges and be notified of your fee due.

If the damage fee due is less than \$1.00 per person, then that cost will be rolled over to the following semester. At the end of spring semester, if the cost is still less than \$1.00 per person, no damage due amount will be collected.

If you **do owe a damage fee** for fall semester, you can pay this at the **reception desk**. This must be done no later than **Thursday, December 15**. If you have not paid the damage due amount by this date, a University bill will be generated at a minimum cost of \$5.00.

BOOK BUYBACK

During Finals week, the Campus Bookstore will be buying back text books in the Reception Desk Lobbies 10:00AM - 4:00PM and at the Campus Bookstore 8:30AM - 5:00PM. Locations are as follows:

DHH: Monday & Wednesday
McNair: Tuesday & Thursday
Wads: Monday - Thursday
Bookstore: Monday - Friday

ROOM FREEZE

Monday, December 5 begins the empty room freeze. This room freeze continues through the second week of spring semester. Person-to-person room swaps are still permitted.

End of semester moves are allowed if you are taking an empty space, not an empty room, and only if arrangements to do so are approved by December 5 by Housing and Residential Life.

WINTER BREAK HOUSING

Students who must stay for winter break or plan to leave after December 17 at noon may remain in their rooms if they have requested permission at www.mtu.edu/housing and have been approved.

The deadline to make this request is **Wednesday, December 14**. The building will be locked 24/7 during break and only those residents who are granted permission to stay will have access.

Students who plan to arrive before the residence halls reopen on January 7 must also request permission at www.mtu.edu/housing.

The deadline to make this request is **Wednesday, December 14**. Only residents who are granted permission to arrive early will have building access.

There will be no meal or mail service over the winter break period. However, the kitchenettes will be open for use. There is a **\$14 per night charge** for residents who stay during the recess period, leave late, or arrive early.

IRHC RIDEBOARD

Check out Michigan Tech's very own Rideboard.

Visit it at: <http://www.irhc.mtu.edu/orb/>

Do you need a ride someplace for break? You can post a ride request for others to see.

Are you making a roadtrip and looking for an extra rider? Post your trip and others will find you.

Commuting to Tech and want to save gas? Make a carpool listing today.

Michigan Tech

Michigan Technological University is an equal opportunity educational institution/equal opportunity employer.