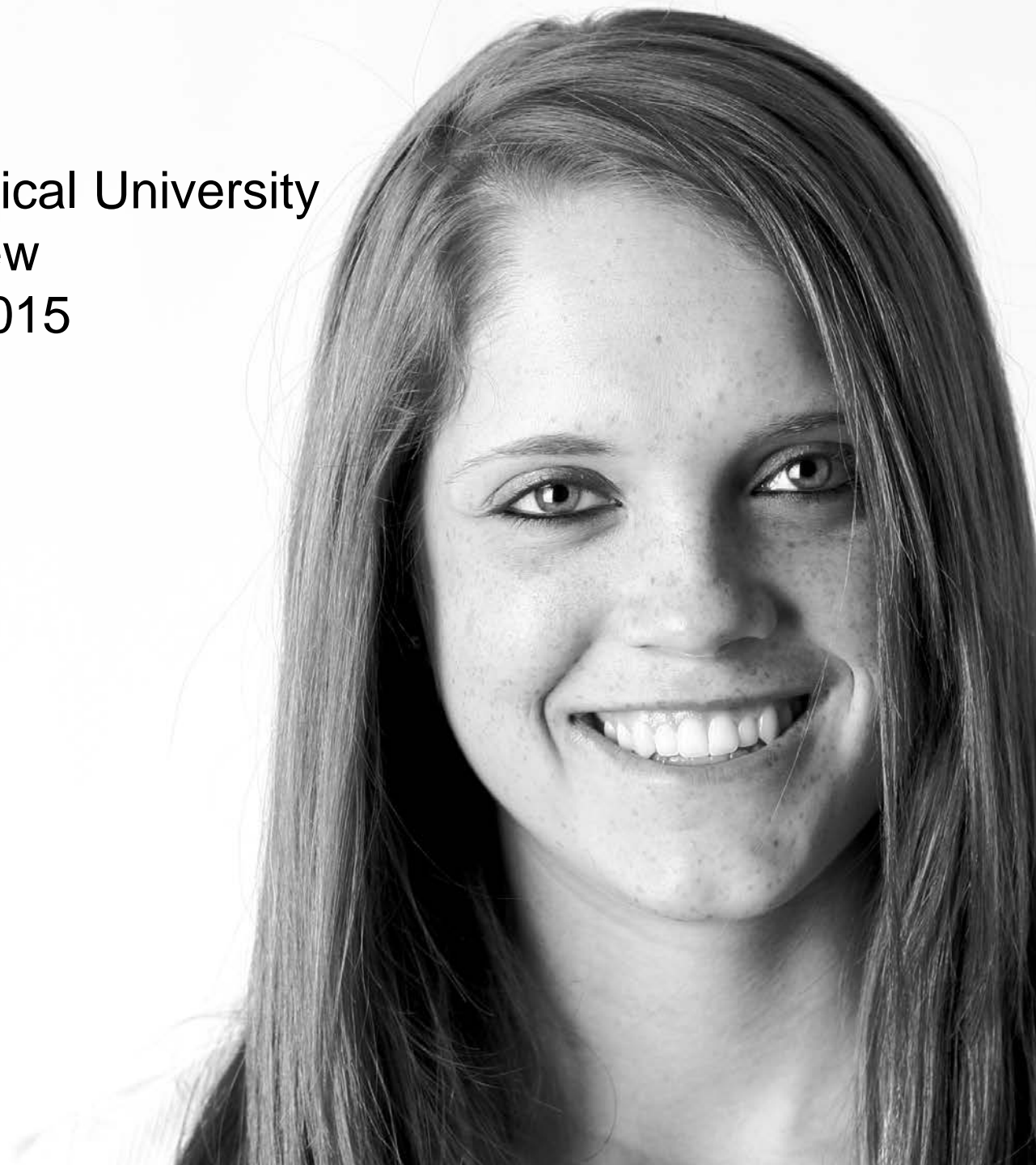


Michigan Technological University  
Overview  
July 1, 2015



# Michigan Tech's Wheelhouse

Develop, Understand, Apply,  
Manage and Communicate:

Science, Technology, Engineering, and  
Mathematics

# What's working?

- Enrollment at 7,106 – third highest since 1983
- 96 percent placement rate
- Graduates report median starting salary of \$60,000 (98<sup>th</sup> percentile nation wide)
- Ratio of loan payments to monthly earnings 3.5%

# The Smart Stuff on Tech

- Ranked among the top-tier of national public universities by *US News and World Report*
- 10<sup>th</sup> highest starting salaries in the nation according to Payscale
- 13:1 student-to-faculty ratio
- 94 percent of undergraduate classes are taught by professors
- Safest college campus in Michigan

# The Smart Stuff on Tech

- Ranked #22 nationally, #1 in Michigan, in Brookings Institute's value-added rankings of 4-year colleges
- Ranked #1 in Michigan, by Social Mobility Index
- Ranked #3 in nation for return on investment by BuzzFeed
- Ranked #1 *Snowiest College in the US* by AccuWeather

# Points of distinction

- 27 ACT composite, 3.6 High School GPA
- 60% graduating HS in top 20% of class
- 67% graduate in six years
- 85% retention rate freshman to sophomore
- 73% in-state students
- 30% live on campus

# Points of distinction

- Undergraduates spent 126,000 hours on paid research activity last year
- 33% of Michigan Tech patent filings contain the names of undergraduate students

Portrait 2035

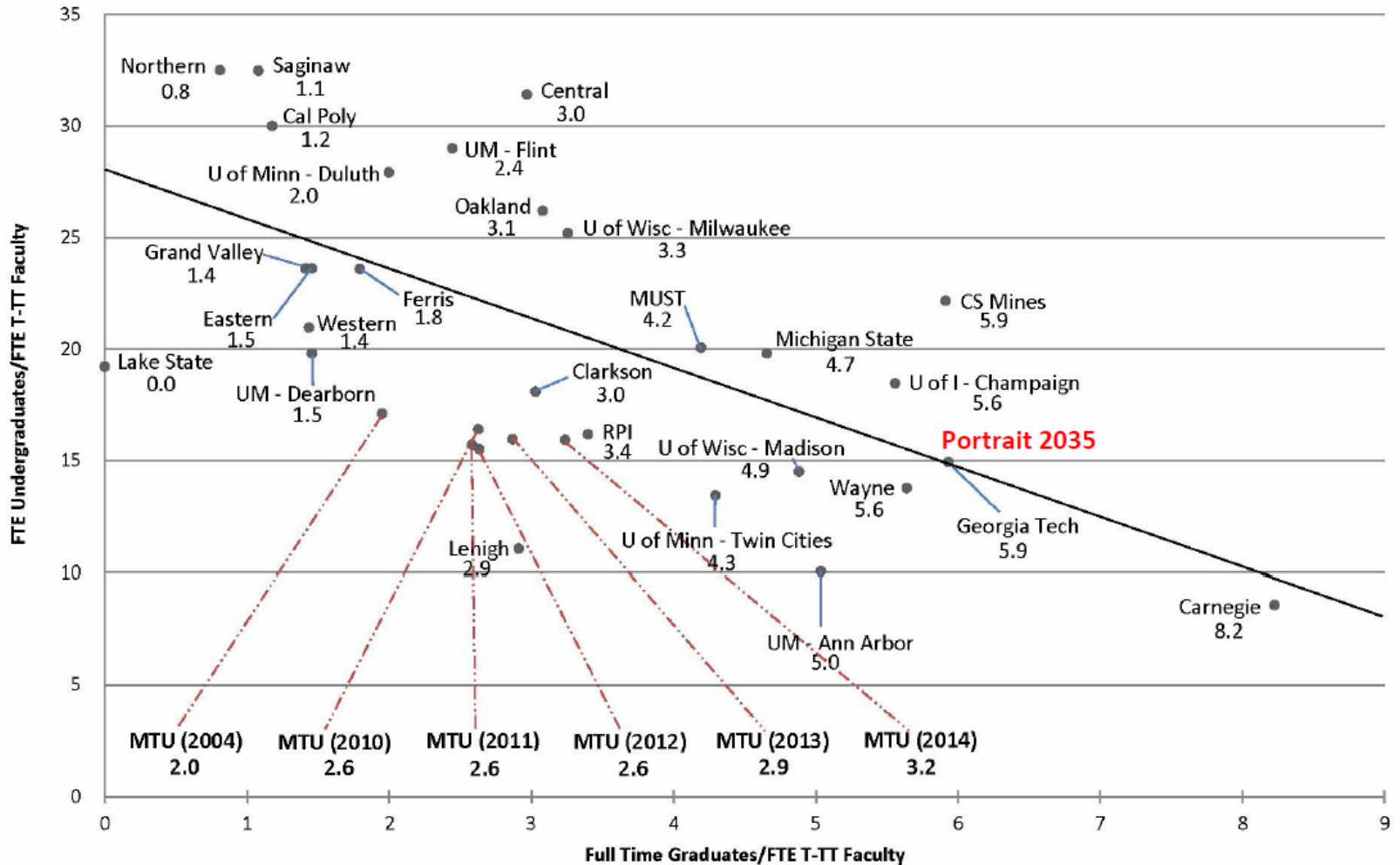




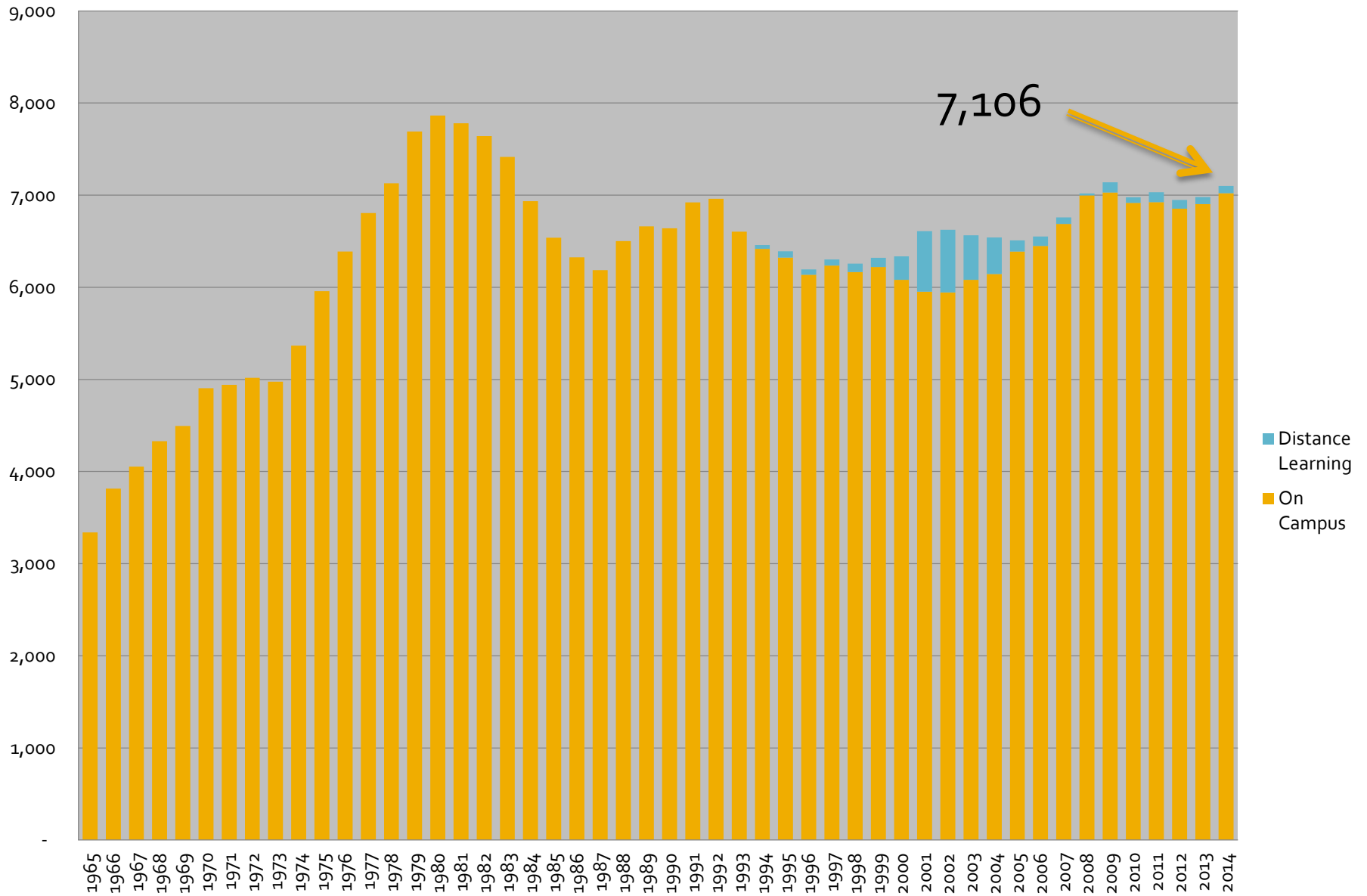
# Portrait 2035

- 40% of our faculty will be endowed positions
- 8,750 enrollment
  - 5,750 undergraduates
  - 2,000 masters
  - 1,000 PhD
  - 40% female
- Increase in research

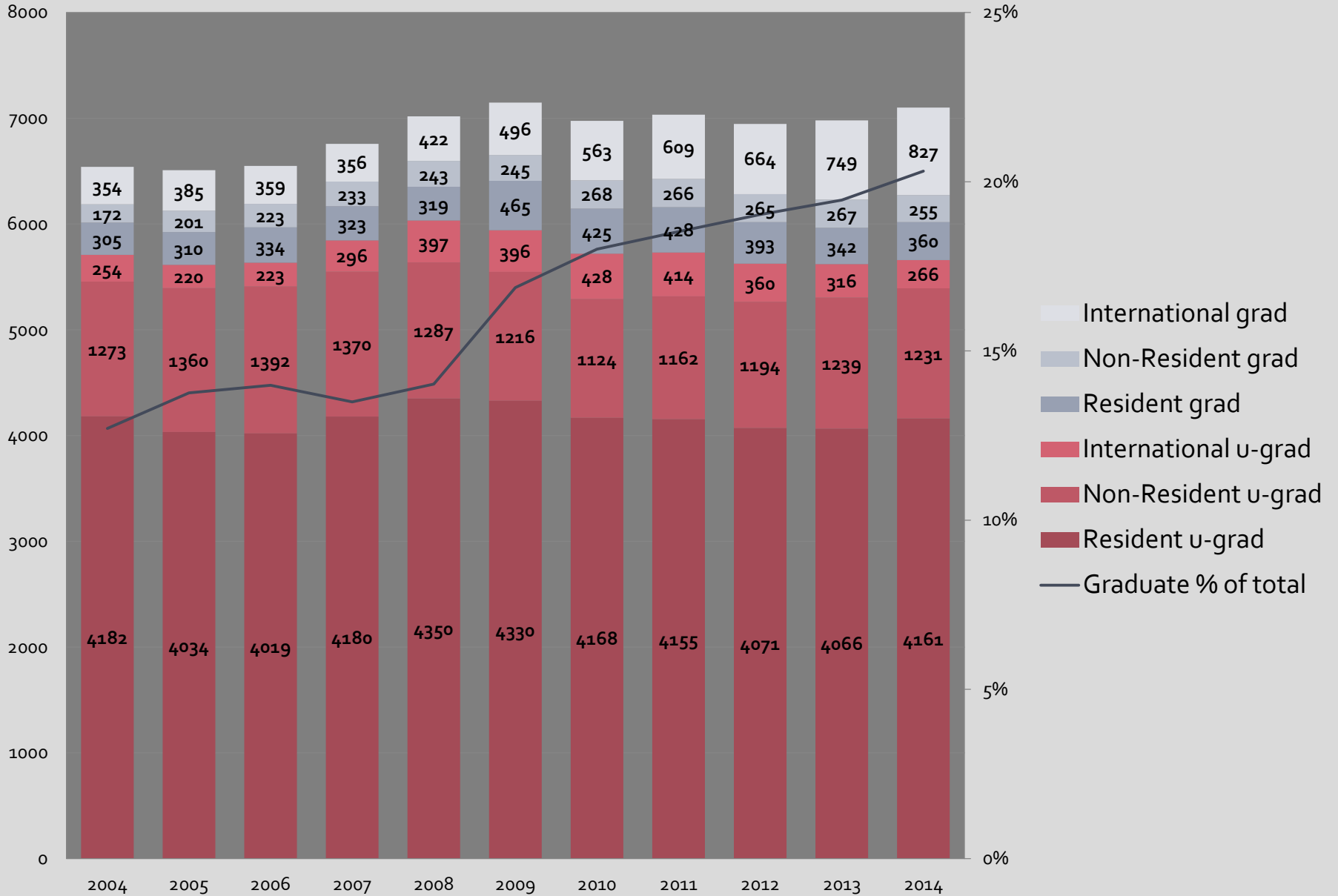
## Full Time Graduates Vs. FTE Undergraduates Michigan Public Universities and Michigan Tech Benchmark Universities



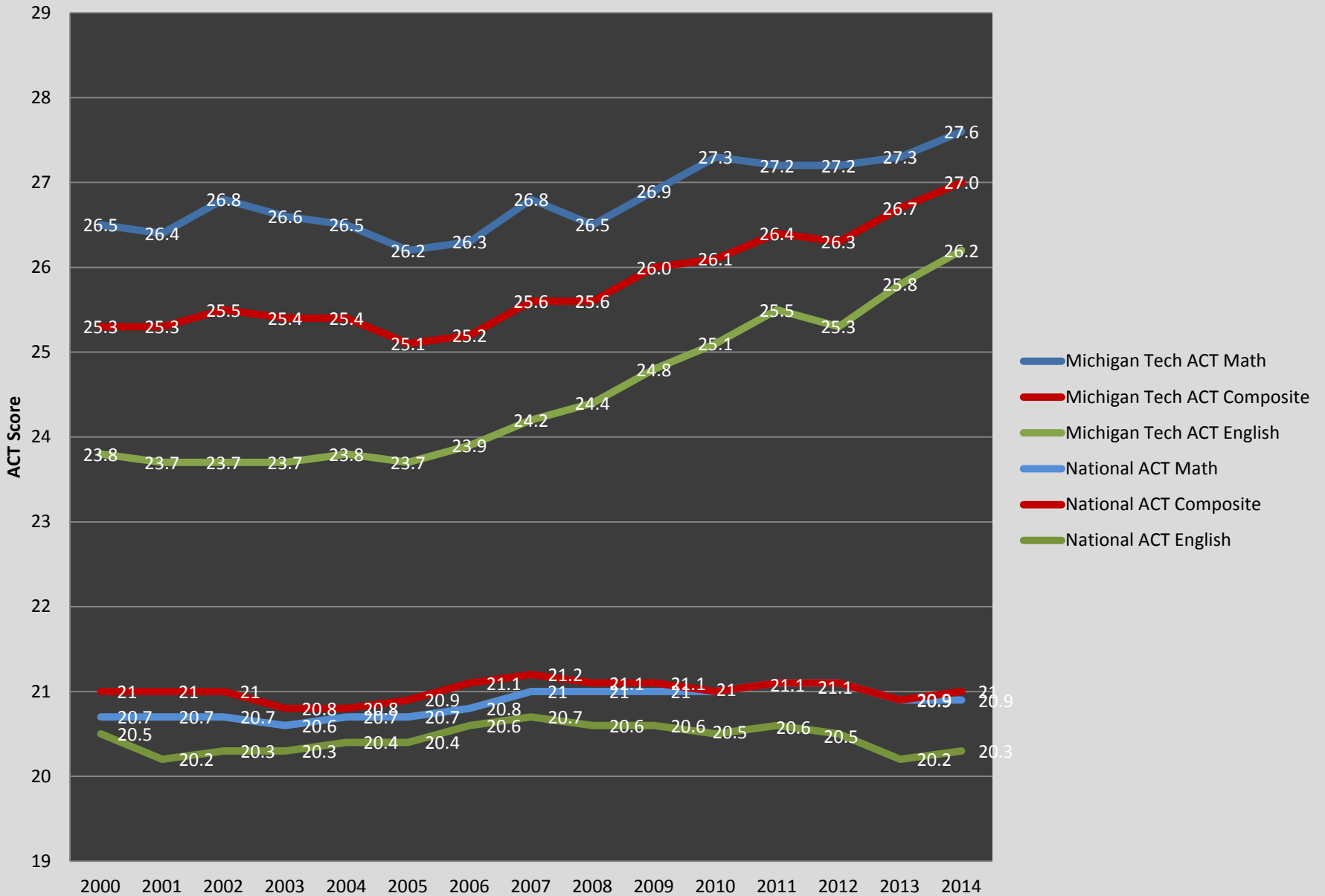
# Fall Enrollment 1965-2014



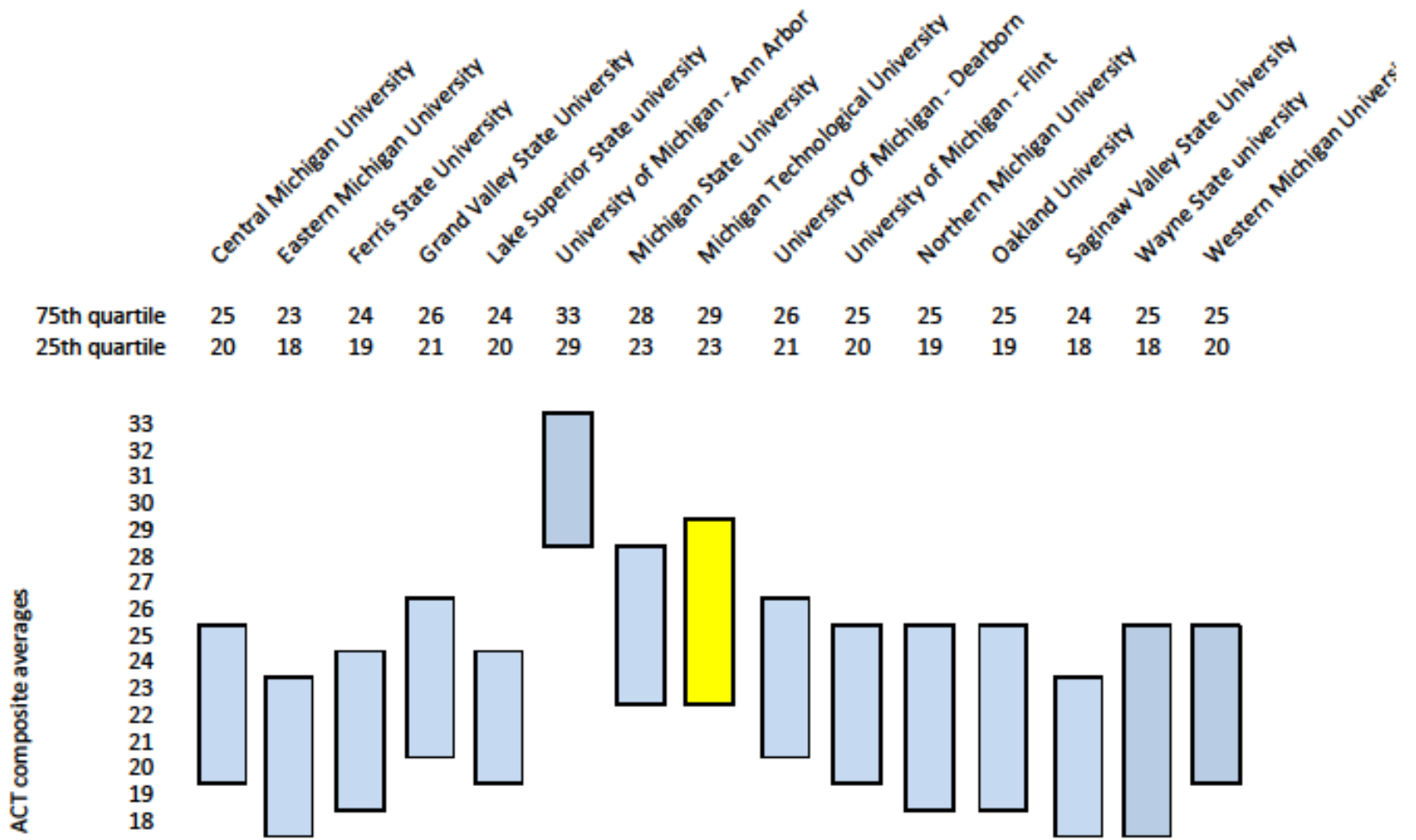
# Total Enrollment by Student Type



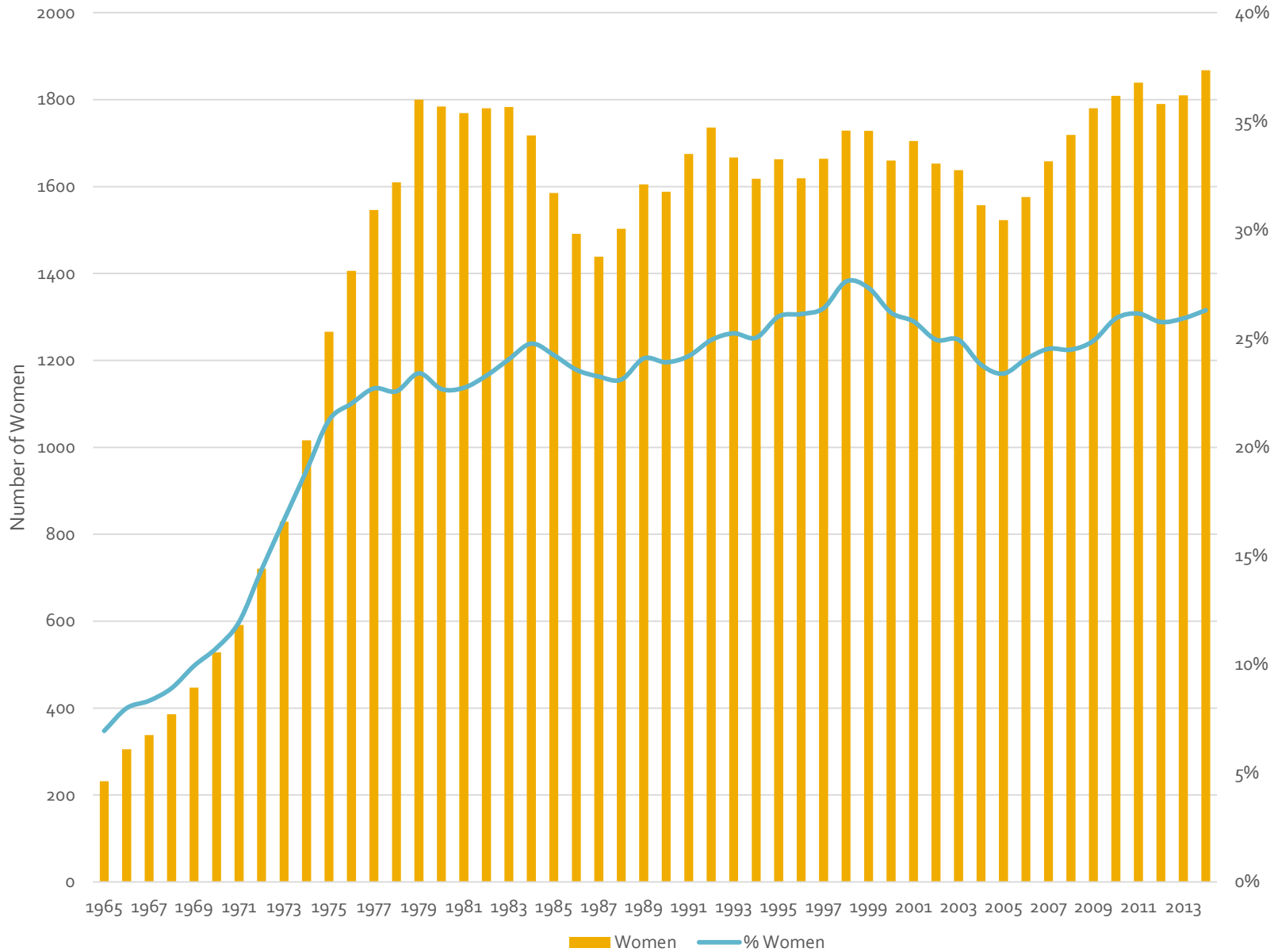
# Freshman Michigan Tech vs. National ACT Scores 2000-2014



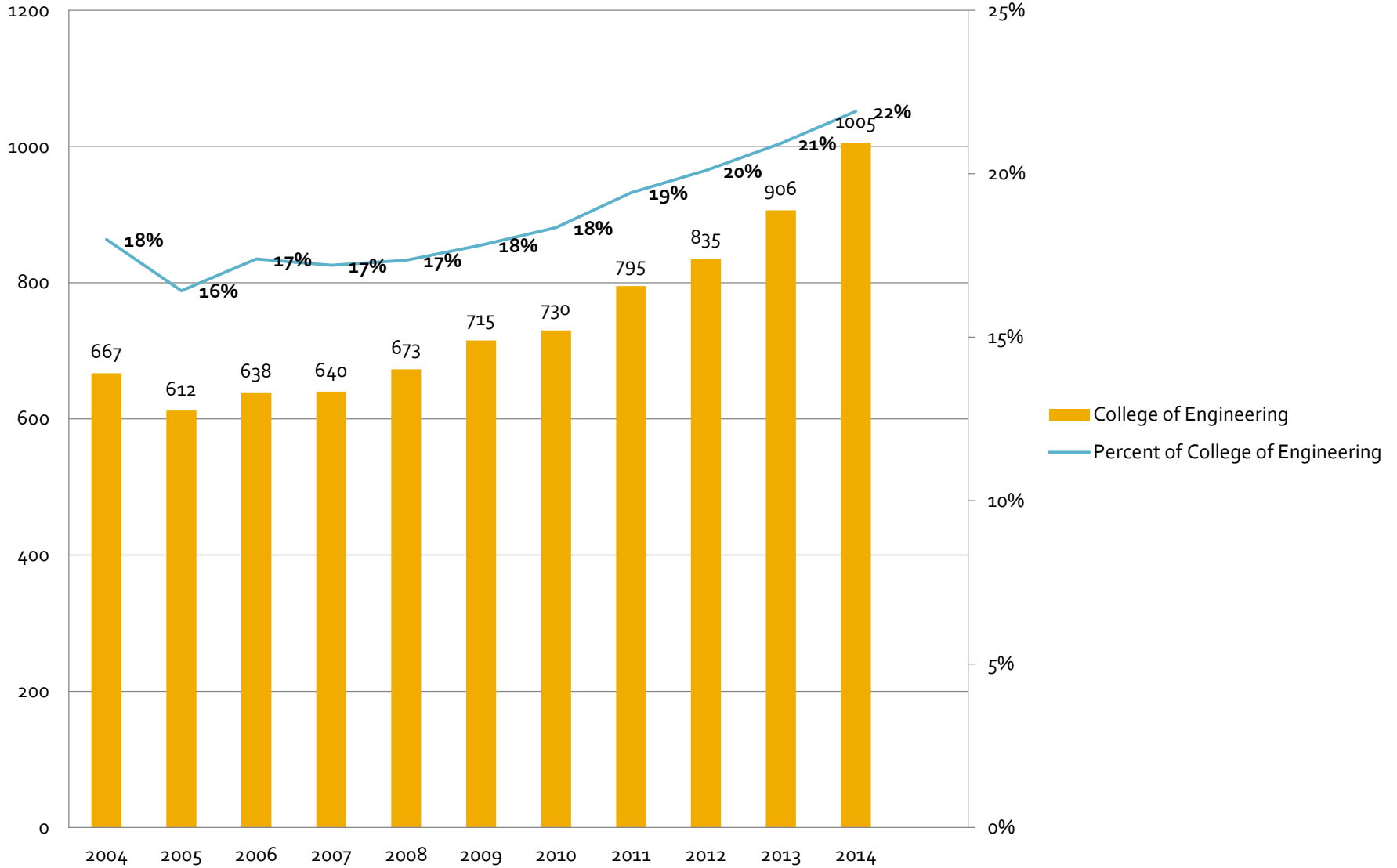
Freshmen class ACT Composite scores 25-75th percentile



# History of female enrollment at Michigan Tech

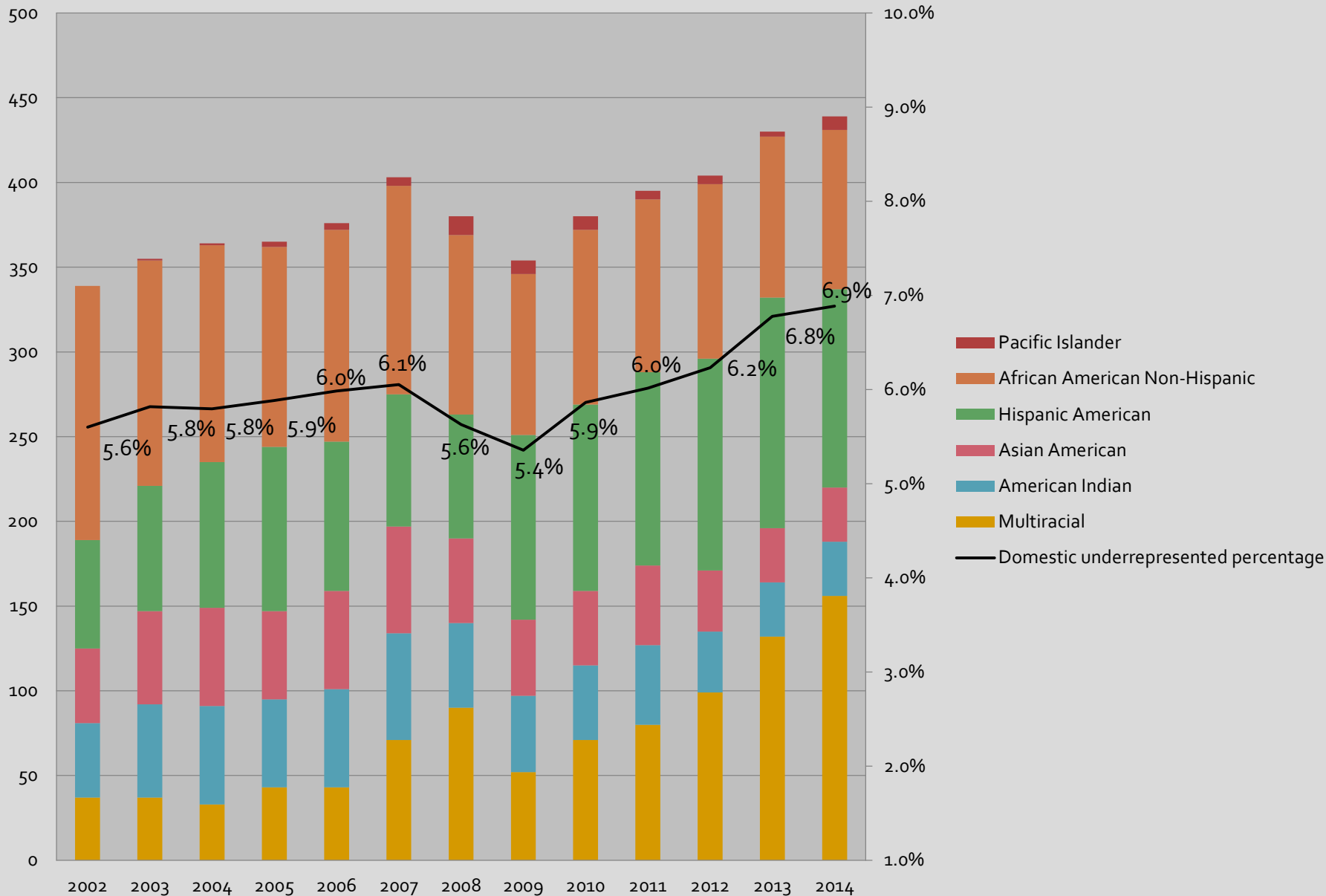


# College of Engineering females

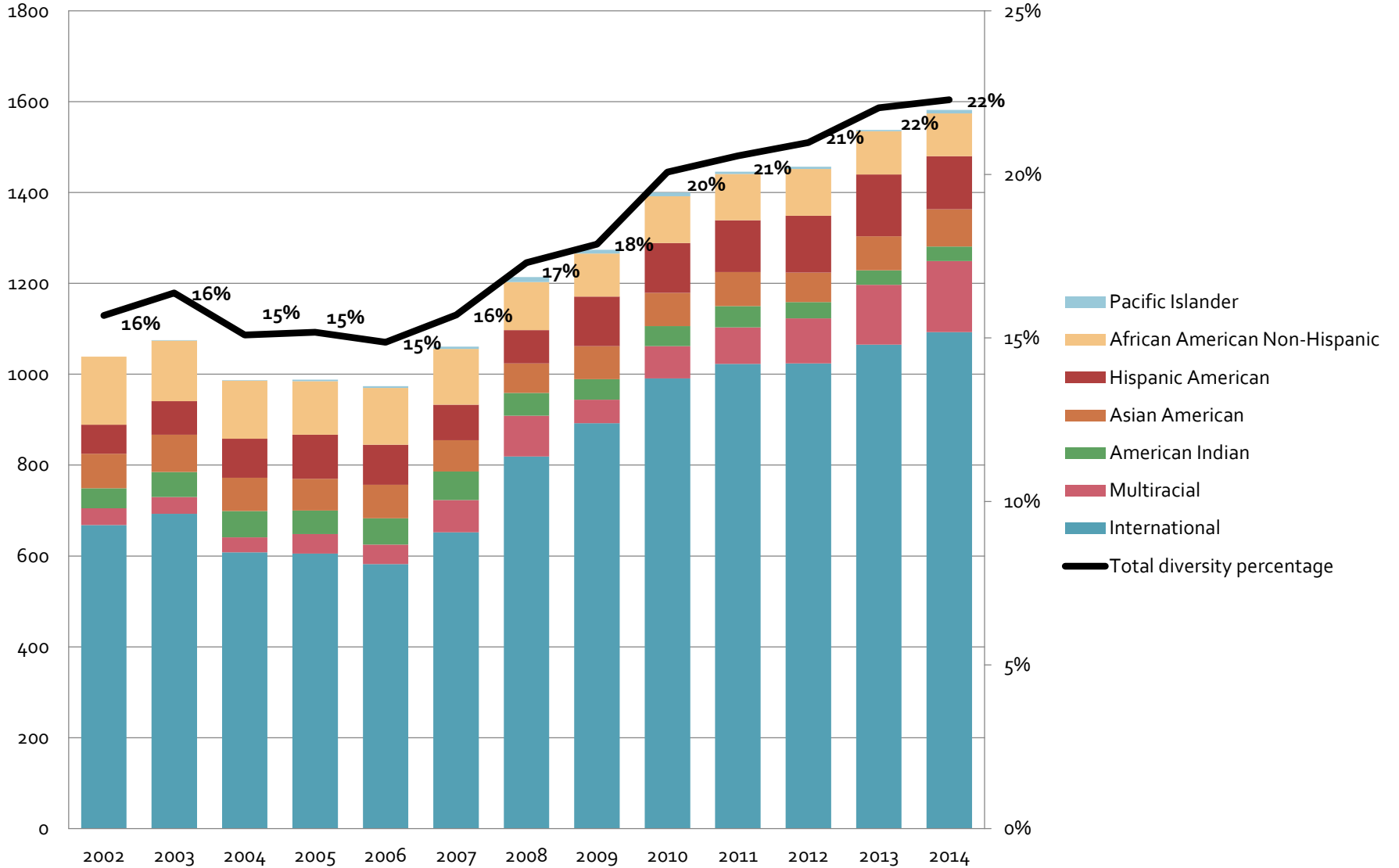




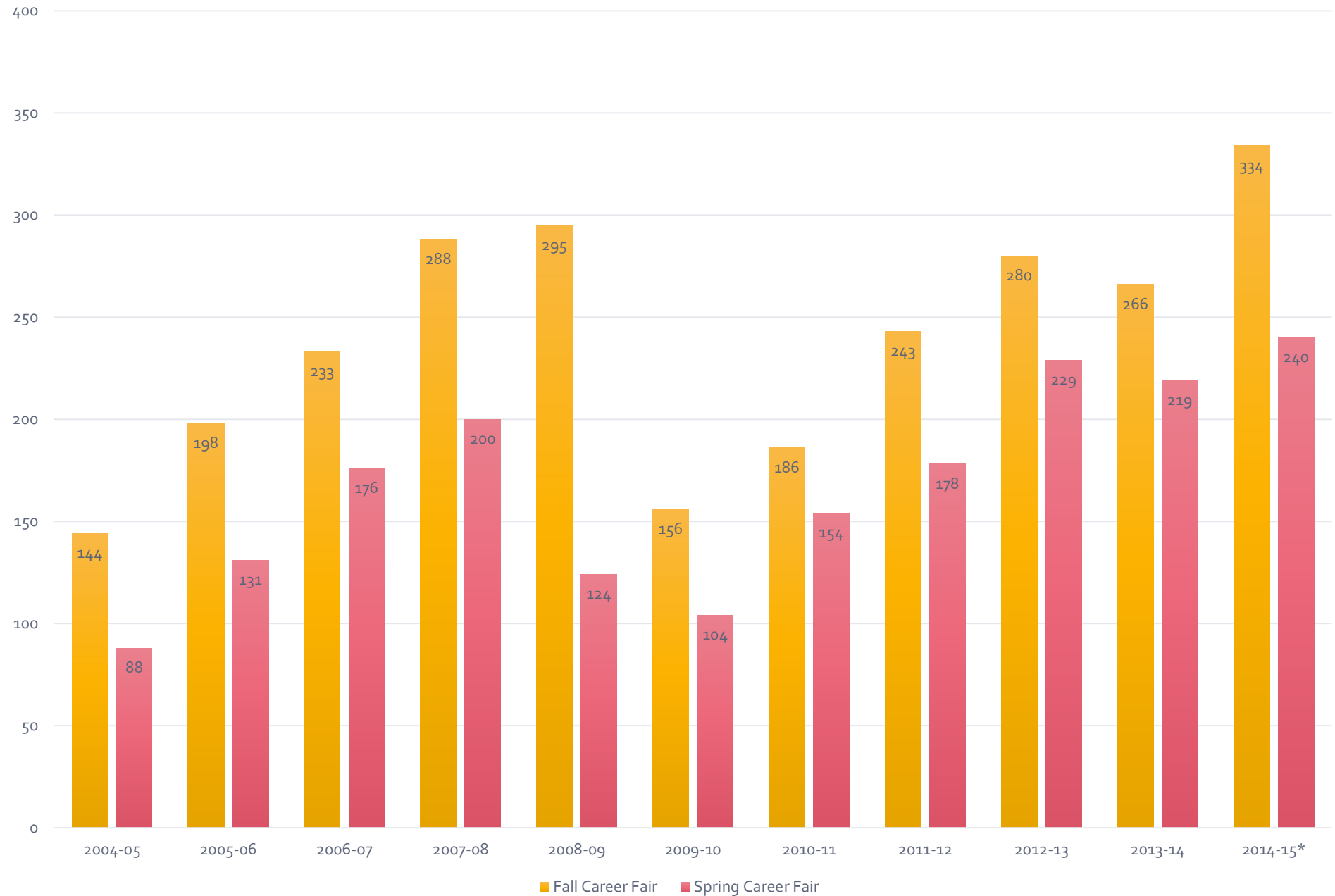
# Domestic Student Diversity



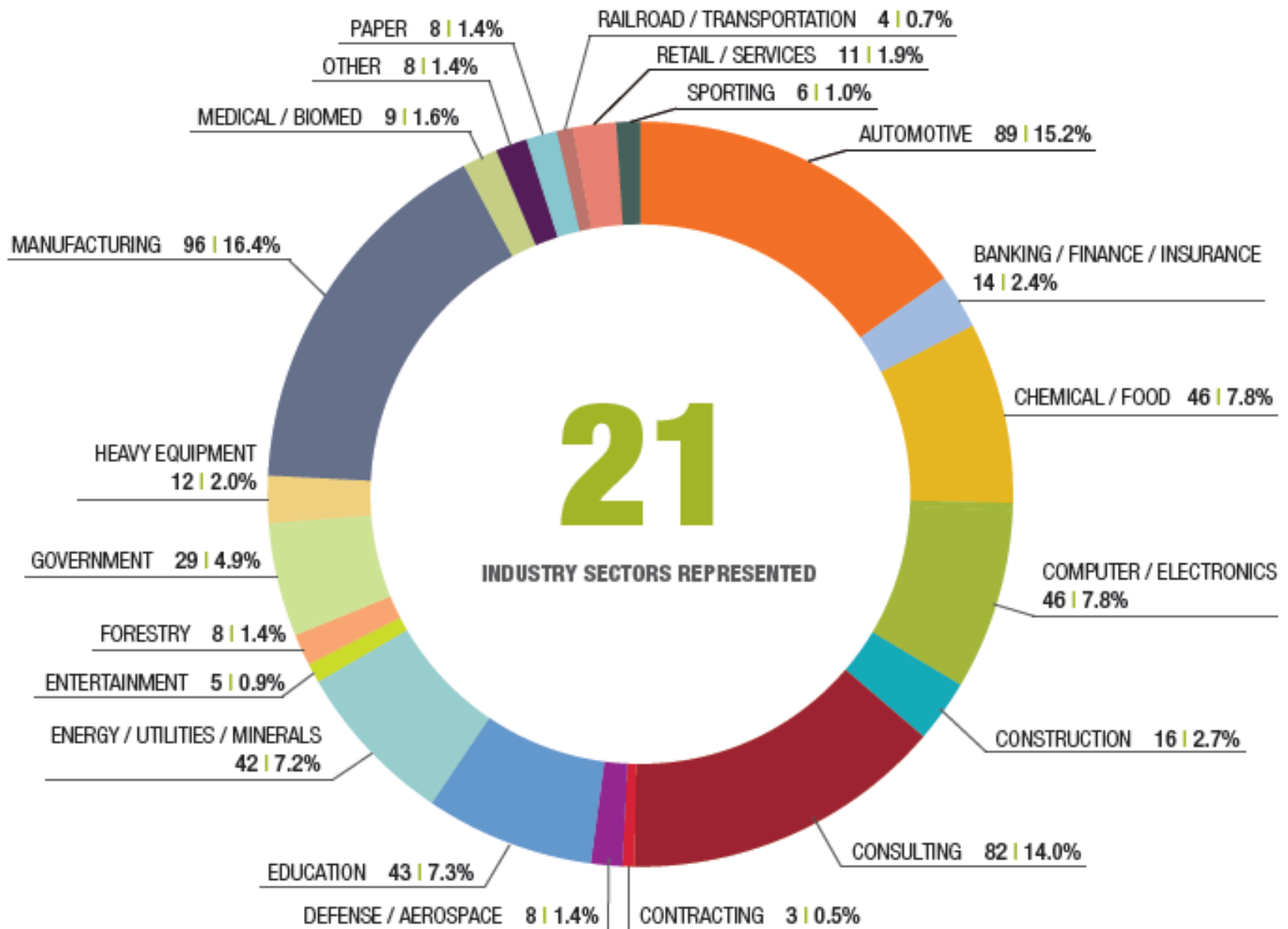
# Total Domestic and International Diversity



# Career Fair Employer Participation Academic Years 2004-05 - 2014-15



## Employment by Industry



# Salary Information

## Permanent Job Salary Survey

Major	Offers	Low Salary	Average Salary	High Salary
Accounting	3	\$38,000	\$46,250	\$52,000
Anthropology	4	\$13,000	\$27,630	\$58,000
Applied Ecology	1	\$14,400	\$14,400	\$14,400
Applied Ecology and Environmental Sciences	8	\$16,000	\$33,730	\$50,000
Applied Geophysics	1	\$108,000	\$108,000	\$108,000
Applied Science Education	2	\$45,000	\$45,000	\$45,000
Atmospheric Sciences	1	\$109,000	\$109,000	\$109,000
Audio Production and Technology	3	\$20,800	\$29,933	\$35,000
Biochemistry and Molecular Biology	1	\$63,000	\$63,000	\$63,000
Biological Sciences	4	\$20,800	\$25,820	\$34,598
Biomedical Engineering	19	\$20,800	\$55,876	\$70,000
Business Administration	5	\$18,720	\$56,724	\$105,000
Chemical Engineering	41	\$52,000	\$68,409	\$96,000
Chemistry	2	\$41,600	\$52,300	\$63,000
Civil Engineering	66	\$31,200	\$50,388	\$71,000
Communication, Culture, and Media	1	\$93,600	\$93,600	\$93,600
Computer Engineering	19	\$45,000	\$64,763	\$108,000
Computer Network and System Administration	16	\$38,970	\$61,729	\$160,000
Computer Science	24	\$32,000	\$64,553	\$115,000
Computer Systems Science	3	\$27,040	\$43,160	\$65,000
Construction Management	4	\$40,000	\$48,750	\$55,000
Economics	1	\$62,400	\$62,400	\$62,400
Electrical Engineering	52	\$13,000	\$64,697	\$200,000
Electrical Engineering Technology	8	\$42,000	\$56,500	\$66,000
Environmental Engineering	11	\$25,000	\$49,222	\$70,000
Forest Science	1	\$35,000	\$35,000	\$35,000

Major	Offers	Low Salary	Average Salary	High Salary
Forestry	6	\$32,000	\$38,703	\$52,000
Geological Engineering	5	\$64,000	\$76,200	\$90,000
Geology	2	\$72,000	\$88,000	\$104,000
Geophysics	1	\$125,000	\$125,000	\$125,000
History	1	\$29,120	\$29,120	\$29,120
Management	4	\$29,120	\$36,280	\$40,000
Management Information Systems	1	\$45,000	\$45,000	\$45,000
Marketing	3	\$31,200	\$39,400	\$52,000
Materials Science and Engineering	13	\$44,013	\$64,003	\$78,000
Mathematical Sciences	3	\$19,000	\$47,333	\$84,000
Mathematics	9	\$30,000	\$54,071	\$100,000
Mechanical Engineering	117	\$20,800	\$60,821	\$100,000
Mechanical Engineering–Engineering Mechanics	2	\$70,000	\$82,250	\$94,500
Mechanical Engineering Technology	17	\$33,280	\$57,278	\$78,000
Medical Informatics	2	\$74,000	\$74,000	\$74,000
Operations and Systems Management	3	\$35,000	\$49,667	\$70,000
Pharmaceutical Chemistry	2	\$41,600	\$56,800	\$72,000
Physics	2	\$45,000	\$52,500	\$60,000
Psychology	1	\$35,360	\$35,360	\$35,360
Scientific and Technical Communication	10	\$22,880	\$45,468	\$66,000
Software Engineering	4	\$55,000	\$81,750	\$110,000
Sound Design	1	\$29,120	\$29,120	\$29,120
Sports and Fitness Management	1	\$30,000	\$30,000	\$30,000
Surveying Engineering	3	\$39,520	\$44,093	\$47,000
Theatre and Entertainment Technology	2	\$22,880	\$31,440	\$40,000

School	<u>Payscale - Median starting pay</u>	<u>Payscale - Return on Investment (20 year net - in state)</u>
MTU	60,000	661,700
UM-AA	51,300	541,300
MSU	44,300	409,400
OU	42,900	367,500
FSU	41,300	295,800
WMU	42,400	294,600
WSU	42,500	275,500
SVSU	38,200	270,000
EMU	38,600	213,400
CMU	39,200	208,800
GVSU	36,400	157,700
UM-F	36,000	156,100
LSSU	40,400	131,600
NMU	37,400	119,700

# Michigan Tech class of 2014

775 graduates employed in Michigan

- \*\$60,000 a year = \$46,500,000 in earnings
- \*4.5% income tax rate = \$2,092,500 to state
- Or \$2,700 per graduate