

F COURSE TYPICALLY FALL SEMESTER
 S COURSE TYPICALLY SPRING SEMESTER
 Su COURSES OFFERED IN SUMMER/VARIES/BUSINESS CORE AND GEN ED
 (L) INDICATES A COURSE WHICH INCLUDES A LAB
 MUST BE SCHEDULED IN ADDITION TO THE LECTURE



Michigan Tech
 School of Business
 and Economics

General Business FLOWCHART Academic Year 2017-18

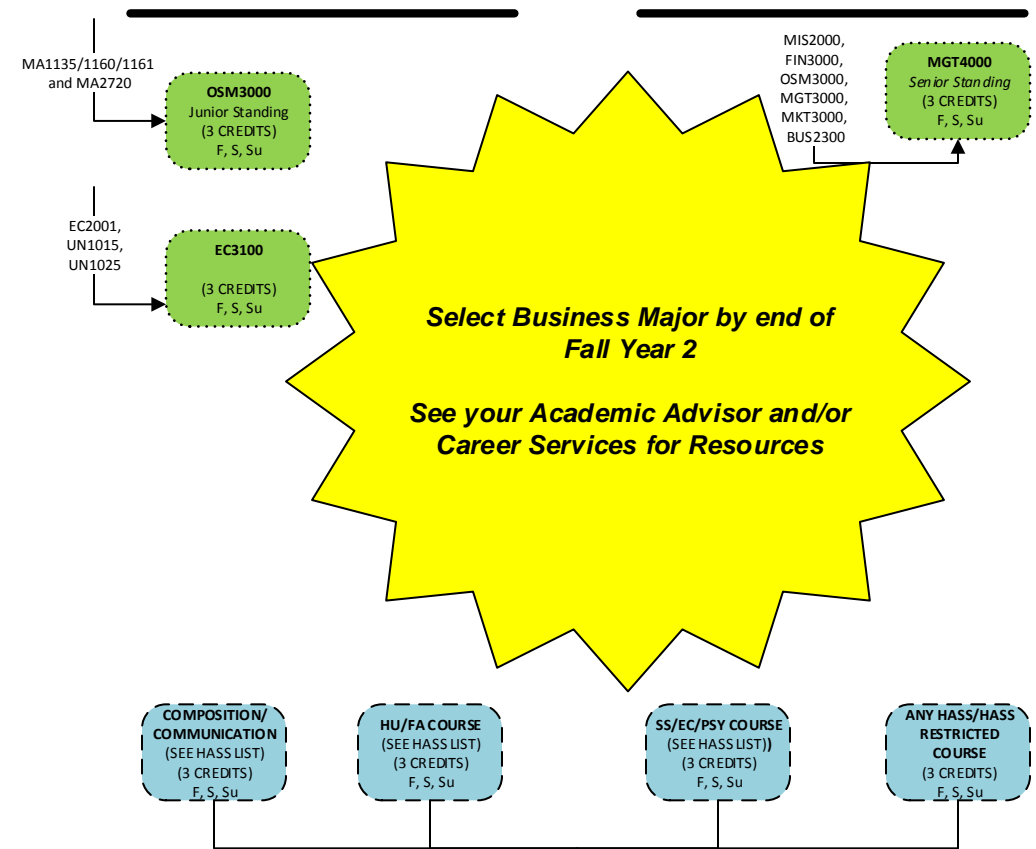
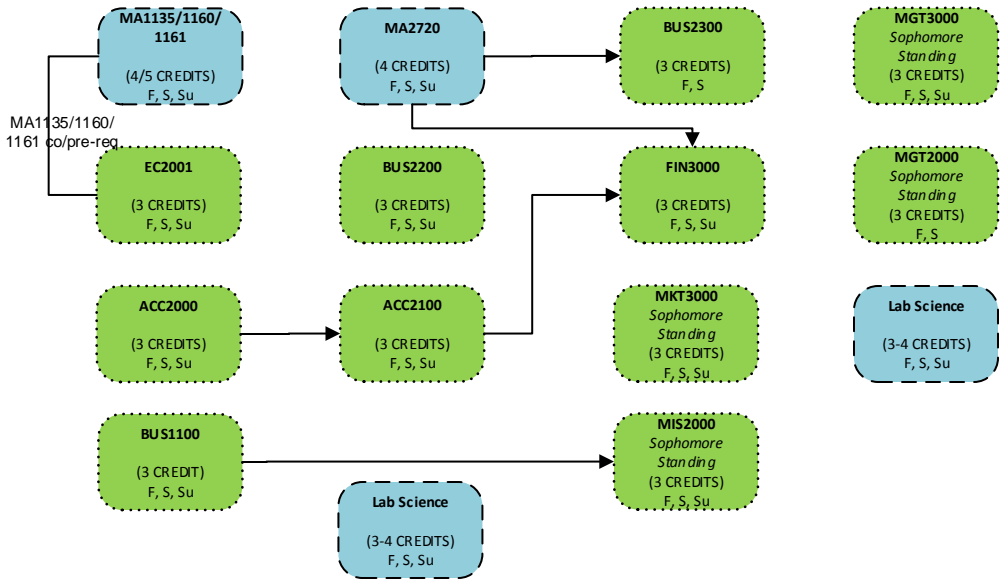
This is to be used for course recommendations.
 Your Official Audit can be found in MyMichiganTech with
 u.achieve Interactive Degree Audit.

Fall Year 1 Spring

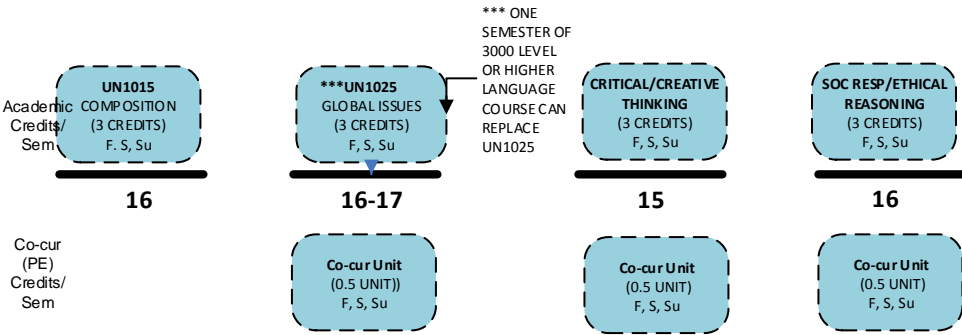
Fall Year 2 Spring

Fall Year 3 Spring

Fall Year 4 Spring



SAMPLE = Business Requirements
SAMPLE = General Education Requirements (Math, Lab Science, CORE, HASS and Co-Curricular)



- 6 credits must be upper division 3000-4000 level courses
- UN1015 and UN1025 are prerequisites for all upper division HASS courses

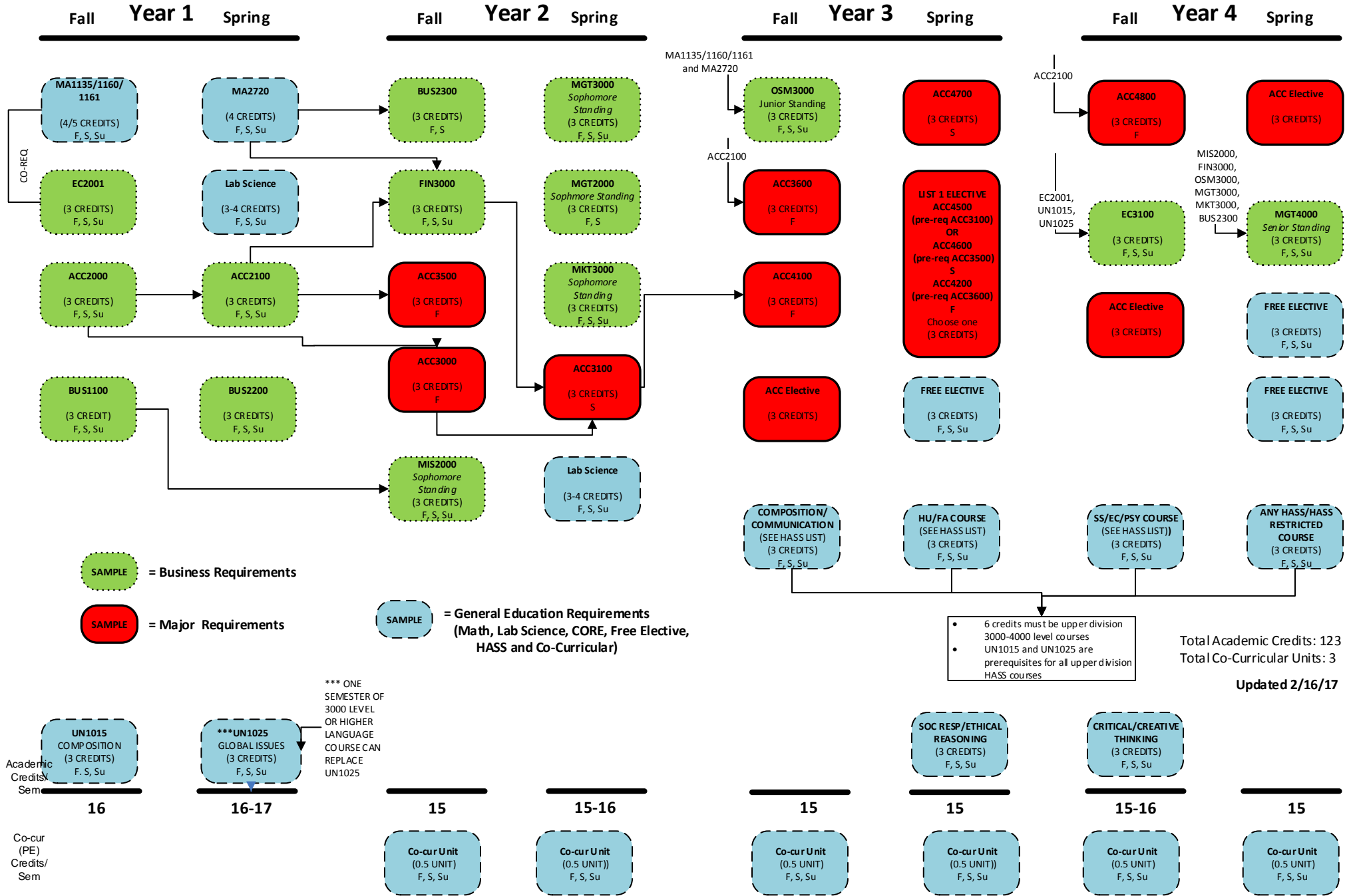
F COURSE TYPICALLY FALL SEMESTER
 S COURSE TYPICALLY SPRING SEMESTER
 SU COURSES OFFERED IN SUMMER/VARIABLES/BUSINESS CORE AND GEN ED
 (L) INDICATES A COURSE WHICH INCLUDES A LAB
 MUST BE SCHEDULED IN ADDITION TO THE LECTURE



Michigan Tech
 School of Business
 and Economics

ACCOUNTING FLOWCHART Academic Year 2016-17

This is to be used for course recommendations.
 Your Official Audit can be found in MyMichiganTech with
 u.achieve Interactive Degree Audit.



F COURSE TYPICALLY FALL SEMESTER

S COURSE TYPICALLY SPRING SEMESTER

Su COURSES OFFERED IN SUMMER/VARIABLES/BUSINESS CORE AND GEN ED

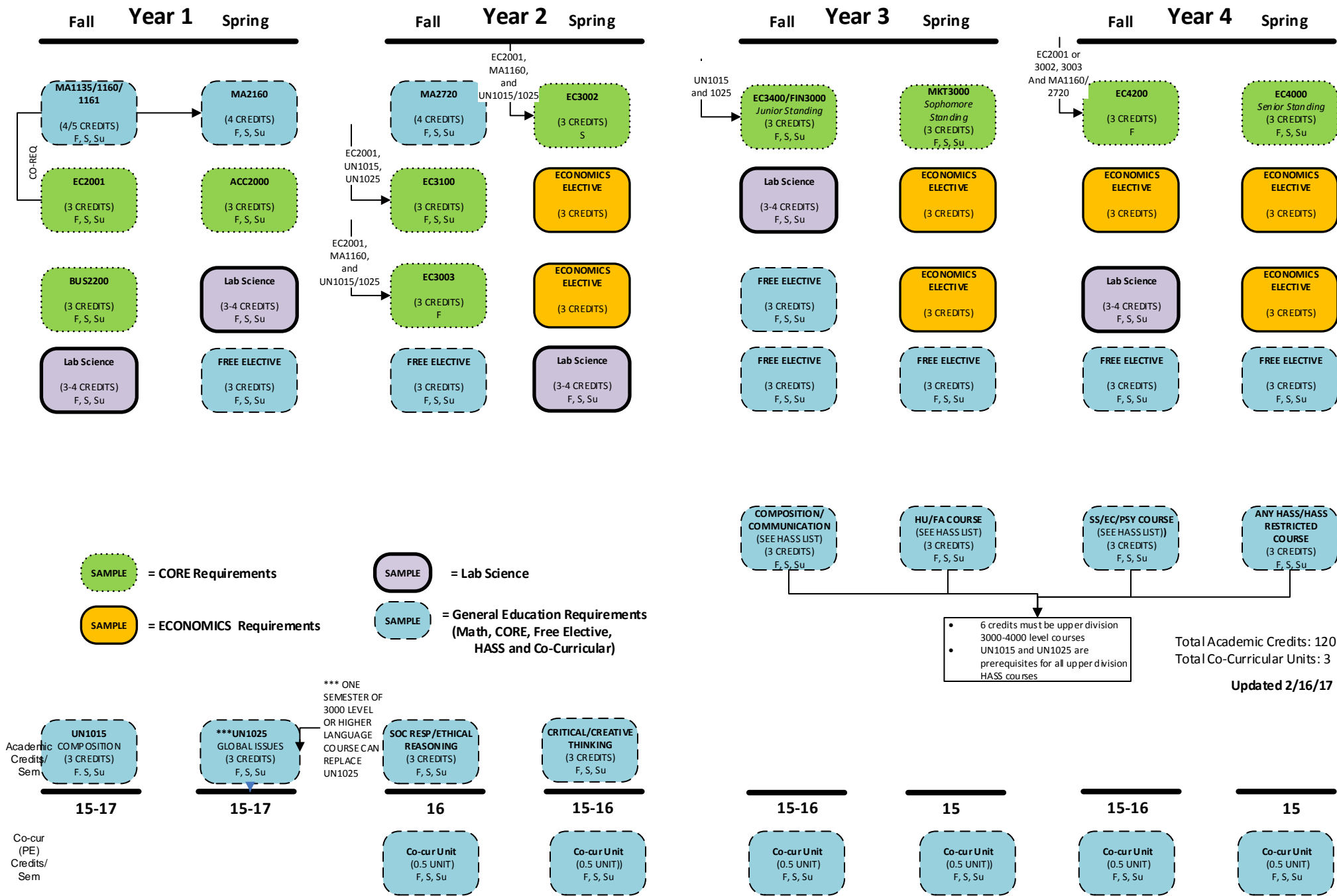
(L) INDICATES A COURSE WHICH INCLUDES A LAB
MUST BE SCHEDULED IN ADDITION TO THE LECTURE



Michigan Tech
School of Business
and Economics

ECONOMICS FLOWCHART Academic Year 2016-17

This is to be used for course recommendations.
Your Official Audit can be found in MyMichiganTech with
u.achieve Interactive Degree Audit.



*** ONE SEMESTER OF 3000 LEVEL OR HIGHER LANGUAGE COURSE CAN REPLACE UN1025

Academic Credits/Sem

Co-cur (PE) Credits/Sem

F COURSE TYPICALLY FALL SEMESTER

S COURSE TYPICALLY SPRING SEMESTER

Su COURSES OFFERED IN SUMMER/VARIES/BUSINESS CORE AND GEN ED

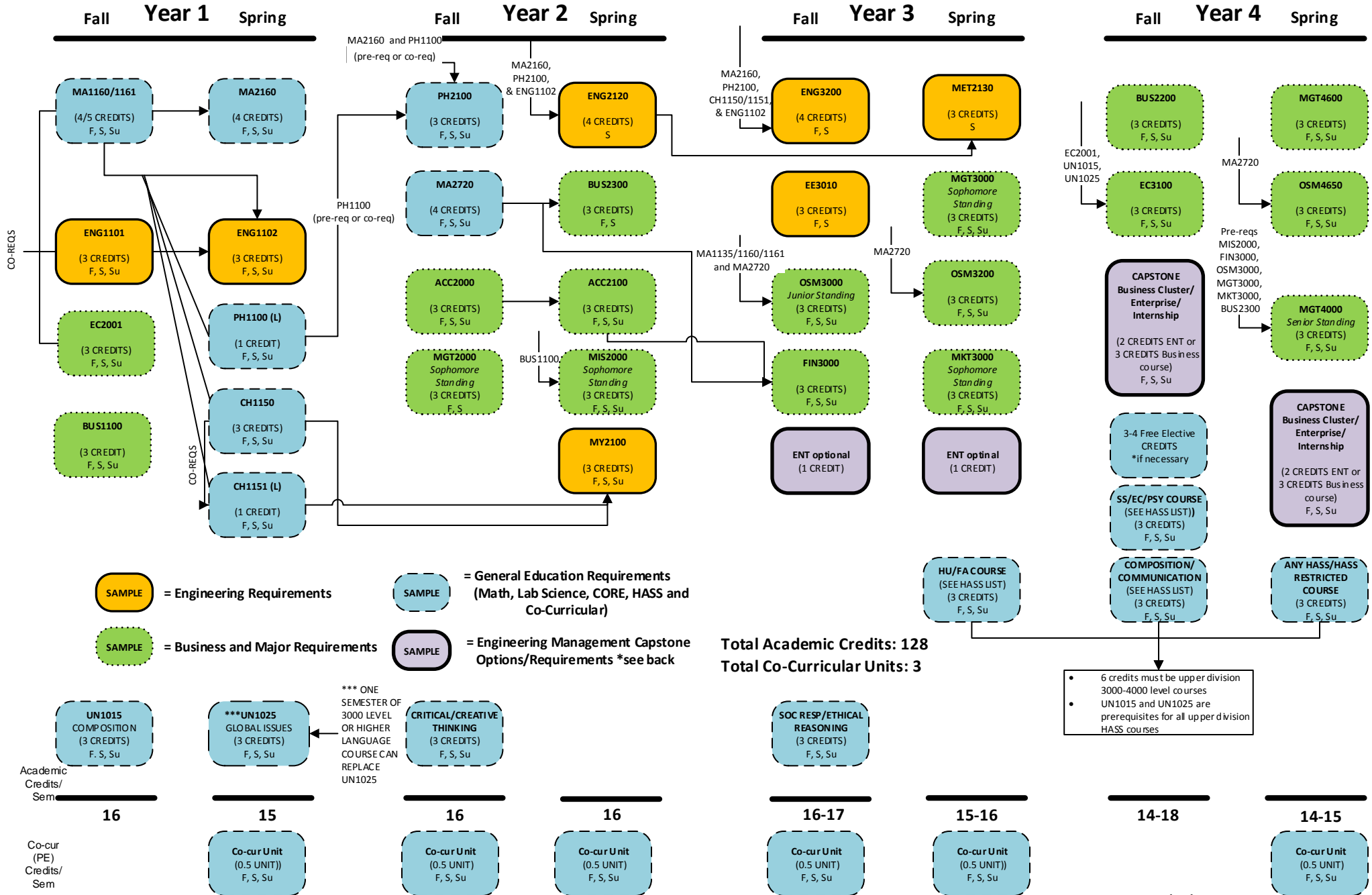
(L) INDICATES A COURSE WHICH INCLUDES A LAB
MUST BE SCHEDULED IN ADDITION TO THE LECTURE



Michigan Tech
School of Business
and Economics

ENGINEERING MANAGEMENT FLOWCHART Academic Year 2016-17

This is to be used for course recommendations.
Your Official Audit can be found in MyMichiganTech with
u.achieve Interactive Degree Audit.



Engineering Management Capstone: 6 Credits Total

Option 1: Enterprise

ENT4900 (2 cr.) and ENT4910 (2 cr.) plus 2 credits below (1 cr. Each)
ENT1960, ENT2950, ENT2960, ENT3950, ENT3960 or ENT4961

Option 2: Business Cluster (select a business discipline for 2 courses)

ACC3500 and ACC4500
BUS4991 and BUS4992
EC3300 and EC4200
FIN4100 and FIN4500
MGT3800 and MGT4200
MIS3000 and MIS3200
MKT4100 and MKT4200
OSM3600 and OSM4700

Option 3: Internship and Advance Project Management

*BUS3900 and OSM4200

*Internship (BUS3900) can be done during any semester and often are in the Summer

UNDERGRADUATE CATALOG: <http://www.mtu.edu/catalog/undergraduate/course-descriptions/>

GENERAL EDUCATION: <http://www.mtu.edu/provost/academic-policies/general-education/programs/>

CO-CURRICULAR LIST: <http://www.mtu.edu/registrar/faculty-staff/advisors/gen-ed/>

GENERAL EDUCATION REQUIREMENTS

A. CORE COURSES (12 CREDITS)

1. **UN1015** (COMPOSITION)
2. **UN1025** (GLOBAL ISSUES)
3. CRITICAL AND CREATIVE THINKING*
4. SOCIAL RESPONSIBILITY AND ETHICAL REASONING**

*** LIST**

FA2330
FA2520
FA2720
FA2820
HU2130
HU2503
HU2538
HU2700
HU2820
HU2910
SS2300

**** LIST**

EC2001
PSY2000
SS2100
SS2200
SS2400
SS2500
SS2501
SS2502
SS2503
SS2504
SS2505
SS2600
SS2610
SS2700

B. HASS COURSES (12 CREDITS) (General Ed Website, left)

1. COMMUNICATION/COMPOSITION

2. HUMANITIES and FINE ARTS

3. SOCIAL and BEHAVIORAL SCIENCES

4. ANY from lists above OR HASS RESTRICTED COURSE

- 6 credits must be upper division 3000-4000 level courses
- No more than 3 credits from the HASS Restricted list can be used to satisfy HASS requirements.
- Each course can satisfy only one requirement.

C. CO-CURRICULAR ACTIVITIES (3 UNITS)

PE/FA/AR/AF _____
PE/FA/AR/AF _____
PE/FA/AR/AF _____

PE/FA/AR/AF _____
PE/FA/AR/AF _____
PE/FA/AR/AF _____

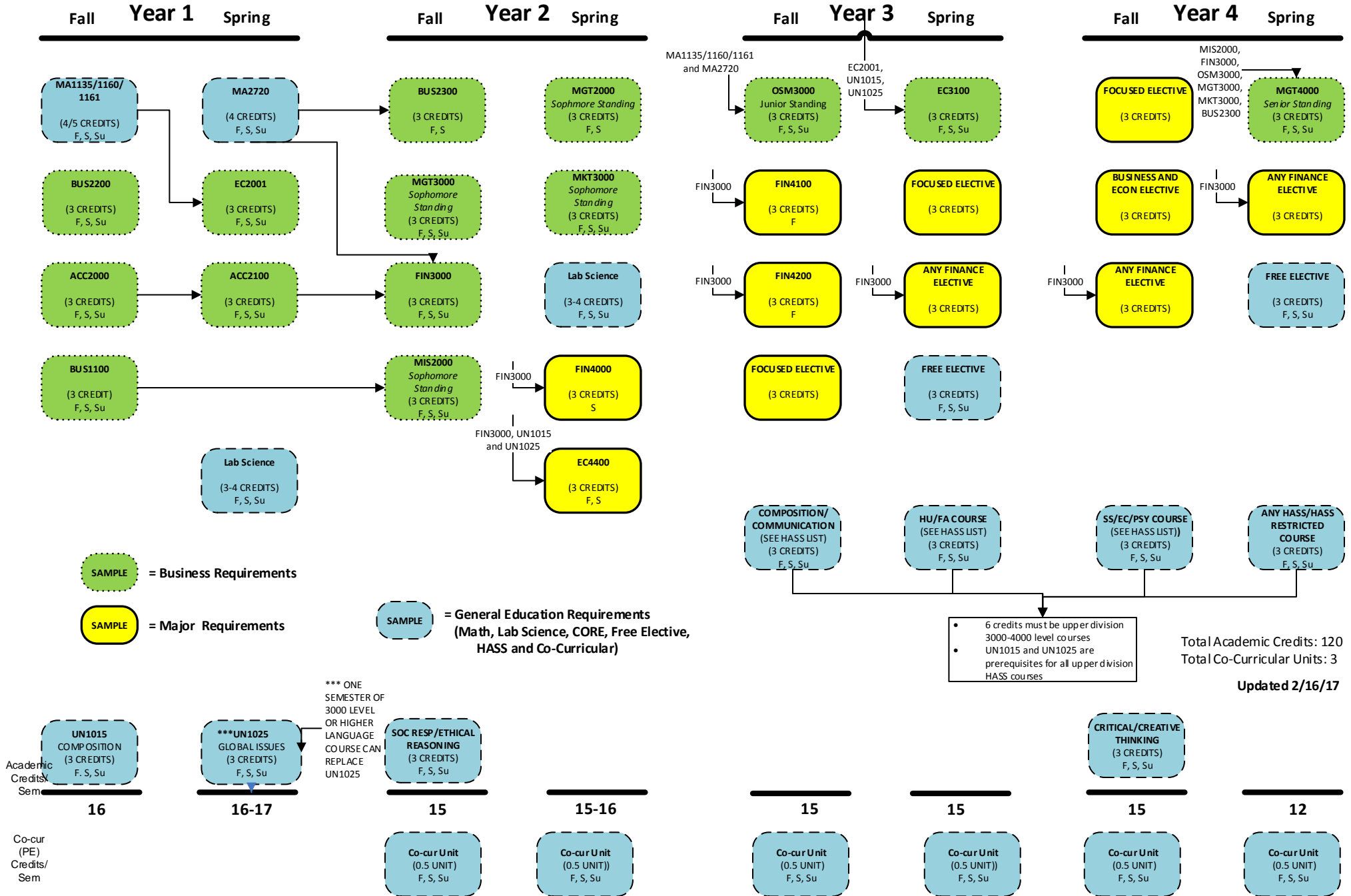
F COURSE TYPICALLY FALL SEMESTER
 S COURSE TYPICALLY SPRING SEMESTER
 Su COURSES OFFERED IN SUMMER/VARIES/BUSINESS CORE AND GEN ED
 (L) INDICATES A COURSE WHICH INCLUDES A LAB
 MUST BE SCHEDULED IN ADDITION TO THE LECTURE



Michigan Tech
 School of Business
 and Economics

FINANCE FLOWCHART Academic Year 2016-17

This is to be used for course recommendations.
 Your Official Audit can be found in MyMichiganTech with
 u.achieve Interactive Degree Audit.



F COURSE TYPICALLY FALL SEMESTER

S COURSE TYPICALLY SPRING SEMESTER

SU COURSES OFFERED IN SUMMER/VARIES/BUSINESS CORE AND GEN ED

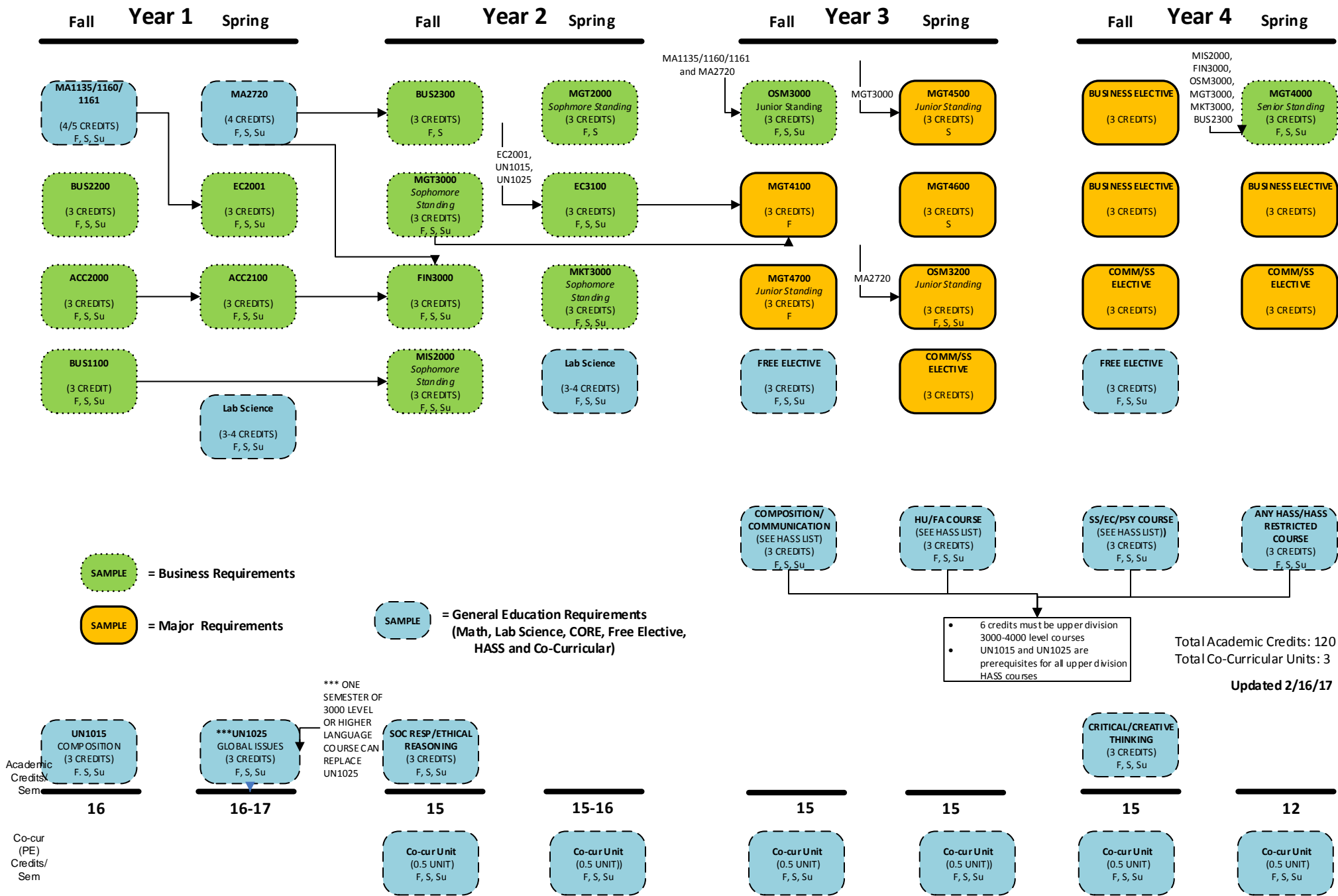
(L) INDICATES A COURSE WHICH INCLUDES A LAB
MUST BE SCHEDULED IN ADDITION TO THE LECTURE



Michigan Tech
School of Business
and Economics

MANAGEMENT FLOWCHART Academic Year 2016-17

This is to be used for course recommendations.
Your Official Audit can be found in MyMichiganTech with
u.achieve Interactive Degree Audit.



F COURSE TYPICALLY FALL SEMESTER

S COURSE TYPICALLY SPRING SEMESTER

SU COURSES OFFERED IN SUMMER/VARIES/BUSINESS CORE AND GEN ED

(L) INDICATES A COURSE WHICH INCLUDES A LAB
MUST BE SCHEDULED IN ADDITION TO THE LECTURE

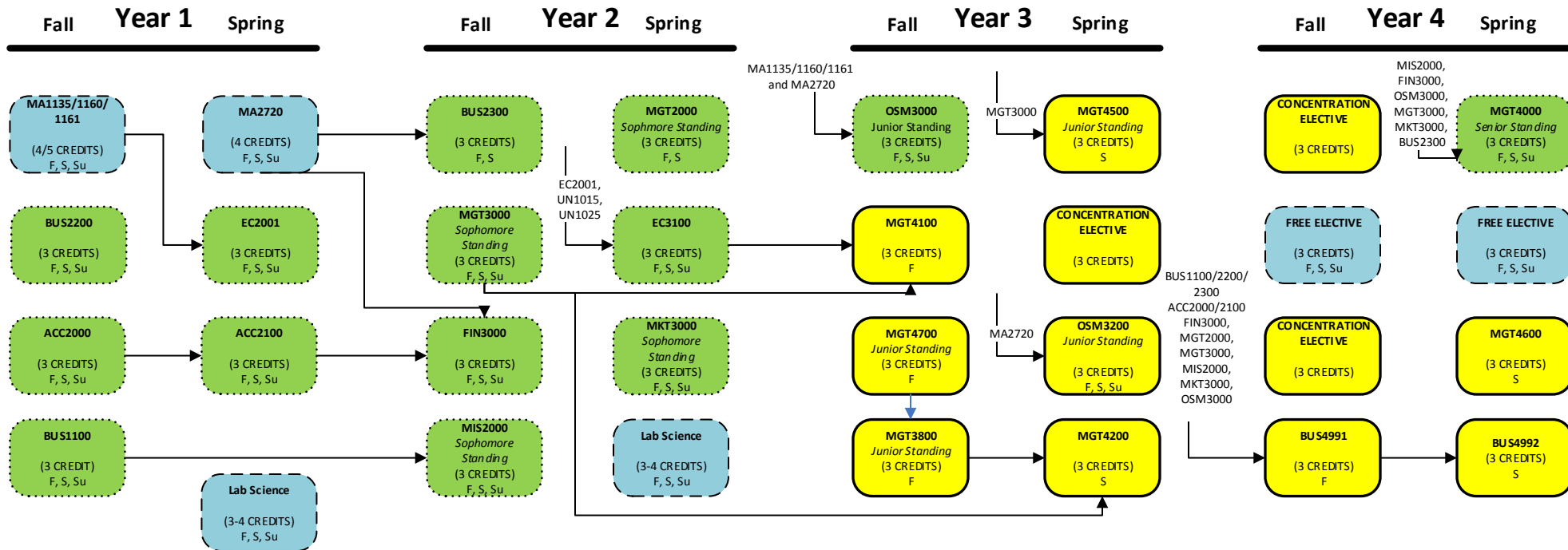


Michigan Tech
School of Business
and Economics

MANAGEMENT w/concentration in Entrepreneurship FLOWCHART

Academic Year 2016-17

This is to be used for course recommendations.
Your Official Audit can be found in MyMichiganTech with
u.achieve Interactive Degree Audit.



SAMPLE = Business Requirements

SAMPLE = Major Requirements

SAMPLE = General Education Requirements
(Math, Lab Science, CORE, Free Elective,
HASS and Co-Curricular)

COMPOSITION/
COMMUNICATION
(SEE HASS LIST)
(3 CREDITS)
F, S, Su

HU/FA COURSE
(SEE HASS LIST)
(3 CREDITS)
F, S, Su

SS/EC/PSY COURSE
(SEE HASS LIST)
(3 CREDITS)
F, S, Su

ANY HASS/HASS
RESTRICTED
COURSE
(3 CREDITS)
F, S, Su

- 6 credits must be upper division 3000-4000 level courses
- UN1015 and UN1025 are prerequisites for all upper division HASS courses

Total Academic Credits: 123
Total Co-Curricular Units: 3

Updated 2/16/17

Academic
Credits/
Sem

*** ONE
SEMESTER OF
3000 LEVEL
OR HIGHER
LANGUAGE
COURSE CAN
REPLACE
UN1025

16

16-17

15

15-16

15

15

15

15

Co-cur
(PE)
Credits/
Sem

Co-cur Unit
(0.5 UNIT)
F, S, Su

Co-cur Unit
(0.5 UNIT)
F, S, Su

Co-cur Unit
(0.5 UNIT)
F, S, Su

Co-cur Unit
(0.5 UNIT)
F, S, Su

Co-cur Unit
(0.5 UNIT)
F, S, Su

Co-cur Unit
(0.5 UNIT)
F, S, Su

F COURSE TYPICALLY FALL SEMESTER

S COURSE TYPICALLY SPRING SEMESTER

Su COURSES OFFERED IN SUMMER/VARIES/BUSINESS CORE AND GEN ED

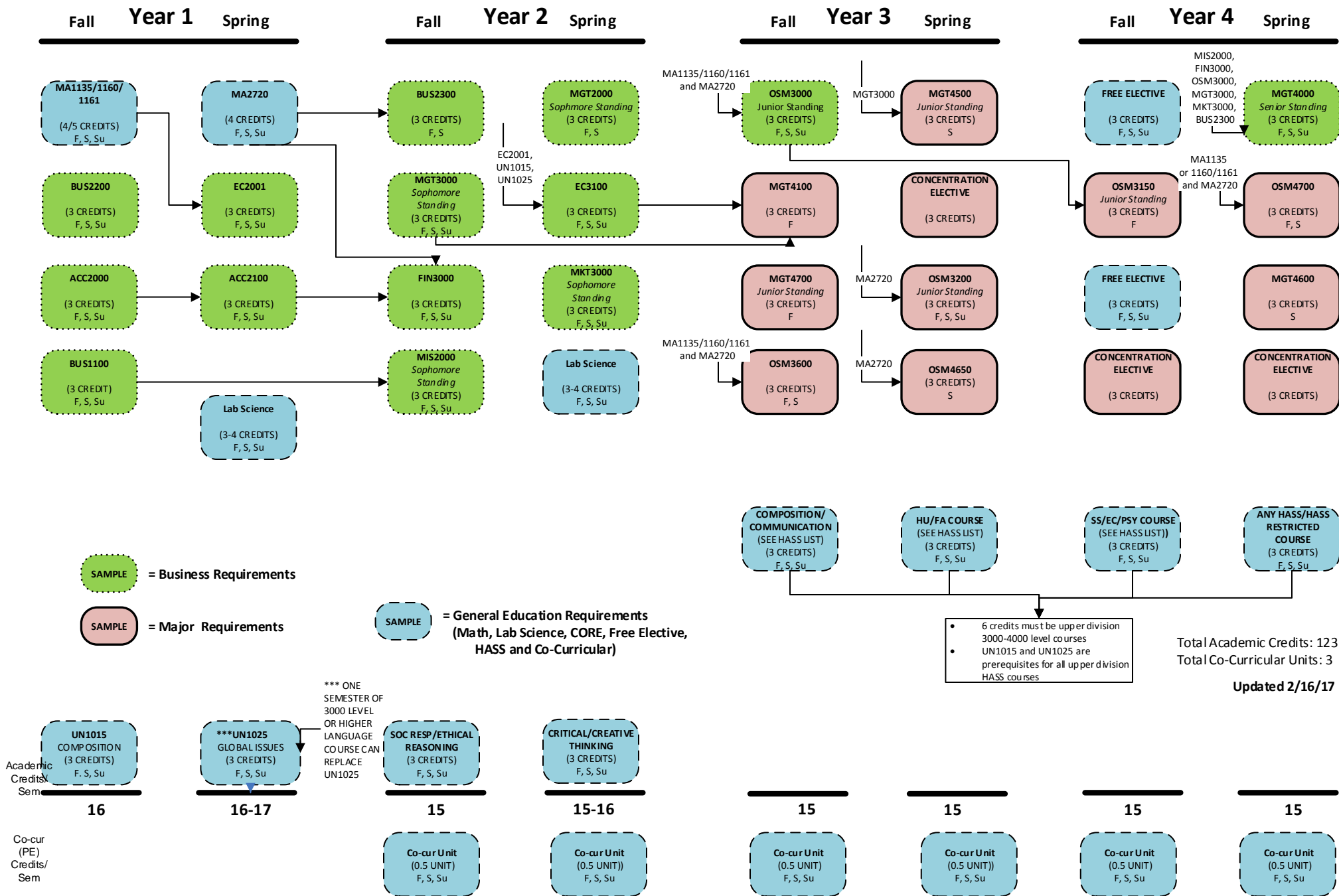
(L) INDICATES A COURSE WHICH INCLUDES A LAB
MUST BE SCHEDULED IN ADDITION TO THE LECTURE



Michigan Tech
School of Business
and Economics

MANAGEMENT w/concentration in Supply Chain and Operations Management FLOWCHART Academic Year 2016-17

This is to be used for course recommendations.
Your Official Audit can be found in MyMichiganTech with
u.achieve Interactive Degree Audit.



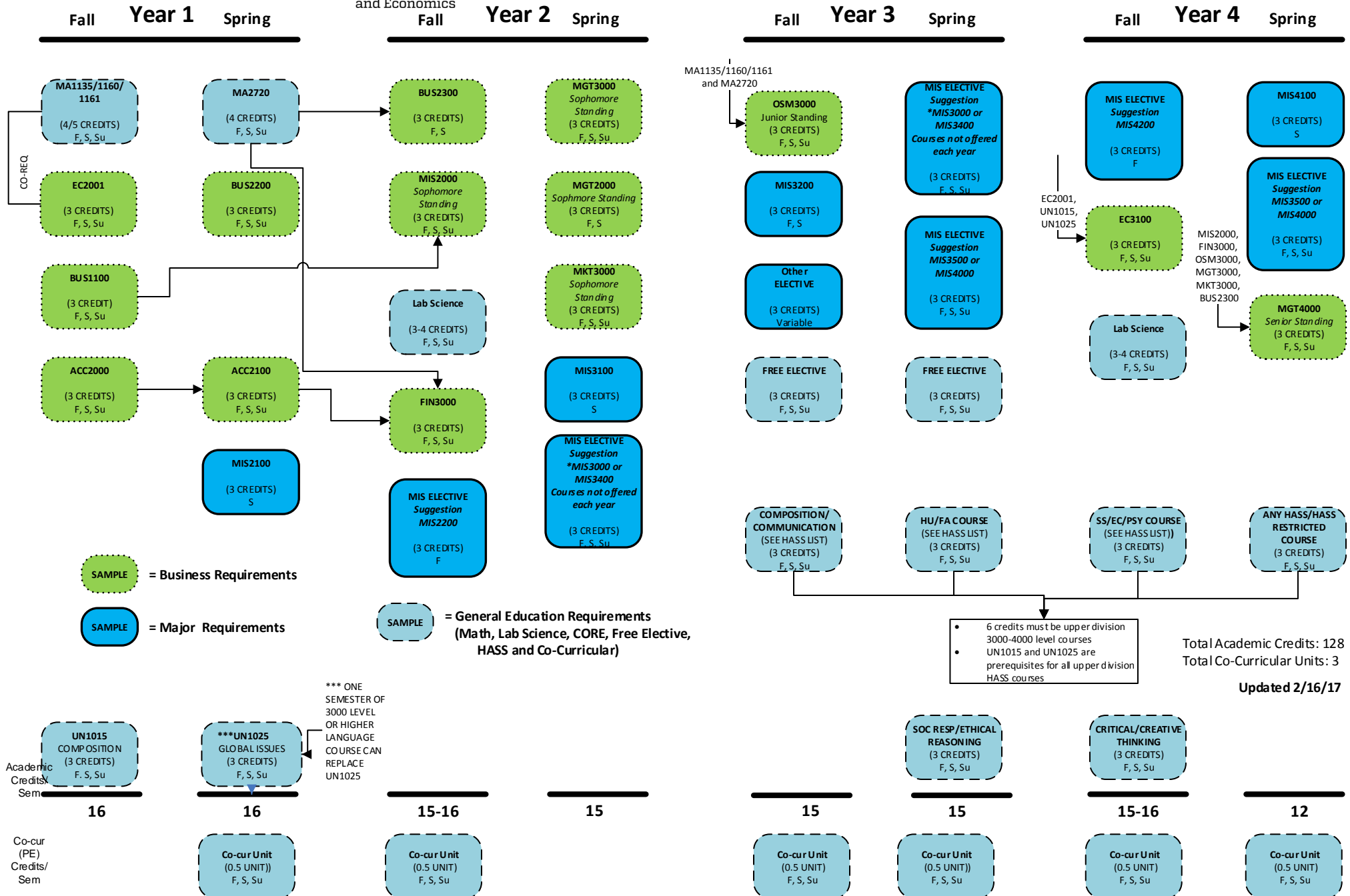
F COURSE TYPICALLY FALL SEMESTER
 S COURSE TYPICALLY SPRING SEMESTER
 Su COURSES OFFERED IN SUMMER/VARIABLES/BUSINESS CORE AND GEN ED
 (L) INDICATES A COURSE WHICH INCLUDES A LAB
 MUST BE SCHEDULED IN ADDITION TO THE LECTURE



Michigan Tech
 School of Business
 and Economics

MANAGEMENT INFORMATION SYSTEMS FLOWCHART Academic Year 2016-17

This is to be used for course recommendations.
 Your Official Audit can be found in MyMichiganTech with
 u.achieve Interactive Degree Audit.



F COURSE TYPICALLY FALL SEMESTER

S COURSE TYPICALLY SPRING SEMESTER

Su COURSES OFFERED IN SUMMER/VARIES/BUSINESS CORE AND GEN ED

(L) INDICATES A COURSE WHICH INCLUDES A LAB
MUST BE SCHEDULED IN ADDITION TO THE LECTURE



Michigan Tech
School of Business
and Economics

MARKETING FLOWCHART Academic Year 2016-17

This is to be used for course recommendations.
Your Official Audit can be found in MyMichiganTech with
u.achieve Interactive Degree Audit.

