

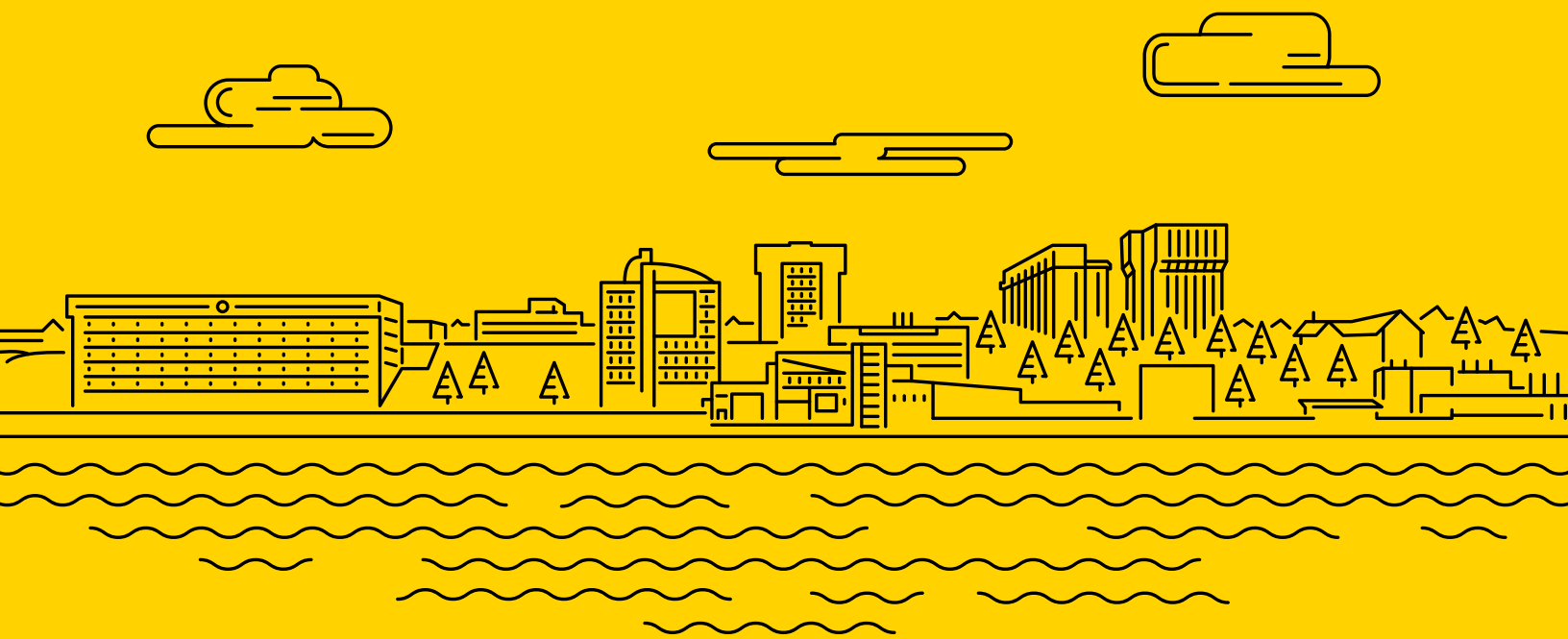


# READ ME!

Submit your enrollment deposit.

Apply for financial aid.

Complete your housing application.



Ready, Huskies? Turn the page and get started!



# Michigan Tech Guide

---

MICHIGAN TECHNOLOGICAL UNIVERSITY

**You're accepted to Michigan Tech! How crazy cool is that? The guide you're holding will help you jump into the Michigan Tech experience (it's like nothing you've ever seen or done before!). Still deciding? Not a problem! There are steps you can take while you make your final decision. Review this guide for what to do next.**

---

We know you'll have questions along the way, so just give the Admissions Office a call at **888-688-1885** or email us at **mtu4u@mtu.edu**.

## MICHIGAN TECH GUIDE KEY



Really important to do—check it off once you complete it.

**FY**

Information especially for first-year students

**T**

Information especially for transfer students



Live webcast session (all times are eastern and subject to change)

## □ Visit Campus

Campus tours are offered every Monday through Friday at 8:30 a.m. and 12:30 p.m. (eastern). While you're here, you can meet with a representative from your intended area of study. On select days during the academic year, you can also stay overnight for free in a residence hall with a student host—a two-week notice is required.

Call us at **888-688-1885** or plan your visit online at [mtu.edu/admissions/visit](http://mtu.edu/admissions/visit).

Save the date for Preview Day—a visit day just for students accepted to Michigan Tech! Preview Day is chock-full of information sessions on housing and residence life, scholarships and financial aid, international opportunities, what to expect in the classroom, and more. Preview Day is Saturday, March 18, 2017. See [mtu.edu/previewday](http://mtu.edu/previewday) for more information.

## □ Log on to MyMichiganTech

As an accepted student, you now have access to **MyMichiganTech**, your personalized Michigan Tech website. Log on to view your enrollment checklist—a list of tasks to complete and information you'll need to know.

- Pay your enrollment deposit.
- Apply for on-campus housing and check the status of your residence hall application.
- Access your Michigan Tech email.
- View and accept scholarships and financial aid you've been awarded.
- Access the ALEKS Math Placement Assessment.
- Get details on course placement and your schedule.
- Upload your HuskyCard photo.
- Grant guest access for up to four people to view your bill, transcript, class schedule, and other important student record information.

Log on at [mymichigantech.mtu.edu](http://mymichigantech.mtu.edu). You'll need the username and password provided on the Account Details sheet included in your acceptance packet. Select the Change Password icon to set your official Michigan Tech password. You'll use this password to access **MyMichiganTech** and other campus computing resources, including your Michigan Tech email account.

For more information, contact the Admissions Office at **888-688-1885** or [mtu4u@mtu.edu](mailto:mtu4u@mtu.edu).

## □ Join the Facebook Group for New Incoming Students

Make new friends, ask questions, and get the latest information—like Michigan Tech Admissions on Facebook at [facebook.com/michigantechadmissions](https://www.facebook.com/michigantechadmissions), and join our group for new incoming students at [facebook.com/groups/MichiganTech2017](https://www.facebook.com/groups/MichiganTech2017). Plus, show the world your Husky pride, connect with Michigan Tech.



## □ Submit Your Enrollment Deposit

To enroll at Michigan Tech you need to submit a \$100 enrollment deposit. Submitting your deposit as soon as possible will allow you to apply for on-campus housing and guarantee your spot in the incoming class.

Enrollment Deposit Due Dates	
Semester	Enrollment deposit due
Spring 2017 (January)	Due 30 days from acceptance
Summer 2017 (May or June)	Due 30 days from acceptance
Fall 2017 (September)	Due May 1*

\*For fall applicants, your deposit is fully refundable if you notify the Admissions Office by May 1 that you do not plan to enroll.

You can pay your deposit online through **MyMichiganTech**. Or, send a check or money order payable to Michigan Technological University—be sure to include your Student ID number (M number) from your Account Details sheet.

**Admissions Office**  
**Michigan Technological University**  
**1400 Townsend Drive**  
**Houghton, MI 49931-1295**

## □ Connect with Michigan Tech

There are plenty of opportunities to connect with Michigan Tech for more information or to get answers to your questions.

- **Regional events**—Held in locations throughout the Midwest, these are opportunities to connect with staff from campus and meet other students who are considering Michigan Tech.
- **Live webcasts**—Join us for live online presentations from Michigan Tech staff and current students about important topics in the college decision process. Look for the webcast icon throughout this book and save the date!



### Live webcast: Accepted! What's Next?

- Tuesday, October 11 at 5:30 p.m.
- Thursday, December 15 at 5:30 p.m.
- Wednesday, February 22 at 5:30 p.m.
- Thursday, April 11 at 5:30 p.m.

For more information, dates, and archived webcast presentations, visit [mtu.edu/admissions/events](http://mtu.edu/admissions/events).



# DOLLARS AND SENSE: FINANCING YOUR MICHIGAN TECH EDUCATION

Paying for college is a big deal. Financing your education is made possible by four types of funding sources:

- Scholarships
- Grants
- Loans
- Employment

To be considered for the most opportunities, start by filing your Free Application for Federal Student Aid (FAFSA).



### Live webcast: Financial Aid 101

Wednesday, November 2 at 6:00 p.m. (eastern)  
Tuesday, January 17 at 6:00 p.m. (eastern)

### □ Complete Your FAFSA

To be considered for all University-awarded financial aid, including grants, loans (for students and parents/guardians), work-study employment, and other aid, complete your FAFSA. File online at [fafsa.gov](http://fafsa.gov). Our federal school code is **002292**. Although your social security number was not required when you applied for admission to Michigan Tech, it is required for FAFSA filing purposes. To avoid delays in processing your FAFSA, please call the Admissions Office at **888-688-1885** to provide your social security number.

File by the due dates listed below for the best opportunities. FAFSAs processed after these dates will receive consideration for remaining aid.

FAFSA Dates to Remember			
Semester	FAFSA to file	Begin to file	Due date
Spring 2017	2016-2017	As soon as possible	December 1, 2016
Summer 2017	2016-2017	As soon as possible	April 1, 2017
Fall 2017	2017-2018	October 1, 2016	March 1, 2017

If you've already filed a FAFSA, but did not have the results sent to Michigan Tech, visit [fafsa.gov](http://fafsa.gov) or call **800-433-3243** to have the results released to us.

### Scholarships

Michigan Tech offers merit-based scholarships for both first-year and transfer students.



#### First-year students

With your acceptance to Michigan Tech, you'll automatically be considered for merit-based scholarships. Michigan residents are eligible for Presidential Scholar Program awards, and non-Michigan residents are eligible for National Scholar Program awards.

Also, start checking with your high school guidance office, community foundations, parents' place of employment, and other outside sources for scholarship opportunities.



### Transfer students

Both Michigan and non-Michigan residents are eligible for transfer scholarships. Non-Michigan residents are eligible for transfer awards through the National Scholar Program, and Michigan residents are eligible for the Michigan Tech Transfer Scholarship. In both cases, you're automatically considered for these awards.

For more information, visit [mtu.edu/admissions/tuition/scholarships](http://mtu.edu/admissions/tuition/scholarships).

### Your Financial Aid Award Letter

If you are awarded financial assistance as a result of completing the FAFSA, you will receive a financial aid award letter that includes the following detailed information:

- Amount of merit- and need-based aid you have been awarded
- Estimated annual cost of attendance for the upcoming school year
- Important financial aid deadlines and information
- Information about how to accept your awards and the terms and conditions of your financial aid



### Live webcast: Understanding Your Financial Aid Award

Wednesday, December 7 at 6:00 p.m. (eastern)  
Monday, February 20 at 6:00 p.m. (eastern)  
Wednesday, April 5 at 6:00 p.m. (eastern)

## Financial Aid Notification Schedule

Semester	Notification begins
Spring 2017	December 31, 2016
Summer 2017	April 30, 2017
Fall 2017	February 1, 2017

### Employment

Regardless of when you start at Michigan Tech, you'll find many opportunities for student employment. Even if you don't qualify for work-study (as a result of your FAFSA/Expected Family Contribution), most departments on campus hire students for part-time jobs. On average, 2,000 students are employed on campus. Off-campus employment opportunities are also available. Get details at [mtu.edu/admissions/tuition/employment](http://mtu.edu/admissions/tuition/employment).

### Cost of Attendance

Your cost of attendance is an estimate of your annual expenses, including tuition, fees, room and board, books and supplies, and personal needs and travel. To get an estimate of your net cost after financial aid and scholarships, visit [mtu.edu/admissions/tuition/calculator](http://mtu.edu/admissions/tuition/calculator).

See estimated undergraduate student expenses on page 5.

## 2016-2017 Estimated Undergraduate Student Expenses

	Michigan Residents	Non-Michigan Residents
Tuition <sup>1,2</sup>	\$14,334	\$30,668
Required Fees <sup>3</sup>	300	300
Lab and Course Fees	536	536
Room and Board <sup>4</sup> (Gold meal plan)	10,105	10,105
TOTAL billed expenses	\$25,275	\$41,609
<b>Additional costs to consider</b>		
Books and Supplies	1,200	1,200
Personal Needs and Travel (est.)	1,740	1,740
Loan Origination Fee <sup>5</sup>	64	64
<b>Annual TOTAL <sup>6</sup></b>	<b>\$28,279</b>	<b>\$44,613</b>

*Note: Books and personal/travel expenses are not included on your bill, but they are helpful to plan for.*

1. Tuition is based on a plateau rate for students taking 12-18 credit hours per semester.
2. Students who have earned more than 60 credits will be charged upper-division tuition. See [mtu.edu/finaid/tuition/cost](http://mtu.edu/finaid/tuition/cost) for details.
3. Required fees per semester cover the Experience Tech initiative and the student activity fee.
4. Room-and-board rates vary, depending on meal plan and residence hall assignment.
5. The loan origination fee is only charged to students receiving federal direct loans.
6. Tuition, fees, and room and board are payable by semester.

## Student Tuition and Your Bill

Your bill will be available online through **MyMichiganTech**. Some students may receive a second bill, which will be available during the third week of each semester and will reflect any changes in financial aid, housing, and/or course adjustments made (additions or drops). It is possible to use financial aid to help pay for your books; details will be in your Financial Aid Award Letter.

### Billing Schedule

Semester of enrollment	First billing date Due date	Second billing date Due date
Spring 2017	December 2, 2016 January 4, 2017	January 24, 2017 February 10, 2017
Summer 2017	April 7, 2017 May 3, 2017	May 23, 2017 June 9, 2017
Fall 2017	July 14, 2017 August 30, 2017	September 19, 2017 October 6, 2017

## Payment Options

Michigan Tech offers several options for paying your bill:

- Check or money order
- Credit card\* (online)
- e-check (online)
- Installment Prepayment Plan
- Five- or Four-Payment Plan

View more details at [mtu.edu/student-billing](http://mtu.edu/student-billing).

\*There is a 2.3 percent nonrefundable service fee for MasterCard and Discover payments. We do not accept Visa or American Express.

For more information, contact the Student Financial Services Center at **906-487-2622**, email [student-billing@mtu.edu](mailto:student-billing@mtu.edu), or visit [mtu.edu/student-billing](http://mtu.edu/student-billing).



# CAMPUS LIVING

## Apply for Housing

In the Michigan Tech residence halls, you'll enjoy a community that values friendship and academic success. All single students, apart from transfer or commuting students living with a parent/guardian, must live on campus during their first year at the University. Students receiving merit-based scholarships through the Presidential Scholar, National Scholar, or Leading Scholar programs are required to live in University housing for their first two academic years.

Apply early for housing by completing and submitting your residence hall application. The residence hall application will be available via **MyMichiganTech** after your enrollment deposit has been received.

Please note we make housing assignments based on the following criteria:

- Assignment priority is given to students that find a match using our Roommate Matching system in order of the date and time matched in the system.
- After all students who used Roommate Matching are placed into housing, assignments are determined by the date we receive your application—the sooner you apply, the better!



### Live webcast: Housing Options

Wednesday, February 15 at 5:30 p.m. (eastern)

## Residence Halls

The halls are a great place for you to study and meet new people. In addition, professional and student staff are available to answer your questions. You may choose to live in one of three residence halls. Each hall is different in size and appearance, but is similar in service with its own dining hall, study lounge, game room, kitchenettes, sauna, laundry facility, fitness room, reception desk, and lounges.

- Douglass Houghton Hall (DHH), our smallest residence hall, houses about 350 students. This three-story historic building was constructed in the late 1930s and characterizes that time period with its beautiful architectural details.
- McNair Hall has a great view of the Keweenaw Waterway and consists of three buildings. West McNair has two stories and is connected to East McNair's five stories by the dining hall. There are about 800 students living in McNair.
- Wadsworth Hall (Wads) is the largest hall—one-quarter-mile long, five stories high, and home to approximately 1,050 students. In addition to a vibrant residence hall community, Wads offers the Campus Café, a convenient place to meet friends, relax away from the books, and enjoy late-night dining and snacking options.

## Choose a Roommate—Fall Semester Only

Once you submit your residence hall application you will be invited to use our Roommate Matching program (beginning May 1) to request a roommate you know or to search for the best match. You have until June 1 to enter your roommate choice, but it's best to match as early as possible. Students who match through the Roommate Matching program are placed by the date/time of their match confirmation. If you choose not to use this program, we will assign you a roommate.

**Note: students enrolling for spring or summer semesters are not eligible for the Roommate Matching program.**

On August 1, you'll receive notification of your hall, room, and roommate assignment. New students submitting their housing materials after August 1 will receive their residence hall assignment when they arrive on campus.

For more information, contact Housing and Residential Life at **906-487-2682**, [housing@mtu.edu](mailto:housing@mtu.edu), or [mtu.edu/housing](http://mtu.edu/housing).



### Live webcast: Roommate Matching

Wednesday, April 26 at 5:30 p.m. (eastern)



## Theme Communities

Theme Communities are areas in residence halls for students with similar interests. Students live, learn, and collaborate within these communities. Through increased educational programming, faculty involvement, and peer-to-peer connections, these student-centered communities extend learning beyond the classroom. If you are interested in living in a Theme Community, please rank your preferences on your residence hall application.

There are three basic requirements of Theme Community members:

- Be open and ready to create meaningful connections with your peers, faculty, and administration. Commit to engaging, collaborating, and creating your future alongside like-minded individuals.
- Complete a 1-credit Creating Your Success (UN 1010) course in the fall semester with other Theme Community students. All Theme Community students are automatically enrolled in this course (applies only to first-year students and transfer students with fewer than 30 credits).
- Pay a \$30-per-semester fee to support additional programming, activities, and peer staff (included on your student bill).

For more information about Theme Communities, visit [mtu.edu/housing/campus/communities](http://mtu.edu/housing/campus/communities).



### Live webcast: Housing Options

Wednesday, February 15 at 5:30 p.m. (eastern)

## Michigan Tech Apartments

The Michigan Tech Apartments offer on-campus living options for upper-class or graduate students.

- Hillside Place offers apartment-style living to upper-class students, transfer students, graduate students, and international students. Each furnished apartment contains four bedrooms, two bathrooms, and a living space with beautiful panoramic views. All utilities are included (with the exception of phone service), and you'll enjoy a fully equipped kitchen with modern amenities (electric range, microwave oven, and full-size refrigerator), laundry facilities, study lounges, a fitness center, and more.
- Daniell Heights Apartments offer one- and two-bedroom units for student families, graduate students, and undergraduates who are 21 and older. Utilities are included (with the exception of phone service). Apartments are furnished, including stove and refrigerator, and each building features laundry facilities.

For more information or to apply for an apartment, call **906-487-2682**, email [housing@mtu.edu](mailto:housing@mtu.edu), or visit [mtu.edu/housing](http://mtu.edu/housing).

## Michigan Tech Theme Communities

Theme Community	Community Description	Location
Computer Science	This community is centered around Computer Science or Software Engineering students. Within this community, a network of support is fostered through increased educational programming, faculty involvement, and peer connections. You will live, learn, and grow in your shared passion for computers and computer-related technology.	McNair Hall
First-Year Experience (FYE)*	Interact, explore, succeed! Make your first step at Michigan Tech the right one with this exciting community. Become a member and experience new ideas and cultures, plus cultivate new friendships. Together, with the support of your fellow first-year Huskies, you will have all the resources and experiences to pave a trail of success!	Wadsworth Hall
Forest Resources and Environmental Science (FRES)*	FRES is a close-knit community that integrates academics and an appreciation for the natural world. Through educational programming, faculty interactions both in and out of the classroom, and engaging activities, students majoring in Forestry, Applied Ecology and Environmental Sciences, Natural Resources Management, or Wildlife Ecology and Management create a culture of academic and social success.	Wadsworth Hall
Leadership*	The ability to be an effective leader is vital to being successful in whatever career you choose. As a member of the Leadership community, you will develop your leadership skills through development opportunities, leadership positions, community service projects, and networking with peers and administration.	Wadsworth Hall
Summit*	Summit is all about the wellness of the mind, body, and spirit. Within this alcohol-free community, experience how staying physically active and working toward balance and health can positively affect your academics. Members of this community engage in intramural sports, outdoor activities, campus traditions, and much more.	McNair Hall
Visual and Performing Arts (VPA)	The VPA community values the beauty of the arts (music, dance, graphic arts, photography, and theatre). Creativity, innovation, and collaboration are integrated into educational programming, activities, and daily interactions. Members of this community also have unique opportunities to build relationships and connect with talented and experienced departmental staff, faculty, and peers who share similar interests.	Wadsworth Hall
Women In Engineering (WIE)*	The WIE community fosters an atmosphere of academic and social support for female students studying engineering disciplines. Members of this community benefit from increased faculty interactions, educational programming, social activities, and the opportunity to get involved with the Society of Women Engineers (SWE).	McNair Hall

\*Denotes alcohol-free community



continued



# COMMUTING AND OFF-CAMPUS LIVING

## Residence Hall Dining Services

Our meal plans provide unlimited access to all three residential dining halls. There is no limit to the number of times you may enter a dining hall to eat a complete meal or stop in for a snack or drink. You will choose from one of three meal plans when you complete your residence hall application:

Meal Plan	Access	Guest Meal Passes	Dining Dollars
Silver	Unlimited	4 per semester	\$100 per semester
Gold	Unlimited	8 per semester	\$150 per semester
Platinum	Unlimited	16 per semester	\$300 per semester

You may use your meal plan in any of the residential dining halls. Meal hours are posted throughout the halls. In the case of a class, lab, or work schedule conflict, arrangements can be made to pick up a meal.

Dining Services offers a variety of popular entrées at each meal, including vegetarian options; salad, deli, and pasta bars; and stir fry, pizza, dessert, ice cream, waffle, and beverage stations. If you have an allergy or other dietary need, let the Dining Services staff know—we will work with you to provide the food you need.

## Dining Dollars

Dining Dollars add flexibility to your meal plan. They are included in the Silver, Gold, and Platinum meal plans and allow you to eat at convenient times and locations. Dining Dollars are accepted at the Campus Café (in Wadsworth Hall), the Aftermath Café (in Fisher Hall), North Coast Deli and Grill (in the Memorial Union), the Library Café, Fusion (in the Dow lobby), Coaches Corner (in the SDC), vending machines throughout campus, and the Huski Cafe (at the Mont Ripley Ski Chalet).

Unused Dining Dollars are transferable from fall to spring semester; however, any Dining Dollars not used by the end of spring semester are nonrefundable.

For more information, email Dining Services at [campus-dining-l@mtu.edu](mailto:campus-dining-l@mtu.edu) or visit [mtu.edu/dining](http://mtu.edu/dining).

## Register for Residential Parking

It's easy to get around campus and the Houghton community, so first-year students are encouraged to leave their vehicles at home. Michigan Tech offers services to make transportation easier, including shuttles that run throughout campus and the City of Houghton, and Zipcars—cars available for students to rent by the hour or day.

If you will be living on campus and choose to bring a vehicle, you must register it with the University. Transportation Services coordinates vehicle registration and parking; watch **MyMichiganTech** for details about when you can register your vehicle.

If you plan to bring a motorcycle, scooter, or snowmobile to campus, you must register it with Transportation Services. Note: there is no winter storage available for motorcycles and scooters.

For more information, contact Transportation Services at **906-487-1441**, [parking@mtu.edu](mailto:parking@mtu.edu), or [mtu.edu/parking](http://mtu.edu/parking).

If you are a Michigan Tech student from the local area, you may choose to live at home with your parent(s)/guardian(s). All of the same resources and opportunities are available to students who commute to campus, and we encourage you to take advantage of them and get involved.

Commuter Assistants are fellow students available to talk, answer questions, and address concerns. They plan free events for commuter students to get involved and to get to know one another. Each month, commuters are informed of upcoming campus events and are made aware of issues relevant to commuting to campus.

For more information, email [commuters@mtu.edu](mailto:commuters@mtu.edu).

## Commuter Meal Plans

Meal options are available for commuter students—if you would like to eat in the residential dining halls, or if you prefer eating in retail dining operations like North Coast Deli and Grill and the Campus Café.

The Top Dog Express Meal Plan can be purchased in blocks of 10, 25, 50, or 75 meals. The more meals you purchase, the less you pay per meal. This plan can be used in any residential dining hall (DHH, McNair, or Wadsworth) and features all-you-care-to-eat, buffet-style dining.

Express Cash is a debit card program and is available as a feature of your ID card. It operates like a no-interest checking account. By opening an account, you can use your ID at campus locations, including:

- Michigan Tech Campus Store
- University Images
- North Coast Deli and Grill
- Memorial Union
- Campus Café
- Central Ticket Office
- Mont Ripley and the Huski Cafe
- Tech Express Office in the Van Pelt and Opie Library
- Library Café
- Coaches Corner
- Fusion
- Aftermath Café

Both options can be purchased at the HuskyCard service area in the Van Pelt and John and Ruanne Opie Library. For more information, visit [mtu.edu/dining/about/meal-plans](http://mtu.edu/dining/about/meal-plans).

## Register for Commuter Parking

If you'll be commuting to campus, you must register your vehicle with the University before classes begin. There are a couple ways to register:

- Online at [mtu.edu/facilities/parking/information](http://mtu.edu/facilities/parking/information)
- In person at Transportation Services, in room 100 of the Administration Building, across from the Student Financial Services Center

For more information, contact Transportation Services at **906-487-1441**, [parking@mtu.edu](mailto:parking@mtu.edu), or [mtu.edu/parking](http://mtu.edu/parking).

## Housing

Whether you're looking for low-maintenance campus living geared toward slightly older students, a home for you and your family, or a place that gets you off campus and into the local community, you'll find plenty of options.

- The Michigan Tech Apartments offer on-campus living options for upper-class and graduate students. Apartments are fully furnished and include most utilities. See page 6 for details, or visit [mtu.edu/housing](http://mtu.edu/housing).
- For information about off-campus housing, including a list of available properties, check out the off-campus housing list at [usg.mtu.edu/usg/housing](http://usg.mtu.edu/usg/housing), or contact the Undergraduate Student Government at **906-487-2406** or [usg@mtu.edu](mailto:usg@mtu.edu).



# ACADEMIC DETAILS

## □ View Our Undergraduate Catalog

Find degree requirements and course descriptions in Michigan Tech's Undergraduate Catalog at [mtu.edu/catalog](http://mtu.edu/catalog).

## □ Send Your Final Transcript

An official final transcript is required prior to enrollment. Your final transcript will be reviewed by the Admissions Committee to verify continued academic success since the time of your acceptance to Michigan Tech. If you experienced a departure from your previous academic performance, you will be contacted and asked to provide a detailed explanation which will be reviewed to determine if you may still enroll at the University.

To be considered official, a transcript must be sent directly to Michigan Tech by the institution issuing the transcript, or from a transcript service such as Parchment. Transcripts stamped "issued to student" or those hand delivered, even if in a sealed envelope, are not acceptable.

### FY First-year students

Request your final transcript through Parchment or contact your high school upon graduation and ask them to send your official transcript showing your final grades and graduation date.

### T Transfer students

If you have taken additional courses that did not appear on the transcript submitted with your application for admission, contact the registrar's office at your current institution to request that an official transcript with final grades be sent to us.

## □ Notify Us of Transfer Credit

### FY First-year students

If you completed college-level courses during high school, contact the registrar's office at the institution(s) and request that an official transcript with your final grades be sent to Michigan Tech's Admissions Office. Courses will be evaluated for transfer credit.

### T Transfer students

If you are taking additional courses that do not appear on your most recent transcript, email a list of those courses to [transfer@mtu.edu](mailto:transfer@mtu.edu). The courses will be added to your record as pending transfer credit.

Transfer credits pending but not validated with final transcripts will be dropped from your record. As a result, any scheduled courses that require the dropped transfer course(s) as a prerequisite will also be dropped from your course schedule.

## □ Test Scores

### FY First-year students

- Official scores from the SAT and/or ACT are used to determine scholarships.
- Your scores on Advanced Placement (AP), International Baccalaureate (IB), or College Level Examination Program (CLEP) may earn you credit or placement. Scores must be sent directly from the testing agency. To see a list of scores needed to receive Michigan Tech credit, go to [mtu.edu/admissions/apply/ap-ib-clep](http://mtu.edu/admissions/apply/ap-ib-clep).

### T Transfer students

- If you received college credit at your previous institution for AP, IB, or CLEP examinations, your test scores will need to be sent to Michigan Tech directly from the testing agency. To see a list of scores needed to receive Michigan Tech credit, visit [mtu.edu/admissions/apply/ap-ib-clep](http://mtu.edu/admissions/apply/ap-ib-clep).

## Course Placement

Michigan Tech offers placement tests to ensure you are beginning your course work at the right level.

## □ Take the ALEKS Math Placement Assessment

FY  
T

All incoming students are required to take the online ALEKS Math Placement Assessment. Students with qualifying AP, IB, or CLEP scores or earned college-level math credit for college algebra, trigonometry, precalculus, or calculus are exempt from the requirement. Your initial course placement is important, as your math class is a prerequisite for many other courses that are required for your degree. Starting in a math course that is not right for you could increase the time it takes you to graduate. Take the assessment when it becomes available, and take it seriously. Your complete course schedule will not be available until you take the assessment.

The online ALEKS Placement Assessment covers material from basic math through precalculus and will take approximately 90 minutes to complete. During the testing period, you will access the assessment online, from any computer, through your MyMichiganTech account.

After the assessment, a targeted Prep and Learning Module is available for you to review and learn material. After working in the Prep and Learning Module, you can take up to two additional online ALEKS Placement Assessments. Your math placement will be determined by the highest placement score earned.

A non-refundable \$25 fee—payable by credit card to ALEKS—covers the initial assessment, customized tutoring through the Prep and Learning Module, and two additional assessments (if desired).

Watch for details about the placement assessment. For more information, visit [mtu.edu/math/placement/aleks](http://mtu.edu/math/placement/aleks).



## Live webcast: Understanding the ALEKS Math Placement Assessment

Tuesday, April 25 at 5:30 p.m. (eastern)

## Chemistry

FY

Find details on chemistry course placement at [mtu.edu/chemistry/fyc](http://mtu.edu/chemistry/fyc).

## Modern Language

FY

If you plan to continue studying French, German, or Spanish at Tech, you must take the free online Modern Language Placement Exam to be placed into the correct course. Learn more about the test and view sign-up instructions at [mtu.edu/humanities/undergraduate/modern-languages/placement](http://mtu.edu/humanities/undergraduate/modern-languages/placement).

## Computer Science Knowledge Assessment

FY

Students enrolling in computer science, software engineering, or computer engineering must take the online Computer Science Knowledge Assessment to determine which introductory computer science course is best for them. Directions for this online test can be found at [mtu.edu/cs/undergraduate/placement](http://mtu.edu/cs/undergraduate/placement).





### Scheduling Classes

**FY** *First-year students enrolling in the spring or summer semester*  
Your schedule will be created by the Registrar's Office based on your major, ALEKS Math Placement Assessment score, AP/IB/CLEP score(s), and transfer credits received.

**T** *Transfer students with fewer than 30 credits enrolling in the spring or summer semester*  
Make schedule changes by contacting the Registrar's Office at **906-487-2319** or [schedule@mtu.edu](mailto:schedule@mtu.edu).

**FY** *First-year students and transfer students with fewer than 30 credits enrolling in the fall semester*

**T** Your schedule will be prepared for you by the Registrar's Office in mid-July. Engineering students are scheduled into cohorts (groups of students who take the same courses together) based on your ALEKS or AP score(s) and any transfer credit received.

Be sure to review the recommendations on page 8 regarding the ALEKS Math Placement Assessment. Completing your assessment by the deadline date will allow you to have the most complete schedule possible and will ensure you're placed in the best course for you—possibly avoiding unnecessary coursework and tuition.

Your initial schedule may not reflect full-time status (12 credits or more), but all first-year students are billed as full time, which will make you eligible for financial aid. Any necessary adjustments to your bill will be made in August.

During Orientation, you will be able to add other necessary courses (co-curricular courses, general education, electives) to complete your fall schedule or make changes after consulting with your academic advisor. Changes may also be made by contacting the Registrar's Office at **906-487-2319** or [schedule@mtu.edu](mailto:schedule@mtu.edu).

**T** *Transfer students with more than 30 credits enrolling in any semester*  
Your transfer evaluation will be sent to your academic advisor, who will contact you with course recommendations prior to registration. You will be able to schedule your classes through **MyMichiganTech**, by calling the Registrar's Office at **906-487-2319**, or by contacting your advisor.

### □ Get Your Books

Once you receive your course schedule, you may order your books online prior to the start of the semester through the Michigan Tech Campus Bookstore. After you place your order, your books will be available for pickup when you arrive on campus. Visit [bookstore.mtu.edu](http://bookstore.mtu.edu) to place your order.

For more information, contact the Campus Bookstore at **906-487-2410** or [campusstore@mtu.edu](mailto:campusstore@mtu.edu).

We know you need to be healthy and happy to get the most out of your college life. If you should find yourself under the weather or in need of help, there are resources available to you.

### □ Complete CampusClarity: Think About It

All new students are required to complete a three-part online course called Think About It by CampusClarity. This course was created by students for students and is designed to help you examine the issues of hooking up, substance abuse, sexual violence, and healthy relationships through interactive, realistic scenarios, and guided self-reflection. The course promotes a healthier and safer campus environment for everyone. Watch your Michigan Tech email account in August for the information you'll need to start the course.

### Health Services

Students have immediate access to healthcare services at Upper Great Lakes Houghton Family Health Center located inside the UP Health System University Center, attached to the Student Development Complex. The clinic has student walk-in hours every weekday morning and afternoon. Immediate care is also available at UP Health System Express Care on Sharon Avenue, less than three miles from campus. Emergency services are available at the UP Health System Emergency Department in Hancock. Visit [portagehealth.org/student](http://portagehealth.org/student) to learn more.

### Counseling Services

The staff at Counseling Services is here to help you gain perspective and be successful, both personally and academically. Professional staff is composed of licensed therapists who possess personal counseling training and skills. The counseling staff works closely with all student support services at Michigan Tech and with mental health professionals both locally and in students' home areas. Services are free and confidential. For more information or to schedule an appointment, contact **906-487-2538** or [counseling@mtu.edu](mailto:counseling@mtu.edu). Twenty-four-hour emergency services are available by calling Public Safety and Police Services at **906-487-2216** and asking for the counselor on call.

### Student Disability Services

Student Disability Services at Michigan Tech is committed to assisting students with documented disabilities by providing accommodations and/or modifications. For more information, call **906-487-2212** or visit [mtu.edu/deanofstudents/students/disability](http://mtu.edu/deanofstudents/students/disability).

### Student Insurance

We recommend all students have health insurance coverage while attending Michigan Tech. However, all international and graduate students must have insurance, and domestic students may purchase insurance through us if they desire.

The Student Insurance Office at Michigan Tech offers health insurance to currently enrolled students, covering preventative services, basic medical care, and hospitalization.

For more information, visit [mtu.edu/hr/students/insurance](http://mtu.edu/hr/students/insurance), email [studentinsurance@mtu.edu](mailto:studentinsurance@mtu.edu), or call **906-487-1088**.



# HEALTHY LIVING continued

## Immunizations

We highly recommend all students have the following immunizations before coming to Michigan Tech:

- Meningococcal vaccination
- Tetanus-Diphtheria-Pertussis Vaccine (a primary series and a booster within the last 10 years)
- Measles-Mumps-Rubella (MMR) or Measles vaccine (two doses)
- Varicella vaccine (two doses if you have not had chicken pox)
- Hepatitis A vaccine
- Hepatitis B series (three doses)
- Pneumococcal vaccine (PCV13 and PPSV23)

- Human Papillomavirus vaccine (for males and females)
- Influenza vaccine for every flu season
- Tuberculosis test (for students from high-risk countries)

For more information visit [cdc.gov/vaccines](http://cdc.gov/vaccines).

## Chronic Medical Conditions

We recommend students with chronic medical conditions register with Student Disability Services in the Dean of Students Office in case they require support during the semester.

For more information, call **906-487-2212** or visit [mtu.edu/deanofstudents/disability/students/policy](http://mtu.edu/deanofstudents/disability/students/policy).



# ORIENTATION AND YOUR HUSKY CARD

Your first day of class will be here before you know it—prepare for your arrival on campus by familiarizing yourself with the Waino Wahtera Center for Student Success, submitting a photo for your HuskyCard, and planning for Orientation.

## Waino Wahtera Center for Student Success

The Waino Wahtera Center for Student Success is dedicated to helping you develop skills, attitudes, and values that will enhance your academic and personal success. Our staff offers you and your family a variety of programs, services, and opportunities to support your transition to Michigan Tech.

### Save the Date for Orientation

All new students attend Orientation prior to beginning classes at Michigan Tech. Orientation is designed to acquaint you with campus resources, inform you of important information about academics and co-curricular opportunities, and help you to meet fellow new students, current Tech students, and faculty and staff members.

Participation in Orientation is required for all new students, whether you are living on or off campus, so mark your calendar now and save the date. There are also Orientation programs for parents and family during Move-In Weekend, including Sibling Orientation.

Local accommodations are limited, so please make lodging reservations early if you have family members traveling with you for Move-In Weekend (August 26–27) and Orientation.

For more information, contact Orientation at **888-688-1885** or **906-487-3558**, [orientation@mtu.edu](mailto:orientation@mtu.edu), or [mtu.edu/orientation](http://mtu.edu/orientation).



**Live webcast: Move-In and Orientation**  
Wednesday, July 26 at 4:30 p.m.

### Submit a Photo for Your HuskyCard

Your Michigan Tech HuskyCard is your official photo ID; room and building access card; residence hall meal pass; and an on-campus declining balance card.

Submit your ID card photo online through **MyMichiganTech**, and watch your enrollment checklist for information about when you can submit your photo. Guidelines for photos and instructions on how to obtain your HuskyCard are available through the IT Customer Support Center at [support.it.mtu.edu/HuskyCards](http://support.it.mtu.edu/HuskyCards).

Once on campus, keep your card with you at all times—there is a fee to replace lost or damaged cards. Complete information is available at [it.mtu.edu/huskycard](http://it.mtu.edu/huskycard).

## Express Cash

The Express Cash program is available as a feature of your HuskyCard. It operates like a no-interest checking account. By opening an account, you can use your card at locations like the Campus Bookstore and University Images, the food court and cafés, the Rozsa and SDC ticket offices, the Outdoor Adventure Program Rental Center, printers and copiers, and vending machines across campus. You can manage your account online by adding funds and reviewing transactions.

Semester	First-year student or transfer student starting at Tech with fewer than 30 credits	Transfer student starting at Tech with 30 or more credits
Spring 2017	Sunday, January 15	Sunday, January 15
Summer 2017	Track A* and Track B* Contact <a href="mailto:orientation@mtu.edu">orientation@mtu.edu</a> for details	Track A* and Track B* Contact <a href="mailto:orientation@mtu.edu">orientation@mtu.edu</a> for details
Fall 2017	Sunday, August 27– Saturday, September 2 Move-In Weekend August 26–27	Friday, September 1

*\*Please note if you are starting at Michigan Tech during the summer semester as a new first-year or transfer student with fewer than 30 credits, you are also required to participate in the weeklong Orientation program, scheduled August 27–September 2, 2017.*



# NOTES

---



**Michigan  
Technological  
University**

# ACADEMIC CALENDAR

## Spring Semester 2017

January 9, Monday	Instruction begins
January 16, Monday	Martin Luther King Jr. Day recess, one day only
January 17, Tuesday	Classes resume
February 8, Wednesday 10:00 p.m.	Winter Carnival recess begins
February 13, Monday	Classes resume
March 3, Friday 10:00 p.m.	Spring Break begins
March 13, Monday	Classes resume
April 21, Friday	Last day of regular classes
April 24, Monday-April 28, Friday	Final exam period
April 28, Friday	Spring Semester ends
April 29, Saturday	Commencement

## Summer Semester 2017

May 8, Monday	Full session begins
May 8, Monday	Session A begins
May 29, Monday	Memorial Day recess, one day only
May 30, Tuesday	Classes resume
June 22, Thursday	Session A ends
June 23, Friday	Session A exam period
June 26, Monday	Session B begins
July 4, Tuesday	Independence Day recess, one day only
July 5, Wednesday	Classes resume
August 10, Thursday	Session B ends
August 10, Thursday	Full Session ends
August 11, Friday	Full Session, Session B exam period

## Fall Semester 2017

September 5, Tuesday	Instruction begins
September 8, Friday Noon	K-Day recess, one day only
September 11, Monday	Classes resume
November 17, Friday 10:00 p.m.	Thanksgiving recess begins
November 27, Monday	Classes resume
December 15, Friday	Last day of regular classes
December 16, Saturday	Midyear Commencement
December 18, Monday-December 22, Friday	Final exam period
December 22, Friday	Fall Semester ends

## Spring Semester 2018

January 16, Tuesday	Instruction begins
February 7, Wednesday 10:00 p.m.	Winter Carnival recess begins
February 12, Monday	Classes resume
March 9, Friday 10:00 p.m.	Spring Break begins
March 19, Monday	Classes resume
April 27, Friday	Last day of regular classes
April 30, Monday-May 4, Friday	Final exam period
May 4, Friday	Spring Semester ends
May 5, Saturday	Commencement

## Summer Semester 2018

May 14, Monday	Full session begins
May 14, Monday	Session A begins
May 28, Monday	Memorial Day recess, one day only
May 29, Tuesday	Classes resume
June 28, Thursday	Session A ends
June 29, Friday	Session A exam period
July 2, Monday	Session B begins
July 4, Wednesday	Independence Day recess, one day only
July 5, Thursday	Classes resume
August 16, Thursday	Session B ends
August 16, Thursday	Full Session ends
August 17, Friday	Full Session, Session B exam period

@michigantech

