

# University Senate

To: Board of Control  
From: Rudy Luck, University Senate President  
Re: University Senate Report  
Date: April 29, 2011

---

- Presidential evaluation
- Summary of meetings
- Proposals up to Apr. 14, 2011

# Historical insights

- Several reasons were cited for the low participation: Use of Web CT was difficult, the method was not confidential enough, and some felt they were not qualified to evaluate some or all of the questions.
- This year there will be several changes: the survey will be shorter – 1 page; the President's statement will be shorter; evaluations will be handled by off-campus software; survey questions will be personalized (avoiding topics like the strategic plan); Senators will be asked to take an active role to get faculty and staff to participate; there will be more communication in Tech Today.

# 2006-2010 PRESIDENTIAL EVALUATION RESPONSE RATE

Year	Eligible	% Partic	# quests	Pres Statement
2006	806	19.40	16	15 pp
2007	884	11.80	31	27 pp
2008	1339	27	14	5 pp
2009	1387	18	23	4 pp
2010	1375	23	23	6 pp
2011	1418	37	38	5 pp

160 pages of comments

Executive or Academic Administration:	15
Exempt Staff:	177
Faculty:	132
Non-Exempt Staff:	79
Status Not Reported:	115

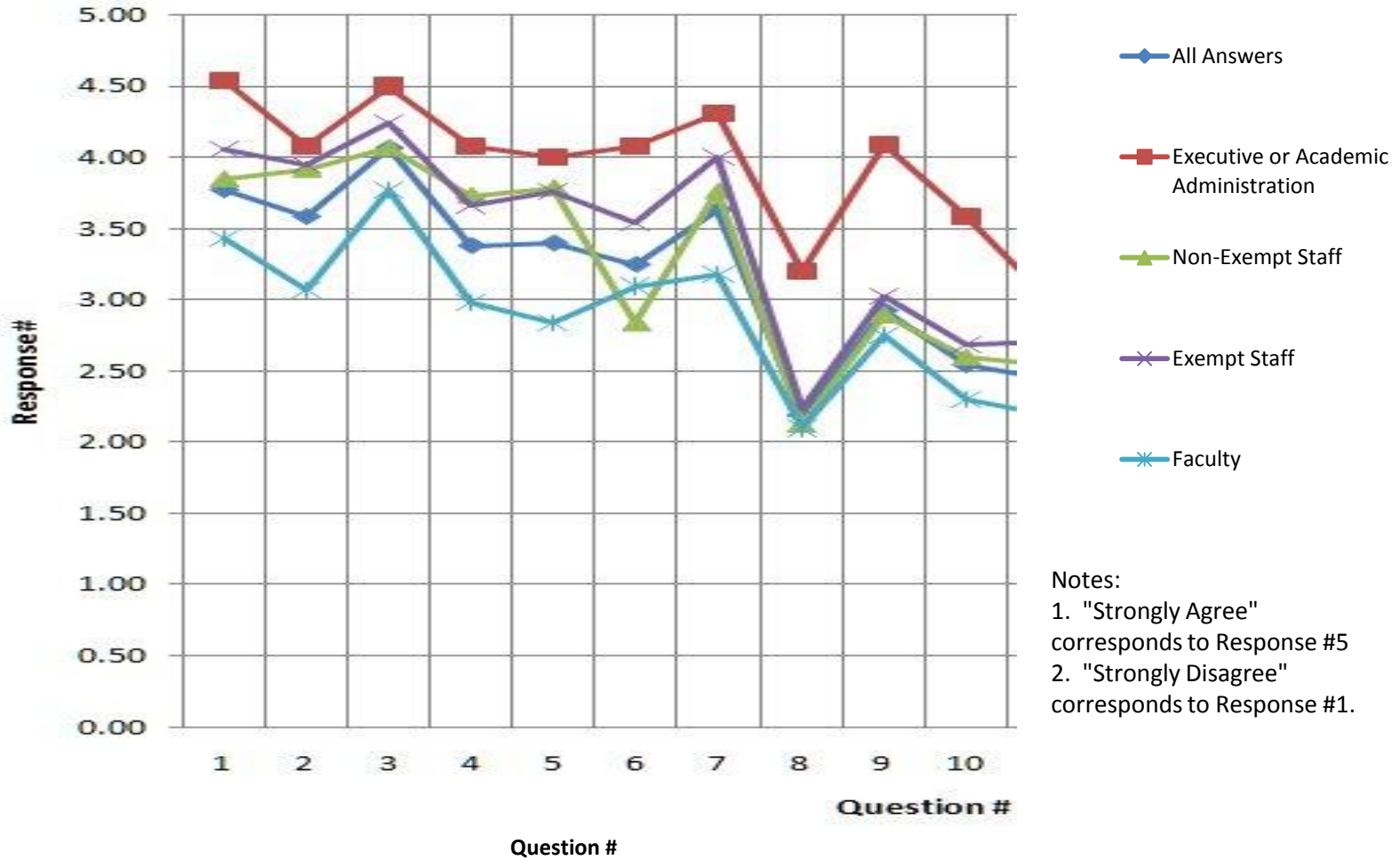
### Employees (October 1, 2009)\*\*

Number of faculty*	464
Number of staff	1,245
Total nonstudent employees	1,709

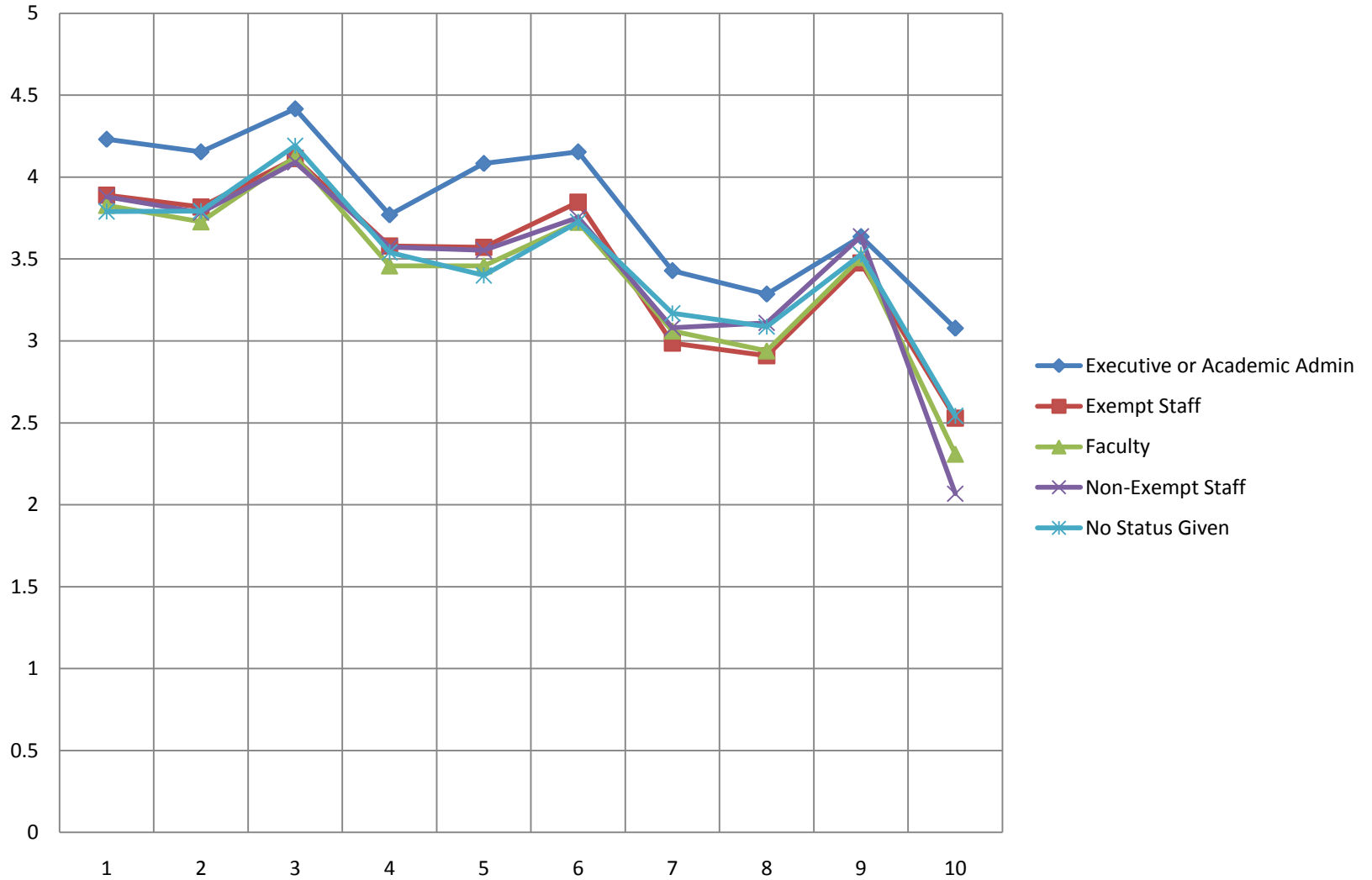
*\*Includes all tenured, tenure-track, non-tenure track instructional (447) and research (17) faculty. Also includes those faculty on sabbatical (10), faculty on unpaid leave of absence (2), visiting faculty (11). Deans (7), associate deans (3), department chairs (18), executives, and professional staff with tenure (6), are included in staff figures.*

*\*\*October 1, 2009 data is most recent available information on Employees.*

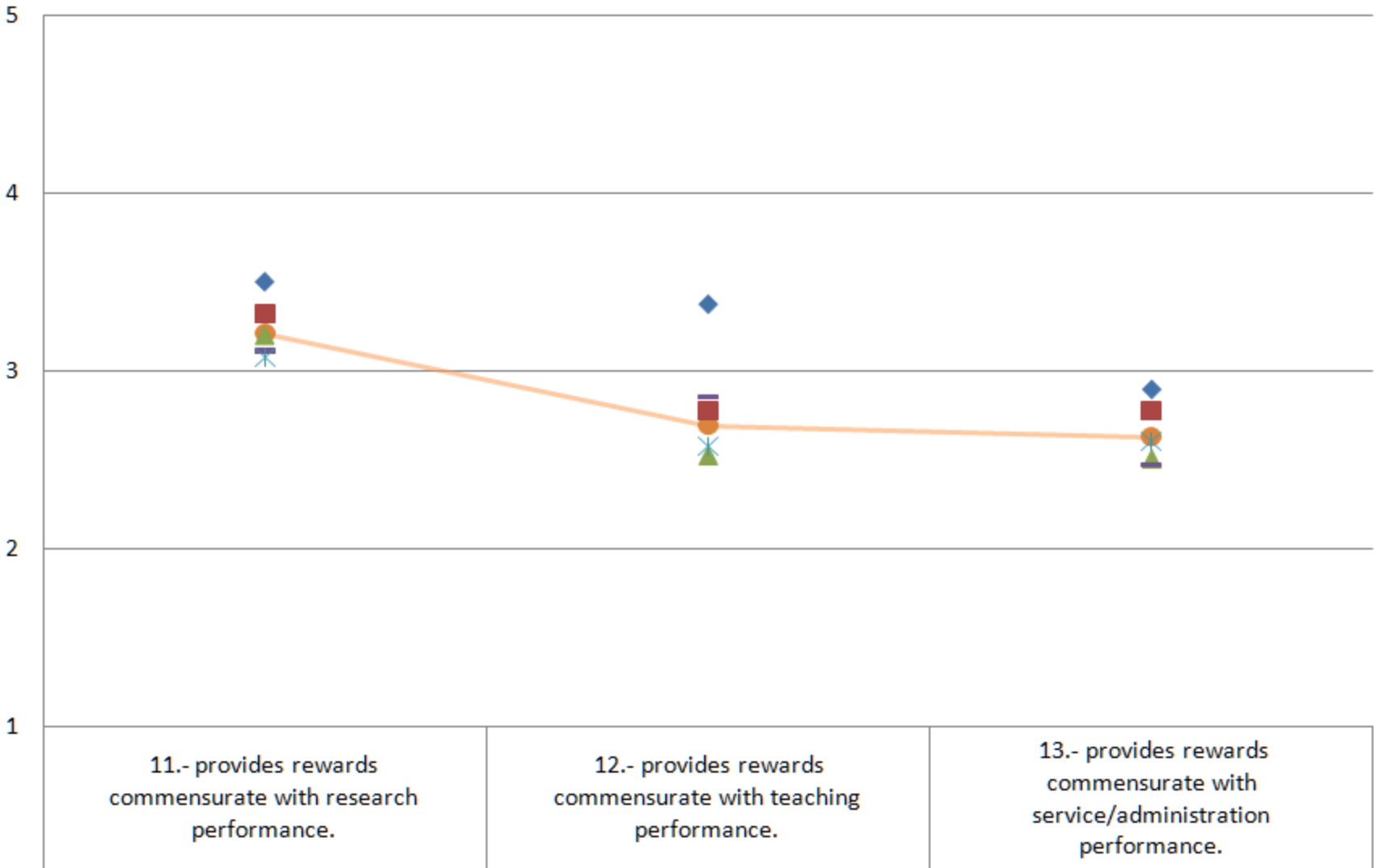
## 2009-2010 President's Evaluation Survey Results



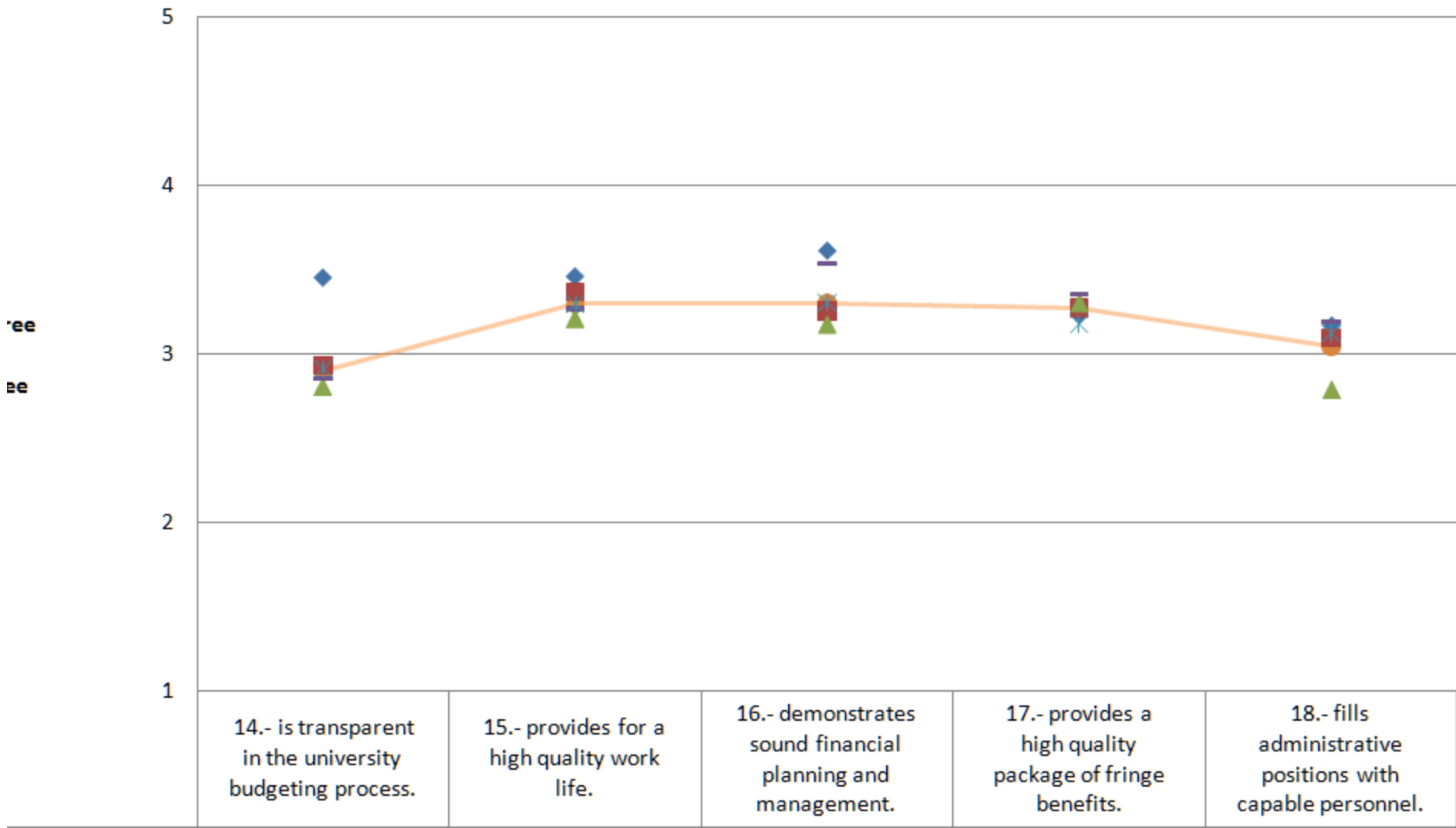
# 2010-2011 President's Evaluation



**11 - 13.** With respect to **Academic Affairs**, the executive team as a whole...



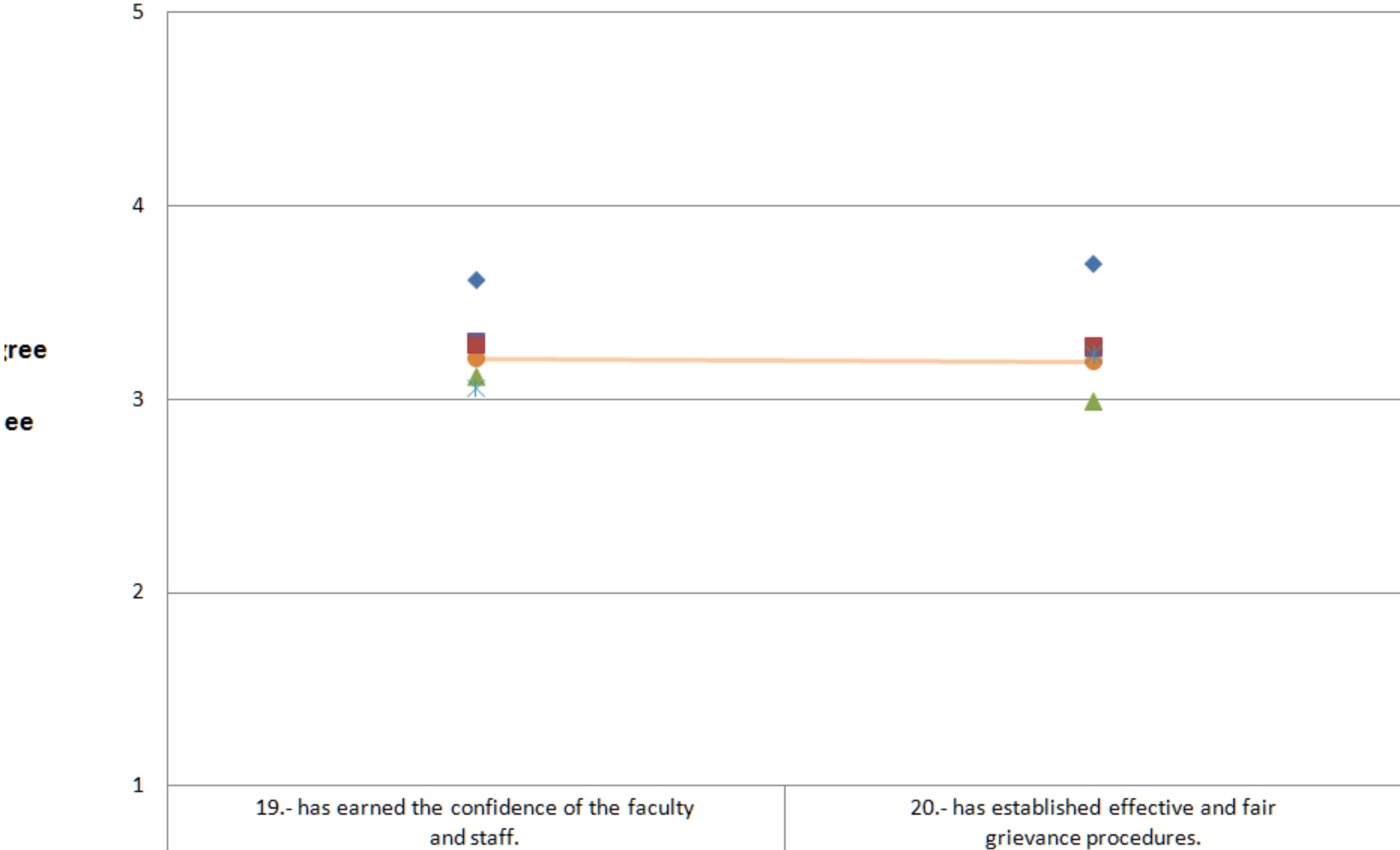
**14 - 18.** With respect to administration of **Administrative Affairs**, the executive team as a whole...



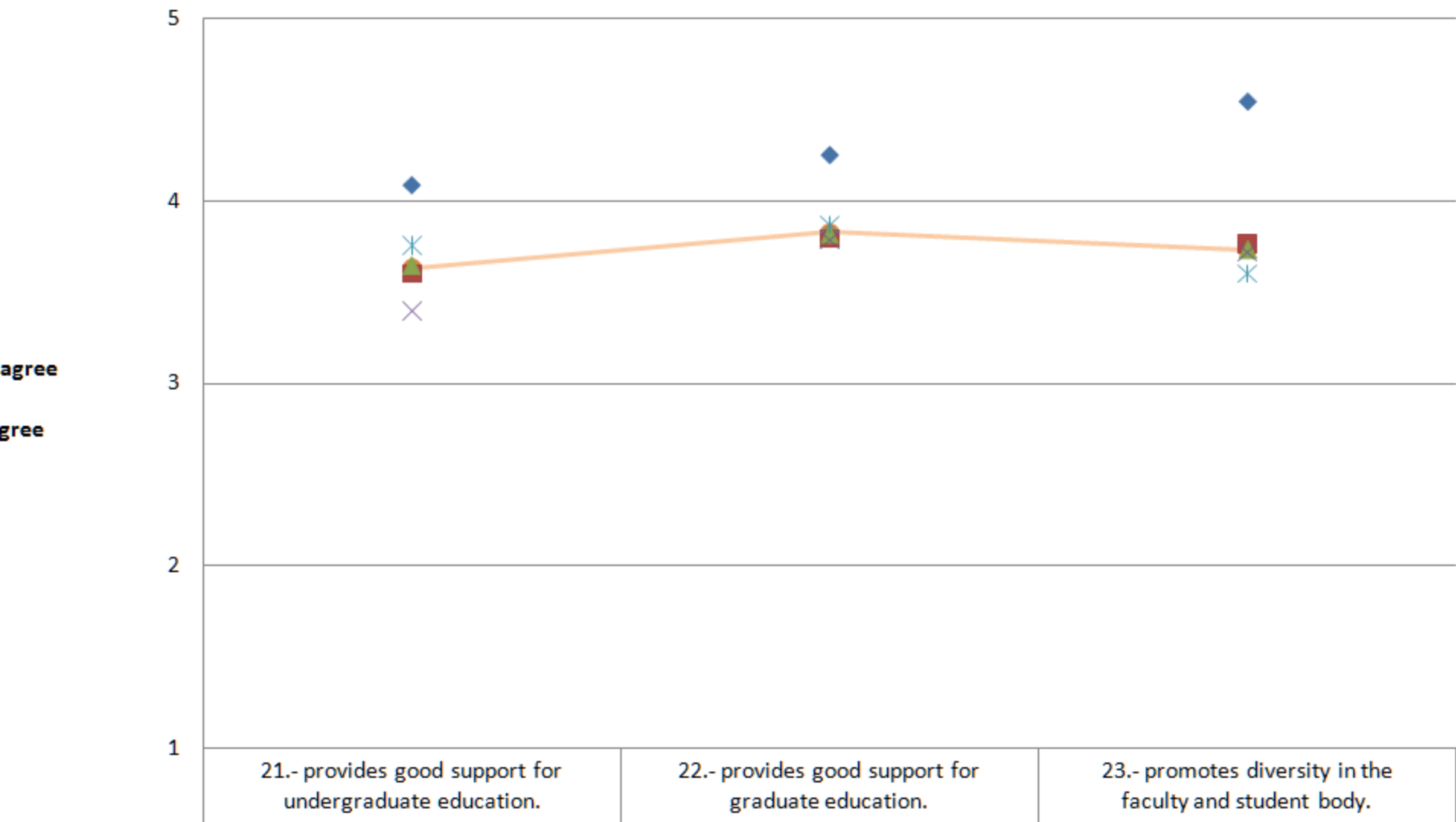
14.- is transparent in the university budgeting process.	15.- provides for a high quality work life.	16.- demonstrates sound financial planning and management.	17.- provides a high quality package of fringe benefits.	18.- fills administrative positions with capable personnel.
--	---	--	--	---



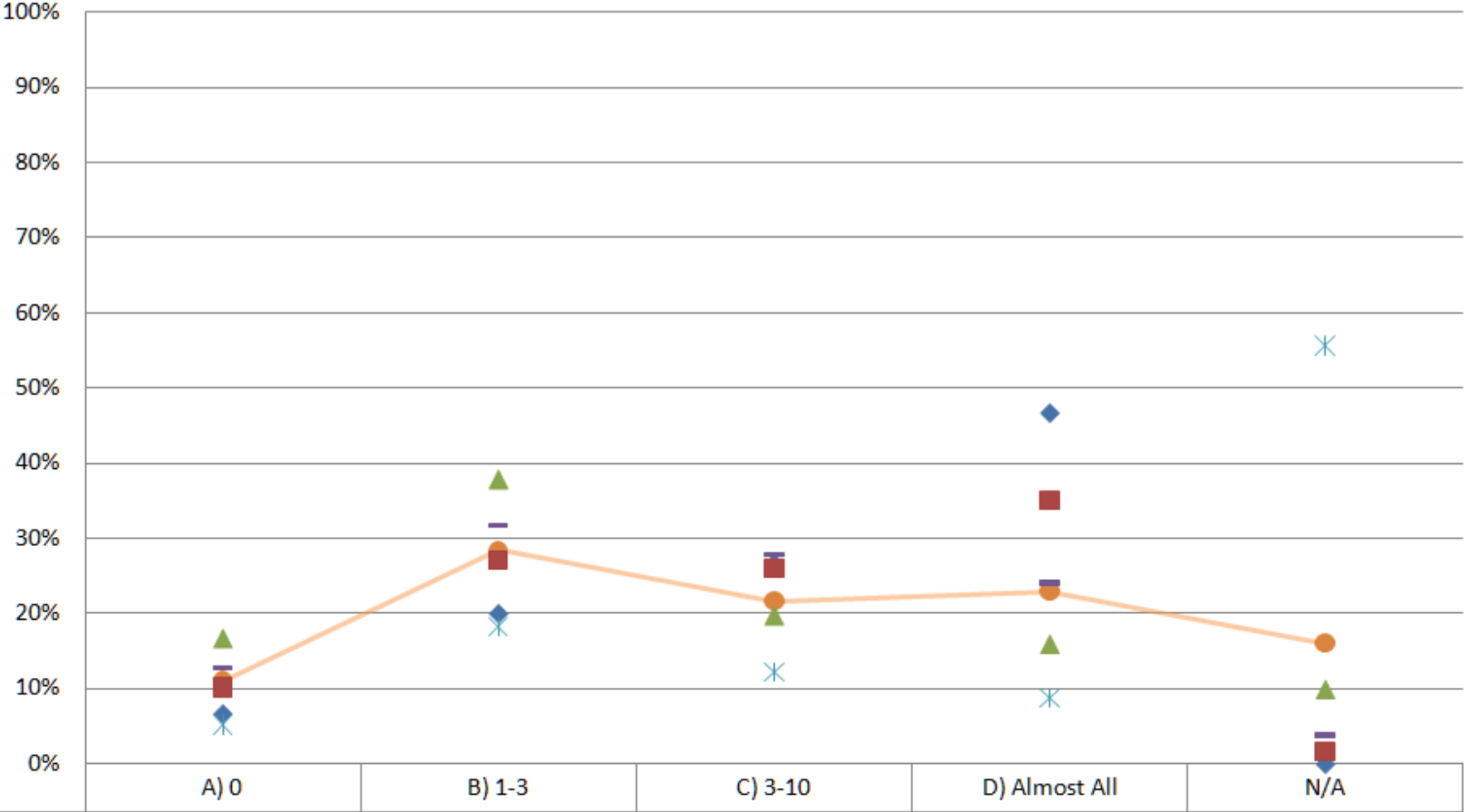
**19, 20.** With respect to **Personnel**, the executive team as a whole...



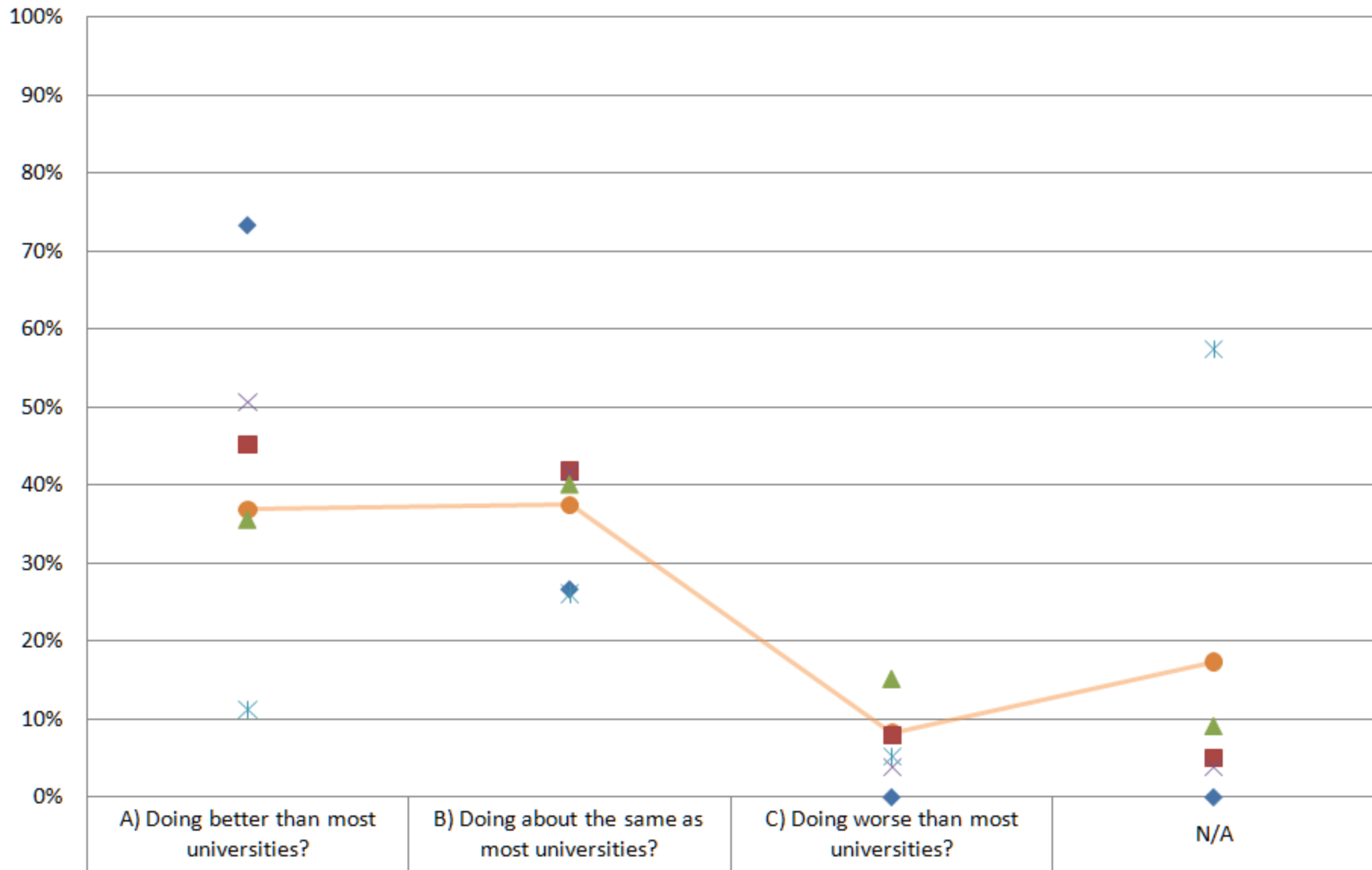
## 21 - 23. With respect to **Balance and Diversity**, the executive team as a whole...



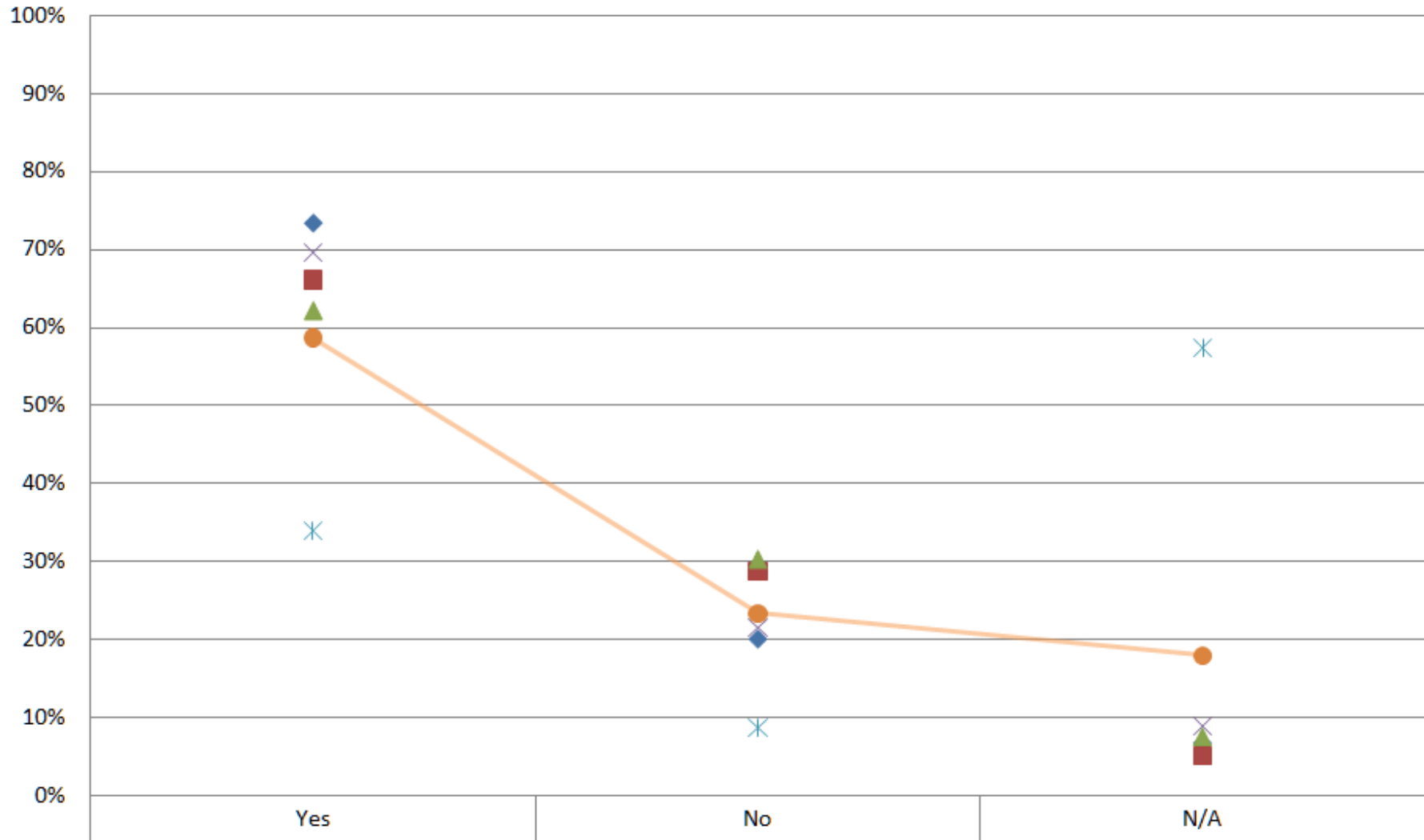
### 34. How many presidential campus forums have you attended either in person, on-line or through publication of transcripts/summaries in the last five years?



### 35. Do you think that Michigan Tech is...

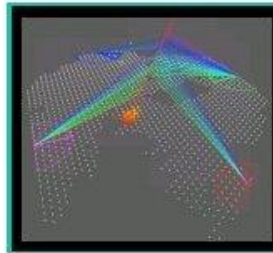


### 36.- Did you read the President's statement before you filled out this opinion survey?



# Summary of Senate Accomplishments for 2010-2011

- Search engine on website
- Meetings continue to have high rate of attendance
- Some meetings with Senate committees and Executive Team Liaisons
  - Finance (Reed and Greenlee)
  - Research (Reed)
  - Benefits (Horsch)
  - Academic and Governance (Seel)
- Continued the Teaching (Orr and Margraves) and Research (Fick and Nitz) award winning presentations



This picture emanates from research conducted in Brian Fick's and David Nitz's groups, co-winners of the 2010 research award. The cosmic ray event shown was seen by all four fluorescence detectors as well as the ground array. A blue photon has an energy of  $4.4 \times 10^{-19}$  Joules. This cosmic ray particle (probably a proton) had an energy of at least 5 Joules.

## Welcome to the University Senate of Michigan Technological University

The University Senate was established in 1958 by the Board of Control of Michigan College of Mining and Technology, now known as Michigan Technological University.

Senate Meetings are rebroadcast on Charter TV channel 20, Monday and Friday from 7-9 p.m. They are also available for viewing on streaming videos (current school year only) by going to [Menu, Meetings, Senate Meeting Videos](#), and choosing the meeting number you wish to view.

There are three Senate site specific search engines (SE) provided below. According to the Google Search Engine and, as of July 1, 2010, the Senate site currently contains 2517 URL's or pages. The first SE, Google, indexed 630 of these. Second, Bing, indexed apparently only 87. Strangely enough on some searches Bing reveals more than google. There is not much control over how these two SE's index or find pages on a site. The third, FreeFind, indexed 1917 (indexes up to 3000 pages free). It is therefore far more comprehensive than the first two (try the advanced procedure) but apparently these will grow with time and use. Therefore you are advised to use them all in finding information regarding history and precedent in your deliberations on Senate proposals.

Google™ Custom Search

Search ×

[search tips](#)

[advanced search](#)

search

search engine by freefind

- Various Executives/Assistants presented material to the Senate

Reed (Corp/Technology Transfer Support, Federal Conflict of Interest Regulations)

Seel (Issues Central to the University's Academic Mission, Start Up Task Force Report, tenure)

Greenlee (Financial update)

Lehman (Enrollment Report)

Walck (AQIP (2))

Hiller (2011 Benefit Changes)

Milligan (Centralized Computing Services)



- “Graduate Student Government” by Ben DePew and Jarod Maggio
- “Report on Undergraduate Student Government (USG)” by Erik Riutta
- Reports by Sabbatical Leave Committee, CATPR, Parking Task consultants, and BLG
- 14 Senate meetings, 11 Senate executive meetings, ca. 10 Provost encounters
- Addressed 52 proposals in one form or another

## 2010-2011 Senate Proposals

Proposal # and Title	Date Received in Senate Office	Committee Referral and Date	Senate Floor Introduction	Senate Result	Administrative Response
<a href="#">1-11</a> : "Parking Policy"	09/01/10	Institutional Policy Committee 09/01/10	09/15/10	Defeated by Senate 09/29/10	
<a href="#">2-11</a> : "Academic Renewal: An Amendment by Replacement of Senate Policy 110.1 (Proposals 21-02 and 30-04)"	10/19/10	Instructional Policy 10/19/10	10/27/10	Adopted by Senate 11/10/10 Senate Adopted clarification inserts 12/08/10	Approved by Admin with 2 inserts for clarification 11/22/10
<a href="#">3-11</a> : "Amendment to Senate Proposal 24-10: International Dual Graduate Degrees "	11/01/10	Curricular Policy 11/01/10	11/10/10	Adopted by Senate 12/08/10	Approved by Admin 12/20/10
<a href="#">4-11</a> : "Amendment of Senate Proposal 11-10, Graduate Certificates "	10/22/10	Curricular Policy 10/22/10	11/10/10	Adopted by Senate 12/08/10	Approved by Admin 12/20/10
<a href="#">5-11</a> : "Redefining Departmental Governance"	11/04/10	Academic Policy 11/4/10	11/10/10 revised and reintroduced 01/19/11	Adopted by Senate 02/02/11 Senate adopted amendments adding one more 03/23/11	Admin Approved with Amendments 03/11/11 Senate Amendment Approved by Admin 03/31/11
<a href="#">6-11</a> : "Proposal to Establish University-wide Procedures to Search for, Hire, and Evaluate the Performance of a Departmental Chair or School Dean "	10/20/10	Administrative Policy 10/20/10	11/10/10 revised and reintroduced 01/19/11	Adopted by Senate with editorial changes 02/02/11 Senate adopted amendments 03/23/11	Admin Approved with Amendments 03/11/11
<a href="#">7-11</a> : "Minor in Fish Biology "	10/29/10	Curricular Policy 10/29/10	12/08/10	Adopted by Senate 01/19/11	Approved by Admin 01/29/11
<a href="#">8-11</a> : "Proposal to Change Degree Title "	01/03/11	Curricular Policy 01/03/11	01/19/11	Adopted by Senate 02/02/11	Approved by Admin 02/09/11
<a href="#">9-11</a> : "Proposal to Change Degree Title "	01/03/11	Curricular Policy 01/03/11	01/19/11	Adopted by Senate 02/02/11	Approved by Admin 02/09/11
<a href="#">10-11</a> : "Proposal to Change Degree Title "	01/03/11	Curricular Policy 01/03/11	01/19/11	Adopted by Senate 02/02/11	Approved by Admin 02/09/11
<a href="#">11-11</a> : "Electrical Engineering Technology - Minor in Data Acquisition and Industrial Control "	12/15/10	Curricular Policy 12/15/10	01/19/11	Adopted by Senate 02/02/11	Approved by Admin 02/09/11
<a href="#">12-11</a> : "Modification to Sick Leave Policy in Faculty Handbook "	01/11/11	Fringe Benefits 01/11/11	01/19/11	Adopted by Senate 02/02/11	Approved by Admin 02/09/11
<a href="#">13-11</a> : "Proposal to Establish Guidelines for Accelerated Master's Programs at Michigan Tech "	10/22/10	Curricular Policy 10/22/10	02/02/11	Adopted by Senate 02/16/11	Approved by Admin 02/25/11
<a href="#">14-11</a> : "Proposal for an Undergraduate Certificate in Teaching English to Speakers of Other Languages "	10/29/10	Curricular Policy 10/29/10	02/16/11	Adopted by Senate 03/02/11	Approved by Admin 03/21/11
<a href="#">15-11</a> : "Concentrations/Options Within Degree Programs "	02/10/11	Curricular Policy 02/10/11	02/16/11	Adopted by Senate with amendments 03/02/11	Approved by Admin 03/22/11

16-11: "Proposal for an Interdisciplinary Graduate Certificate: The International Profile Certificate "	10/07/10	Curricular Policy 10/07/10 sent to Finance committee 12/15/10	02/16/11	Adopted by Senate with amendments 03/02/11	Approved by Admin 03/21/11
17-11: "Proposal for Shelving and Eliminating Degree Programs and Certificates "	02/21/11	Curricular Policy 02/21/11	03/02/11	Adopted by Senate 03/23/11	Approved by Admin 03/31/11
18-11: "Amendment to Proposal 21-01: Framework for Professional Master of Science Degrees: An Interdepartmental Professional Master of Science Degree with Specific Areas of Concentration "	02/02/11	Curricular Policy 02/02/11	03/02/11	Adopted by Senate 03/23/11	Approved by Admin 03/31/11
19-11: "Minor in Music Composition"	02/25/11	Curricular Policy 02/25/11	03/02/11	Adopted by Senate 03/23/11	Approved by Admin 03/31/11
20-11: "Academic Calendar 2012-2013 and Provisional Calendar 2013-2014 "	03/16/11	Instructional Policy 03/16/11	03/23/11	Adopted by Senate 04/06/11	
21-11: "Proposal to Eliminate Degree Program: BS in Pre-Med option Biology "	03/21/11	Curricular Policy 03/21/11	03-23-11	Adopted by Senate 04/06/11	
22-11: "Proposal to Eliminate Degree Program: BS in Pre-Dental option Biology "	03/21/11	Curricular Policy 03/21/11	03-23-11	Adopted by Senate 04/06/11	
23-11: "Proposal to Eliminate Degree Program: BS in Nursing"	03/21/11	Curricular Policy 03/21/11	03-23-11	Adopted by Senate 04/06/11	
24-11: "Proposal to Eliminate Degree Program: BS in Geophysical Engineering "	03/21/11	Curricular Policy 03/21/11	03-23-11	Adopted by Senate 04/06/11	
25-11: "Proposal to Eliminate Degree Program: BS in General Science "	03/21/11	Curricular Policy 03/21/11	03-23-11	Adopted by Senate 04/06/11	
26-11: "Proposal to Eliminate Degree Program: BS in Engineering Administration "	03/21/11	Curricular Policy 03/21/11	03-23-11	Adopted by Senate 04/06/11	
27-11: "Proposal to Eliminate Degree Program: Associates in Metals Technology "	03/21/11	Curricular Policy 03/21/11	03-23-11	Adopted by Senate 04/06/11	
28-11: "Proposal to Eliminate Degree Program: Associates in Chemical Engineering Technology "	03/21/11	Curricular Policy 03/21/11	03-23-11	Adopted by Senate 04/06/11	
29-11: "Proposal to Eliminate Degree Program: Associates in Applied Nursing "	03/21/11	Curricular Policy 03/21/11	03-23-11	Adopted by Senate 04/06/11	
30-11: "Proposal to Eliminate Degree Program: Certificate, Municipal Management "	03/21/11	Curricular Policy 03/21/11	03-23-11	Adopted by Senate 04/06/11	
31-11: "Proposal to Eliminate Degree Program: Certificate, International Technology and Society (Social Sciences) "	03/21/11	Curricular Policy 03/21/11	03-23-11	Adopted by Senate 04/06/11	
32-11: "Proposal to Eliminate Degree Program: Minor, Wood Science "	03/21/11	Curricular Policy 03/21/11	03-23-11	Adopted by Senate 04/06/11	
33-11: "Proposal to Eliminate Degree Program: Minor, Speech "	03/21/11	Curricular Policy 03/21/11	03-23-11	Adopted by Senate 04/06/11	
34-11: "Proposal to Shelve Degree Program: BS Health and Physical Education-Secondary Education Concentration"	03/21/11	Curricular Policy 03/21/11	03-23-11	Adopted by Senate 04/06/11	
35-11: "Proposal to Shelve Degree Program: BS Industrial Technology "	03/21/11	Curricular Policy 03/21/11	03-23-11	Adopted by Senate 04/06/11	
36-11: "Proposal to Shelve Degree Program: Certificate Mine Environmental Engineering "	03/21/11	Curricular Policy 03/21/11	03-23-11	Adopted by Senate 04/06/11	
37-11: "Proposal to Shelve Degree Program: Certificate Design Engineering "	03/21/11	Curricular Policy 03/21/11	03-23-11	Adopted by Senate 04/06/11	
38-11: "Conflict of Interest Policy Changes "	03/22/11	Research Policy	03-23-11	Adopted by Senate 04/06/11	

39-11: "Proposal for a Master of Science in Geospatial Technology "	12/15/10	Curricular Policy 12/15/10	04-06-11		
40-11: "Departmental Name Change from Department of Exercise Science, Health and Physical Education to Department of Kinesiology and Integrative Physiology"	04/05/11	Curricular Policy 04/05/11	04-06-11		
41-11: "Proposal to Shelf Degree Program: B.S. in Health & Physical Education-Secondary Education Concentration "	04/05/11	Curricular Policy 04/05/11	04-06-11	Withdraw- same proposal as 34-11	
42-11: "Proposal to Eliminate Degree Program: M.S. in General Engineering "	04/05/11	Curricular Policy 04/05/11	04-06-11		
43-11: "Proposal to Eliminate Degree Program: M.S. in Engineering Physics "	04/05/11	Curricular Policy 04/05/11	04-06-11		
44-11: "Proposal to Eliminate Degree Program: Ph.D. in Engineering Mechanics "	04/05/11	Curricular Policy 04/05/11	04-06-11		
45-11: "Proposal to Eliminate Degree Program: M.S. in Business Administration"	04/05/11	Curricular Policy 04/05/11	04-06-11		
46-11: "Proposal to Eliminate Degree Program: Ph.D. in Applied Physics "	04/05/11	Curricular Policy 04/05/11	04-06-11		
47-11: "Degree Name Change from B.S. in Health & Physical Education-Fitness & Sports Management Concentration to B.S. in Sports and Fitness Management "	04/06/11	Curricular Policy 04/06/11	04-06-11		
a-11: "Amendment to Proposal 11-92: Certificate in International Business Only Available to SBE B.S. in Business Administration Majors "	10/05/10	Curricular Policy 10/05/10	withdrawn by SBE		
b-11: "Transatlantic Dual Masters Degree Program in Forest Resources "	10/07/10	Curricular Policy 10/07/10	not needed	Approved by Curricular Policy Committee 12/09/10	
c-11: "Dual MS in Geology with France "	10/07/10	Curricular Policy 10/07/10	not needed	Approved by Curricular Policy Committee 12/09/10	
d-11: "Dual MS in Geology with Italy "	10/07/10	Curricular Policy 10/07/10	not needed	Approved by Curricular Policy Committee 12/09/10	
m-11: "Graduate Certificate in Integrated Geospatial Technology "	12/15/10	Curricular Policy 12/15/10			