

Evaluation of the President

2007/08 Academic Year
Per Senate Prop. 42-04

Presentation to University Senate
April 16, 2008



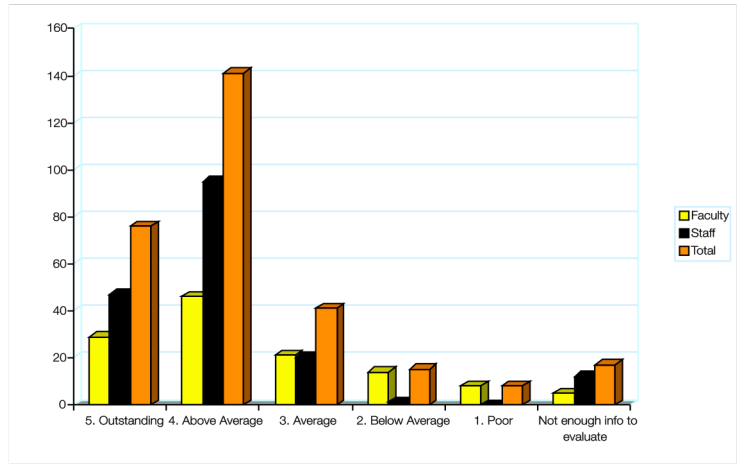
Summary of Responses

Faculty	Staff	Unknown	Total
124	175	1	300
41.3%	58.3%	0.3%	

Total Faculty	405	Faculty Response	30.6%
Total Staff	550	Staff Response	31.8%

MichiganTech
Create the Future

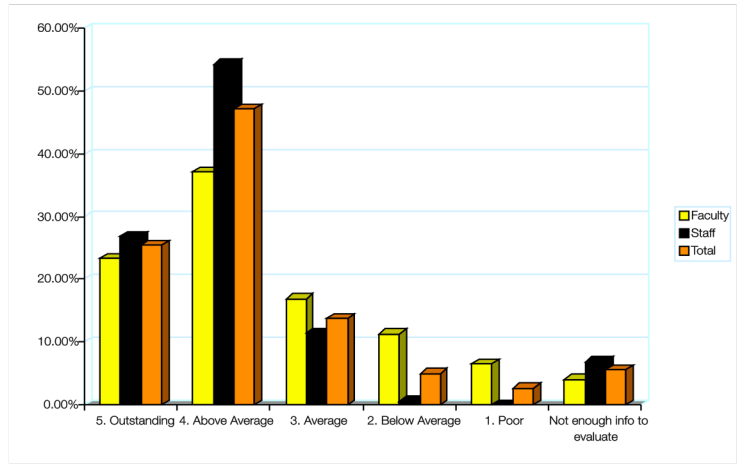
Q1: How would you rate the President's performance over the last year?



MichiganTech
Create the Future

Faculty mean - 3.63 staff mean - 4.15 total 3.93

Q1: How would you rate the President's performance over the last year?



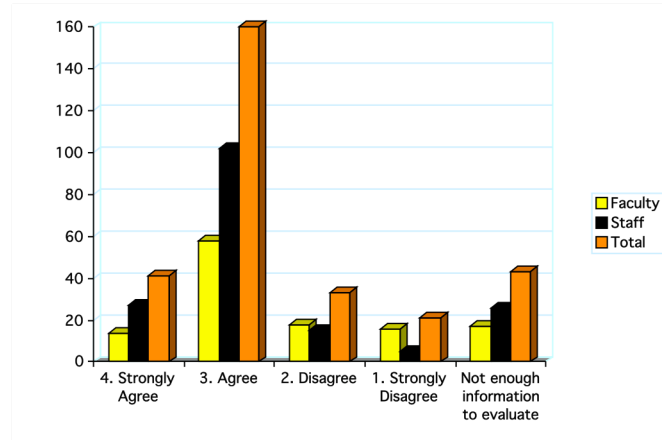
MichiganTech
Create the Future

Faculty mean - 3.63 staff mean - 4.15 total 3.93

Themes from the comments

- Communication
- Compensation
- SFHI
- Relations with faculty/AAUP
- Over 100 comments per question

Q5: The President maintains an effective senior administrative team.



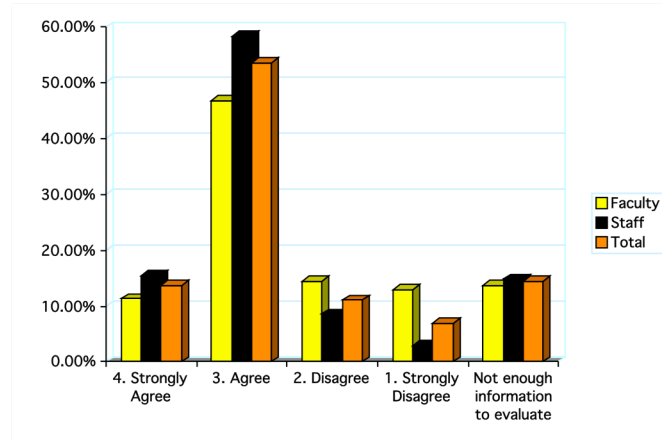
MichiganTech
Create the Future

This Year: Total Mean: 2.87 – Faculty Mean 2.66 – Staff Mean – 3.01; more positive than last year's response

Last year: Total Mean: 2.48 – Faculty Mean 2.27 – Staff Mean 2.71 Lowest Mean Value

Hiring of provost seems to be a factor.

Q5: The President maintains an effective senior administrative team.



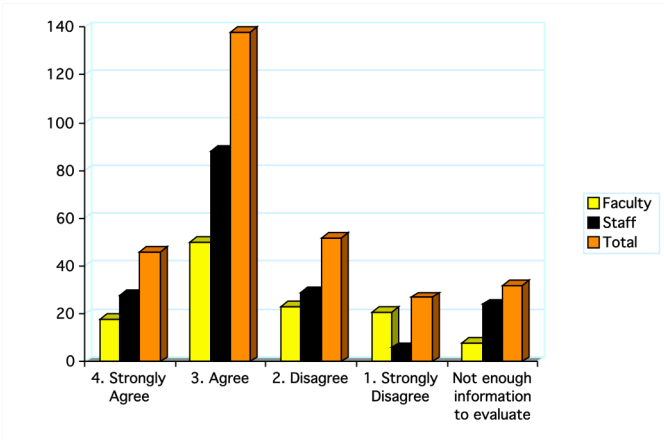
MichiganTech
Create the Future

This Year: Total Mean: 2.87 – Faculty Mean 2.66 – Staff Mean – 3.01; more positive than last year’s response

Last year: Total Mean: 2.48 – Faculty Mean 2.27 – Staff Mean 2.71 Lowest Mean Value

Hiring of provost seems to be a factor.

Q6: The President provides effective leadership in addressing compensation issues, working conditions, and career opportunities for faculty and staff.

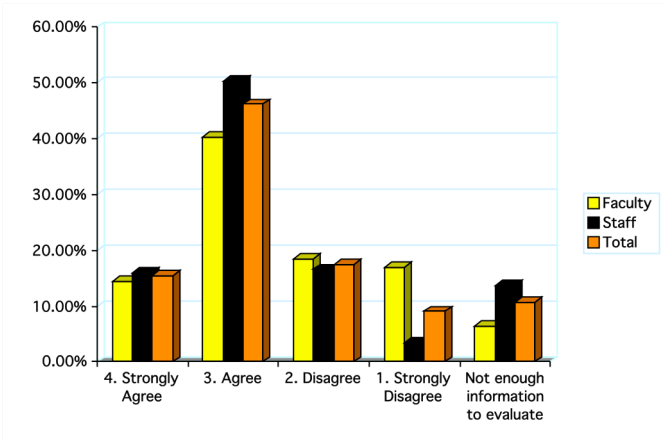


MichiganTech
Create the Future

This year: Total Mean: 2.77 - Faculty Mean 2.58 - Staff Mean 2.9

Last year: Total Mean: 2.76 - Faculty Mean 2.65 – Staff Mean 2.87

Q6: The President provides effective leadership in addressing compensation issues, working conditions, and career opportunities for faculty and staff.

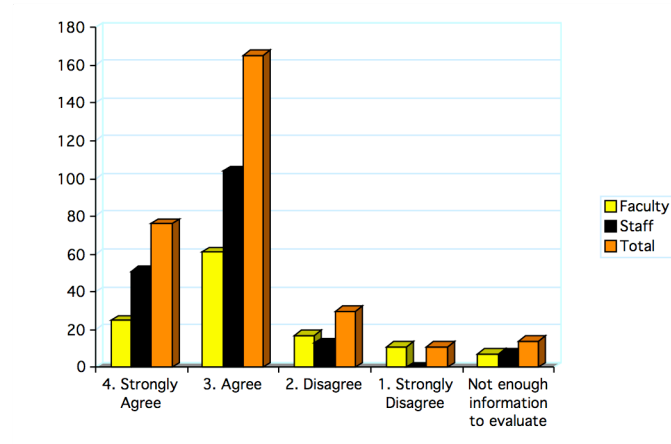


MichiganTech
Create the Future

This year: Total Mean: 2.77 - Faculty Mean 2.58 - Staff Mean 2.9

Last year: Total Mean: 2.76 - Faculty Mean 2.65 – Staff Mean 2.87

Q7: The President clearly communicates University priorities and policies.

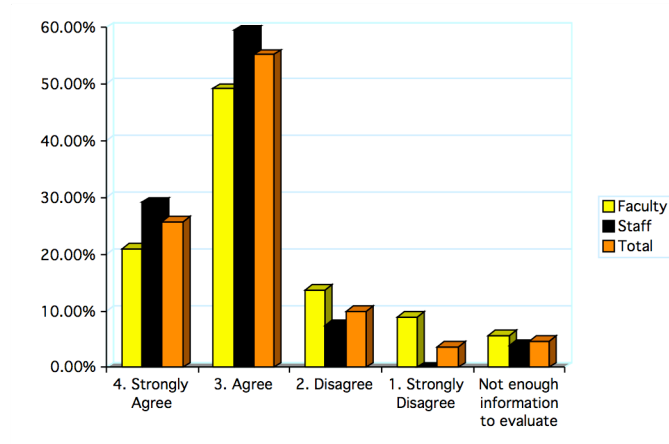


MichiganTech
Create the Future

This year: Total mean: 3.09 - Faculty Mean 2.89 - Staff Mean 3.23

Last year: Total Mean 2.92 – Faculty Mean 2.84 – Staff Mean 3.00

Q7: The President clearly communicates University priorities and policies.

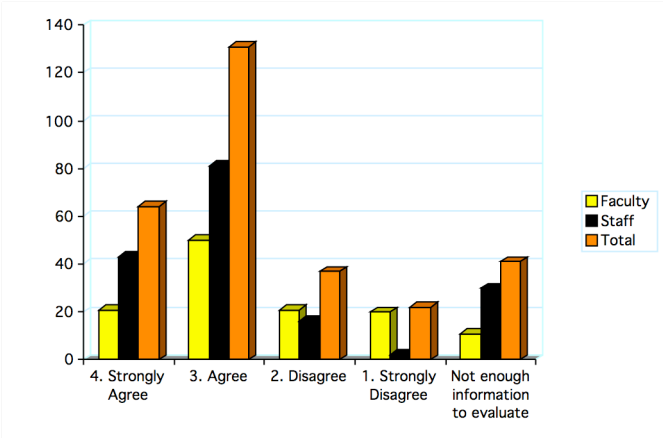


MichiganTech
Create the Future

This year: Total mean: 3.09 - Faculty Mean 2.89 - Staff Mean 3.23

Last year: Total Mean 2.92 – Faculty Mean 2.84 – Staff Mean 3.00

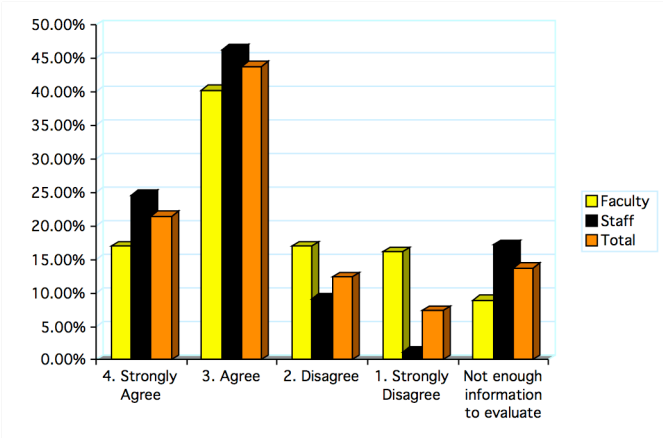
Q8: The President invites and incorporates input on university priorities and policies from faculty, staff and students.



This Year: Total Mean 2.93 - Faculty Mean 2.64 - Staff Mean 3.16

Last year: Total Mean 2.71 – Faculty Mean 2.56 – Staff Mean 2.87

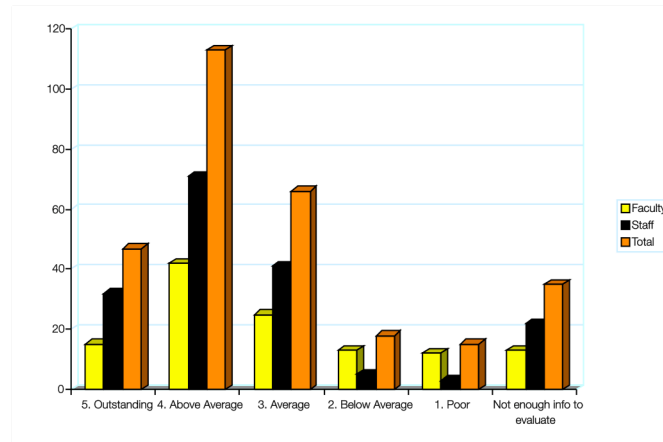
Q8: The President invites and incorporates input on university priorities and policies from faculty, staff and students.



This Year: Total Mean 2.93 - Faculty Mean 2.64 - Staff Mean 3.16

Last year: Total Mean 2.71 – Faculty Mean 2.56 – Staff Mean 2.87

Q9. Rate the President's leadership in addressing diversity issues on campus.

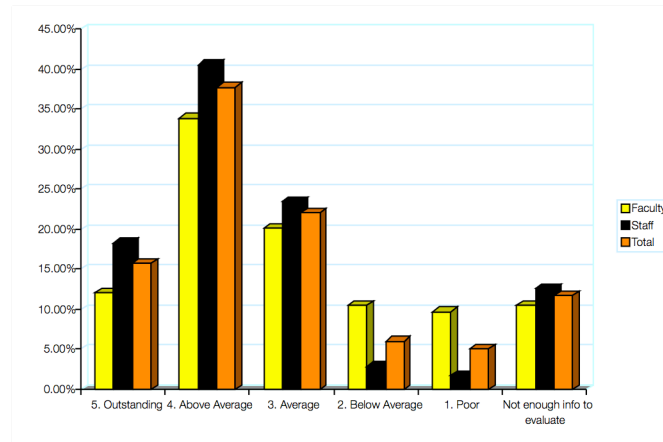


MichiganTech
Create the Future

This Year (different scale/question): Total Mean - 3.61 - Faculty Mean - 3.33 - Staff Mean 3.82

Last Year: Total Mean 2.62 – Faculty Mean 2.52 – Staff Mean 2.71 Fewest number of ‘Strongly Agree’s

Q9. Rate the President's leadership in addressing diversity issues on campus.

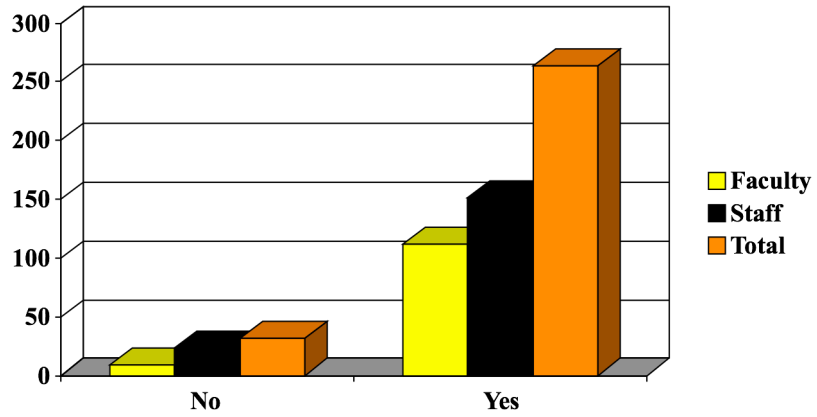


MichiganTech
Create the Future

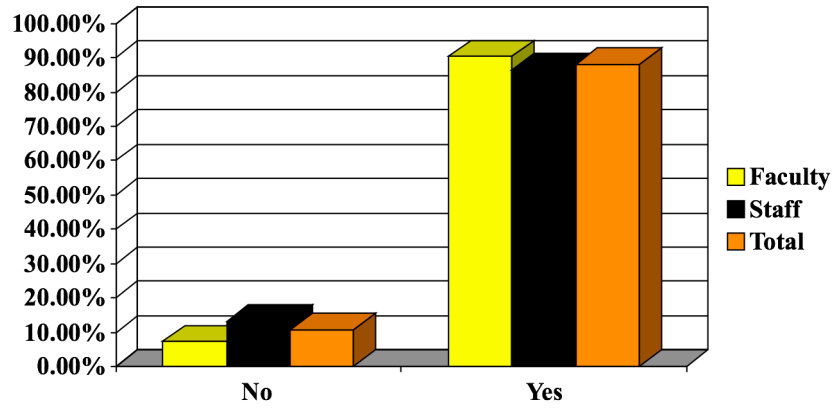
This Year (different scale/question): Total Mean - 3.61 - Faculty Mean - 3.33 - Staff Mean 3.82

Last Year: Total Mean 2.62 – Faculty Mean 2.52 – Staff Mean 2.71 Fewest number of ‘Strongly Agree’s

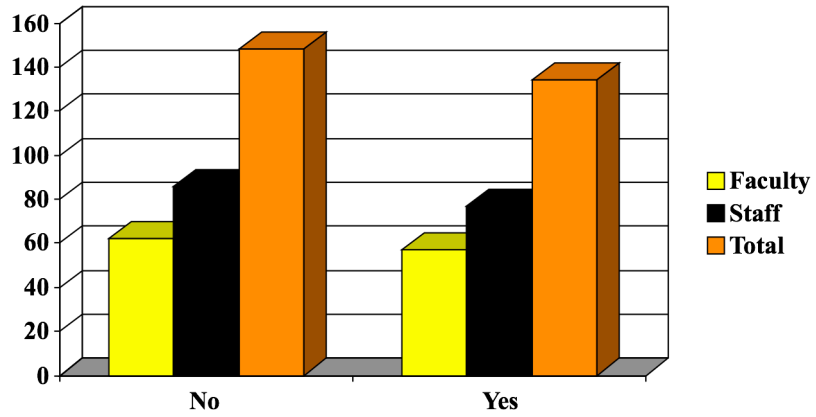
Q10: Have you read the University's strategic plan?



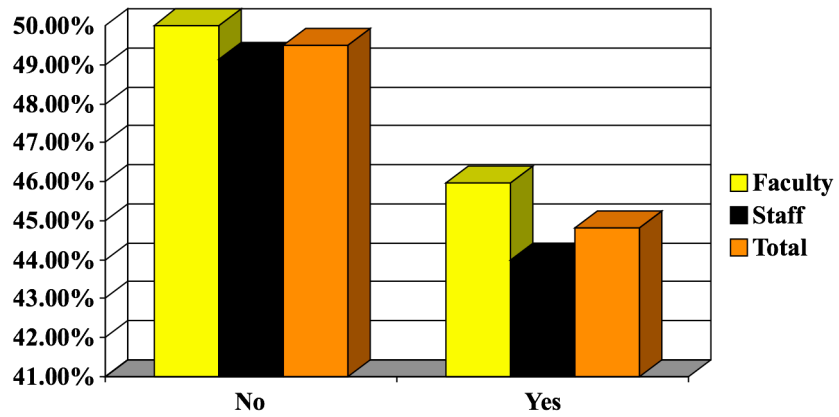
Q10: Have you read the University's strategic plan?



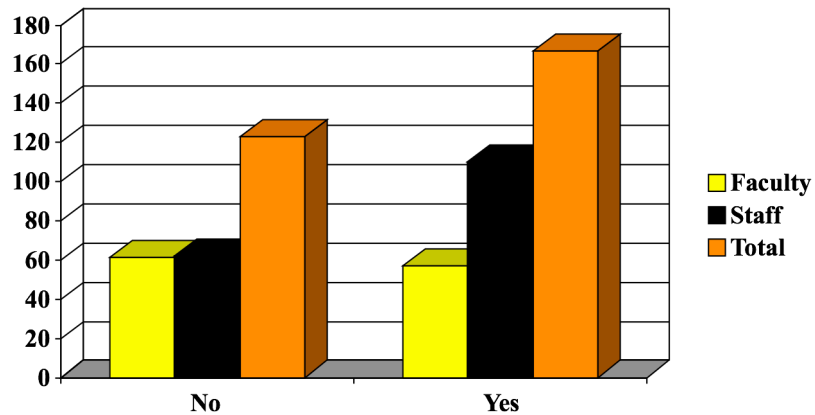
Q11: Do you feel that you had input into the University's strategic plan?



Q11: Do you feel that you had input into the University's strategic plan?



Q12: Does the University's strategic plan influence or guide your daily work decisions?

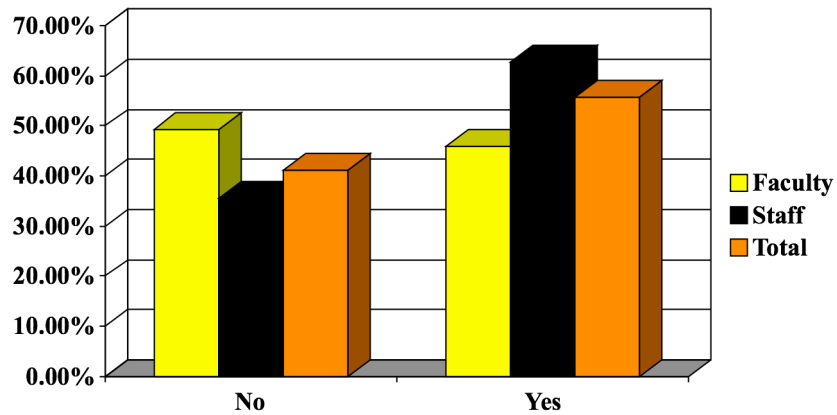


MichiganTech
Create the Future

The same number of faculty that said they didn't have input also said that the plan does not guide their daily decisions

More staff said 'yes'.

Q12: Does the University's strategic plan influence or guide your daily work decisions?



MichiganTech
Create the Future

The same number of faculty that said they didn't have input also said that the plan does not guide their daily decisions

More staff said 'yes'.

Q14. Do you have any comments on the survey format, or suggestions for additional questions that this survey should include?

- 2 suggested question areas; 2 suggested improvements
- Comments generally positive
- A few concerns about confidentiality expressed

Acknowledgements

- Administrative Policy Committee
 - George Dewey
 - Jennifer Donovan
 - Pat Gotschalk
 - Brenda Helminen, Chair
 - Jim Turnquist
- Senate Office
 - Judi Smigowski

