

Sponsored Program Summary FY14

October 3, 2014

Dave Reed

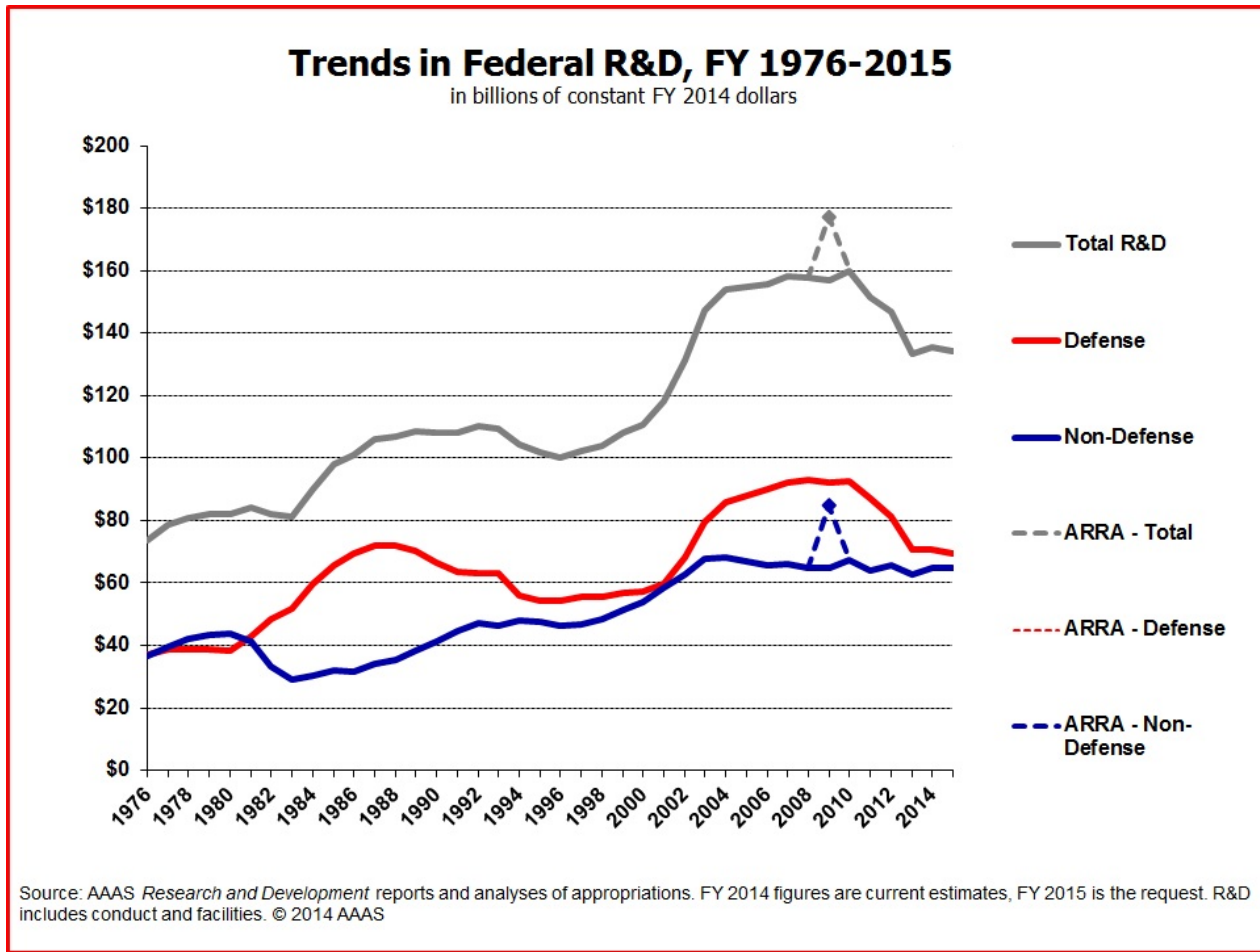
Vice President for Research

Michigan Tech

Outline

- Sponsored Awards, FY14
- Research Expenditures, FY14
- Intellectual Property/Commercialization, FY14
- Corporate Sponsorship, FY14
- Great Lakes Research Center Update

Federal Research Funding, FY1976 – FY2015



FY14 Sponsored Program Awards



Sponsored Awards, FY14

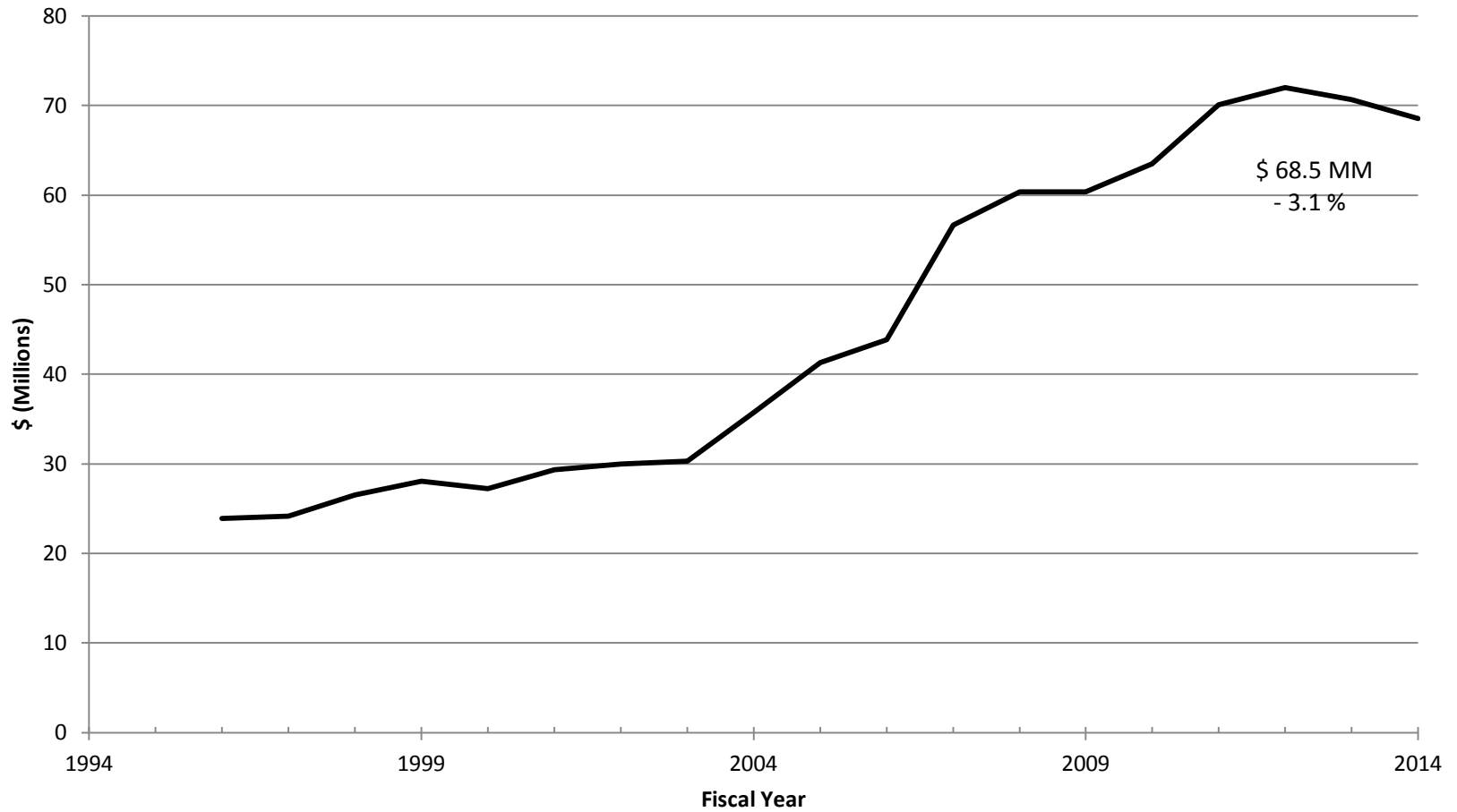
Sponsor Category	FY14	FY13	% +/-
Federal	\$ 31,945,957	\$ 35,144,558	- 9 %
Other Sponsored	\$ 12,900,248	\$ 7,846,484	+ 64 %
Gifts	\$ 3,324,927	\$ 4,993,501	- 33 %
TOTAL	\$ 48,162,964	\$ 48,016,845	+ 0 %

Michigan Tech

Sponsored Awards, FY14

- Federal funding percentage has declined to 66% of awarded funds in FY14 as compared to 73% in FY13 and FY12, and 83% in FY11 and FY10.
- During FY14, 67 % of the tenured and tenure track faculty were Principal Investigator or co-PI on a submitted proposal.

Research Expenditures, FY14



Research Expenditures, FY14

- Preliminary research expenditures declined by 3.1% from FY13, to a total of \$ 68,525,862.
- This seems to indicate a lagged response to the declines in Sponsored Awards in previous years after ARRA and reflects the national decrease of about 12% in federal research spending. It also includes some reductions in Internal Expenditures due to reclassifications.

Research Expenditures, FY14

- On June 30, 2014, 56% of the tenured and tenure track faculty were Principal Investigator or co-PI on an active project.

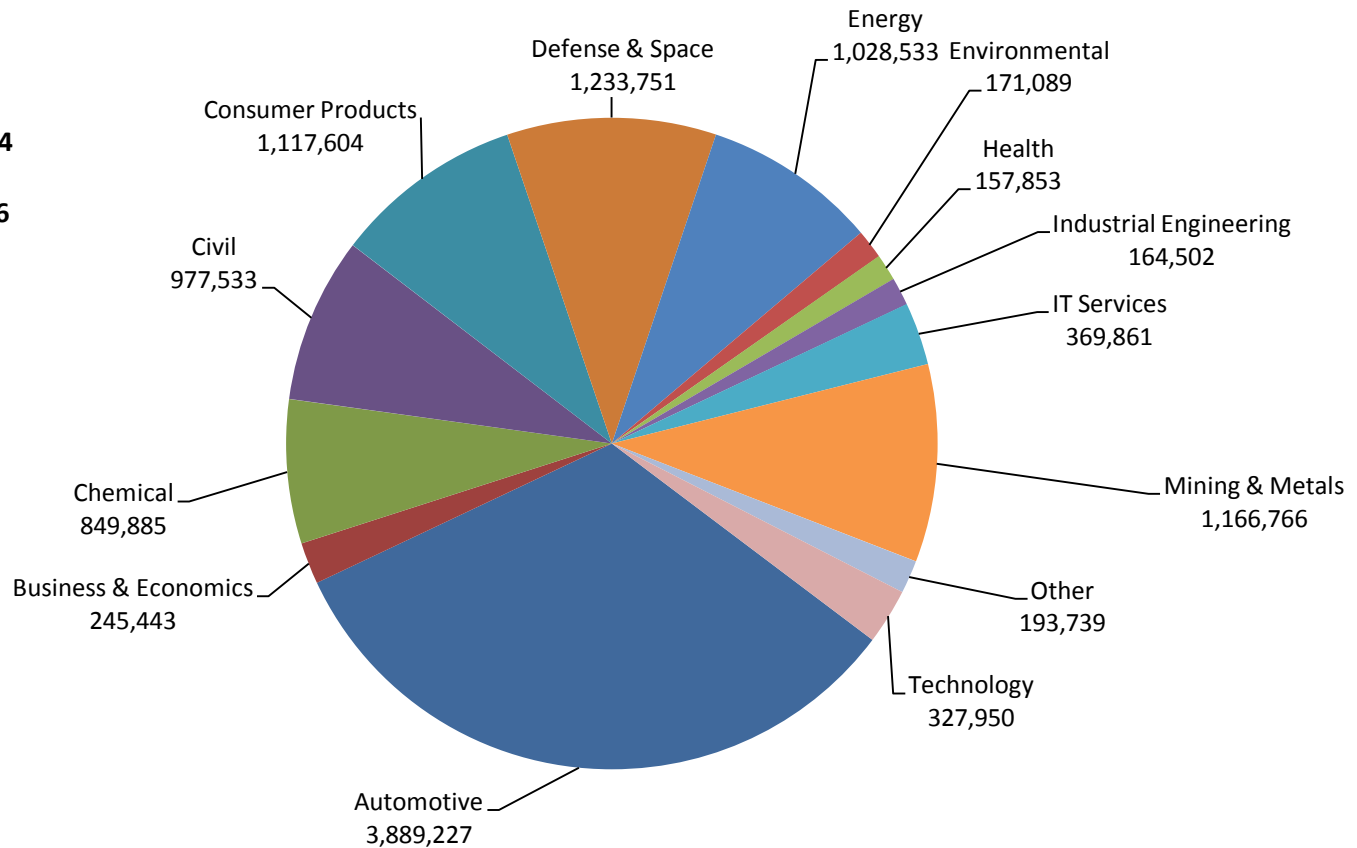
Intellectual Property, FY14

	FY14	FY13	% +/-
Disclosures	45	51	- 12 %
NDA's	96	111	- 14 %
Patents Issued/Filed	23	27	- 15 %
License Agreements	15	26	- 42 %
Royalty/Option	\$ 262,424	\$ 193,985	+35 %

Michigan Tech

Corporate Sponsorship FY14

Sponsored Awards
-Industry-
COMBINED*
Fiscal Year 2014
4th Quarter
Ended June 30, 2014
TOTAL: \$11,893,736



Michigan Tech

Great Lakes Research Center Update



Michigan Tech

GLRC Update

- GLRC Building opened April, 2012
- Strategic Faculty Hiring Initiative
- GLRC formally recognized as a Michigan Tech Research Institute in early 2013
- Existing Center for Water and Society [CWS] affiliated with GLRC in 2013

GLRC Update

- In FY12, when the GLRC building was opened, CWS had \$567,777 in sponsored awards.
- In FY13, GLRC had \$1,200,618 in sponsored awards, including \$491,772 from CWS.
- In FY14, GLRC had \$3,602,909 in sponsored awards, including \$1,759,994 from CWS.

GLRC Update

- At the end of FY14, GLRC and CWS had 30 active projects, with principal investigators from 6 different Michigan Tech units and co-investigators from 10 different Michigan Tech units.
- There were direct active projects from four federal agencies: NASA, NSF, Defense, and EPA
- There were collaborative projects with University of Michigan, MIT, Penn State, Univ. New Hampshire, Ohio State, and Univ. Maryland.
- In addition three companies and several local agencies were sponsoring projects

GLRC Update



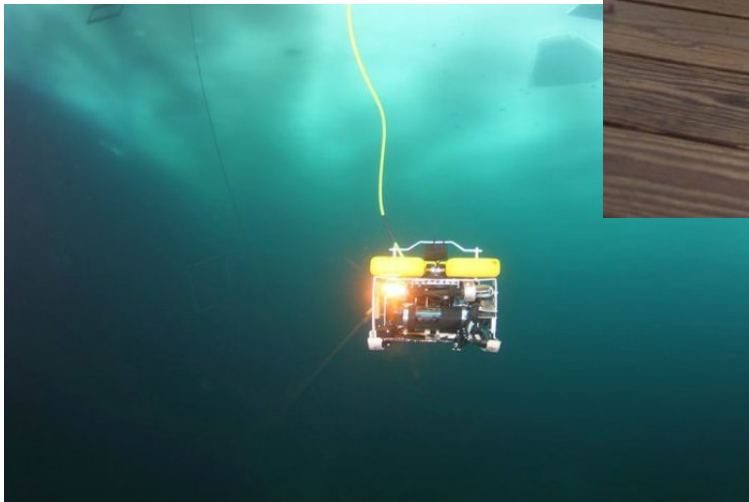
Michigan Tech

GLRC Update



Michigan Tech

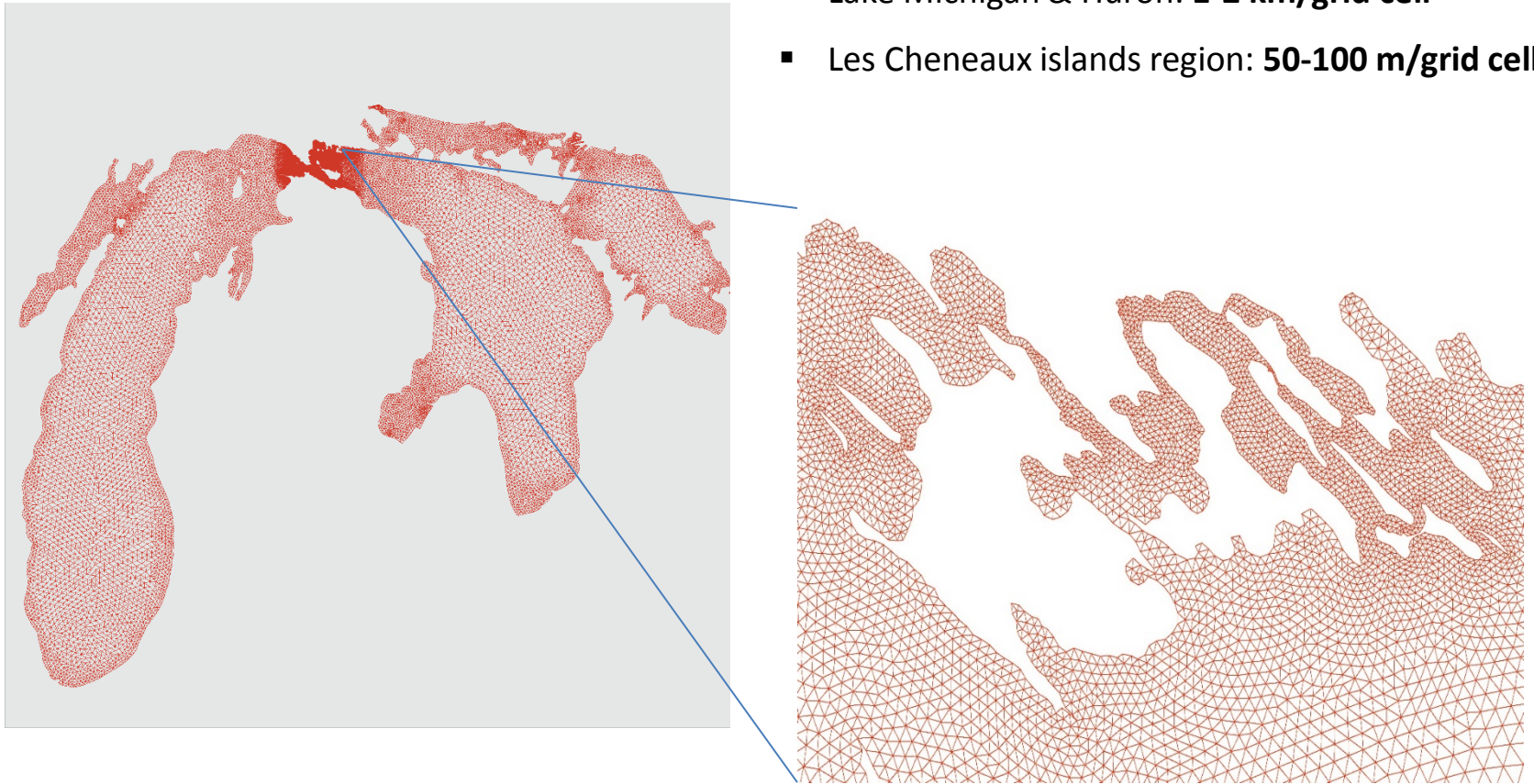
GLRC Update



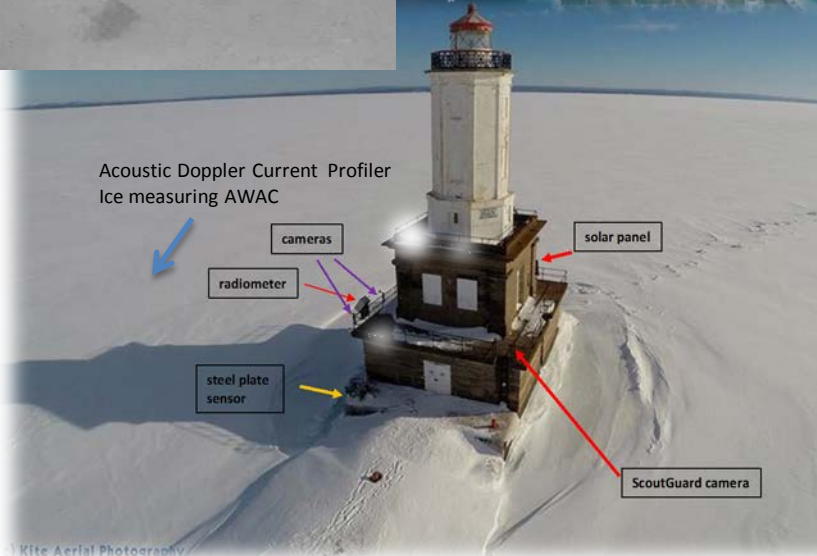
Michigan Tech

GLRC Update

- Lake Michigan & Huron: **1-2 km/grid cell**
- Les Cheneaux islands region: **50-100 m/grid cell**

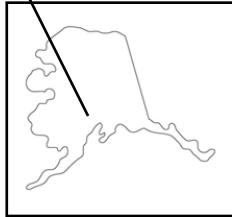


GLRC Update



Alliance for Coastal Technologies Partner Institutions

Arctic



Great Lakes



University of Michigan
Cooperative Institute for
Limnology & Ecosystems Research



Pacific

Moss Landing
Marine Laboratories

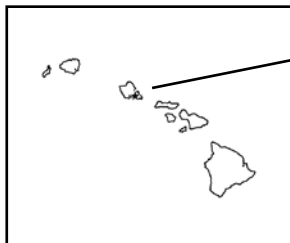


Atlantic



University of Maryland
CENTER FOR ENVIRONMENTAL SCIENCE
Chesapeake Biological Laboratory

Tropical



Gulf



GLRC Update

- Michigan Tech GLRC is now the 'cold seas' testing university in the Alliance for Coastal Technologies.
- **“ACT partners include academic research institutions with coastal and ocean science and technology expertise, and that represent a broad range of environmental conditions for instrument testing. The Partner institutions help identify technologies to be evaluated and themes for workshops, and carry out these activities regionally. They are also responsible for conducting regional outreach activities and serve as information conduits to the broader community.”**
- 2014 – Under ice dissolved oxygen sensor testing with 10 manufacturers.

GLRC Update



Michigan Tech