

# KIP COVID-19 Brief

March 14-18, 2022

## CASE TRENDS

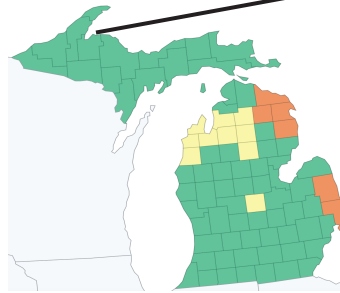
### Michigan State Synopsis

7 day average as of 03/11/22

	LAST WEEK	CHANGE FROM PREVIOUS WEEK
RATE OF NEW COVID-19 CASES PER 100,000	61	-48%
NUCLEIC ACID AMPLIFICATION TEST (NAAT) POSITIVITY RATE	3.5%	-1.5%
NEW CONFIRMED COVID-19 HOSPITAL ADMISSIONS / 100 BEDS	3.4	-16%
RATE OF NEW COVID-19 DEATHS PER 100,000	3.6	-2%
PEOPLE RECEIVED AT LEAST 1 DOSE	6,632,121 people	66.4% of total pop.
PEOPLE 5-11 RECEIVED AT LEAST 1 DOSE	233,106 people	28.2% of 5-11 pop.
PEOPLE 12+ RECEIVED AT LEAST 1 DOSE	6,398,451 people	74.4% of 12+ pop.
PEOPLE FULLY VACCINATED	5,944,234 people	59.5% of total pop.
PEOPLE 12+ FULLY VACCINATED	5,741,718 people	66.8% of 12+ pop.
PEOPLE 65+ RECEIVED BOOSTER	1,161,678 people	75.4% of fully vaccinated 65+ pop.

healthdata.gov

### Houghton County



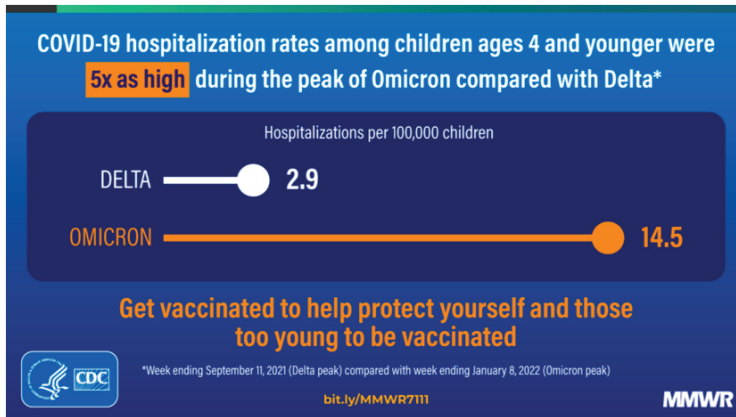
COVID-19 Community Levels – Use the Highest Level that Applies to Your Community

New COVID-19 Cases Per 100,000 people in the past 7 days	Indicators	Low	Medium	High
Fewer than 200	New COVID-19 admissions per 100,000 population (7-day total)	<10.0	10.0-19.9	≥20.0
	Percent of staffed inpatient beds occupied by COVID-19 patients (7-day average)	<10.0%	10.0-14.9%	≥15.0%
200 or more	New COVID-19 admissions per 100,000 population (7-day total)	NA	<10.0	≥10.0
	Percent of staffed inpatient beds occupied by COVID-19 patients (7-day average)	NA	<10.0%	≥10.0%

coronavirus.jhu.edu

## RESEARCH STUDY OF THE WEEK

Hospitalization of Infants and Children Aged 0-4 Years with Laboratory - Confirmed COVID-19 - COVID-NET, 14 States, March 2020 - February 2022



## PHYSICAL ACTIVITY BENEFIT OF THE WEEK

### Outdoor Springtime Activities

Start an outdoor garden



Go on a walk in the warmer weather



## HOW TO FIND INFORMATION



Michigan Technological University

# COVID-19 IMPACT & RESPONSE

U.P. VIRTUAL TOWN HALL SERIES

PRESENTED BY UP HEALTH SYSTEM PORTAGE

Thursday, March 31st, 2022 @ 7:00 PM EST  
Global COVID-19 Perspectives

## USEFUL RESOURCES



To stay up-to-date on Michigan Tech's response, visit:  
[mtu.edu/flex/](https://mtu.edu/flex/)

**COVID Testing Hours and Location**  
When: Monday - Thursday: 9AM - 1 PM  
Where: Rozsa Center basement  
Results are typically available within 24-48 hours!

**Free KN95 Masks**  
Contact Student Disability Services at [sds@mtu.edu](mailto:sds@mtu.edu)  
Employees: Contact ADA Coordinator at [adaordinator@mtu.edu](mailto:adaordinator@mtu.edu)